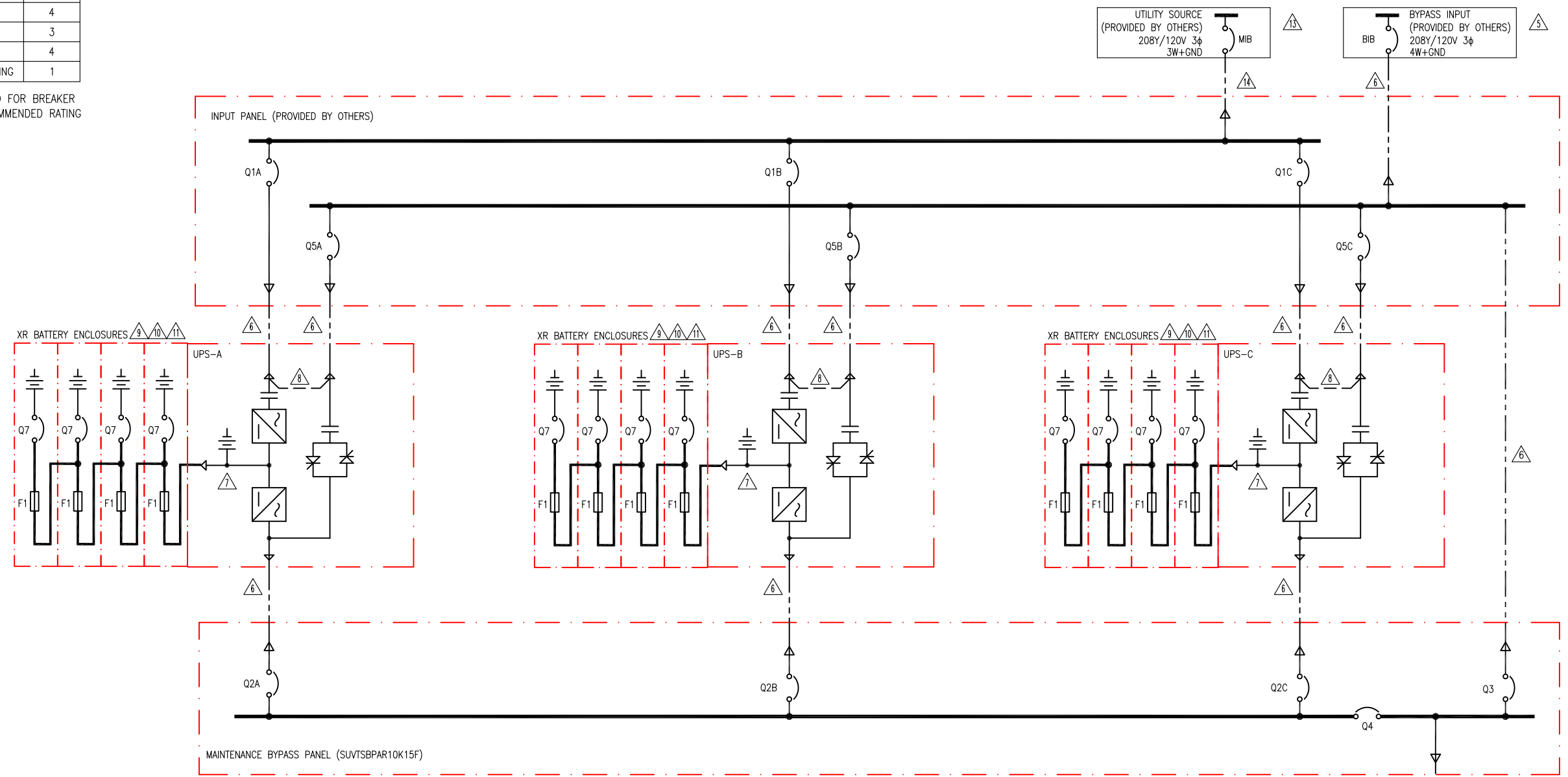


OVERCURRENT PROTECTION DEVICE TABLE

DEVICE	FUNCTION	LOCATION	CURRENT	RATING*	TYPE	POLES
MIB†	SYS SOURCE	—	120.5A	175AT†	MCCB	3
BIB†	BYP SOURCE	—	124.9	175AT†	MCCB	3
Q1	UPS AC IN	INPUT PANEL	40.2A	60AF†	MCCB	3
Q2	UPS AC OUT	BYPASS PANEL	41.6A	60AF	MCCB	4
Q3, Q4	SYS OUT	BYPASS PANEL	124.9A	175AF	MCCB	4
Q5	UPS INT SSW	INPUT PANEL	41.6A	60AF	MCCB	3
Q7	DC DISCONNECT	DC DISCONNECT	33.3A	250AF†	MCCB	4
F1	BATTERY FUSE	DC DISCONNECT	33.3A	125A	FAST ACTING	1

* 80% CONTINUOUS DUTY RATED FOR BREAKER
 † (PROVIDED BY OTHERS) RECOMMENDED RATING



UPS SYSTEM OUTPUT
 45kVA, 208Y/120V, 3φ
 4W+GND

NOTES:

- INSTALLATION SHALL COMPLY WITH ALL APPLICABLE NATIONAL, STATE AND LOCAL CODES.
- PLEASE REFER TO PRODUCT DOCUMENTATION FOR ADDITIONAL DETAILS.
- DRAWING DEPICTS POWER SYSTEM CONNECTIONS AND IS NOT REPRESENTATIVE OF PHYSICAL LAYOUT, PLEASE REFER TO MECHANICAL DRAWINGS FOR PHYSICAL LAYOUT.
- ALL BREAKERS ARE 80% CONTINUOUS DUTY RATED.
- AC SOURCE TO BE 208VAC, 4 WIRE, WYE CONNECTED, 3φ (CONTACT SCHNEIDER ELECTRIC IF OTHER)
- AC CABLING TO BE 600V RATED, 4 WIRE + GROUND, AND SHALL BE RUN IN SEPARATE CONDUITS.
- DC SOURCE TO BE 384VDC WITH CENTER TAP, 3 WIRE + GROUND.
- SINGLE MAINS INSTALLATION IS A DEFAULT. BRIDGE BUS BARS SHALL BE REMOVED FOR DUAL MAINS INSTALLATIONS.
- XR BATTERY ENCLOSURE IS AVAILABLE WITHOUT BREAKER WITH DC FUSE ONLY
- UP TO FOUR XR BATTERY ENCLOSURES MAY BE CONNECTED TO THE UPS TO EXTEND BACKUP TIME.
- EXTERNAL BATTERY CABINET IS OPTIONAL. BAYING KITS HAVE TO BE PURCHASED AS AN OPTION. BATTERY SIZING IS BASED ON A MAXIMUM 1 VOLT DROP PER HALF-STRING AT NOMINAL RATED DC CURRENT. CE SHALL ADJUST CABLE SIZE BASED ON INSTALLATION PARAMETERS.
- CABLE LUGS ARE PROVIDED BY OTHERS.
- AC SOURCE SHALL BE 208VAC, 3 WIRE, WYE CONNECTED, 3φ (CONTACT SCHNEIDER ELECTRIC IF OTHER).
- AC CABLING SHALL BE 600V RATED, 3 WIRE + GROUND, AND SHALL BE RUN IN SEPARATE CONDUITS.

THIS DRAWING IS APPLICABLE TO THE FOLLOWING SKUs

15kVA UPS SKUs	SUVT15KF2B2
	SUVT15KF2B4
	SUVT15KF3B4
	SUVT15KF4B4
XR BATTER SKUs	SUVTBX2B6
	SUVTBX6B6
	SUVTXR2B6
	SUVTXR6B6
BYPASS PANEL	SUVTSPAR10K15F

LINETYPE LEGEND:

---	MECHANICAL ENCLOSURES
---	AC CABLE - PROVIDED BY OTHERS
---	AC BUS (MBP)
---	BUS CONNECTIONS FOR BREAKERS
---	DC BUS

DUAL MAINS, W/BAYED XR BATTERY CABINETS

THIS DRAWING AND SPECIFICATIONS HEREIN ARE THE PROPERTY OF SCHNEIDER ELECTRIC AND SHALL NOT BE COPIED, REPRODUCED OR USED IN WHOLE OR IN PART, AS THE BASIS FOR THE MANUFACTURE OR SALE OF ITEMS WITHOUT WRITTEN PERMISSION FROM SCHNEIDER ELECTRIC. THIS DRAWING IS BASED UPON LATEST AVAILABLE INFORMATION AND IS SUBJECT TO CHANGE WITHOUT NOTICE.



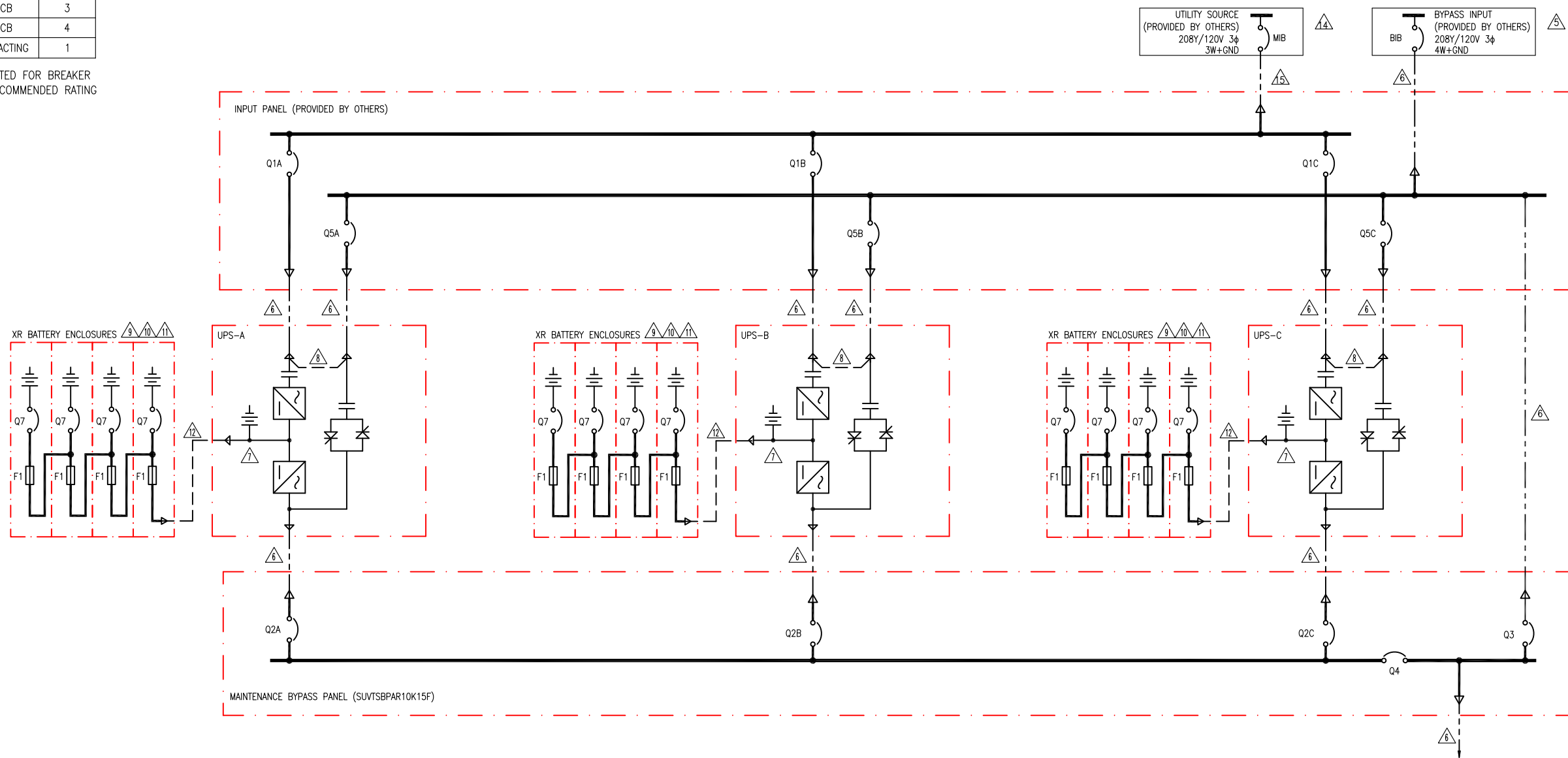
TITLE: SMART-UPS VT, PARALLEL SYSTEM
 INPUT: 208VAC, 3φ, DUAL MAINS
 OUTPUT: 208VAC, 45kVA
 BAYED XR BATTERY ENCLOSURES
 SYSTEM ONE LINE DIAGRAM
 PROJECT: SUBMITTAL DRAWINGS | SHEET 1 OF 2

DWG NO:	SUVT15KF2C3-SD	REV:	5
DRAWN BY:	C KRISHNA/BALA	DATE:	24-AUG-16
ENGINEER:	M MAISSY	DATE:	24-AUG-16
APPROVED:	M MAISSY	DATE:	24-AUG-16
PROJECT:	SUBMITTAL DRAWINGS	SHEET:	1 OF 2
PROJ ANGLE:	N.A.		

OVERCURRENT PROTECTION DEVICE TABLE

DEVICE	FUNCTION	LOCATION	CURRENT	RATING*	TYPE	POLES
MIB†	SYS SOURCE	—	120.5A	175AT†	MCCB	3
BIB†	BYP SOURCE	—	124.9	175AT†	MCCB	3
Q1	UPS AC IN	INPUT PANEL	40.2A	60AF†	MCCB	3
Q2	UPS AC OUT	BYPASS PANEL	41.6A	60AF	MCCB	4
Q3, Q4	SYS OUT	BYPASS PANEL	124.9A	175AF	MCCB	4
Q5	UPS INT SSW	INPUT PANEL	41.6A	60AF	MCCB	3
Q7	DC DISCONNECT	DC DISCONNECT	33.3A	250AF†	MCCB	4
F1	BATTERY FUSE	DC DISCONNECT	33.3A	125A	FAST ACTING	1

* 80% CONTINUOUS DUTY RATED FOR BREAKER
 † (PROVIDED BY OTHERS) RECOMMENDED RATING



NOTES:

- INSTALLATION SHALL COMPLY WITH ALL APPLICABLE NATIONAL, STATE AND LOCAL CODES.
- PLEASE REFER TO PRODUCT DOCUMENTATION FOR ADDITIONAL DETAILS.
- DRAWING DEPICTS POWER SYSTEM CONNECTIONS AND IS NOT REPRESENTATIVE OF PHYSICAL LAYOUT, PLEASE REFER TO MECHANICAL DRAWINGS FOR PHYSICAL LAYOUT.
- ALL BREAKERS ARE 80% CONTINUOUS DUTY RATED.
- AC SOURCE TO BE 208VAC, 4 WIRE, WYE CONNECTED, 3φ (CONTACT SCHNEIDER ELECTRIC IF OTHER)
- AC CABLING TO BE 600V RATED, 4 WIRE + GROUND, AND SHALL BE RUN IN SEPARATE CONDUITS.
- DC SOURCE TO BE 384VDC WITH CENTER TAP, 3 WIRE + GROUND.
- SINGLE MAINS INSTALLATION IS A DEFAULT. BRIDGE BUS BARS SHALL BE REMOVED FOR DUAL MAINS INSTALLATIONS.
- XR BATTERY ENCLOSURE IS AVAILABLE WITHOUT BREAKER WITH DC FUSE ONLY
- UP TO FOUR XR BATTERY ENCLOSURES MAY BE CONNECTED TO THE UPS TO EXTEND BACKUP TIME.
- EXTERNAL BATTERY CABINET IS OPTIONAL. BAYING KITS HAVE TO BE PURCHASED AS AN OPTION. BATTERY SIZING IS BASED ON A MAXIMUM 1 VOLT DROP PER HALF-STRING AT NOMINAL RATED DC CURRENT. CE SHALL ADJUST CABLE SIZE BASED ON INSTALLATION PARAMETERS.
- DC CABLING TO BE 600V RATED, 3W+GND, SHALL BE RUN IN SEPARATE CABLING CONDUITS.
- CABLE LUGS ARE PROVIDED BY OTHERS.
- AC SOURCE SHALL BE 208VAC, 3 WIRE, WYE CONNECTED, 3φ (CONTACT SCHNEIDER ELECTRIC IF OTHER).
- AC CABLING SHALL BE 600V RATED, 3 WIRE + GROUND, AND SHALL BE RUN IN SEPARATE CONDUITS.

THIS DRAWING IS APPLICABLE TO THE FOLLOWING SKUs

15kVA UPS SKUs	SUVT15KF2B2
	SUVT15KF2B4
	SUVT15KF3B4
	SUVT15KF4B4
XR BATTER SKUs	SUVTBXR2B6
	SUVTBXR6B6
	SUVTXR2B6
	SUVTXR6B6
BYPASS PANEL	SUVTSBPAR10K15F

LINETYPE LEGEND:

---	MECHANICAL ENCLOSURES
- - - - -	AC CABLE - PROVIDED BY OTHERS
=====	AC BUS (MBP)
=====	BUS CONNECTIONS FOR BREAKERS
=====	DC BUS

DUAL MAINS, W/REMOTE XR BATTERY CABINETS

THIS DRAWING AND SPECIFICATIONS HEREIN ARE THE PROPERTY OF SCHNEIDER ELECTRIC AND SHALL NOT BE COPIED, REPRODUCED OR USED IN WHOLE OR IN PART, AS THE BASIS FOR THE MANUFACTURE OR SALE OF ITEMS WITHOUT WRITTEN PERMISSION FROM SCHNEIDER ELECTRIC. THIS DRAWING IS BASED UPON LATEST AVAILABLE INFORMATION AND IS SUBJECT TO CHANGE WITHOUT NOTICE.



TITLE: SMART-UPS VT, PARALLEL SYSTEM
 INPUT: 208VAC, 3φ, DUAL MAINS
 OUTPUT: 208VAC, 45kVA
 REMOTE XR BATTERY ENCLOSURES
 SYSTEM ONE LINE DIAGRAM
 PROJECT: SUBMITTAL DRAWINGS SHEET 2 OF 2

DWG NO:	SUVTP15KF2C3-SD	REV:	5
DRAWN BY:	C KRISHNA/BALA	DATE:	24-AUG-16
ENGINEER:	M MAISSY	DATE:	24-AUG-16
APPROVED:	M MAISSY	DATE:	24-AUG-16
		PROJ ANGLE:	N.A.