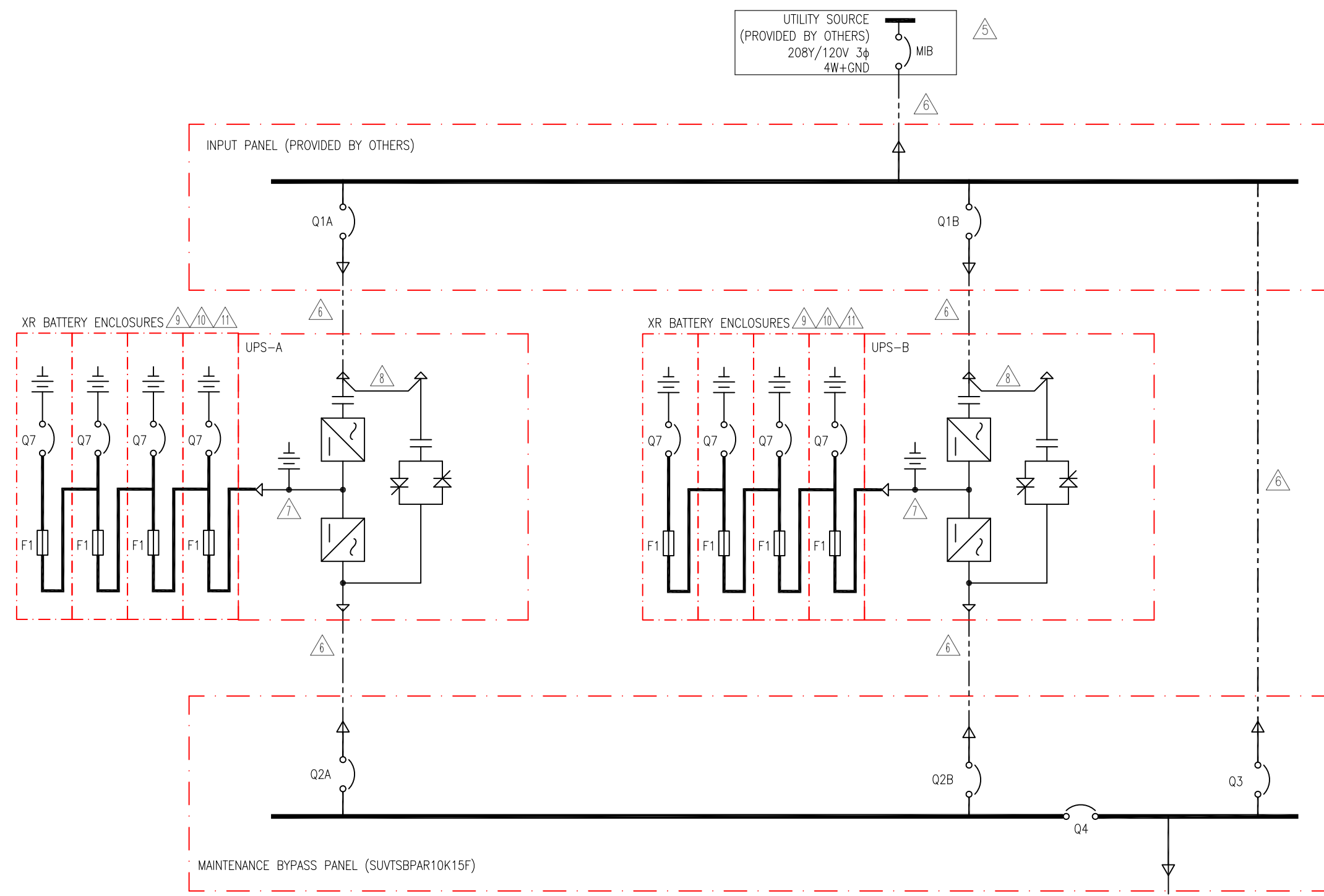


OVERCURRENT PROTECTION DEVICE TABLE						
DEVICE	FUNCTION	LOCATION	CURRENT	RATING*	TYPE	POLES
MIB†	SYS SOURCE	-	43.8A	60AT†	MCCB	3
Q1	UPS AC IN	INPUT PANEL	40.2A	60AF†	MCCB	3
Q2	UPS ANC OUT	BYPASS PANEL	41.6A	60AF	MCCB	4
Q3, Q4	SYS OUT	BYPASS PANEL	41.6A	175AF	MCCB	4
Q7	DC DISCONNECT	BATTERY CABINET	33.3A	250AF	MCCB	4
F1	BATTERY FUSE	BATTERY CABINET	33.3A	125A	FAST ACTING	1

\* 80% CONTINUOUS DUTY RATED FOR BREAKER  
† (PROVIDED BY OTHERS) RECOMMENDED RATING



**NOTES:**

- INSTALLATION SHALL COMPLY WITH ALL APPLICABLE NATIONAL, STATE AND LOCAL CODES.
- PLEASE REFER TO PRODUCT DOCUMENTATION FOR ADDITIONAL DETAILS.
- DRAWING DEPICTS POWER SYSTEM CONNECTIONS AND IS NOT REPRESENTATIVE OF PHYSICAL LAYOUT, PLEASE REFER TO MECHANICAL DRAWINGS FOR PHYSICAL LAYOUT.
- ALL BREAKERS ARE 80% CONTINUOUS DUTY RATED.
- △ 5. AC SOURCE TO BE 208VAC, 4 WIRE, WYE CONNECTED, 3φ (CONTACT SCHNEIDER ELECTRIC IF OTHER)
- △ 6. AC CABLING TO BE 600V RATED, 4 WIRE + GROUND, AND SHALL BE RUN IN SEPARATE CONDUITS.
- △ 7. DC SOURCE TO BE 384VDC WITH CENTER TAP, 3 WIRE + GROUND.
- △ 8. SINGLE MAINS INSTALLATION IS A DEFAULT. BRIDGE BUS BARS SHALL NOT BE REMOVED.
- △ 9. XR BATTERY ENCLOSURE IS AVAILABLE WITHOUT BREAKER WITH DC FUSE ONLY
- △ 10. UP TO FOUR XR BATTERY ENCLOSURES MAY BE CONNECTED TO THE UPS TO EXTEND BACKUP TIME.
- △ 11. EXTERNAL BATTERY CABINET IS OPTIONAL. BAYING KITS HAVE TO BE PURCHASED AS AN OPTION. BATTERY SIZING IS BASED ON A MAXIMUM 1 VOLT DROP PER HALF-STRING AT NOMINAL RATED DC CURRENT. CE SHALL ADJUST CABLE SIZE BASED ON INSTALLATION PARAMETERS.
- CABLE LUGS ARE PROVIDED BY OTHERS.

THIS DRAWING IS APPLICABLE TO THE FOLLOWING SKUs	
15kVA UPS SKUs	SUVT15KF2B2
	SUVT15KF2B4
	SUVT15KF3B4
	SUVT15KF4B4
XR BATTER SKUs	SUVTBXR2B6
	SUVTBXR6B6
	SUVTXR2B6
	SUVTXR6B6
BYPASS PANEL	SUVTSBPAR10K15F

LINETYPE LEGEND:	
	MECHANICAL ENCLOSURES
	AC CABLE - PROVIDED BY OTHERS
	AC BUS (MBP)
	BUS CONNECTIONS FOR BREAKERS
	DC BUS

**SINGLE MAINS, W/BAYED XR BATTERY CABINETS**

THIS DRAWING AND SPECIFICATIONS HEREIN ARE THE PROPERTY OF SCHNEIDER ELECTRIC AND SHALL NOT BE COPIED, REPRODUCED OR USED IN WHOLE OR IN PART, AS THE BASIS FOR THE MANUFACTURE OR SALE OF ITEMS WITHOUT WRITTEN PERMISSION FROM SCHNEIDER ELECTRIC. THIS DRAWING IS BASED UPON LATEST AVAILABLE INFORMATION AND IS SUBJECT TO CHANGE WITHOUT NOTICE.

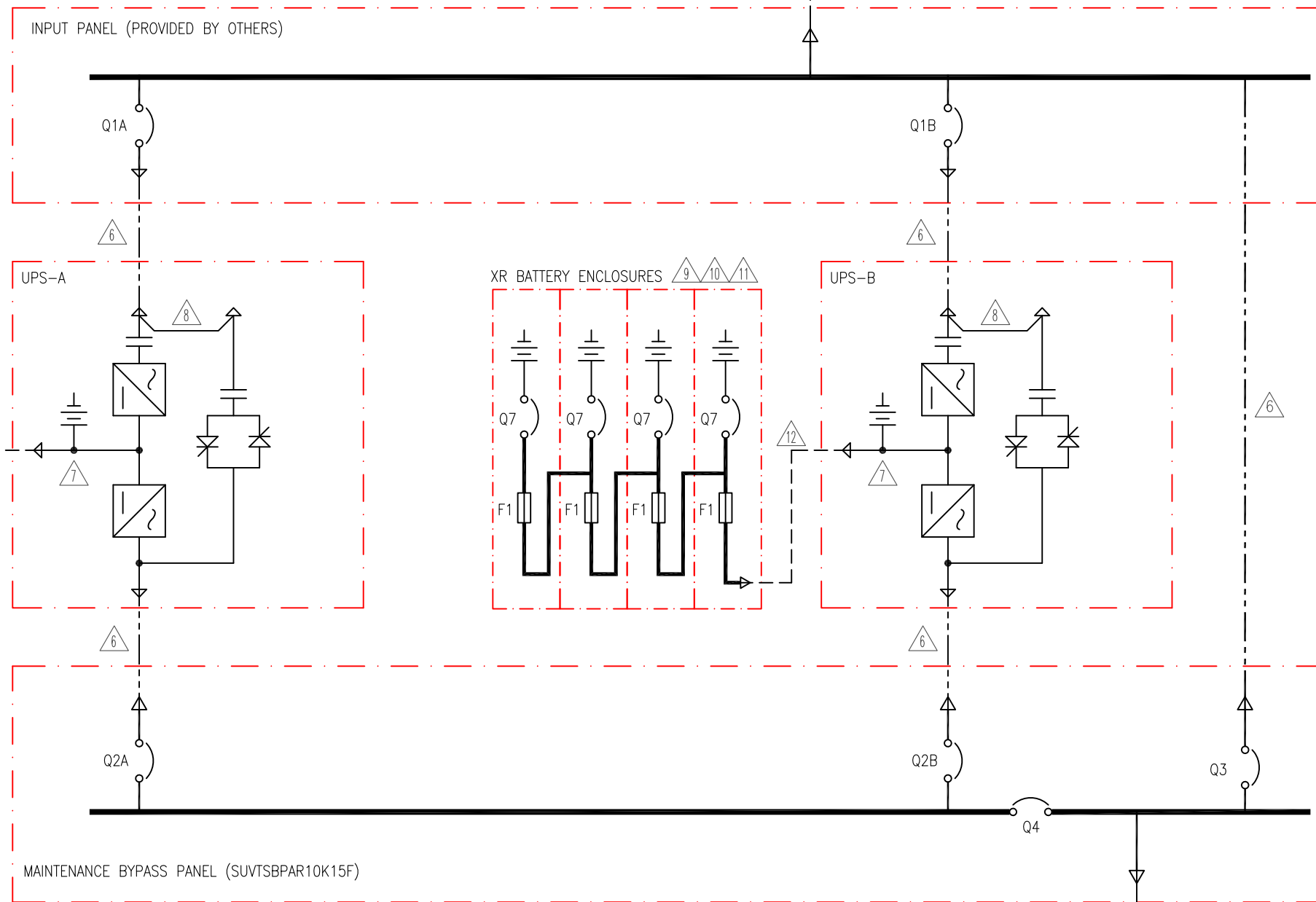
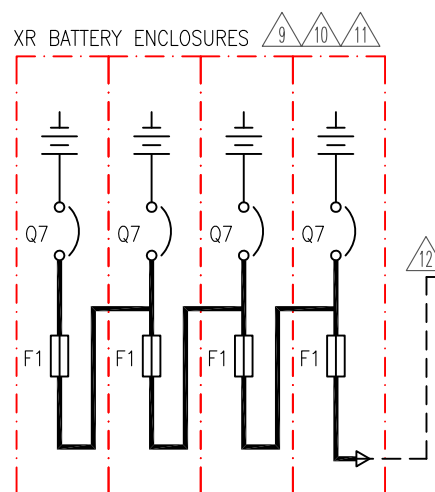


TITLE: SMART-UPS VT, PARALLEL SYSTEM  
INPUT: 208VAC, 3φ, SINGLE MAINS  
OUTPUT: 208VAC, 15kVA, N+1  
BAYED XR BATTERY ENCLOSURES  
SYSTEM ONE LINE DIAGRAM  
PROJECT: SUBMITTAL DRAWINGS | SHEET 1 OF 2

DWG NO:	REV.
SUVT15KF1R2-SD	2
DRAWN BY: B ZAHN/ BALA	24-AUG-16
ENGINEER: M LEPARD	24-AUG-16
APPROVED: F DIOSA/M MAISSY	24-AUG-16
	PROJ ANGLE N.A.

OVERCURRENT PROTECTION DEVICE TABLE						
DEVICE	FUNCTION	LOCATION	CURRENT	RATING*	TYPE	POLES
MIB†	SYS SOURCE	-	43.8A	60A†	MCCB	3
Q1	UPS AC IN	INPUT PANEL	40.2A	60A†	MCCB	3
Q2	UPS ANC OUT	BYPASS PANEL	41.6A	60AF	MCCB	4
Q3, Q4	SYS OUT	BYPASS PANEL	41.6A	175AF	MCCB	4
Q7	DC DISCONNECT	BATTERY CABINET	33.3A	250AF	MCCB	4
F1	BATTERY FUSE	BATTERY CABINET	33.3A	125A	FAST ACTING	1

\* 80% CONTINUOUS DUTY RATED FOR BREAKER  
† (PROVIDED BY OTHERS) RECOMMENDED RATING



**NOTES:**

- INSTALLATION SHALL COMPLY WITH ALL APPLICABLE NATIONAL, STATE AND LOCAL CODES.
- PLEASE REFER TO PRODUCT DOCUMENTATION FOR ADDITIONAL DETAILS.
- DRAWING DEPICTS POWER SYSTEM CONNECTIONS AND IS NOT REPRESENTATIVE OF PHYSICAL LAYOUT, PLEASE REFER TO MECHANICAL DRAWINGS FOR PHYSICAL LAYOUT.
- ALL BREAKERS ARE 80% CONTINUOUS DUTY RATED.
- AC SOURCE TO BE 208VAC, 4 WIRE, WYE CONNECTED, 3 $\phi$  (CONTACT SCHNEIDER ELECTRIC IF OTHER)
- AC CABLING TO BE 600V RATED, 4 WIRE + GROUND, AND SHALL BE RUN IN SEPARATE CONDUITS.
- DC SOURCE TO BE 384VDC WITH CENTER TAP, 3 WIRE + GROUND.
- SINGLE MAINS INSTALLATION IS A DEFAULT. BRIDGE BUS BARS SHALL NOT BE REMOVED.
- XR BATTERY ENCLOSURE IS AVAILABLE WITHOUT BREAKER WITH DC FUSE ONLY
- UP TO FOUR XR BATTERY ENCLOSURES MAY BE CONNECTED TO THE UPS TO EXTEND BACKUP TIME.
- EXTERNAL BATTERY CABINET IS OPTIONAL. BAYING KITS HAVE TO BE PURCHASED AS AN OPTION. BATTERY SIZING IS BASED ON A MAXIMUM 1 VOLT DROP PER HALF-STRING AT NOMINAL RATED DC CURRENT. CE SHALL ADJUST CABLE SIZE BASED ON INSTALLATION PARAMETERS.
- DC CABLING TO BE 600V RATED, 3W+GND, SHALL BE RUN IN SEPARATE CABLING CONDUITS.
- CABLE LUGS ARE PROVIDED BY OTHERS.

THIS DRAWING IS APPLICABLE TO THE FOLLOWING SKUs	
15kVA UPS SKUs	SUVT15KF2B2
	SUVT15KF2B4
	SUVT15KF3B4
	SUVT15KF4B4
XR BATTER SKUs	SUVTBXR2B6
	SUVTBXR6B6
	SUVTXR2B6
	SUVTXR6B6
BYPASS PANEL	SUVTSPAR10K15F

LINETYPE LEGEND:	
	MECHANICAL ENCLOSURES
	AC CABLE - PROVIDED BY OTHERS
	DC CABLE - PROVIDED BY OTHERS
	AC BUS (MBP)
	BUS CONNECTIONS FOR BREAKERS
	DC BUS

UPS SYSTEM OUTPUT  
15kVA, N+1, 208Y/120V, 3 $\phi$   
4W+GND

**SINGLE MAINS, W/REMOTE XR BATTERY CABINETS**

	THIS DRAWING AND SPECIFICATIONS HEREIN ARE THE PROPERTY OF SCHNEIDER ELECTRIC AND SHALL NOT BE COPIED, REPRODUCED OR USED IN WHOLE OR IN PART, AS THE BASIS FOR THE MANUFACTURE OR SALE OF ITEMS WITHOUT WRITTEN PERMISSION FROM SCHNEIDER ELECTRIC. THIS DRAWING IS BASED UPON LATEST AVAILABLE INFORMATION AND IS SUBJECT TO CHANGE WITHOUT NOTICE.		TITLE: SMART-UPS VT, PARALLEL SYSTEM INPUT: 208VAC, 3 $\phi$ , SINGLE MAINS OUTPUT: 208VAC, 15kVA, N+1 REMOTE XR BATTERY ENCLOSURES SYSTEM ONE LINE DIAGRAM	DWG NO: SUVTP15KF1R2-SD REV: 2
	PROJECT: SUBMITTAL DRAWINGS SHEET 2 OF 2	DRAWN BY: B ZAHN/ BALA ENGINEER: M LEPARD APPROVED: F DIOSA/M MAISSY	24-AUG-16 24-AUG-16 24-AUG-16	PROJ ANGLE N.A.