

WEIGHT AND RUNTIME DETAILS

SKU Number/ (Runtime in Minutes)	Runtime Details		Net Weight with YUASA Battery in kg	Net Weight with CSB Battery in kg
	Type and Quantity of Batteries			
	YUASA	CSB		
G3HT10K3IB1S (10 min)	NPW45-12 (32 numbers)	GP1272 (32 numbers)	233	228
G3HT10K3IB2S (30 min)	NPW45-12 (64 numbers)	GP1272 (64 numbers)	320	310
G3HT15K3IB1S (10 min)	NPW45-12 (32 numbers)	GP12120 (32 numbers)	233	270
G3HT15K3IB2S (30 min)	NPW45-12 (90 numbers)	GP1272 (90 numbers)	391	377

△CENTER OF GRAVITY DETAILS

Rating	Runtime in Min	SKU Number	COG Details in mm		
			X-Distance	Y-Distance	Z-Distance
10kVA	10	G3HT10K3IB1S	195	564	462
	30	G3HT10K3IB2S	196	554	478
15kVA	10	G3HT15K3IB1S	195	564	462
	30	G3HT15K3IB2S	203	548	441

NOTES:

- INSTALLATION SHALL COMPLY WITH ALL APPLICABLE NATIONAL AND LOCAL ELECTRICAL REGULATIONS.
- PLEASE REFER TO PRODUCT MANUALS FOR ADDITIONAL DETAILS.
- ALL DIMENSIONS ARE IN MILLIMETERS UNLESS OTHERWISE SPECIFIED.
- CABLE ENTRY IS REAR OF UNIT.
- REAR CLEARANCE: FOR VENTILATION MINIMUM 500mm FOR SERVICE MINIMUM 700mm.
- WEIGHT OF UNIT WITHOUT BATTERY IS 145kg AND WITH BATTERY IS 391kg (MAX.).
- COLOR: RAL 9023.
- ANCHORING BRACKETS ARE PART OF SKU AND PROVIDED BY APC.
- REFER TO TABLE FOR CENTER OF GRAVITY DETAILS.
- UPS SHOWN WITH YUASA BATTERIES, CONTACT APC FOR OTHER BATTERY DETAILS.
- UP TO TWO UPS UNITS CAN RUN IN PARALLEL WITH A DISTANCE UP TO 12m BETWEEN EACH OTHER.

THIS DRAWING AND SPECIFICATIONS HEREIN ARE THE PROPERTY OF SCHNEIDER ELECTRIC AND SHALL NOT BE COPIED, REPRODUCED OR USED IN WHOLE OR IN PART, AS THE BASIS FOR THE MANUFACTURE OR SALE OF ITEMS WITHOUT WRITTEN PERMISSION FROM SCHNEIDER ELECTRIC. THIS DRAWING IS BASED UPON LATEST AVAILABLE INFORMATION AND IS SUBJECT TO CHANGE WITHOUT NOTICE.



TITLE:

MGE GALAXY 300
INPUT: 400V, 3PH
OUTPUT: 10-15kVA, 400V, 1PH
MAIN MECHANICAL

DWG NO:

G3HT10K3I15

REV: 2

DRAWN: C KRISHNA

17-JUL-15

FIRST

ENGINEER: ALEX ZHANG

17-JUL-15

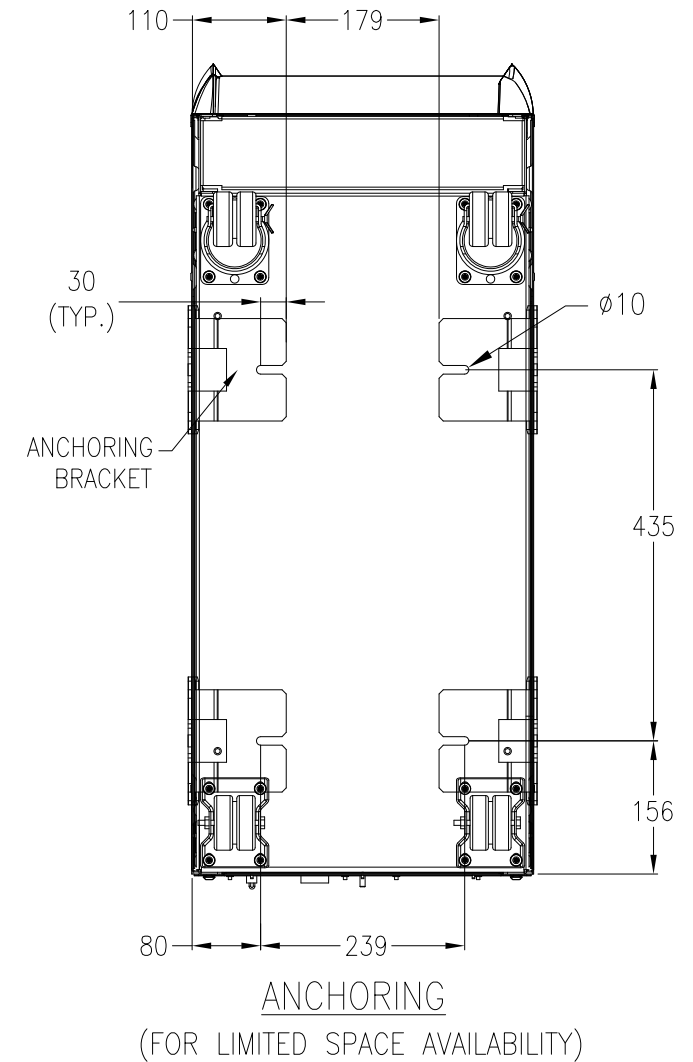
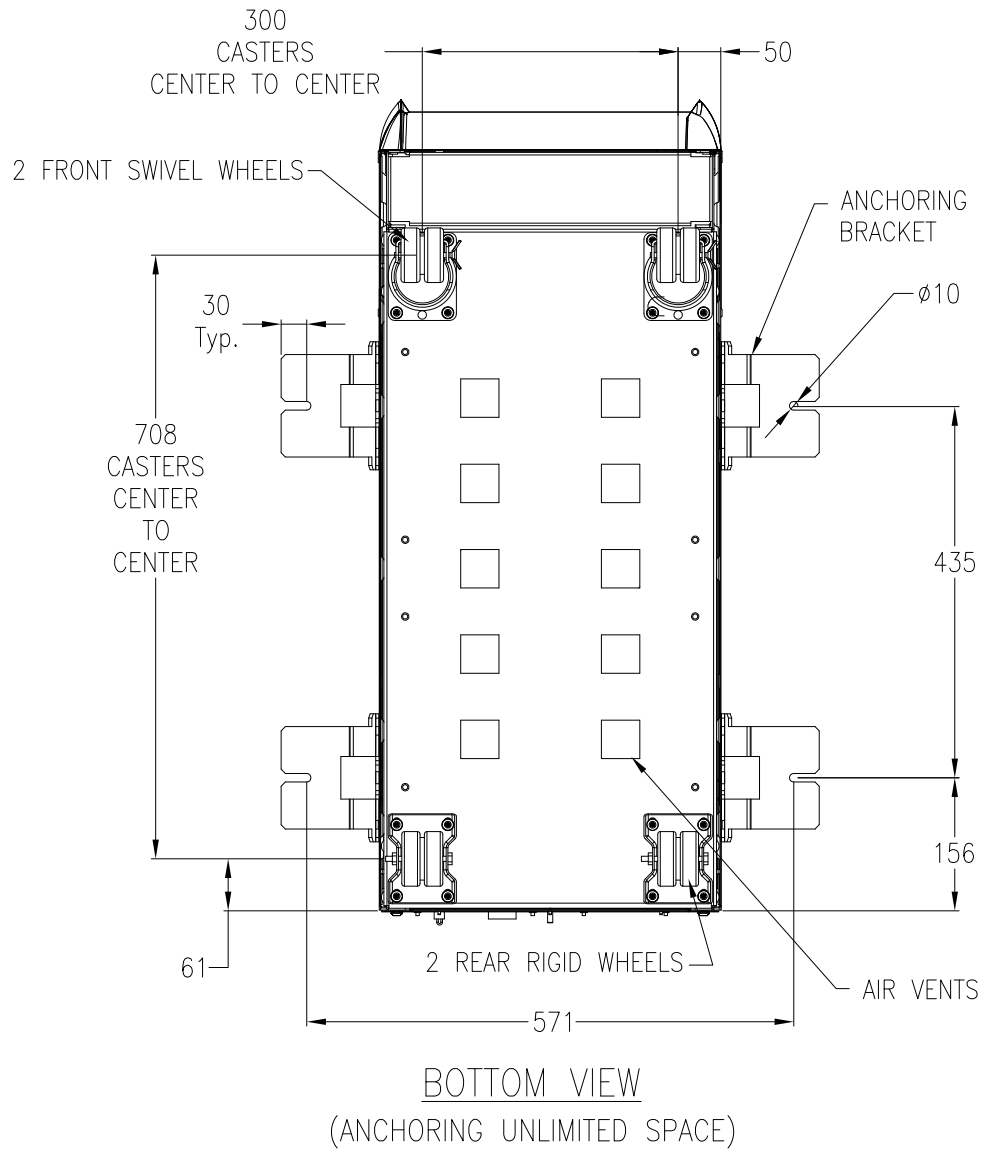
ANGLE

PROJECT: SUBMITTAL DRAWINGS SHEET 1 OF 5

APPROVED: C.LARSEN/S.WAGH

17-JUL-15

PROJECTION



NOTES:

1. INSTALLATION SHALL COMPLY WITH ALL APPLICABLE NATIONAL AND LOCAL ELECTRICAL REGULATIONS.
2. PLEASE REFER TO PRODUCT MANUALS FOR ADDITIONAL DETAILS.
3. ALL DIMENSIONS ARE IN MILLIMETERS UNLESS OTHERWISE SPECIFIED.
4. SOME STRUCTURAL DETAILS HAVE BEEN OMITTED FOR THE PURPOSE OF CLARITY.

THIS DRAWING AND SPECIFICATIONS HEREIN ARE THE PROPERTY OF SCHNEIDER ELECTRIC AND SHALL NOT BE COPIED, REPRODUCED OR USED IN WHOLE OR IN PART, AS THE BASIS FOR THE MANUFACTURE OR SALE OF ITEMS WITHOUT WRITTEN PERMISSION FROM SCHNEIDER ELECTRIC. THIS DRAWING IS BASED UPON LATEST AVAILABLE INFORMATION AND IS SUBJECT TO CHANGE WITHOUT NOTICE.

**Schneider
Electric**

TITLE:
MGE GALAXY 300
INPUT: 400V, 3PH
OUTPUT: 10-15kVA, 400V, 1PH
BOTTOM VIEW AND ANCHORING DETAILS

DWG NO: G3HT10K3115

REV. 1

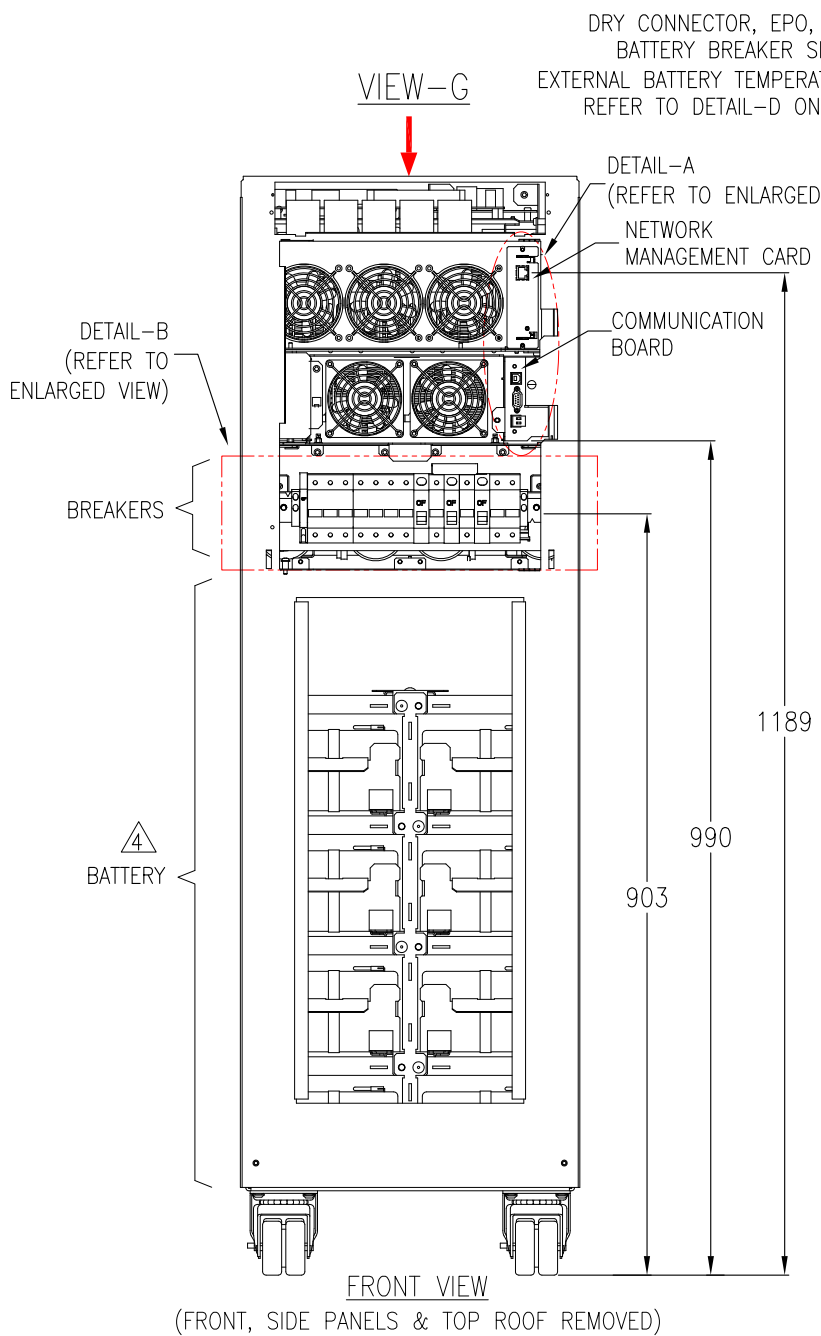
DRAWN: C KRISHNA 17-JUL-15

ENGINEER: ALEX ZHANG 17-JUL-15

APPROVED: C.LARSEN/S.WAGH 17-JUL-15

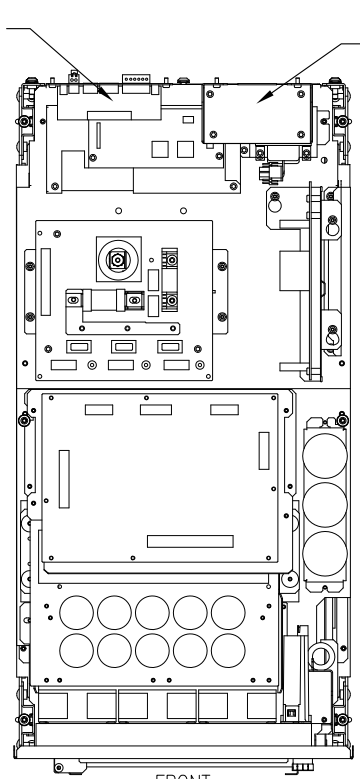
FIRST
ANGLE
PROJECTION

PROJECT: SUBMITTAL DRAWINGS SHEET 2 OF 5

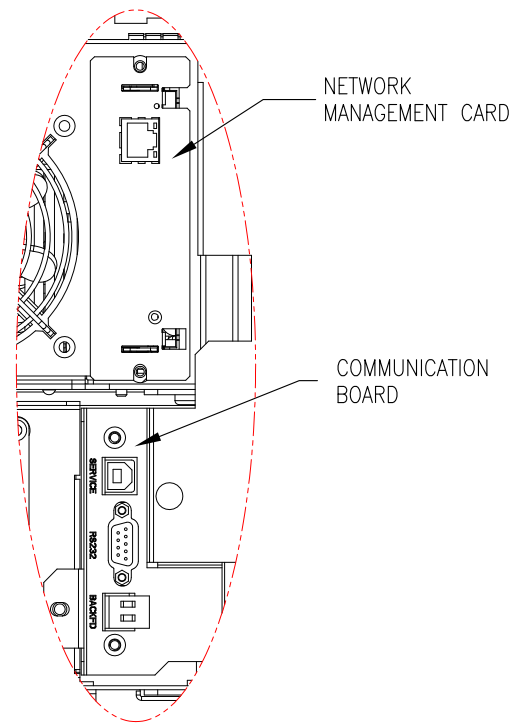


DRY CONNECTOR, EPO, EXTERNAL BATTERY BREAKER SIGNAL AND EXTERNAL BATTERY TEMPERATURE(ATIZ) REFER TO DETAIL-D ON SHEET-4

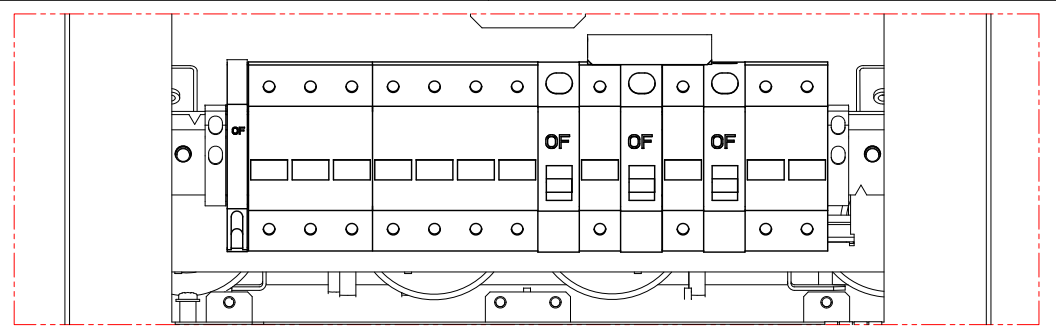
PARALLEL BOARD (WILL BE MOUNTED WHEN THE UNIT INSTALLED IN A PARALLEL CONFIGURATION)



FRONT VIEW-G DETAILS



DETAIL-A (ENLARGED VIEW) (NETWORK CARD & COMMUNICATION CARD)



DETAIL-B (ENLARGED VIEW) (BREAKER DETAILS)

- NOTES:
1. INSTALLATION SHALL COMPLY WITH ALL APPLICABLE NATIONAL AND LOCAL ELECTRICAL REGULATIONS..
 2. PLEASE REFER TO PRODUCT MANUALS FOR ADDITIONAL DETAILS.
 3. ALL DIMENSIONS ARE IN MILLIMETERS UNLESS OTHERWISE SPECIFIED.
 - △ 4. BATTERY ARRANGEMENT SHOWN FOR MAXIMUM RUNTIME CONFIGURATION. BATTERY TYPE - YUASA (NPW45-12).
 5. SOME STRUCTURAL DETAILS HAVE BEEN OMITTED FOR THE PURPOSE OF CLARITY.

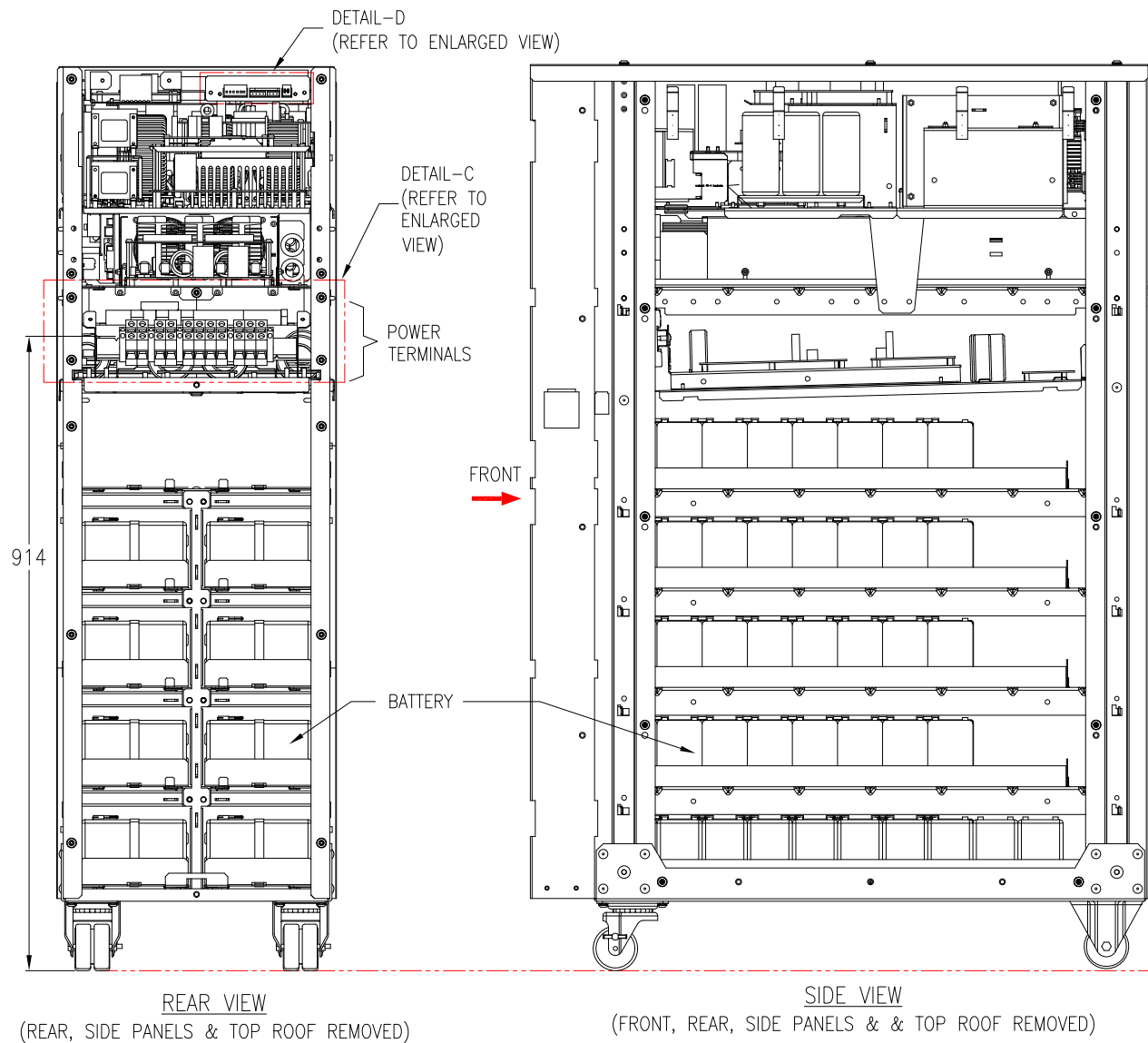
THIS DRAWING AND SPECIFICATIONS HEREIN ARE THE PROPERTY OF SCHNEIDER ELECTRIC AND SHALL NOT BE COPIED, REPRODUCED OR USED IN WHOLE OR IN PART, AS THE BASIS FOR THE MANUFACTURE OR SALE OF ITEMS WITHOUT WRITTEN PERMISSION FROM SCHNEIDER ELECTRIC. THIS DRAWING IS BASED UPON LATEST AVAILABLE INFORMATION AND IS SUBJECT TO CHANGE WITHOUT NOTICE.



TITLE:
MGE GALAXY 300
INPUT: 400V, 3PH
OUTPUT: 10-15kVA, 400V, 1PH
INTERNAL VIEW-1 AND DETAILS
PROJECT: SUBMITTAL DRAWINGS SHEET 3 OF 5

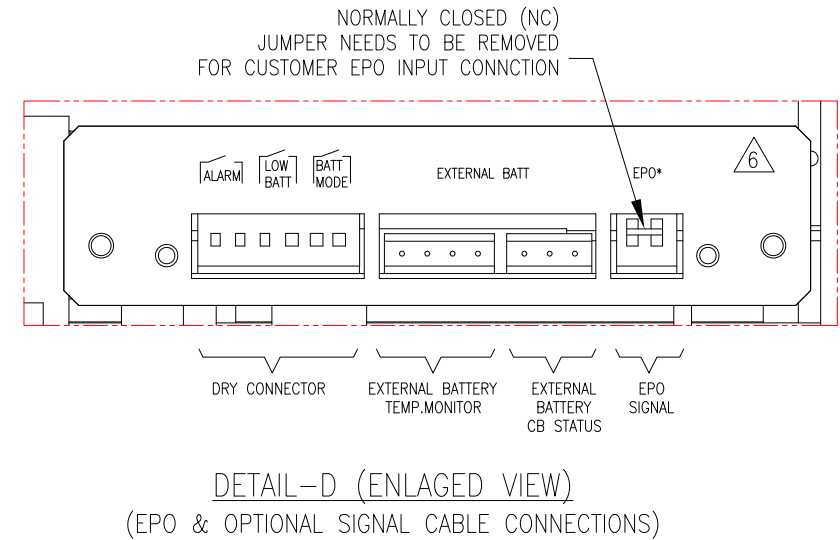
DWG NO: G3HT10K3115
REV: 1
DRAWN: JP / KN 24-NOV-15
ENGINEER: ALEX ZHANG 24-NOV-15
APPROVED: S.ANDERSEN/S.WAGH 24-NOV-15

FIRST ANGLE PROJECTION

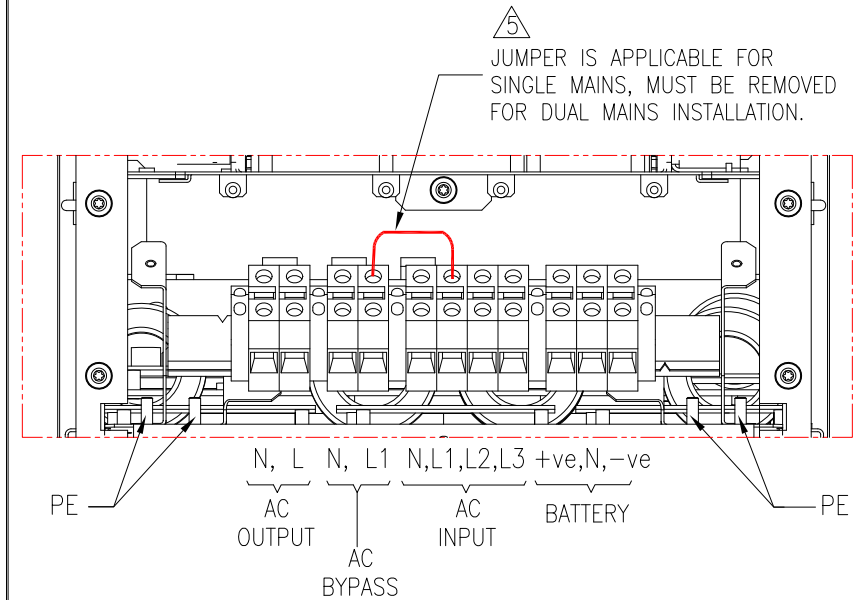


REAR VIEW
(REAR, SIDE PANELS & TOP ROOF REMOVED)

SIDE VIEW
(FRONT, REAR, SIDE PANELS & & TOP ROOF REMOVED)



DETAIL-D (ENLARGED VIEW)
(EPO & OPTIONAL SIGNAL CABLE CONNECTIONS)



DETAIL-C (ENLARGED VIEW)
(CABLE TERMINALS DETAILS)
REFER TO SHEET-5 FOR RECOMMENDED CABLE SIZES

- NOTES:
1. INSTALLATION SHALL COMPLY WITH ALL APPLICABLE NATIONAL AND LOCAL ELECTRICAL REGULATIONS.
 2. PLEASE REFER TO PRODUCT MANUALS FOR ADDITIONAL DETAILS.
 3. ALL DIMENSIONS ARE IN MILLIMETERS UNLESS OTHERWISE SPECIFIED.
 4. SOME STRUCTURAL DETAILS HAVE BEEN OMITTED FOR THE PURPOSE OF CLARITY.
 - △ 5. GALAXY300 UPS IS DESIGNED FOR SINGLE AND DUAL MAINS.
SINGLE MAINS INSTALLATION IS A DEFAULT.
 - △ 6. PLEASE REFER TO CORRESPONDING WIRING DIAGRAMS FOR INTERFACING DETAILS.

THIS DRAWING AND SPECIFICATIONS HEREIN ARE THE PROPERTY OF SCHNEIDER ELECTRIC AND SHALL NOT BE COPIED, REPRODUCED OR USED IN WHOLE OR IN PART, AS THE BASIS FOR THE MANUFACTURE OR SALE OF ITEMS WITHOUT WRITTEN PERMISSION FROM SCHNEIDER ELECTRIC. THIS DRAWING IS BASED UPON LATEST AVAILABLE INFORMATION AND IS SUBJECT TO CHANGE WITHOUT NOTICE.

Schneider Electric

TITLE:

MGE GALAXY 300
INPUT: 400V, 3PH
OUTPUT: 10-15kVA, 400V, 1PH
INTERNAL VIEW-2 AND DETAILS

PROJECT: SUBMITTAL DRAWINGS SHEET 4 OF 5

DWG NO:

G3HT10K3115

DRAWN: C KRISHNA
ENGINEER: ALEX ZHANG

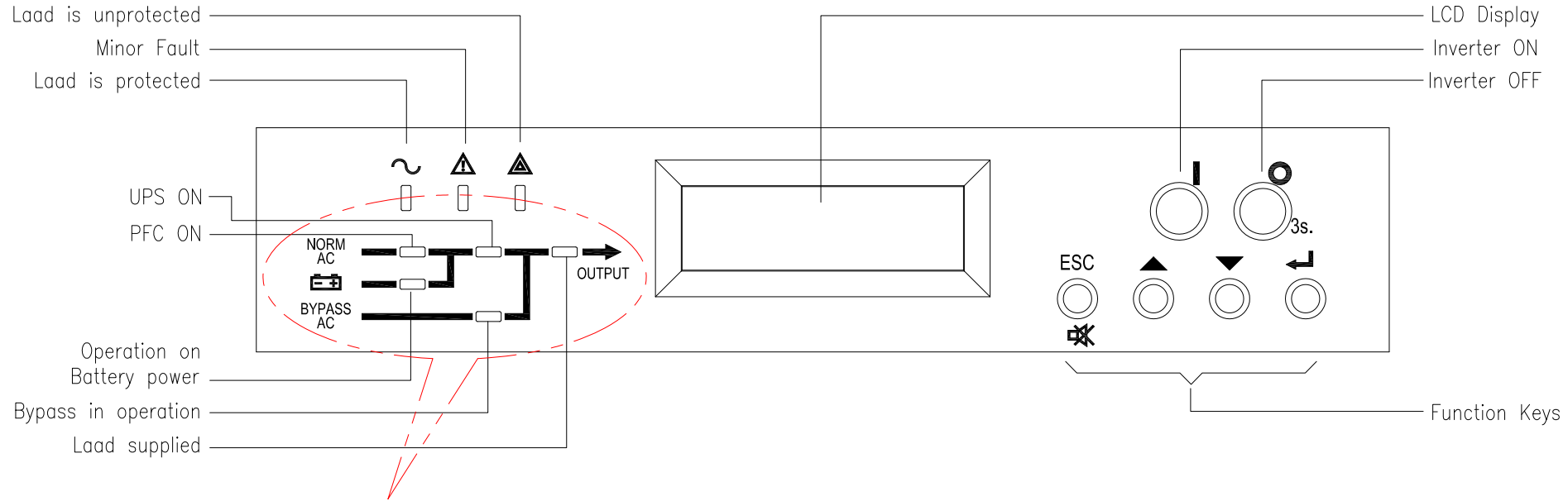
APPROVED: C.LARSEN/S.WAGH

REV:

2

17-JUL-15
17-JUL-15
17-JUL-15
FIRST ANGLE PROJECTION

DISPLAY INTERFACE (ENLARGED VIEW)



LED Status of the flow diagram
 GREEN—when the function is active
 RED—when a fault has occurred in the function
 OFF—when the function is inactive

NOTES:

1. WIRING SHALL COMPLY WITH ALL APPLICABLE NATIONAL AND LOCAL ELECTRICAL REGULATIONS.
2. PLEASE REFER TO PRODUCT MANUALS FOR ADDITIONAL DETAILS.

THIS DRAWING AND SPECIFICATIONS HEREIN ARE THE PROPERTY OF SCHNEIDER ELECTRIC AND SHALL NOT BE COPIED, REPRODUCED OR USED IN WHOLE OR IN PART, AS THE BASIS FOR THE MANUFACTURE OR SALE OF ITEMS WITHOUT WRITTEN PERMISSION FROM SCHNEIDER ELECTRIC. THIS DRAWING IS BASED UPON LATEST AVAILABLE INFORMATION AND IS SUBJECT TO CHANGE WITHOUT NOTICE.



TITLE:	MGE GALAXY 300 INPUT: 400V, 3PH OUTPUT: 10-15kVA, 400V, 1PH	DWG NO:	G3HT10K3115	REV.	1
PROJECT: SUBMITTAL DRAWINGS	SHEET 5 OF 5	DRAWN:	C KRISHNA	26-APR-11	FIRST ANGLE PROJECTION
		ENGINEER:	ALEX ZHANG	29-APR-11	
		APPROVED:	C.LARSEN/S.WAGH	29-APR-11	