

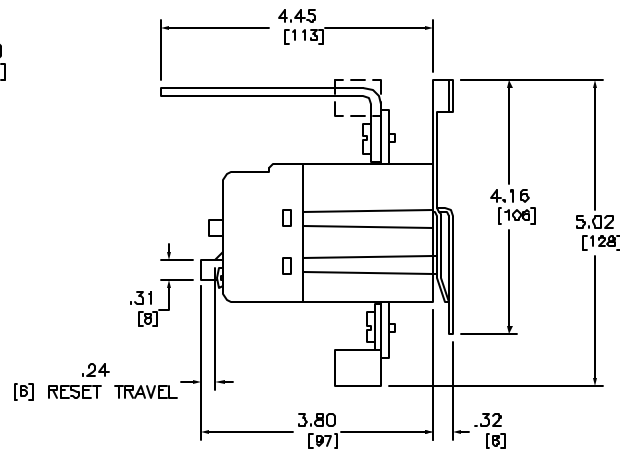
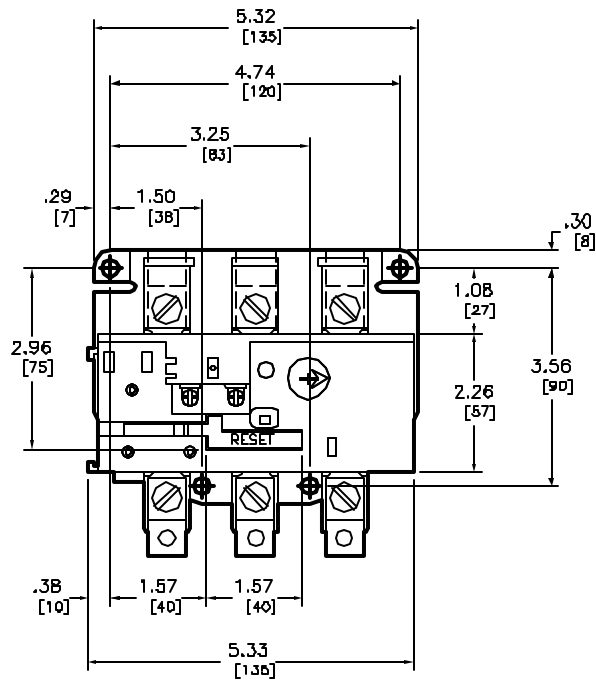
SOLID STATE OVERLOAD RELAY - 600V AC MAXIMUM

NEMA SIZE	FULL LOAD CURRENT RANGE (AMPERES)	BASE UNIT		FEATURE UNIT
		TRIP CLASS 10 CODE (1)	TRIP CLASS 20 CODE (1)	TRIP CLASS 10/20 CODE (1)
3	30-90	310	320	320

TIGHTENING TORQUE

LUG KIT	#14-1/0 AWG	100 lb-in
POWER WIRE		
CONTROL WIRE	#16-12 AWG (TWO PER TERMINAL)	-

TYPE CODE (2)	SOLID STATE OVERLOAD RELAY
SS	BASE UNIT
* SR	
SF	FEATURE UNIT
* ST	



BASE UNIT RELAYS INCLUDE:
 3 to 1 adjustment for trip current;
 Phase loss and unbalance protection;
 Direct replacement for Type S melting alloy;
 and LED power indication.
 They are ambient insensitive and self powered.
 Electrical remote reset is also available.

FEATURE UNIT RELAYS INCLUDE:
 All the features found on the Base Unit plus:
 Switch selectable trip class;
 and Class II ground fault detection.
 These units accept the Analog Output Module.

* = Replacement SSOLR for Retrofit of Square D Type S Starter.

Catalog Number: 9065-(2) (1)
 Ratings: SEE CHART
 UL File/CCN: NKCR-7
 CSA File/Class: 32011-03
 Meets Standards: -
 Weight: 2.88 lbs
 Wire Size: SEE CHART
 Terminal torque: SEE CHART
 Mounting Hwd.: (4) #1/4-20 screws

DUAL DIMENSIONS: INCHES
 MILLIMETERS

SOLID STATE OVERLOAD RELAY
 CLASS 9065 TYPE DPA (2) (1)

SQUARE D
 Schneider Electric

DWG# E0320201-01
 NO.