

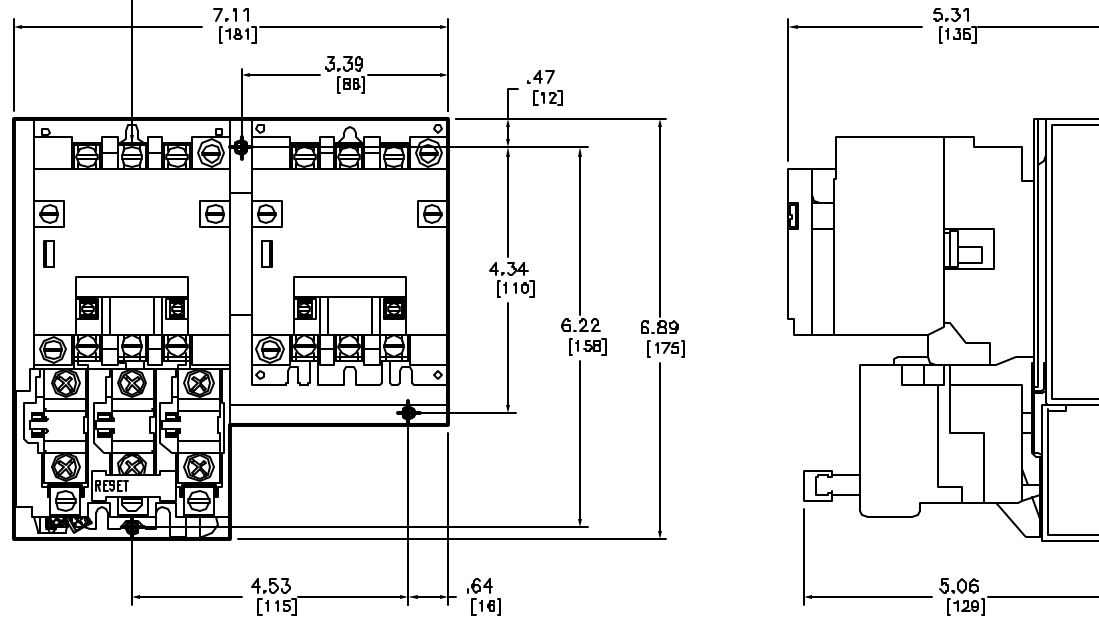
NEMA SIZE 0 REVERSING STARTER
3-POLE POLYPHASE - 600 VAC, 50-60 HZ

| COIL VOLTAGE CODE (1) | VOLTAGE | |
|-----------------------|---------|---------|
| | 60 HZ | 50 HZ |
| V01 | 24 | - |
| VD2 | 120 | 110 |
| VD8 | 208 | - |
| VD3 | 240 | 220 |
| VD6 | 480 | 440 |
| VD7 | 600 | 550 |
| V08 | SPECIFY | SPECIFY |

ELECTRICAL CLEARANCE/WIRE BENDING SPACE

1.50
[38]

MINIMUM TO WALL OR BARRIER TO INSURE ADEQUATE
WIRE BENDING SPACE TO LUG SURFACE WHEN
THE MAXIMUM WIRE SIZE IS USED. REF. NEC 4.30-10



Catalog Number: 8736-SB04(1)
 Ratings: SEE CHART
 UL File/CCN: E78351/NLDX
 CSA File/Class: LR80906/3211 0
 Meets Standards: -
 Weight: 7.3 lbs
 Wire Size: POWER - #14-#8, CONTROL - #16-#12
 Terminal torque: 20 LB/IN
 Mounting Hwd.: (3) #10 screws

DUAL DIMENSIONS: INCHES
MILLIMETERS

NEMA SIZE 0 REVERSING STARTER
CLASS 8736 TYPE SB04(1)

SQUARE D
Schneider Electric

DWG# E0302001-01
NO.