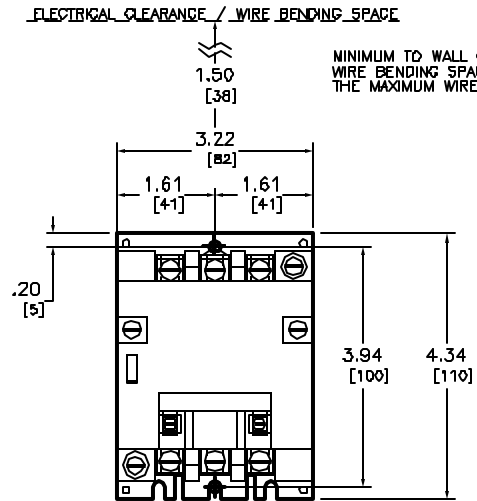
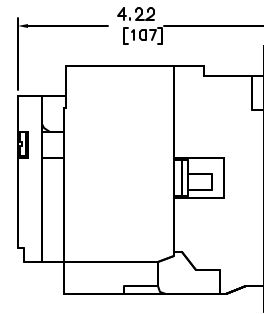


NEMA SIZE 00 CONTACTOR
3-POLE POLYPHASE - 600 VAC, 50-60 HZ

COIL VOLTAGE CODE (1)	VOLTAGE	
	60 HZ	50 HZ
V01	24	-
V02	120	110
V08	208	-
V03	240	220
V06	480	440
V07	600	550
V09	SPECIFY	SPECIFY



MINIMUM TO WALL OF BARRIER TO INSURE ADEQUATE
WIRE BENDING SPACE TO LUG SURFACE WHEN
THE MAXIMUM WIRE SIZE IS USED REF. NEC 430-10



Catalog Number: B502-SAD12(1)
 Ratings: SEE CHART
 UL File/CQN: E78351/NLDX
 CSA File/Class: LR6D905-3211 D
 Meets Standards: -
 Weight: 4.00 LB
 Wire Size: POWER - #14-#8, CONTROL - #16-#12
 Terminal torque: 20 LB/IN
 Mounting Hwd.: (2) #10 screw

DUAL DIMENSIONS: INCHES
MILLIMETERS

NEMA SIZE 0 CONTACTOR
CLASS 5002 TYPE SA02(1)



DWG# E0300201-01
NO.