

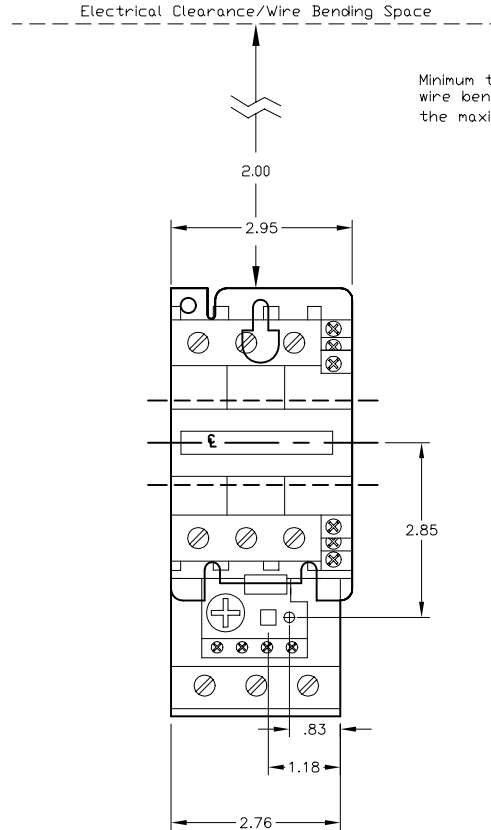
CLASS 10 OVERLOAD RELAYS

CURRENT SETTING RANGE (AMPS)	CATALOG NUMBER
23-32	LR2 D33 53
30-40	LR2 D33 55
37-50	LR2 D33 57
48-65	LR2 D33 59
55-70	LR2 D33 61
63-80	LR2 D33 63

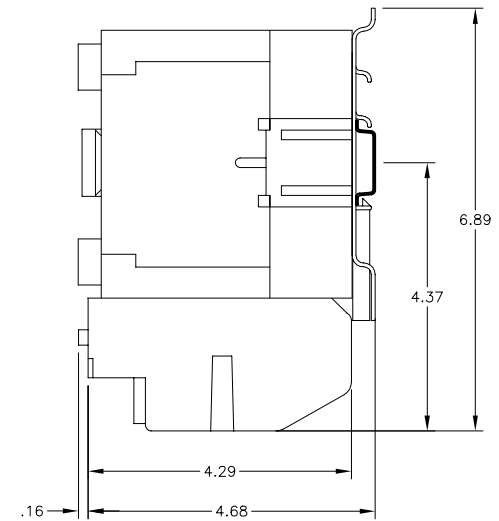
CLASS 20 OVERLOAD RELAYS

CURRENT SETTING RANGE (AMPS)	CATALOG NUMBER
17-25	LR2 D35 22
23-32	LR2 D35 53
30-40	LR2 D35 55
37-50	LR2 D35 57
48-65	LR2 D35 59
55-70	LR2 D35 61
63-80	LR2 D35 63

(1) = SELECT DESIRED SUFFIX FOR COMPLETE CATALOG NUMBER



Minimum to wall or barrier to insure adequate wire bending space to lug surface when the maximum wire size is used. REF. NEC 430-10



Catalog Number: LR2 D3(1) on LC1 D50  
 Ratings: Ratings shown are for LR2 D3(1) only. For contactor ratings see contactor file.  
 UL File/CCN: E39281/NKCR  
 CSA File/Class: LR43364/3211 03  
 Meets Standards: IEC 947  
 Weight: .51kg  
 Wire Size: Power #4-#6 / Control #10-#18  
 Terminal torque: 75 LB-IN  
 Mounting Hwd: 35mm DIN rail, #8 screws

"THE SQUARE D COMPANY HAS PROPRIETARY RIGHTS TO THE INFORMATION CONTAINED HEREON. THIS INFORMATION REMAINS THE PROPERTY OF SQUARE D COMPANY AND MAY BE USED ONLY IN CONFORMANCE WITH INSTRUCTIONS ISSUED BY SQUARE D COMPANY. USER SHOULD VERIFY DRAWINGS ARE TO THE LATEST/CURRENT REVISION PRIOR TO INCORPORATING IN A DESIGN FILE."

**DO NOT SCALE DRAWING**  
 UNLESS OTHERWISE SPECIFIED DIMENSIONS ARE IN INCHES

THIRD ANGLE PROJECTION

**TOLERANCES**  
 UNLESS OTHERWISE SPECIFIED  
 2 PLACE DECIMALS ± .01

IEC STARTER  
 LC1 D50 WITH LR2 D3(1)

**SQUARE D COMPANY**

DWG# E0201801-01  
 NO.