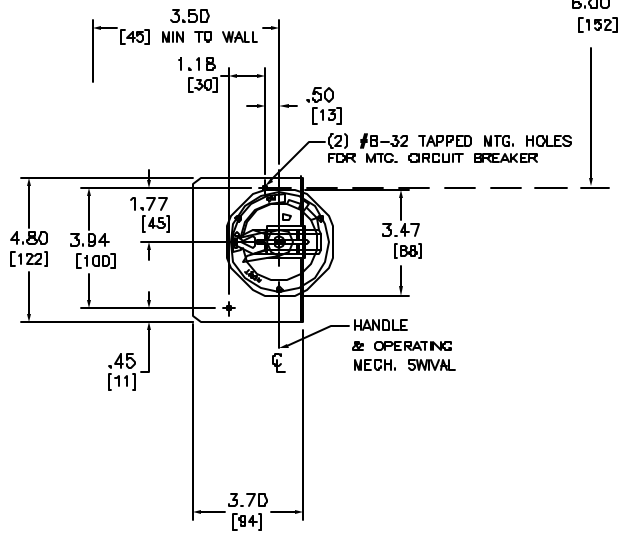
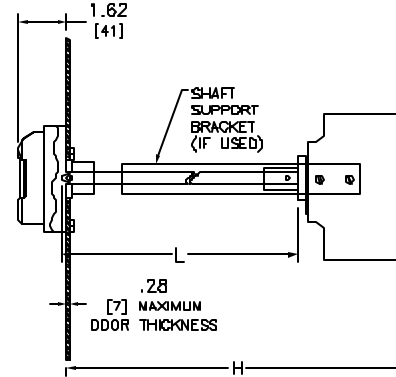
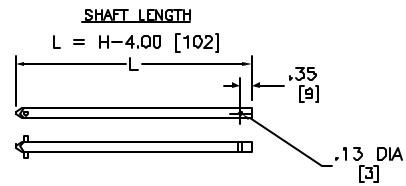


MINIMUM TO WALL OR BARRIER TO INSURE ADEQUATE WIRE BENDING SPACE TO LUG SURFACE WHEN THE MAXIMUM WIRE SIZE IS USED. REF. NEC 430-10

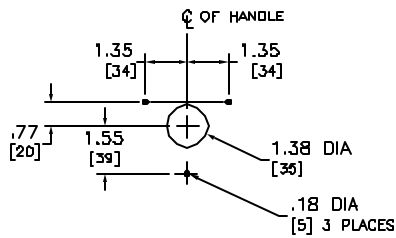
ELECTRICAL CLEARANCE/WIRE BENDING SPACE



FRONT VIEW W/NW3 HANDLE



SIDE VIEW W/NW3 HANDLE



ENCLOSURE DOOR DRILLING

TYPE	HANDLE CAT. NUM.		SHAFT TYPE	SHAFT CAT. NUM.
	RED/YELLOW	BLACK		
LGB	NW3	NW3B	STANDARD	NS16
LGB	NW3	NW3B	LONG	NS33B

DIMENSION H W/STANDARD SHAFT				DIMENSION H W/LONG SHAFT			
MIN		MAX		MIN		MAX	
IN	MM	IN	MM	IN	MM	IN	MM
6.13	155	10.75	275	6.13	155	17.88	450

SHAFT LENGTH FORMULA: $L = H - 4.00$ [102]
MOUNTING DEPTH (H): MEASURED FROM THE CIRCUIT BREAKER MOUNTING SURFACE TO THE OUTSIDE OF THE ENCLOSURE DOOR.

IF THE SHAFT LENGTH IS GREATER THAN 10" A SHAFT SUPPORT BRACKET MUST BE USED. IT WILL BE SUPPLIED WITH THE 9421 NS33B.

Catalog Number: 9421-LGB
 Ratings: FOR USE W/GUL 3 POLE CIRCUIT BREAKER
 UL File/CCN: E82922/DIHS2
 CSA File/Class: -
 Meets Standards: -
 Weight: 4.5 lbs
 Wire Size: -
 Terminal torque: -
 Mounting Hwd.: (2) #8-32 SCREWS

DUAL DIMENSIONS: INCHES
MILLIMETERS

OPERATING MECHANISM
CLASS 9421 TYPE LGB



DWG# E0104200
ND.