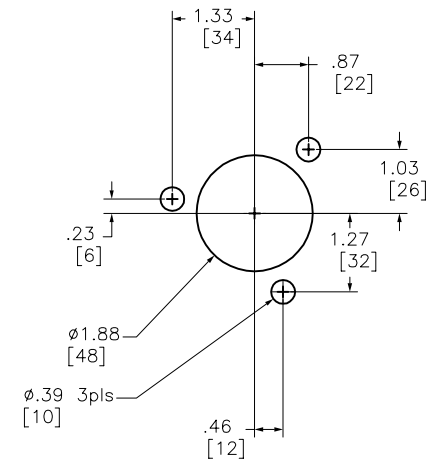


ROTARY HANDLE ENCLASURE
DOOR DRILLING



Catalog Number: D10S2, D10S2H
 Ratings: STARTER NEMA SIZE 2 (60A/600V)
 UL File/CCN: E6849
 CSA File/Class: LR12721
 Meets Standards:
 Weight: D10S2-5.6 lbs/D10S2H-4.51 lbs
 Wire Size: #14-#4
 Terminal torque: 35-45 lb-in
 Mounting Hwd: (4)-1/4-20 screws

"THE SQUARE D COMPANY HAS PROPRIETARY RIGHTS TO THE INFORMATION CONTAINED HEREON. THIS INFORMATION REMAINS THE PROPERTY OF SQUARE D COMPANY AND MAY BE USED ONLY IN CONFORMANCE WITH INSTRUCTIONS ISSUED BY SQUARE D COMPANY. USER SHOULD VERIFY DRAWINGS ARE TO THE LATEST/CURRENT REVISION PRIOR TO INCORPORATING IN A DESIGN FILE."

DO NOT SCALE DRAWING
 UNLESS OTHERWISE SPECIFIED DIMENSIONS ARE IN INCHES

THIRD ANGLE PROJECTION

TOLERANCES
 UNLESS OTHERWISE SPECIFIED
 2 PLACE DECIMALS ± .01

DISCONNECT
 D10S2, D10S2H

SQUARE D COMPANY

DWG# D10S_OUTLINE_002
 NO.