

OUTPUT 1000kW 480V, 3PH, 60Hz 3 WIRE+GROUND

LEGEND:
 - - - - - AC CABLE (PROVIDED BY OTHERS)
 - - - - - 500VDC CABLE (PROVIDED BY OTHERS)

- NOTES:**
1. INSTALLATION SHALL COMPLY WITH ALL APPLICABLE LOCAL AND NATIONAL ELECTRICAL CODES.
 2. AC INPUT SOURCE MUST BE 480V AC, 3W+G, EITHER SOLIDLY OR HIGH RESISTANCE GROUNDED (CONTACT SCHNEIDER ELECTRIC IF OTHER). REFER TO INSTALLATION MANUAL FOR CIRCUIT BREAKER REQUIREMENTS.
 - Δ3. THIS SYSTEM SHALL BE INSTALLED AS A SEPARATELY DERIVED SYSTEM IN ACCORDANCE WITH LOCAL AND NATIONAL ELECTRIC CODE ARTICLE 250.30(g)(3). THE GROUNDED ELECTRODE CONDUCTOR IS PROVIDED BY OTHERS.
 4. CABLE LUGS ARE PROVIDED BY OTHERS.
 5. DC CABLE RATINGS ARE SUPPLIED AS GUIDELINE RECOMMENDATION ONLY AND SHOULD NOT BE CONSIDERED SUBSTITUTED FOR REVIEW. COMPLIANCE WITH NATIONAL OR LOCAL ELECTRICAL CODES. CONSULT YOUR LICENSED ENGINEER OF RECORDS FOR SITE-SPECIFIC "10MS L/R TIME CONSTANT CALCULATIONS (V_DROP 1VMIN)" FOR OVER-CURRENT PROTECTION AND RUNTIMES.

OVER CURRENT PROTECTION DEVICE FOR UPS 1000KVA WITH INTERNAL POWER MODULE REDUNDANCY (SKU# GVX1250K1000GS)				
LOCATION	BREAKER RATING	RMS SYM	TYPE	ACCESSORIES
UPS INPUT (UIB)	2000AF/1600AT			
UPS OUTPUT (UOB)	1600AF/1200AT	100KAIC	ICCB	3A/3B AUX
BATTERY	TBD	50KAIC	MCCB	24V DC UVR 2A/2B AUX

CURRENT DATA IN AMPS UPS1000KVA WITH INTERNAL POWER MODULE REDUNDANCY (SKU# GVX1250K1000GS)	
M1 INPUT	1456
UPS OUTPUT	1203
FULL LOAD BATTERY CURRENT (@ VMIN)	2728

THIS DRAWING AND SPECIFICATIONS HEREIN ARE THE PROPERTY OF SCHNEIDER ELECTRIC AND SHALL NOT BE COPIED, REPRODUCED OR USED IN WHOLE OR IN PART, AS THE BASIS FOR THE MANUFACTURE OR SALE OF ITEMS WITHOUT WRITTEN PERMISSION FROM SCHNEIDER ELECTRIC. THIS DRAWING IS BASED UPON LATEST AVAILABLE INFORMATION AND IS SUBJECT TO CHANGE WITHOUT NOTICE.

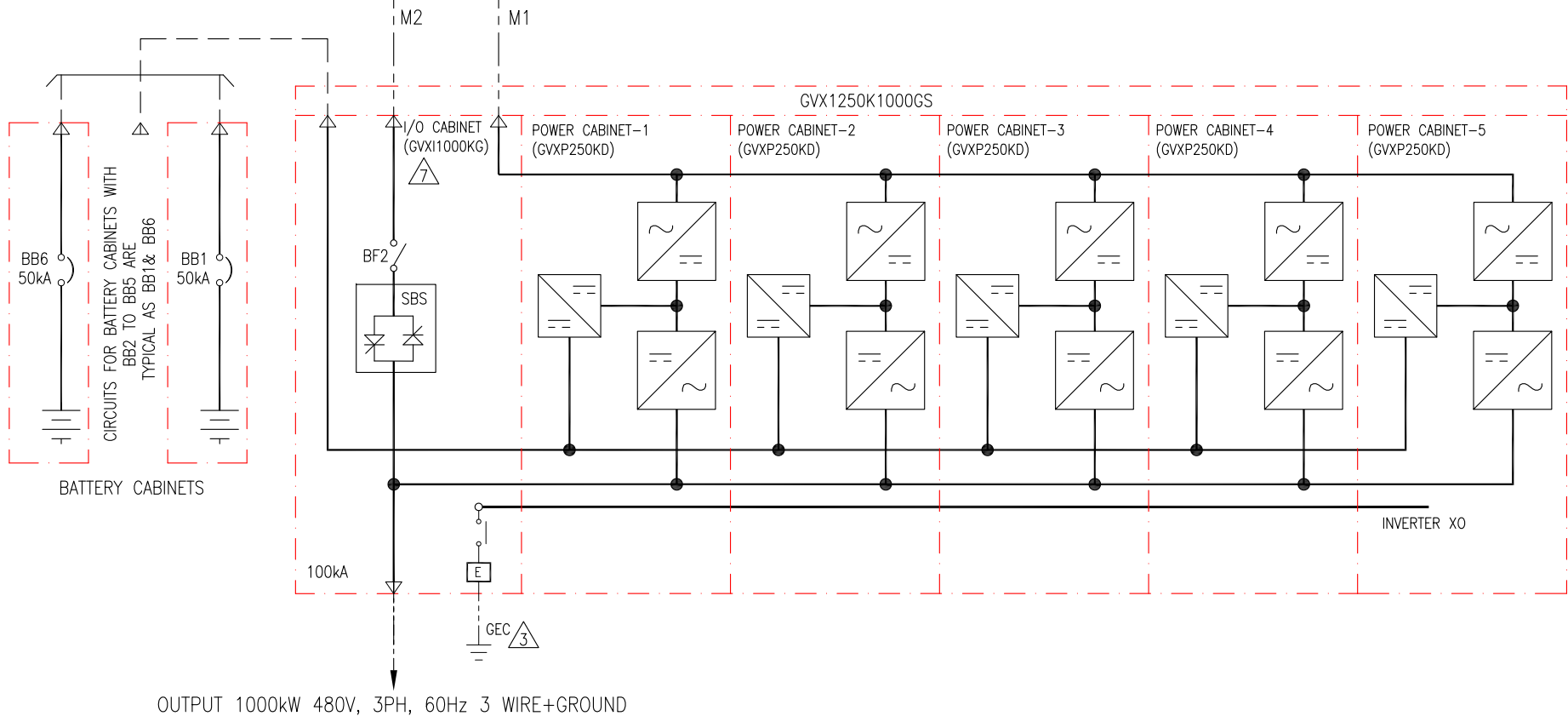


TITLE: GALAXY VX
 Input: 480V AC 3PH 60Hz SINGLE FEED
 Output: 480V AC 3PH 60Hz 1000kVA
 1 MOD 1000kVA UPS W/INTERNAL REDUNDANCY& CBC SYSTEM ONE LINE DIAGRAM
PROJECT: DRAWINGS **SHEET 1 OF 2**

DWG NO: GVX1250K1000GCBC-SD	REV. 3
DRAWN BY: BALA	04-OCT-17
ENGINEER: H N	04-OCT-17
APPROVED BY: N B	04-OCT-17

ANGLE
 PROJECTION
 N. A.

INPUT 480V 3PH, 60Hz
3 WIRE+GROUND 100kA RMS
MAXIMUM (PROVIDED BY OTHERS)



OUTPUT 1000kW 480V, 3PH, 60Hz 3 WIRE+GROUND

LEGEND:
 - - - - - AC CABLE (PROVIDED BY OTHERS)
 - - - - - 500VDC CABLE (PROVIDED BY OTHERS)

- NOTES:
1. INSTALLATION SHALL COMPLY WITH ALL APPLICABLE LOCAL AND NATIONAL ELECTRICAL CODES.
 2. AC INPUT SOURCE MUST BE 480V AC, 3W+G, EITHER SOLIDLY OR HIGH RESISTANCE GROUNDING (CONTACT SCHNEIDER ELECTRIC IF OTHER). REFER TO INSTALLATION MANUAL FOR CIRCUIT BREAKER REQUIREMENTS.
 3. THIS SYSTEM SHALL BE INSTALLED AS A SEPARATELY DERIVED SYSTEM IN ACCORDANCE WITH LOCAL AND NATIONAL ELECTRIC CODE ARTICLE 250.30(a)(3). THE GROUNDING ELECTRODE CONDUCTOR IS PROVIDED BY OTHERS.
 4. UPS AND BYPASS SOURCE MUST BE IN PHASE.
 5. CABLE LUGS ARE PROVIDED BY OTHERS.
 6. DC CABLE RATINGS ARE SUPPLIED AS GUIDELINE RECOMMENDATION ONLY AND SHOULD NOT BE CONSIDERED SUBSTITUTED FOR REVIEW. COMPLIANCE WITH NATIONAL OR LOCAL ELECTRICAL CODES. CONSULT YOUR LICENSED ENGINEER OF RECORDS FOR SITE-SPECIFIC "10MS L/R TIME CONSTANT CALCULATIONS (V_DROP 1VMIN)" FOR OVER-CURRENT PROTECTION AND RUNTIMES.
 7. REMOVE PRE-INSTALLED SINGLE FEED KIT BEFORE CABLING.

OVER CURRENT PROTECTION DEVICE FOR UPS 1000KVA WITH INTERNAL POWER MODULE REDUNDANCY (SKU# GVX1250K1000GS)				
LOCATION	BREAKER RATING	RMS SYM	TYPE	ACCESSORIES
UPS INPUT	2000AF/1600AT	100KAIC	ICCB	3A/3B AUX
UPS BYPASS (SSIB)	1600AF/1300AT			
UPS OUTPUT (UOB)	1600AF/1200AT			
BATTERY	TBD	50KAIC	MCCB	24V DC UVR 2A/2B AUX

CURRENT DATA IN AMPS UPS1000KVA WITH INTERNAL POWER MODULE REDUNDANCY (SKU# GVX1250K1000GS)	
M1 INPUT	1456
M2 INPUT	1211
UPS OUTPUT	1203
FULL LOAD BATTERY CURRENT (@ VMIN)	2728

THIS DRAWING AND SPECIFICATIONS HEREIN ARE THE PROPERTY OF SCHNEIDER ELECTRIC AND SHALL NOT BE COPIED, REPRODUCED OR USED IN WHOLE OR IN PART, AS THE BASIS FOR THE MANUFACTURE OR SALE OF ITEMS WITHOUT WRITTEN PERMISSION FROM SCHNEIDER ELECTRIC. THIS DRAWING IS BASED UPON LATEST AVAILABLE INFORMATION AND IS SUBJECT TO CHANGE WITHOUT NOTICE.



TITLE: GALAXY VX
 Input: 480V AC 3PH 60Hz DUAL FEED
 Output: 480V AC 3PH 60Hz 1000kVA
 1 MOD 1000kVA UPS W/INTERNAL REDUNDANCY & CBC
 SYSTEM ONE LINE DIAGRAM
PROJECT: DRAWINGS **SHEET 2 OF 2**

DWG NO: GVX1250K1000GCBC-SD **REV.** 4
DRAWN BY: BALA 14-JUN-18 **ANGLE**
ENGINEER: H N 14-JUN-18 **PROJECTION**
APPROVED BY: A H 14-JUN-18 **N.A.**