

NOTES:

1. INSTALLATION SHALL COMPLY WITH ALL APPLICABLE NATIONAL, STATE AND LOCAL CODES.
2. REFER TO PRODUCT DOCUMENTATION FOR ADDITIONAL DETAILS PRIOR TO INSTALLATION AND SITE PREPARATION WORK.
3. DRAWING DEPICTS POWER SYSTEM CONNECTIONS AND IS NOT REPRESENTATIVE OF PHYSICAL LAYOUT, PLEASE REFER TO MECHANICAL DRAWINGS FOR PHYSICAL LAYOUT.
- △ 4. INPUT AC SOURCE TO BE 480V AC 3PH, 3 WIRE SYSTEM: -3 WIRE+GROUND,
- △ 5. AC CABLING TO BE 600V RATED, 3 WIRE+GROUND, PROVIDED BY OTHERS.
- △ 6. BATTERIES (GVMMBTU) ARE OPTIONAL AND NOT PART OF SKU GVMMODBCW/GVMMODBCN. BATTERY RUNTIME IS THEORETICAL AND CALCULATED BASED ON DATA PROVIDED BY BATTERY MANUFACTURER ASSUMING OPTIMUM ENVIRONMENT AND LOAD CONDITIONS.
- △ 7. BUSBAR LINKS APPLICABLE FOR SINGLE MAINS ONLY. SHOULD BE REMOVED FOR DUAL MAINS SYSTEMS.
8. LUGS ARE NOT PROVIDED. SEE MECHANICAL SUBMITTAL PACKAGE AND INSTALLATION MANUAL FOR ADDITIONAL TERMINATION DETAILS.
- △ 9. A GROUND BONDING JUMPER MUST BE CONNECTED TO THE "E" TERMINAL. GEC IS REQUIRED FOR 3 WIRE INPUT/OUTPUT ONLY.
- △ 10. SYSTEM OUTPUT OCPD AND CABLING SHALL BE PROVIDED BY OTHERS. OCPD AND CABLING SHALL COMPLY WITH LOCAL OR NATIONAL CODE TAP RULES. SEE SHEET-3 FOR DETAILS. AC CABLING TO BE NOT LESS THAN 250V RATED.
- △ 11. BONDING JUMPER PROVIDED BY SCHNEIDER ELECTRIC.
12. OUTPUT GROUND FAULT DETECTION IS NOT PROVIDED FOR UNDERGROUND OR HRG INSTALLATION. CONTACT Schneider Electric FOR ASSISTANCE.

DEVICE RATING				
UPS - INPUT/OUTPUT CABINET				
DEVICE	RATING	TYPE	MAKE	MODEL
UIB/	400 In, 400 Ir, 600V AC	4 POLE MCCB	SCHNEIDER ELECTRIC	LJF46400CU31X
SSIB/ MBB/ UOB	400 In, 350 Ir, 600V AC			
BATTERY CABINET				
BB1/ BB2	250 In, 500V DC	3 POLE MCCB	SCHNEIDER ELECTRIC	JDF36250

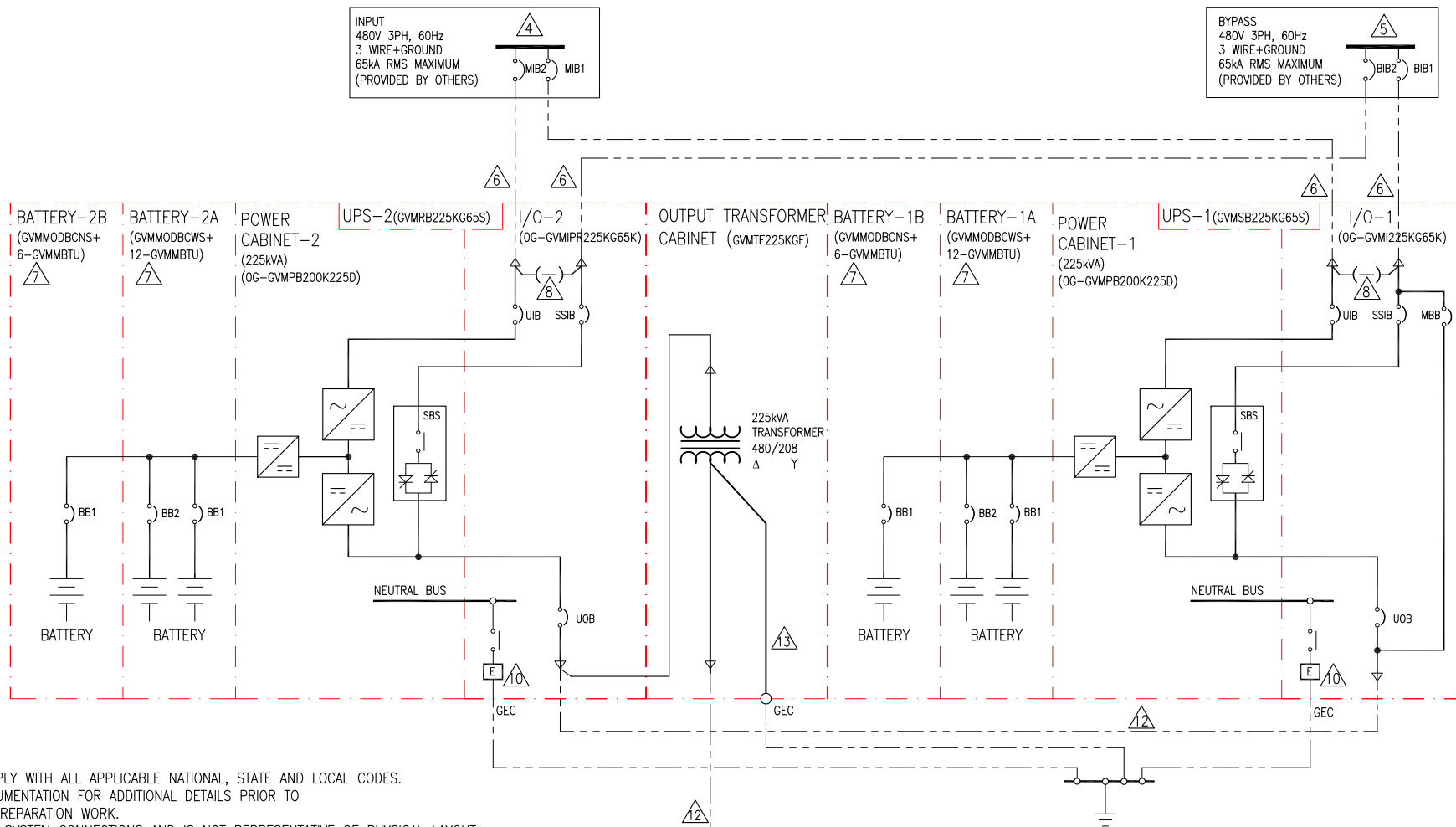
THIS DRAWING AND SPECIFICATIONS HEREIN ARE THE PROPERTY OF SCHNEIDER ELECTRIC AND SHALL NOT BE COPIED, REPRODUCED OR USED IN WHOLE OR IN PART, AS THE BASIS FOR THE MANUFACTURE OR SALE OF ITEMS WITHOUT WRITTEN PERMISSION FROM SCHNEIDER ELECTRIC. THIS DRAWING IS BASED UPON LATEST AVAILABLE INFORMATION AND IS SUBJECT TO CHANGE WITHOUT NOTICE.



TITLE: GALAXY VM
 Input: 480 AC 3PH SINGLE MAINS
 Output: 208 AC 3PH 225kVA
 2 MOD 1+1 UPS WITH MOD BATT CAB & O/P XFMR
 SYSTEM ONE LINE DIAGRAM
PROJECT: DRAWINGS **SHEET 1 OF 3**

DWG NO: GVM225KG65TFMBC10R2-SD
DRAWN BY: BALAMURUGAN 14-AUG-19
ENGINEER: W Z/T A/A H 14-AUG-19
APPROVED BY: L L/J P 14-AUG-19

REV. 2
 ANGLE
 PROJECTION
 N. A.



NOTES:

1. INSTALLATION SHALL COMPLY WITH ALL APPLICABLE NATIONAL, STATE AND LOCAL CODES.
2. REFER TO PRODUCT DOCUMENTATION FOR ADDITIONAL DETAILS PRIOR TO INSTALLATION AND SITE PREPARATION WORK.
3. DRAWING DEPICTS POWER SYSTEM CONNECTIONS AND IS NOT REPRESENTATIVE OF PHYSICAL LAYOUT, PLEASE REFER TO MECHANICAL DRAWINGS FOR PHYSICAL LAYOUT.
- △4. INPUT AC SOURCE TO BE 480V AC 3PH, 3 WIRE+GROUND (CONTACT Schneider Electric IF OTHER). MIB1 AND MIB2 COULD BE IN SEPARATE SOURCES.
- △5. BYPASS AC SOURCE TO BE COMMON 480V AC 3PH, 3 WIRE+GROUND. THE BYPASS CONFIGURATION MUST MATCH OUTPUT CONFIGURATION. BIB1 AND BIB2 MUST BE IN SAME SOURCE.
- △6. AC CABLING TO BE 600V RATED, 3 WIRE+GROUND, PROVIDED BY OTHERS.
- △7. BATTERIES (GVMMBTU) ARE OPTIONAL AND NOT PART OF SKU GVMMODBCN/GVMMODBCN. BATTERY RUNTIME IS THEORETICAL AND CALCULATED BASED ON DATA PROVIDED BY BATTERY MANUFACTURER ASSUMING OPTIMUM ENVIRONMENT AND LOAD CONDITIONS.
- △8. BUSBAR LINKS APPLICABLE FOR SINGLE MAINS ONLY. SHOULD BE REMOVED FOR DUAL MAINS SYSTEMS.
9. LUGS ARE NOT PROVIDED. SEE MECHANICAL SUBMITTAL PACKAGE AND INSTALLATION MANUAL FOR ADDITIONAL TERMINATION DETAILS.
- △10. A GROUND BONDING JUMPER MUST BE CONNECTED TO THE "E" TERMINAL. GEC IS REQUIRED FOR 3 WIRE INPUT/OUTPUT ONLY.
11. CABLE LENGTHS FOR STATIC BYPASS INPUT SHALL BE SAME SUM TOTAL TO ENSURE CORRECT LOAD SHARING IN STATIC BYPASS OPERATION.
- △12. SYSTEM OUTPUT OCPD AND CABLING SHALL BE PROVIDED BY OTHERS. OCPD AND CABLING SHALL COMPLY WITH LOCAL OR NATIONAL CODE TAP RULES. SEE SHEET-3 FOR DETAILS. AC CABLING TO BE NOT LESS THAN 250V RATED.
- △13. BONDING JUMPER PROVIDED BY SCHNEIDER ELECTRIC.
14. OUTPUT GROUND FAULT DETECTION IS NOT PROVIDED FOR UNDERGROUND OR HRG INSTALLATION. CONTACT Schneider Electric FOR ASSISTANCE.

THIS DRAWING AND SPECIFICATIONS HEREIN ARE THE PROPERTY OF SCHNEIDER ELECTRIC AND SHALL NOT BE COPIED, REPRODUCED OR USED IN WHOLE OR IN PART, AS THE BASIS FOR THE MANUFACTURE OR SALE OF ITEMS WITHOUT WRITTEN PERMISSION FROM SCHNEIDER ELECTRIC. THIS DRAWING IS BASED UPON LATEST AVAILABLE INFORMATION AND IS SUBJECT TO CHANGE WITHOUT NOTICE.



TITLE: GALAXY VM
 Input: 480 AC 3PH DUAL MAINS
 Output: 208 AC 3PH 225kVA
 2 MOD 1+1 UPS WITH MOD BATT CAB & 0/P XFMR
 SYSTEM ONE LINE DIAGRAM
PROJECT: DRAWINGS **SHEET 2 OF 3**

DWG NO: GVM225KG65TFMBC10R2-SD
DRAWN BY: BALAMURUGAN 14-AUG-19
ENGINEER: W Z/T A/A H 14-AUG-19
APPROVED BY: L I/J P 14-AUG-19

REV. 2
ANGLE
PROJECTION
N. A.

DEVICE RATING				
UPS - INPUT/OUTPUT CABINET				
DEVICE	RATING	TYPE	MAKE	MODEL
UIB/	400 In, 400 Ir, 600V AC	4 POLE MCCB	SCHNEIDER ELECTRIC	LJF46400CU31X
SSIB/ MBB/ UOB	400 In, 350 Ir, 600V AC			
BATTERY CABINET				
BB1/ BB2	250 In, 500V DC	3 POLE MCCB	SCHNEIDER ELECTRIC	JDF36250

ELECTRICAL DATA (PER UPS) SHEET-DUAL MAINS	
RATED POWER (kVA/kW)	225kVA / 202.5kW
NOMINAL INPUT VOLTAGE (FREQUENCY) / BYPASS VOLTAGE (FREQUENCY)	480V (60Hz) / 480V (60Hz)
NOMINAL UPS OUTPUT VOLTAGE (FREQUENCY)	480V (60Hz)
INPUT WIRING	WIRING : 3 WIRE -3PH+G
BYPASS WIRING	WIRING : 3WIRE-3PH+G
UPS INPUT NOMINAL INPUT CURRENT (A)	255
MAXIMUM INPUT CURRENT (A)	306
INPUT CURRENT LIMITATION (A)	347
UPS BYPASS NOMINAL CURRENT (A)	271
OUTPUT WIRING	WIRING : 3WIRE-3PH+G OR 4WIRE- 3PH+N+G
NOMINAL UPS OUTPUT CURRENT (A)	271
TRANSFORMER TYPE / CLASS / VECTOR GROUP	DRY ISOLATION / H / Dyn11
TRANSFORMER INPUT/OUTPUT VOLTAGE	480V / 208V
TRANSFORMER OUTPUT PF	0.9
TRANSFORMER INRUSH CURRENT	< 2710A ⁵
MAXIMUM SHORT CIRCUIT WITHSTAND (kA) INPUT / BYPASS	lcw =65 / lcw =65
RECOMMENDED UPSTREAM INPUT BREAKERS 80% RATED/100%RATED (A)	600 In, 350 Ir / 400 In, 350 Ir
RECOMMENDED UPSTREAM BYPASS BREAKERS 80% RATED/100%RATED (A)	400 In, 300 Ir / 400 In, 300 Ir
RECOMMENDED INPUT CABLE SIZE	(2) 2/0 AWG
RECOMMENDED BYPASS CABLE SIZE	(1) 300 kcmil

ELECTRICAL DATA (PER UPS) SHEET -SINGLE MAINS	
RATED POWER (kVA/kW)	225kVA / 202.5kW
NOMINAL INPUT VOLTAGE (FREQUENCY)	480V (60Hz)
NOMINAL UPS OUTPUT VOLTAGE (FREQUENCY)	480V (60Hz)
INPUT WIRING	WIRING : 3 WIRE -3PH+G
UPS INPUT NOMINAL INPUT CURRENT (A)	255
MAXIMUM INPUT CURRENT (A)	306
INPUT CURRENT LIMITATION (A)	347
OUTPUT WIRING	WIRING : 3WIRE-3PH+G OR 4WIRE- 3PH+N+G
NOMINAL UPS OUTPUT CURRENT (A)	271
TRANSFORMER TYPE / CLASS / VECTOR GROUP	DRY ISOLATION / H / Dyn11
TRANSFORMER INPUT/OUTPUT VOLTAGE	480V / 208V
TRANSFORMER OUTPUT PF	0.9
TRANSFORMER INRUSH CURRENT	<2710A ⁵
MAXIMUM SHORT CIRCUIT WITHSTAND (kA) INPUT / BYPASS	lcw =65 / lcw =65
RECOMMENDED UPSTREAM INPUT BREAKERS 80% RATED/100%RATED (A)	600 In, 350 Ir / 400 In, 350 Ir
RECOMMENDED INPUT CABLE SIZE	(2) 2/0 AWG

ELECTRICAL DATA OUTPUT XFMR	
XFMR SPECIFICATION	225kVA, 480D:208Y
XFMR OUTPUT CURRENT(A)	597
RECOMMENDED DOWNSTREAM BREAKER 80% , 100% RATED (A)	800 In, 640 Ir / 800 In, 640 Ir
RECOMMENDED DOWNSTREAM FUSE (A)	700
RECOMMENDED XFMR OUTPUT CABLE SIZE	2 x 400kcmil

NOTES:

1. INSTALLATION SHALL COMPLY WITH ALL APPLICABLE NATIONAL, STATE AND LOCAL CODES.
2. CABLE AMPACITY IS BASED ON 75C TERMINATIONS @ 30C AMBIENT WITH 3 CURRENT CARRYING COPPER CONDUCTORS PER NFPA 70-2014 ART. 310.15 TABLE 310.15(B).
3. RECOMMENDED OCPDs' ARE ELECTRONIC TRIP. OCPD AND CABLING ARE PROVIDED BY OTHERS. SEE NOTE-4.
4. FINAL SELECTIONS ARE RESPONSIBILITY OF ENGINEER OF RECORD BASED ON INSTALLED CONDITIONS AND SCC/SELECTIVE CO-ORDINATION/ARC-FLASH ANALYSIS.
5. RECOMMENDED MINIMUM 3000A INSTANTANEOUS TRIP SETTING OF UPSTREAM BREAKER IN CASE UNINTENDED TRIP OCCUR DUE TO INRUSH CURRENT CAUSED BY TRANSFORMER.

THIS DRAWING AND SPECIFICATIONS HEREIN ARE THE PROPERTY OF SCHNEIDER ELECTRIC AND SHALL NOT BE COPIED, REPRODUCED OR USED IN WHOLE OR IN PART, AS THE BASIS FOR THE MANUFACTURE OR SALE OF ITEMS WITHOUT WRITTEN PERMISSION FROM SCHNEIDER ELECTRIC. THIS DRAWING IS BASED UPON LATEST AVAILABLE INFORMATION AND IS SUBJECT TO CHANGE WITHOUT NOTICE.



TITLE: GALAXY VM
Input: 480 AC 3PH SINGLE/DUAL MAINS
Output: 208 AC 3PH 225kVA
2 MOD 1+1 UPS WITH MOD BATT CAB & O/P XFMR
ELECTRICAL DATA SHEET

PROJECT: DRAWINGS SHEET 3 OF 3

DWG NO: GVM225KG65TFMBC10R2-SD REV. 4

DRAWN BY: BALAMURUGAN	14-AUG-19	ANGLE
ENGINEER: W Z/T A/A H	14-AUG-19	PROJECTION
APPROVED BY: L L/J P	14-AUG-19	N. A.