

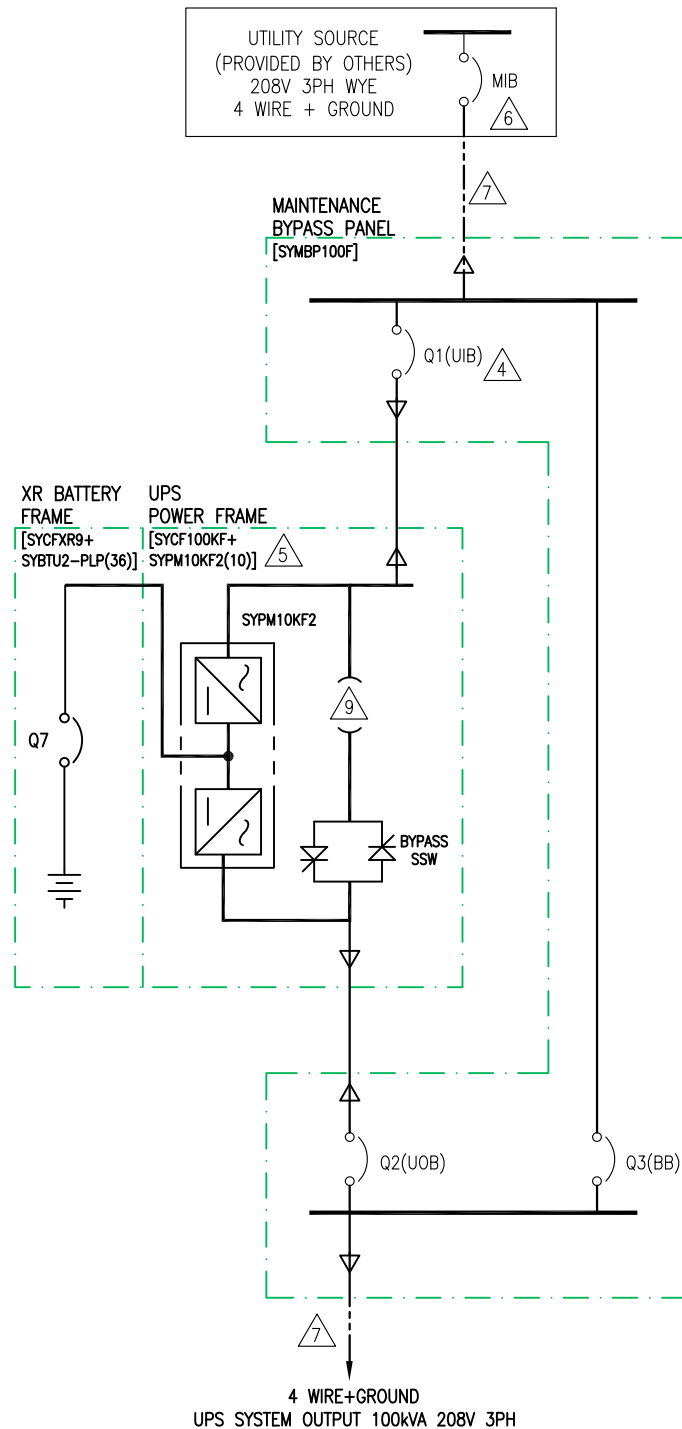
DEVICE RATING					
DEVICE	RATING	TYPE	MAKE	MODEL	ACCESSORIES
Q1	600A, 480/277VAC	SEE NOTE	Schneider Electric	LJF44600WU33X	1A/1B AUX CONTACTS
Q2	400A, 480/277VAC	4P MCCB	Schneider Electric	LJF44400WU33X	1A/1B AUX CONTACTS
Q3	400A, 480/277VAC	4P MCCB	Schneider Electric	LJF44400WU33X	1A/1B AUX CONTACTS
Q7	320A, 500VDC	3P DC BREAKER	ABB	T5N320TWAS4	1-SHUNT TRIP (110-125VAC/DC) 1 - AUX CONTACT (1 FORM C + 1 BA)

**LEGEND:**

----- AC CABLE - PROVIDED BY OTHERS

**NOTES:**

- INSTALLATION SHALL COMPLY WITH ALL APPLICABLE NATIONAL, STATE AND LOCAL CODES.
- REFER TO PRODUCT DOCUMENTATION FOR ADDITIONAL DETAILS PRIOR TO INSTALLATION AND SITE PREPARATION WORK.
- DRAWING DEPICTS POWER SYSTEM CONNECTIONS AND IS NOT REPRESENTATIVE OF PHYSICAL LAYOUT, PLEASE REFER TO MECHANICAL DRAWINGS FOR PHYSICAL LAYOUT.
- THE Q1 BREAKER (MODEL NUMBER LJF44600WU33X) FUNCTIONS AS A 3 POLE DISCONNECT. THE UTILITY SOURCE NEUTRAL (N) IS ALWAYS CONNECTED TO THE UPS AND THE INPUT TO THE 4 POLE Q3. THE PREMISES WIRING FOR INPUT INCLUDING NEUTRAL WILL LAND ON THE TOP OF Q1.
- MAXIMUM AVAILABLE FAULT CURRENT IS 30KAIC.
- AC SOURCE TO BE 208VAC 3PH WYE 4 WIRE+GROUND (CONTACT Schneider Electric IF OTHER). REFER TO SHEET-2 FOR RECOMMENDED OCPD RATINGS.
- AC CABLING TO BE 600V RATED, 4 WIRE+GROUND.
- CABLE LUGS ARE NOT REQUIRED, PREMISES WIRING CAN LAND DIRECTLY ON TOP OF Q1 AND BOTTOM OF Q2, SEE INSTALLATION MANUAL AND MECHANICAL SUBMITTAL DRAWINGS FOR ADDITIONAL DETAILS.
- APPLICABLE FOR SINGLE MAINS CONFIGURATION ONLY.
- THIS DRAWING SHOWS MINIMUM NUMBER OF XR BATTERY FRAMES. MAXIMUM (4) XR BATTERY FRAMES CAN BE BAYED TO UPS.



THIS DRAWING AND SPECIFICATIONS HEREIN ARE THE PROPERTY OF SCHNEIDER ELECTRIC AND SHALL NOT BE COPIED, REPRODUCED OR USED IN WHOLE OR IN PART, AS THE BASIS FOR THE MANUFACTURE OR SALE OF ITEMS WITHOUT WRITTEN PERMISSION FROM SCHNEIDER ELECTRIC. THIS DRAWING IS BASED UPON LATEST AVAILABLE INFORMATION AND IS SUBJECT TO CHANGE WITHOUT NOTICE.



TITLE: SYMMETRA PX 100  
INPUT: 208V 3PH, SINGLE MAINS  
OUTPUT: 208V 100KW  
UPS TOP FEED/BOTTOM FEED WITH MBP  
SYSTEM ONE LINE DIAGRAM

PROJECT: SUBMITTAL DRAWINGS SHEET 1 OF 2

DWG NO: SY100K100FMBP-SD

DRAWN: JAYAPRAKASH 14-DEC-17

ENGINEER: F SYED 14-DEC-17

APPROVED: A WARNER 14-DEC-17

REV. 3

ANGLE

PROJECTION

N.A.

# Symmetra® PX 100K UPS Frame Submittal Data - w/SYMBP100F

UPS Rating				AC Input MIB <sup>1, 2</sup>								AC Output Q2 Q3 <sup>4</sup>				External Battery System <sup>5</sup>				
				Voltage		Current		Recommendations <sup>3, 9</sup>				Currents		Recommendations <sup>3, 9</sup>		Nominal VDC	Battery kW	Current @ Nom. VDC	Recommendations <sup>3, 9</sup>	
UPS Frame Rating	Qty of 10kW Power Modules <sup>8</sup>	kVA	kW	Input <sup>1</sup>	Output <sup>2</sup>	Full Load	Max. <sup>6</sup>	100% OCPD	100% Cable	80% OCPD	80% Cable	NOM.	Max. <sup>7</sup>	100% OCPD Settings <sup>11</sup>	100% Cable					
<b>100kVA/100kW Frame</b>	5	50	50	208	208	166	180	200A	1x 3/0	225A	1x 4/0	139	174	160	1x 1/0	2x 192	54	141	150A	1x 1/0
	6	60	60	208	208	199	216	225A	1x 4/0	250A	1x 250	167	208	170	1x 2/0	2x 192	65	169	175A	1x 2/0
	7	70	70	208	208	232	252	300A	1x 250	300A	1x 350	195	243	201.6	1x 3/0	2x 192	76	197	200A	1x 3/0
	8	80	80	208	208	266	288	300A	1x 350	350A	1x 400	222	278	226.8	1x 4/0	2x 192	86	225	225A	1x 4/0
	9	90	90	208	208	299	324	350A	1x 400	400A	1x 500	250	312	252	1x 250	2x 192	97	253	300A	1x 250
	<b>10<sup>8</sup></b>	<b>100</b>	<b>100</b>	<b>208</b>	<b>208</b>	<b>332</b>	<b>360</b>	<b>400A</b>	<b>1x 500</b>	<b>450A</b>	<b>2x 4/0</b>	<b>278</b>	<b>347</b>	<b>297.6A</b>	<b>1x 300</b>	<b>2x 192</b>	<b>108</b>	<b>282</b>	<b>300A</b>	<b>1x 300</b>

[APC Symmetra® PX](#)

Notes. 208Y/120V 3 CB Maintenance Bypass Switch: SYMBP100F

1. Mains Input source must be 208V Wye solidly grounded. Contact Schneider Electric if other.
2. Single feed 4-wire+G. See respective one-line drawing on sheet-1 for further clarification.
3. Recommended cables are THHN AWG/kcmil minimum requirement sized for 30°C environment, 75°C terminations, PFC load, and three (3) current carrying conductors per circuit. All cabling must comply with installation site conditions and any applicable Local or National Codes.
4. Output is either 208V Wye 3-wire + Ground or 4-wire + Ground.
5. Contact Schneider Electric for assistance with all external battery designs. Maximum allowed DC cabling voltage drop is 1 VDC.
6. Electronic Input Current Limit
7. 125% Overload for 10 minutes.
8. For maximum scalability or future expansion it is recommended that the UPS frames be installed at their full ratings - see bold highlighted data
9. All external OCPD's and cabling are by others. Input & output cable terminations permit a maximum of 2x 500kcmil.
10. OCPD = Over Current Protective Device
11. Refer to Installation Manual for correct settings of Q2 and Q3.
12. Final selections are responsibility of Engineer of record based on installed conditions and SCC/ Selective co-ordination/ arc-flash analysis.

THIS DRAWING AND SPECIFICATIONS HEREIN ARE THE PROPERTY OF SCHNEIDER ELECTRIC AND SHALL NOT BE COPIED, REPRODUCED OR USED IN WHOLE OR IN PART, AS THE BASIS FOR THE MANUFACTURE OR SALE OF ITEMS WITHOUT WRITTEN PERMISSION FROM SCHNEIDER ELECTRIC. THIS DRAWING IS BASED UPON LATEST AVAILABLE INFORMATION AND IS SUBJECT TO CHANGE WITHOUT NOTICE.



TITLE: SYMMETRA PX 100  
 INPUT: 208V 3PH, SINGLE MAINS  
 OUTPUT: 208V 100kW  
 UPS TOP FEED/BOTTOM FEED WITH MBP  
 SITE PLANNING DATA

PROJECT: SUBMITTAL DRAWINGS SHEET 2 OF 2

DWG NO: SY100K100FMBP-SD

DRAWN: JAYAPRAKASH	14-DEC-17	ANGLE PROJECTION
ENGINEER: F.SYED	14-DEC-17	N.A
APPROVED: A WARNER	14-DEC-17	

REV. 2