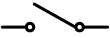



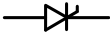
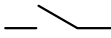




## MGE Galaxy 3500 Wide (10 - 30) kVA 1 Module Drawing Guide

Sheet No.	Component /Detail	Description
1	Draw ing Guide	MGE Galaxy 3500 10-30kVA, 1 MOD Wide draw ing guide
2-4	Solution	MGE Galaxy 3500 Wider Tow er 10-30kVA 1 MOD.
5-6	UPS	MGE Galaxy 3500 10-30kVA 208V, Wider Tow er
7-8	System One Line Diagram	MGE Galaxy 3500 10-30kVA 208V Single Main,1MOD System One Line Diagram
9	System Wiring Diagram	MGE Galaxy 3500 10-30kVA 208V 1MOD System Control Wiring Diagram

LEGEND			
SYMBOL	DESCRIPTION	SYMBOL	DESCRIPTION
	SWITCH DISCONNECT		INVERTER
	CIRCUIT BREAKER		CONVERTER
	STATIC SWITCH		NORMALLY OPEN CONTACT
	BATTERY MODULE		NORMALLY CLOSED CONTACT

THIS DRAWING AND SPECIFICATIONS HEREIN ARE THE PROPERTY OF SCHNEIDER ELECTRIC AND SHALL NOT BE COPIED, REPRODUCED OR USED IN WHOLE OR IN PART, AS THE BASIS FOR THE MANUFACTURE OR SALE OF ITEMS WITHOUT WRITTEN PERMISSION FROM SCHNEIDER ELECTRIC. THIS DRAWING IS BASED UPON LATEST AVAILABLE INFORMATION AND IS SUBJECT TO CHANGE WITHOUT NOTICE.



TITLE: MGE GALAXY 3500  
Input:208/220V AC 3PH SINGLE/DUAL MAINS  
Output:208/220V AC 3PH  
10-30kVA WIDER UPS 1 MOD  
DRAWING GUIDE

DWG NO: C35T10K30FW-1MOD

REV. 0

DRAWN BY: SHAHID ALI 19-OCT-11

ANGLE

ENGINEER: T.MULLER 25-OCT-11

PROJECTION

PROJECT: DRAWINGS SHEET 1 OF 9

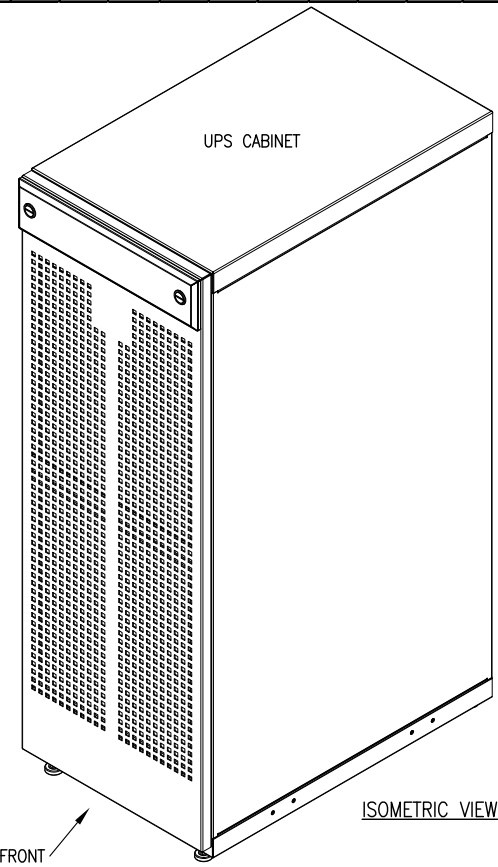
APPROVED BY: B.SHERIDAN 25-OCT-11

N/A



### Weight and Runtime details for 1 module UPS (10-30kVA)

Battery position	No. of bat shelves	G35T10KF1B4S		G35T10KF2B4S		G35T10KF3B4S		G35T10KF4B4S		G35T15KF2B4S		G35T15KF3B4S		G35T15KF4B4S		G35T20KF2B4S		G35T20KF3B4S		G35T20KF4B4S		G35T30KF3B4S		G35T30KF4B4S			
		Net Weight of Solution	Runtime in Min	Net Weight of Solution	Runtime in Min	Net Weight of Solution	Runtime in Min	Net Weight of Solution	Runtime in Min	Net Weight of Solution	Runtime in Min	Net Weight of Solution	Runtime in Min	Net Weight of Solution	Runtime in Min	Net Weight of Solution	Runtime in Min	Net Weight of Solution	Runtime in Min	Net Weight of Solution	Runtime in Min	Net Weight of Solution	Runtime in Min	Net Weight of Solution	Runtime in Min		
		in lbs	in kg	in lbs	in kg	in lbs	in kg	in lbs	in kg	in lbs	in kg	in lbs	in kg	in lbs	in kg	in lbs	in kg	in lbs	in kg	in lbs	in kg	in lbs	in kg	in lbs	in kg		
UPS 1	2	711	323	6	n.a	n.a	n.a	n.a	n.a	n.a	n.a	n.a	n.a	n.a	n.a	n.a	n.a	n.a	n.a	n.a	n.a	n.a	n.a	n.a	n.a		
UPS 2	3	914	415	18	914	415	18	n.a	n.a	n.a	n.a	n.a	n.a	n.a	n.a	n.a	n.a	n.a	n.a	n.a	n.a	n.a	n.a	n.a	n.a		
UPS 3	4	1117	507	32	1117	507	32	1117	507	32	n.a	n.a	n.a	1117	507	18	1117	507	18	n.a	n.a	n.a	1183	537	12	1183	537
UPS 4		1319	599	47	1319	599	47	1319	599	47	1319	599	47	1319	599	27	1319	599	27	1319	599	27	1385	629	18	1385	629



**NOTES:**

1. INSTALLATION SHALL COMPLY WITH ALL APPLICABLE NATIONAL, STATE AND LOCAL CODES.
2. REFER TO PRODUCT MANUALS FOR ADDITIONAL DETAILS PRIOR TO INSTALLATION AND SITE PREPARATION WORK.
3. CABLE ENTRY IS FROM REAR SIDE OF THE UNIT OR THROUGH CONDUIT BOX. PLEASE REFER TO UPS DRAWING WITH CONDUIT BOX (PROVIDED ON WEB)
4. FRONT AND REAR SERVICE ACCESS IS REQUIRED.
5. FOR NET WEIGHT OF UNIT, CONFIGURATION AND RUNTIME DETAILS REFER TO TABLE ABOVE
6. FOR OPERATING TEMPERATURE PLEASE REFER TO SHEET-3.
7. BATTERY RUN TIMES ARE THEORETICAL AND CALCULATED BASED ON DATA PROVIDED BY BATTERY MANUFACTURER ASSUMING OPTIMUM ENVIRONMENT AND LOAD CONDITIONS.

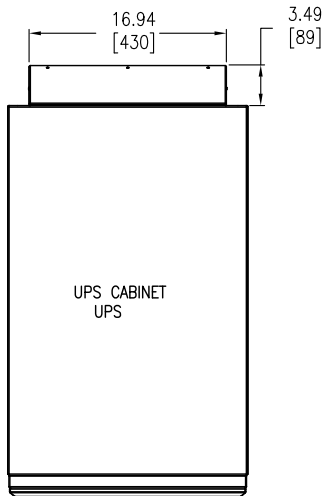
THIS DRAWING AND SPECIFICATIONS HEREIN ARE THE PROPERTY OF SCHNEIDER ELECTRIC AND SHALL NOT BE COPIED, REPRODUCED OR USED IN WHOLE OR IN PART, AS THE BASIS FOR THE MANUFACTURE OR SALE OF ITEMS WITHOUT WRITTEN PERMISSION FROM SCHNEIDER ELECTRIC. THIS DRAWING IS BASED UPON LATEST AVAILABLE INFORMATION AND IS SUBJECT TO CHANGE WITHOUT NOTICE.



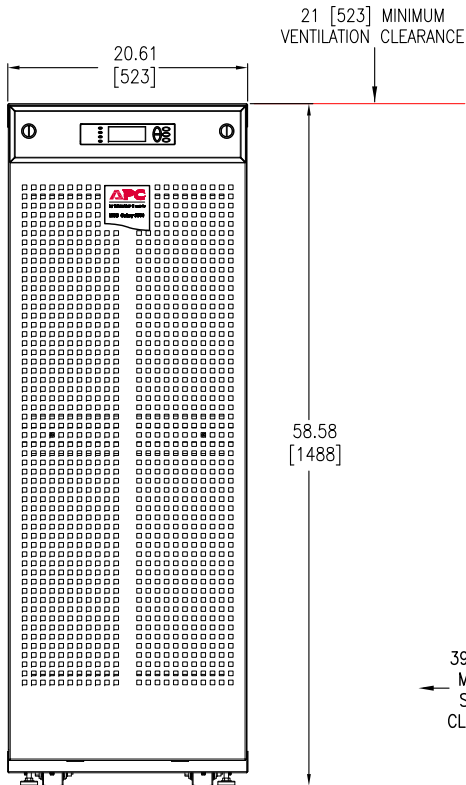
TITLE: MGE GALAXY 3500  
 Input:208/220V AC 3PH SINGLE/DUAL MAINS  
 Output:208/220V AC 3PH  
 10-30kVA WIDER UPS 1 MOD  
 SOLUTION ISOMETRIC  
 PROJECT: DRAWINGS | SHEET 2 OF 9

DWG NO: G35T10K30FW-1MOD  
 DRAWN BY: SHAHID ALI | 19-OCT-11  
 ENGINEER: T.MULLER | 25-OCT-11  
 APPROVED BY: B.SHERIDAN | 25-OCT-11

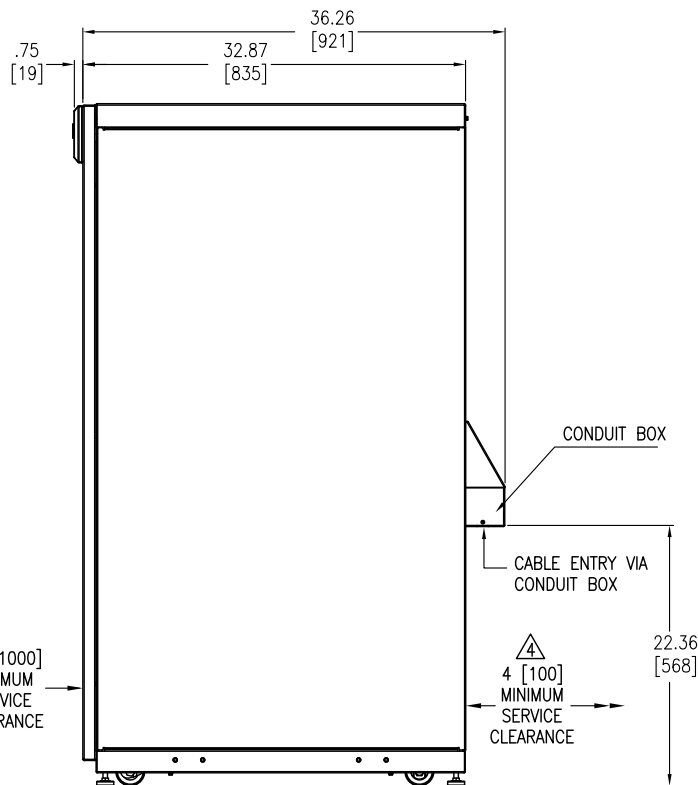
REV: 0  
 THIRD ANGLE PROJECTION



TOP VIEW



FRONT VIEW



SIDE VIEW

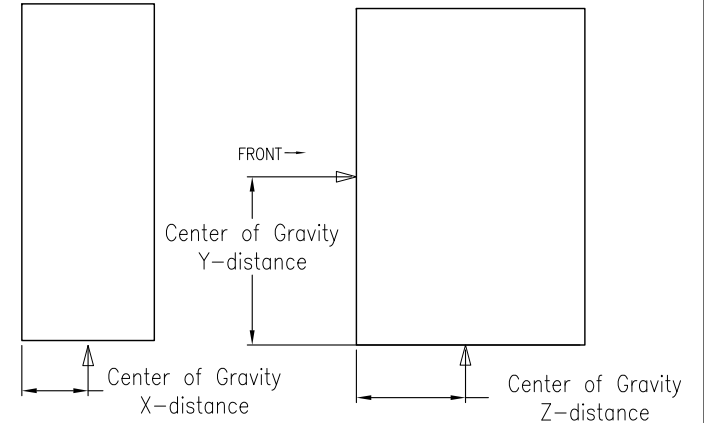
**NOTES:**

1. INSTALLATION SHALL COMPLY WITH ALL APPLICABLE NATIONAL, STATE AND LOCAL CODES.
2. REFER TO PRODUCT MANUALS FOR ADDITIONAL DETAILS PRIOR TO INSTALLATION AND SITE PREPARATION WORK..
3. ALL DIMENSIONS ARE IN INCHES (MILLIMETERS). UNLESS OTHERWISE SPECIFIED.
- △ 4. FRONT AND REAR SERVICE CLEARANCE AND TOP COOLING CLEARANCE IS REQUIRED. FOR REAR ACCESS USE FLEXIBLE CONDUIT WITH SUFFICIENT LENGTH TO ALLOW UNIT TO BE MOVED OUT FOR SERVICE
5. UPS COLOR: GREY METALLIC.
6. ENCLOSURE PROTECTION IP51
7. UPS OPERATING TEMPERATURE: 32°F [0°C] MIN. TO 104°F [40°C] MAX. RECOMMENDED OPERATING RANGE: 59°F [15°C] TO 77°F [25°C].
8. CABLE ENTRY IS FROM TOP, BOTTOM OR THROUGH REAR CONDUIT BOX.
- △ 9. THIS INFORMATION PROVIDES APPROXIMATE CENTER OF GRAVITY CALCULATION.

CENTER OF GRAVITY DETAILS 9

Rating	SKU Number	COG Details in Inches [mm]		
		X-Distance	Y-Distance	Z-Distance
10kVA	G35T10KF1B4S	9.72 [247]	25.20 [640]	15.79 [401]
	G35T10KF2B4S	9.84 [250]	22.99 [584]	15.71 [399]
	G35T10KF3B4S	9.92 [252]	22.76 [578]	15.63 [397]
15kVA	G35T10KF4B4S	9.96 [253]	23.58 [599]	15.63 [397]
	G35T15KF2B4S	9.84 [250]	22.99 [584]	15.71 [399]
	G35T15KF3B4S	9.92 [252]	22.76 [578]	15.63 [397]
20kVA	G35T15KF4B4S	9.96 [253]	23.58 [599]	15.63 [397]
	G35T20KF2B4S	9.84 [250]	22.99 [584]	15.71 [399]
	G35T20KF3B4S	9.92 [252]	22.76 [578]	15.63 [397]
30kVA	G35T20KF4B4S	9.96 [253]	23.58 [599]	15.63 [397]
	G35T30KF3B4S	10.16 [258]	23.90 [607]	15.51 [394]
	G35T30KF4B4S	10.16 [258]	24.49 [622]	15.47 [393]

UPS CABINET



THIS DRAWING AND SPECIFICATIONS HEREIN ARE THE PROPERTY OF SCHNEIDER ELECTRIC AND SHALL NOT BE COPIED, REPRODUCED OR USED IN WHOLE OR IN PART, AS THE BASIS FOR THE MANUFACTURE OR SALE OF ITEMS WITHOUT WRITTEN PERMISSION FROM SCHNEIDER ELECTRIC. THIS DRAWING IS BASED UPON LATEST AVAILABLE INFORMATION AND IS SUBJECT TO CHANGE WITHOUT NOTICE.



TITLE: MGE GALAXY 3500  
 Input:208/220V AC 3PH SINGLE/DUAL MAINS  
 Output:208/220V AC 3PH  
 10-30kVA WIDER UPS 1 MOD  
 SOLUTION-GENERAL ARRANGEMENTS

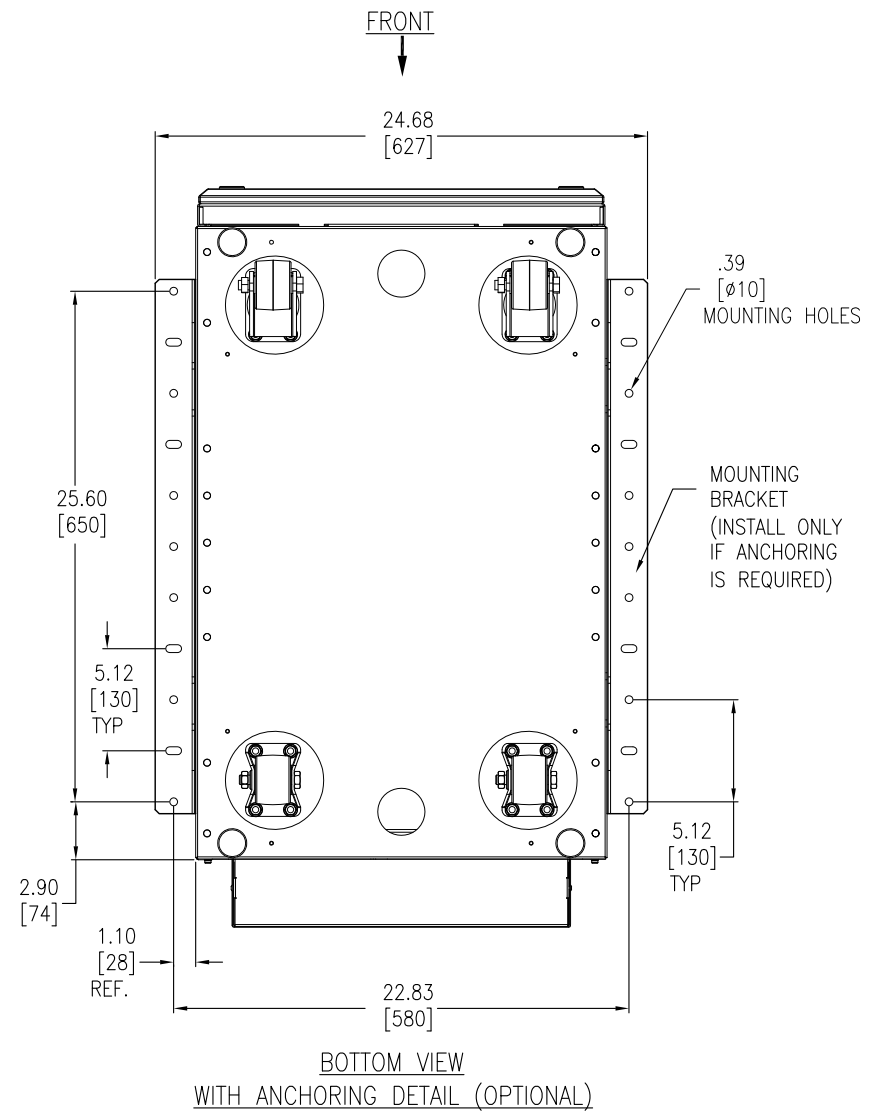
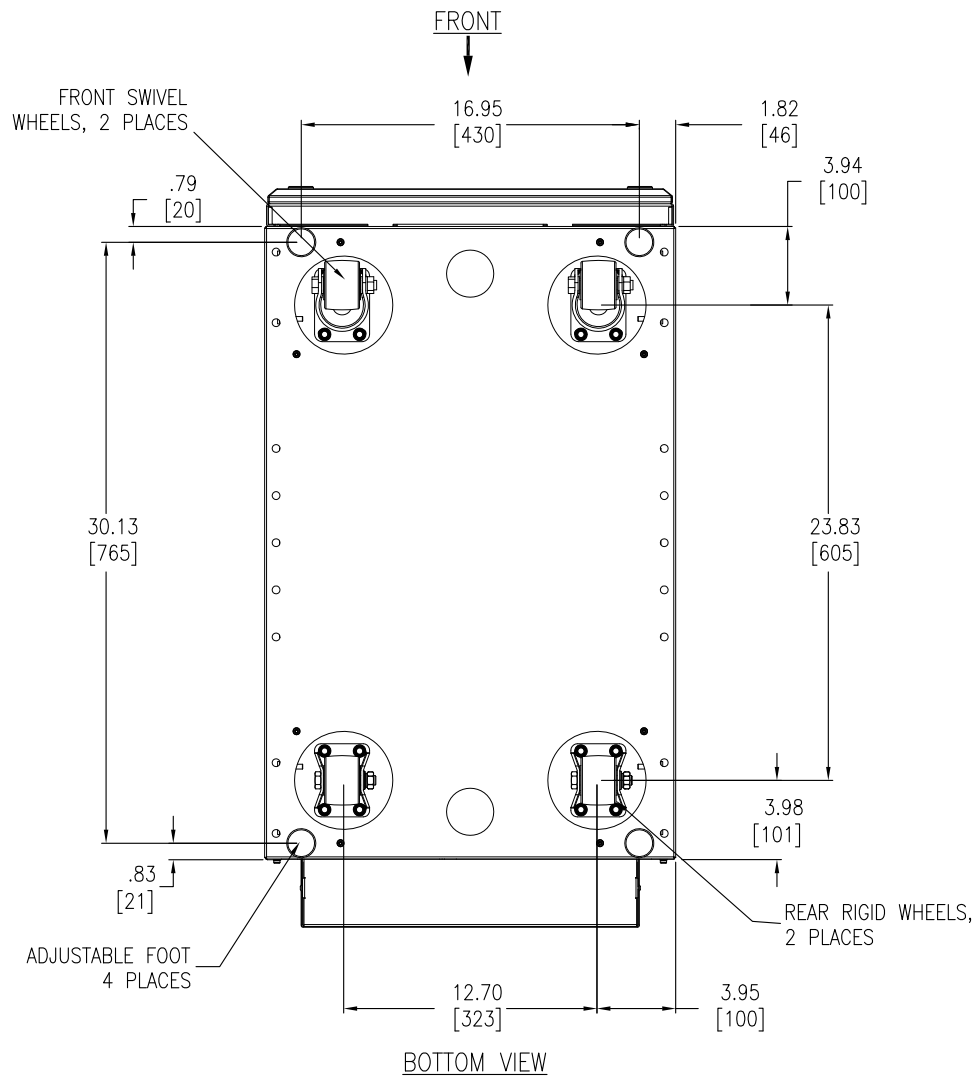
DWG NO: G35T10K30FW-1MOD

DRAWN BY: SHAHID ALI 19-OCT-11  
 ENGINEER: T.MULLER 25-OCT-11

PROJECT: DRAWINGS SHEET 3 OF 9

APPROVED BY: B.SHERIDAN 25-OCT-11

REV: 0  
 THIRD ANGLE PROJECTION



**NOTES:**

1. INSTALLATION SHALL COMPLY WITH ALL APPLICABLE NATIONAL, STATE AND LOCAL CODES.
2. REFER TO PRODUCT MANUALS FOR ADDITIONAL DETAILS PRIOR TO INSTALLATION AND SITE PREPARATION WORK..
3. ALL DIMENSIONS ARE IN INCHES [MILLIMETERS]. UNLESS OTHERWISE SPECIFIED.

THIS DRAWING AND SPECIFICATIONS HEREIN ARE THE PROPERTY OF SCHNEIDER ELECTRIC AND SHALL NOT BE COPIED, REPRODUCED OR USED IN WHOLE OR IN PART, AS THE BASIS FOR THE MANUFACTURE OR SALE OF ITEMS WITHOUT WRITTEN PERMISSION FROM SCHNEIDER ELECTRIC. THIS DRAWING IS BASED UPON LATEST AVAILABLE INFORMATION AND IS SUBJECT TO CHANGE WITHOUT NOTICE.

**Schneider Electric**

TITLE: MGE GALAXY 3500  
Input:208/220V AC 3PH SINGLE/DUAL MAINS  
Output:208/220V AC 3PH  
10-30kVA WIDER UPS 1 MOD  
SOLUTION-BOTTOM ANCHORING

DWG NO: C35T10K30FW-1MOD

REV: 0

DRAWN BY: SHAHID ALI 19-OCT-11

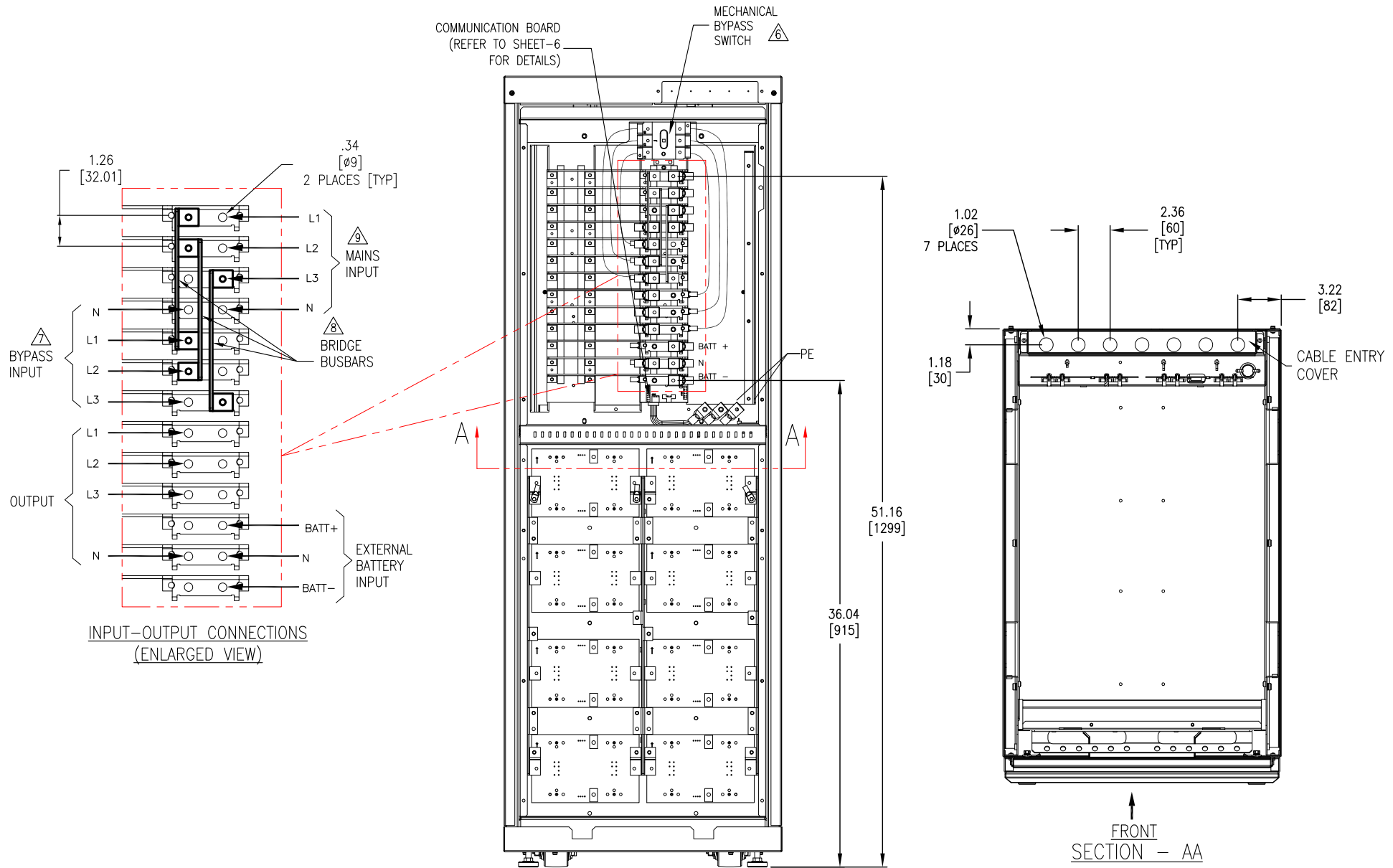
THIRD ANGLE

ENGINEER: T.MULLER 25-OCT-11

PROJECTION

PROJECT: DRAWINGS SHEET 4 OF 9

APPROVED BY: B.SHERIDAN 25-OCT-11



**NOTES**

1. INSTALLATION SHALL COMPLY WITH ALL APPLICABLE NATIONAL, STATE AND LOCAL CODES.
2. REFER TO PRODUCT MANUALS FOR ADDITIONAL DETAILS PRIOR TO INSTALLATION AND SITE PREPARATION WORK.
3. UNLESS OTHERWISE SPECIFIED, ALL DIMENSIONS ARE IN INCHES [MILLIMETERS].
4. SOME STRUCTURAL DETAILS HAVE BEEN OMITTED FOR THE PURPOSE OF CLARITY.
5. MGE GALAXY 3500 UPS IS DESIGNED FOR SINGLE AND DUAL MAINS. SINGLE MAINS INSTALLATION IS A DEFAULT.
- △ 6. THE MECHANICAL BYPASS SWITCH MUST BE REMOVED WHEN THE UPS IS TO RUN IN PARALLEL.
- △ 7. FOR DUAL MAINS ONLY.
- △ 8. TO BE REMOVED FOR DUAL MAINS INSTALLATION.
- △ 9. MAINS INPUT SHOULD FEED NEUTRAL FOR SINGLE MAINS CONFIGURATION ONLY. FOR DUAL MAINS CONFIGURATION MAINS INPUT SHOULD NOT FEED THE NEUTRAL.

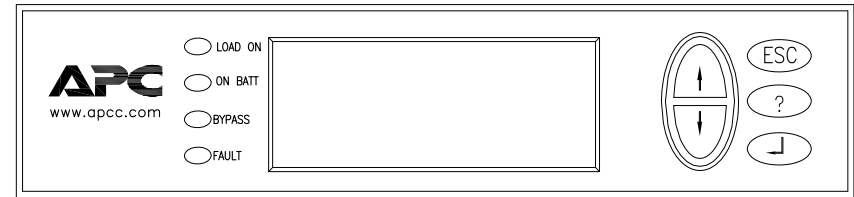
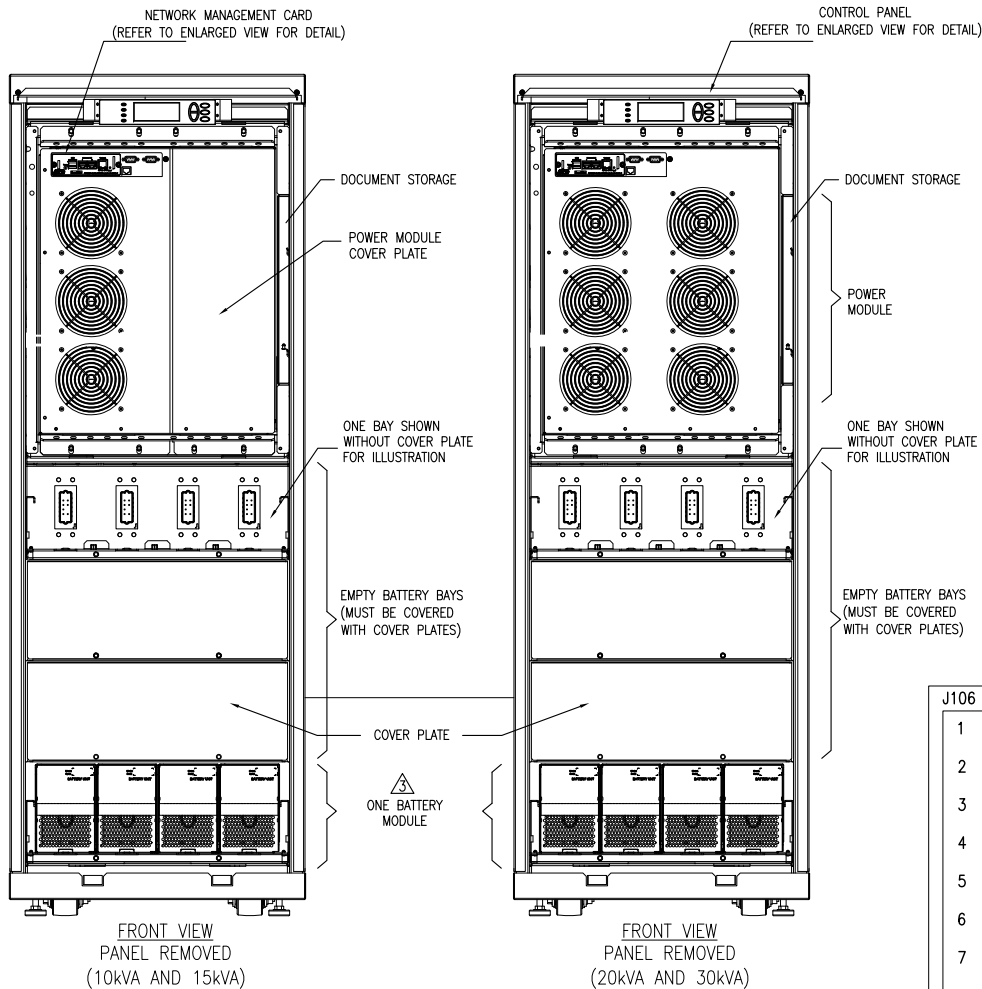
THIS DRAWING AND SPECIFICATIONS HEREIN ARE THE PROPERTY OF SCHNEIDER ELECTRIC AND SHALL NOT BE COPIED, REPRODUCED OR USED IN WHOLE OR IN PART, AS THE BASIS FOR THE MANUFACTURE OR SALE OF ITEMS WITHOUT WRITTEN PERMISSION FROM SCHNEIDER ELECTRIC. THIS DRAWING IS BASED UPON LATEST AVAILABLE INFORMATION AND IS SUBJECT TO CHANGE WITHOUT NOTICE.



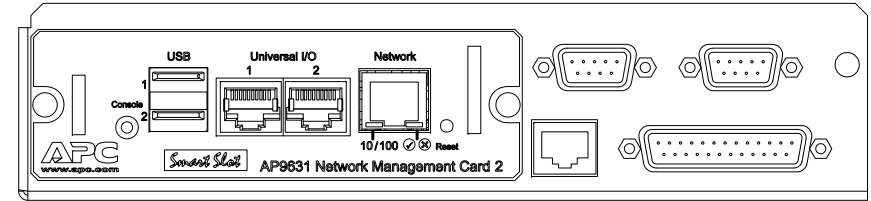
TITLE: MGE GALAXY 3500  
 Input:208/220V AC 3PH SINGLE/DUAL MAINS  
 Output:208/220V AC 3PH  
 10-30kVA WIDER UPS 1 MOD  
 UPS INTERNAL VIEW

DWG NO: G35T10K30FW-1MOD  
 DRAWN BY: JAYAPRAKASH 30-NOV-15  
 ENGINEER: T.MULLER 30-NOV-15  
 APPROVED BY: M.MAISSY 30-NOV-15

REV. 1  
 THIRD ANGLE PROJECTION

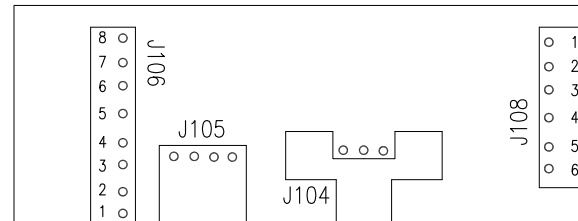
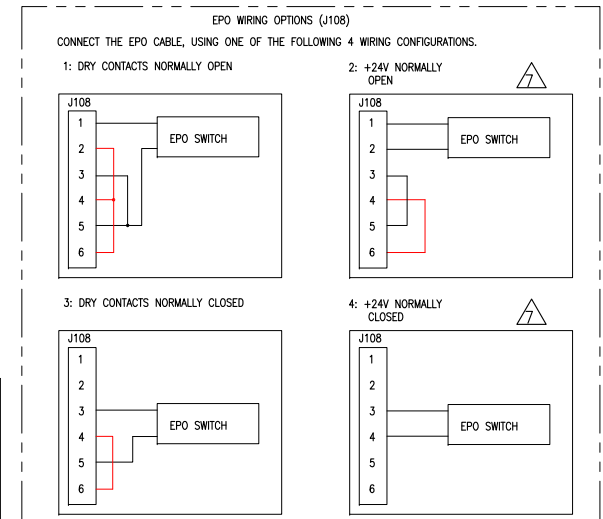
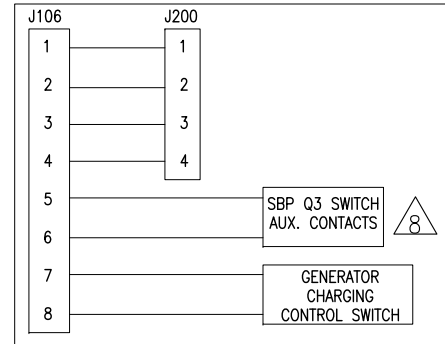


CONTROL PANEL (ENLARGED VIEW)



NETWORK MANAGEMENT CARD (ENLARGED VIEW)

APC SBP, AND GENERATOR CONTROL WIRING (J106)



COMMUNICATION BOARD

NOTES:

- INSTALLATION SHALL COMPLY WITH ALL APPLICABLE NATIONAL, STATE AND LOCAL CODES.
- REFER TO PRODUCT MANUALS FOR ADDITIONAL DETAILS PRIOR TO INSTALLATION AND SITE PREPARATION WORK.
- THIS DRAWING REPRESENTS THE SKU WITH ONE BATTERY MODULE. REFER TO SHEET-2 FOR DETAILS ABOUT ADDITIONAL BATTERY MODULES.
- SOME STRUCTURAL DETAILS HAVE BEEN OMITTED FOR THE PURPOSE OF CLARITY.
- FOR COMMUNICATION CABLES USE ONLY 28-16AWG COPPER WIRE RATED MINIMUM 250V.
- UPS, EPO TERMINALS MUST BE CONNECTED TO EITHER DRY CONTACT OR 24V DC EPO SWITCH
- THE EXTERNAL EPO +24V DC, 1500MA CIRCUIT CAN BE SUPPLIED THROUGH OTHER VENDORS.
- FOR ONE MODULE CONFIGURATION ONLY.

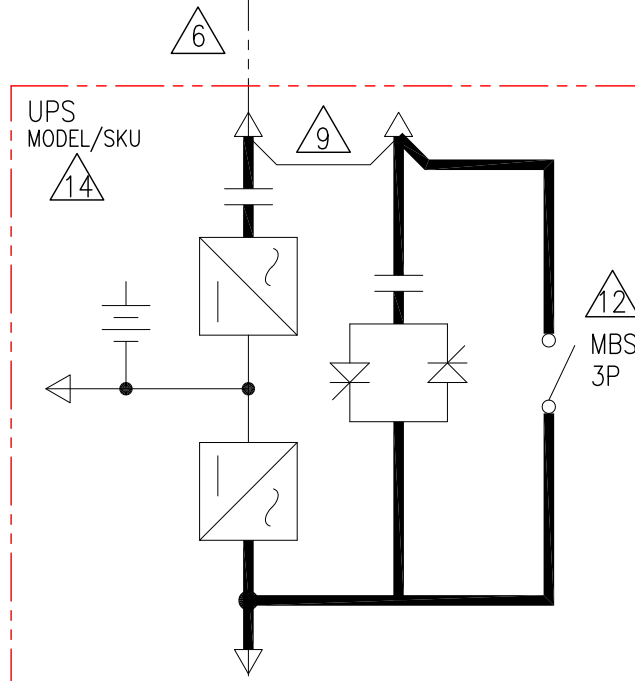
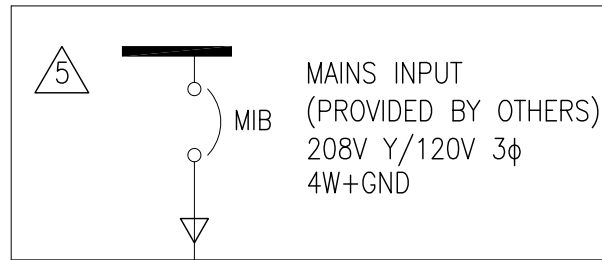
THIS DRAWING AND SPECIFICATIONS HEREIN ARE THE PROPERTY OF SCHNEIDER ELECTRIC AND SHALL NOT BE COPIED, REPRODUCED OR USED IN WHOLE OR IN PART, AS THE BASIS FOR THE MANUFACTURE OR SALE OF ITEMS WITHOUT WRITTEN PERMISSION FROM SCHNEIDER ELECTRIC. THIS DRAWING IS BASED UPON LATEST AVAILABLE INFORMATION AND IS SUBJECT TO CHANGE WITHOUT NOTICE.



TITLE: MGE GALAXY 3500  
 Input:208/220V AC 3PH SINGLE/DUAL MAINS  
 Output:208/220V AC 3PH  
 10-30kVA WIDER UPS 1 MOD  
 UPS-CONTROL PANEL & NMC  
 PROJECT: DRAWINGS SHEET 6 OF 9

DWG NO: C35T10K30FW-1MOD  
 DRAWN BY: SHAHID ALI 19-OCT-11  
 ENGINEER: T.MULLER 25-OCT-11  
 APPROVED BY: B.SHERIDAN 25-OCT-11

REV: 0  
 THIRD ANGLE PROJECTION



UPS SYSTEM OUTPUT  
208V 3PH - 4 WIRE + GROUND

**LEGEND:**  
 - - - - - AC CABLE - PROVIDED BY OTHERS  
 \_\_\_\_\_ AC BUS

DEVICE	RATED SHORT CIRCUIT CURRENT
UPS	30kAIC SYMMETRICAL

- NOTES:**
- INSTALLATION SHALL COMPLY WITH ALL APPLICABLE NATIONAL, STATE AND LOCAL CODES.
  - REFER TO PRODUCT MANUALS FOR ADDITIONAL DETAILS PRIOR TO INSTALLATION AND SITE PREPARATION WORK.
  - DRAWING DEPICTS POWER SYSTEM CONNECTIONS AND IS NOT REPRESENTATIVE OF PHYSICAL LAYOUT, REFER TO MECHANICAL DRAWINGS FOR PHYSICAL LAYOUT.
  - ALL AC BREAKERS ARE 80% CONTINUOUS DUTY RATED WITH 2A/2B AUX CONTACTS FOR APC CONTROL AND COORDINATED WITH REQUIRED SYSTEM SETTINGS AS DETAILED IN PRODUCT DOCUMENTATION. ADDITIONAL 2A/2B AUX CONTACTS TO BE WIRED TO TERMINAL STRIP FOR CUSTOMER USE. BREAKER SIZING IS BASED ON NOMINAL MAINS VOLTAGE.
- △ 5. AC SOURCE TO BE 208VAC, 4W, WYE CONNECTED, 3φ (CONTACT Schneider Electric IF OTHER)
- △ 6. AC CABLING TO BE 600V RATED, 3 PHASE, 4W+GND.
7. DC SOURCE TO BE 384VDC WITH CENTER TAP, 3W+GND.
8. CABLE LUGS ARE PROVIDED BY OTHERS.
- △ 9. REMOVABLE BUS LINK. TO BE REMOVED FOR DUAL MAINS.
10. UPS INPUT AND OUTPUT CABLES SHOULD BE SEGREGATED.
11. POWER WIRING AND CONTROL WIRING SHOULD BE SEGREGATED.
- △ 12. TO BE REMOVED FOR PARALLEL INSTALLATION.
13. SINGLE MODULE, FOR LINEUP CONFIGURATION ONLY.
- △ 14. APPLICABLE SKU NUMBER: PLEASER REFER SHEET-2

THIS DRAWING AND SPECIFICATIONS HEREIN ARE THE PROPERTY OF SCHNEIDER ELECTRIC AND SHALL NOT BE COPIED, REPRODUCED OR USED IN WHOLE OR IN PART, AS THE BASIS FOR THE MANUFACTURE OR SALE OF ITEMS WITHOUT WRITTEN PERMISSION FROM SCHNEIDER ELECTRIC. THIS DRAWING IS BASED UPON LATEST AVAILABLE INFORMATION AND IS SUBJECT TO CHANGE WITHOUT NOTICE.



TITLE: MGE GALAXY 3500  
 Input:208/220V AC 3PH SINGLE/DUAL MAINS  
 Output:208/220V AC 3PH  
 10-30kVA WIDER UPS 1 MOD  
 SINGLE MAIN-SYSTEM ONE LINE DIAGRAM

PROJECT: DRAWINGS | SHEET 7 OF 9

DWG NO:	C35T10K30FW-1MOD	REV:	0
DRAWN BY:	SHAHID ALI	19-OCT-11	ANGLE
ENGINEER:	T.MULLER	25-OCT-11	PROJECTION
APPROVED BY:	B.SHERIDAN	25-OCT-11	N/A

**Galaxy 3500® 10K to 30K UPS Frame (1 Module) Site Planning Data**

Battery - Nominal Voltage : +/-192V DC  
 Input Voltage : 208V AC, Output Voltage : 208V AC

UPS Rating	SKU Number	System Mains Input		System Bypass Input	System Output		Battery Current(A) (in UPS Cabinet)	Recommended Over current Protection Device Ratings			UPS Mechanical Data				
		Nominal Current(A)	Maximum Current(A)	Nominal Current(A)	System output Power	Nominal Current(A)		UPS Mains Input (A)	UPS Bypass Input (A)	UPS System Output (A)	Typical Dimensions D in inches [mm] see note 15	H x W x Weight in lbs [kg] see Note 15	Floor Loading data in Lbs/ft <sup>2</sup> [kg/m <sup>2</sup> ]	Heat Loss BTU/hr See Note 23	
10KVA/8KW	G35T10KF1B4S	24.3	26.7	27.8	10KVA/8KW	27.8	27.5	35	35	35	58.7x20.6x33 [1491x532x838]	711 [323]	151 [737]	1938	
	G35T10KF2B4S										58.7x20.6x33 [1491x532x838]	913 [415]	193 [947]		
	G35T10KF3B4S										58.7x20.6x33 [1491x532x838]	1115 [507]	236 [1156]		
	G35T10KF4B4S										58.7x20.6x33 [1491x532x838]	1318 [600]	279 [1367]		
15KVA/12KW	G35T15KF2B4S	36.5	40.2	41.6	15KVA/12KW	41.6	41.2	60	60	60	58.7x20.6x33 [1491x532x838]	913 [415]	193 [947]	2989	
	G35T15KF3B4S										58.7x20.6x33 [1491x532x838]	1115 [507]	236 [1156]		
	G35T15KF4B4S										58.7x20.6x33 [1491x532x838]	1318 [600]	279 [1367]		
20KVA/16KW	G35T20KF2B4S	48.5	53.4	55.5	20KVA/16KW	55.5	55	80	80	80	58.7x20.6x33 [1491x532x838]	979 [445]	207 [1015]	4238	
	G35T20KF3B4S										58.7x20.6x33 [1491x532x838]	1181 [537]	250 [1225]		
	G35T20KF4B4S										58.7x20.6x33 [1491x532x838]	1384 [629]	293 [1435]		
30KVA/24KW	G35T30KF3B4S	73	80.3	83.3	30KVA/24KW	83.3	82.5	125	125	125	58.7x20.6x33 [1491x532x838]	1181 [537]	250 [1225]	5896	
	G35T30KF4B4S										58.7x20.6x33 [1491x532x838]	1384 [629]	293 [1435]		

**Notes.**

- Input current based on full rated output load..
  - Maximum (Max.) current is for duration of battery recharge.
  - Input and bypass cables must be run in separate conduits from output cables. Not more than three conductors in raceway assumed; ambient temperature of 30°C (86°F) assumed.
  - If initial load is less than UPS' rated output, it is recommended that AC input, battery, and AC output wiring and over current protection be sized to UPS' full load rating to accommodate possible future expansion.
  - Nominal battery voltage is shown at 2.0 volts/cell per NEC 480-2.
  - DC cables should be sized for a total maximum of less than 1% of CB rating.
  - OCPD = Over current Protection Device. Recommended represents 125% of nominal full load current (continuous) per NEC 215.
  - Minimum-sized grounding conductors to be per NEC 250-122. Parity-sized ground conductors are recommended. Neutral conductors to be sized for full capacity per NEC 310-15(b)(4).
  - Wiring requirements:
    - AC Input/Output: 3Ø, 3 or 4 wire + ground, depending on UPS configuration.
- See Installation Manual and submittal drawings for specific instructions.
- DC Input: 2 wire (positive and negative) + ground
- All wiring to be in accordance with all applicable national and/or local electrical codes.
  - DC cabling should be sized to give < 1% voltage drop at the nominal battery discharge current using three-wire separate conductors in positive, centre-tap and negative poles
  - Minimum access Clearance on all drawings.
  - Bottom cable entry through removable access plates. Punch plates to suit conduit size, then replace.
  - Control wiring and power wiring must be run in separate conduit.
  - Weights and dimensions shown do not include battery cabinet(s), distribution cabinet(s), or other options.
  - Backup emergency generator must be properly sized for UPS application and equipped with an isochronous governor for frequency regulation, and a UPS-compatible voltage regulator for voltage stability.
  - Input : THDI < 5% at full load.
  - Output : THDU < 1.5% Linear Load, < 3.5% Non Linear Load
  - If site configuration requires an external maintenance bypass, phase parity between UPS input and UPS bypass must be ensured. Consult Schneider Electric applications engineer.
  - References are per NEC 1999. Consult local codes for possible variations.
  - Narrow Cabinet dimensions – 13.9 in. wide.
  - Weight references installed weight with fully populated batteries and power modules.
  - BTU Rating: Batteries fully charged is a continuous rating.
- Additional Notes:**
- A. Temperature rating of conductors: 90°C (194°F). Reference NEC Table 310-16, 75°C column, using copper conductors. 75°C (167°F) cable terminal conductors assumed.
- B. Neutral conductor must be sized for 1.73 time phase current for full SMPS loads (50mm recommended)
- C. BTU rating for 10-30kVA transformer cubicles with or with our integrated bypass/distribution panel = 2433BTU/hr full load –batteries fully charged.
24. Ratings of the cables and overcurrent devices supplied for information only. User to consult with their engineering services before adopting

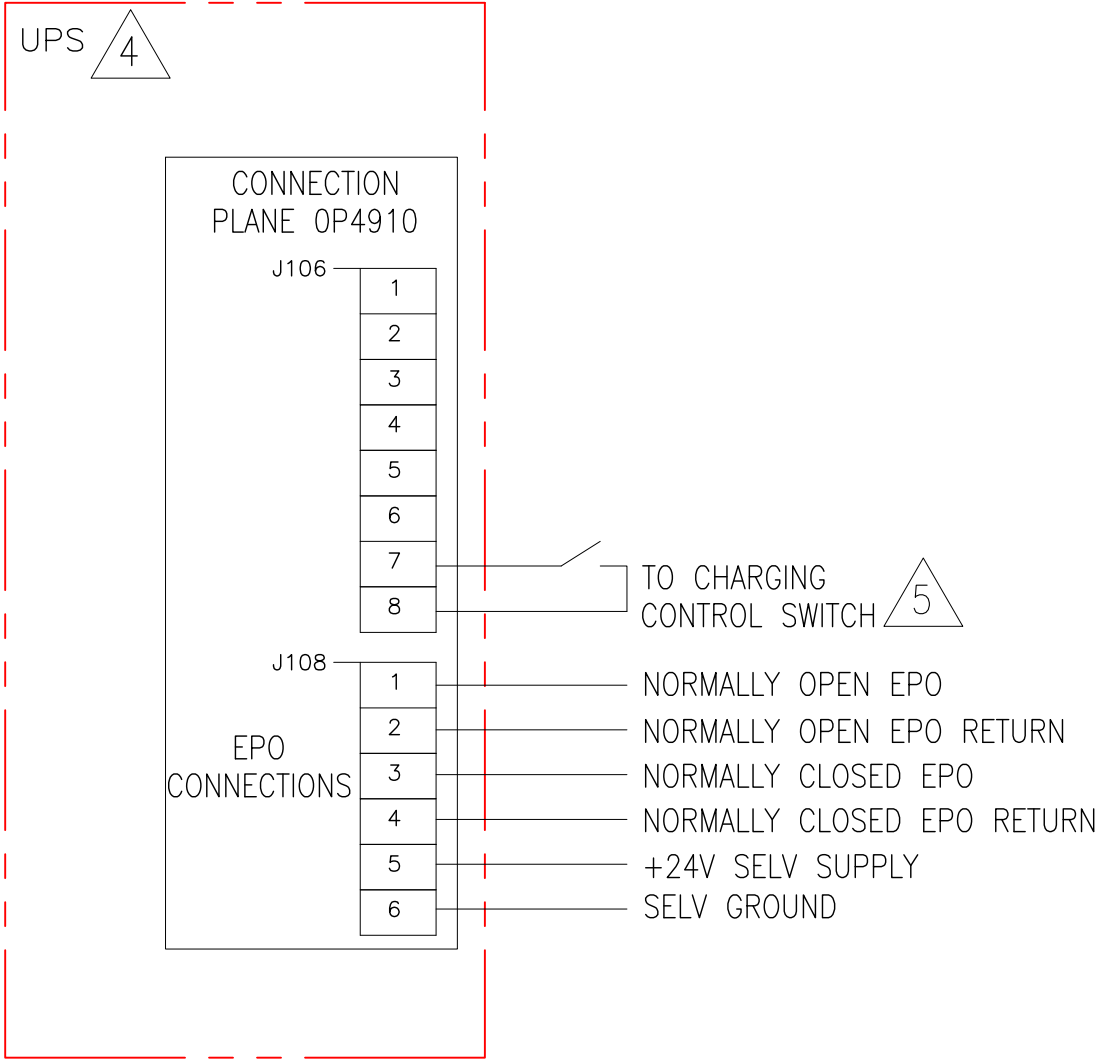
EFFICIENCY DETAILS				
SYSTEM	25% LOAD	50% LOAD	75% LOAD	100% LOAD
10KVA 400V	92.9	94.8	94.9	94.9
15KVA 400V	92.9	95.3	95.5	95.5
20KVA 400V	94.4	95.5	95.5	95.4
30KVA 400V	94.1	96	95.9	96.1
40KVA 400V	95	96	95.9	95.5

THIS DRAWING AND SPECIFICATIONS HEREIN ARE THE PROPERTY OF SCHNEIDER ELECTRIC AND SHALL NOT BE COPIED, REPRODUCED OR USED IN WHOLE OR IN PART, AS THE BASIS FOR THE MANUFACTURE OR SALE OF ITEMS WITHOUT WRITTEN PERMISSION FROM SCHNEIDER ELECTRIC. THIS DRAWING IS BASED UPON LATEST AVAILABLE INFORMATION AND IS SUBJECT TO CHANGE WITHOUT NOTICE.



TITLE:	MGE GALAXY 3500 Input:208/220V AC 3PH SINGLE/DUAL MAINS Output:208/220V AC 3PH 10-30kVA WIDER UPS 1 MOD SITE PLANNING GUIDE	DWG NO:	G35T10K30FW-1MOD	REV.	1
PROJECT:	DRAWINGS	DRAWN BY:	JAYAPRAKASH	27-JUL-16	ANGLE
		ENGINEER:	T.MULLER	27-JUL-16	PROJECTION
		APPROVED BY:	M.MAISSY	27-JUL-16	N/A





**NOTES:**

1. INSTALLATION SHALL COMPLY WITH ALL APPLICABLE NATIONAL, STATE AND LOCAL CODES.
2. REFER TO PRODUCT MANUALS FOR ADDITIONAL DETAILS PRIOR TO INSTALLATION AND SITE PREPARATION WORK..
3. USE ONLY 1-1.5 Sqmm COPPER WIRE FOR EPO CONNECTION.
- △4. APPLICABLE SKU : PLEASE REFER SHEET NUMBER 2.
- △5. WHEN PINS 7 AND 8 ARE CLOSED, THE UPS CHARGES BATTERIES WITH A PRE-DEFINED PERCENTAGE (0-25-50-75-100%) OF MAXIMUM CHARGING POWER. TO BE USED IN GENERATOR APPLICATIONS, OR IF SPECIAL CODES REQUIRES CONTROL OF CHARGING.

THIS DRAWING AND SPECIFICATIONS HEREIN ARE THE PROPERTY OF SCHNEIDER ELECTRIC AND SHALL NOT BE COPIED, REPRODUCED OR USED IN WHOLE OR IN PART, AS THE BASIS FOR THE MANUFACTURE OR SALE OF ITEMS WITHOUT WRITTEN PERMISSION FROM SCHNEIDER ELECTRIC. THIS DRAWING IS BASED UPON LATEST AVAILABLE INFORMATION AND IS SUBJECT TO CHANGE WITHOUT NOTICE.



TITLE: MGE GALAXY 3500  
 Input:208/220V AC 3PH SINGLE/DUAL MAINS  
 Output:208/220V AC 3PH  
 10-30kVA WIDER UPS 1 MOD  
 SYSTEM WIRING DIAGRAM

PROJECT: DRAWINGS | SHEET 9 OF 9

DWG NO:	C35T10K30FW-1MOD	REV:	0
DRAWN BY:	SHAHID ALI	19-OCT-11	ANGLE
ENGINEER:	T.MULLER	25-OCT-11	PROJECTION
APPROVED BY:	B.SHERIDAN	25-OCT-11	N/A