

NOTES: UNLESS OTHERWISE SPECIFIED.

1. INSTALLATION SHALL COMPLY WITH ALL APPLICABLE NATIONAL AND LOCAL CODES.
2. PLEASE REFER TO PRODUCT MANUALS FOR ADDITIONAL DETAILS.
3. ALL EXTERNAL WIRING BY CUSTOMER.
4. CUSTOMER IS RESPONSIBLE FOR CONNECTING ALL SCHNEIDER ELECTRIC SUPPLIED CABLES.
5. POWER AND CONTROL CABLES SHALL BE IN SEPARATE CONDUITS.
6. UPSTREAM PROTECTIVE DEVICE REQUIRED. PROVIDED BY CUSTOMER.
- △7. ONE CABINET SHOWN. FOR UP TO FOUR (4) BATTERY ENCLOSURE CONNECTIONS, REFER TO DRAWINGS 90-174701-00 OR 90-174701-01.
- △8. FOR STAND ALONE BATTERY CABINETS WITH TOP ENTRY SYSTEM CONFIGURATION, DC CONNECTION IS FED THROUGH THE TOP/BOTTOM ENTRY.
9. REFER TO DRAWING NO. 90-174700-00-ED FOR AND ELECTRICAL DATA, VARIOUS INPUT SOURCE REQUIREMENT AND HIGH RESISTANCE GROUNDING APPLICATION DETAILS.

UPS TOP ENTRY WITH BATTERY, INPUT-BYPASS ISO XFMR'S

THIS DRAWING AND SPECIFICATIONS HEREIN ARE THE PROPERTY OF SCHNEIDER ELECTRIC AND SHALL NOT BE COPIED, REPRODUCED OR USED IN WHOLE OR IN PART, AS THE BASIS FOR THE MANUFACTURE OR SALE OF ITEMS WITHOUT WRITTEN PERMISSION FROM SCHNEIDER ELECTRIC. THIS DRAWING IS BASED UPON LATEST AVAILABLE INFORMATION AND IS SUBJECT TO CHANGE WITHOUT NOTICE.

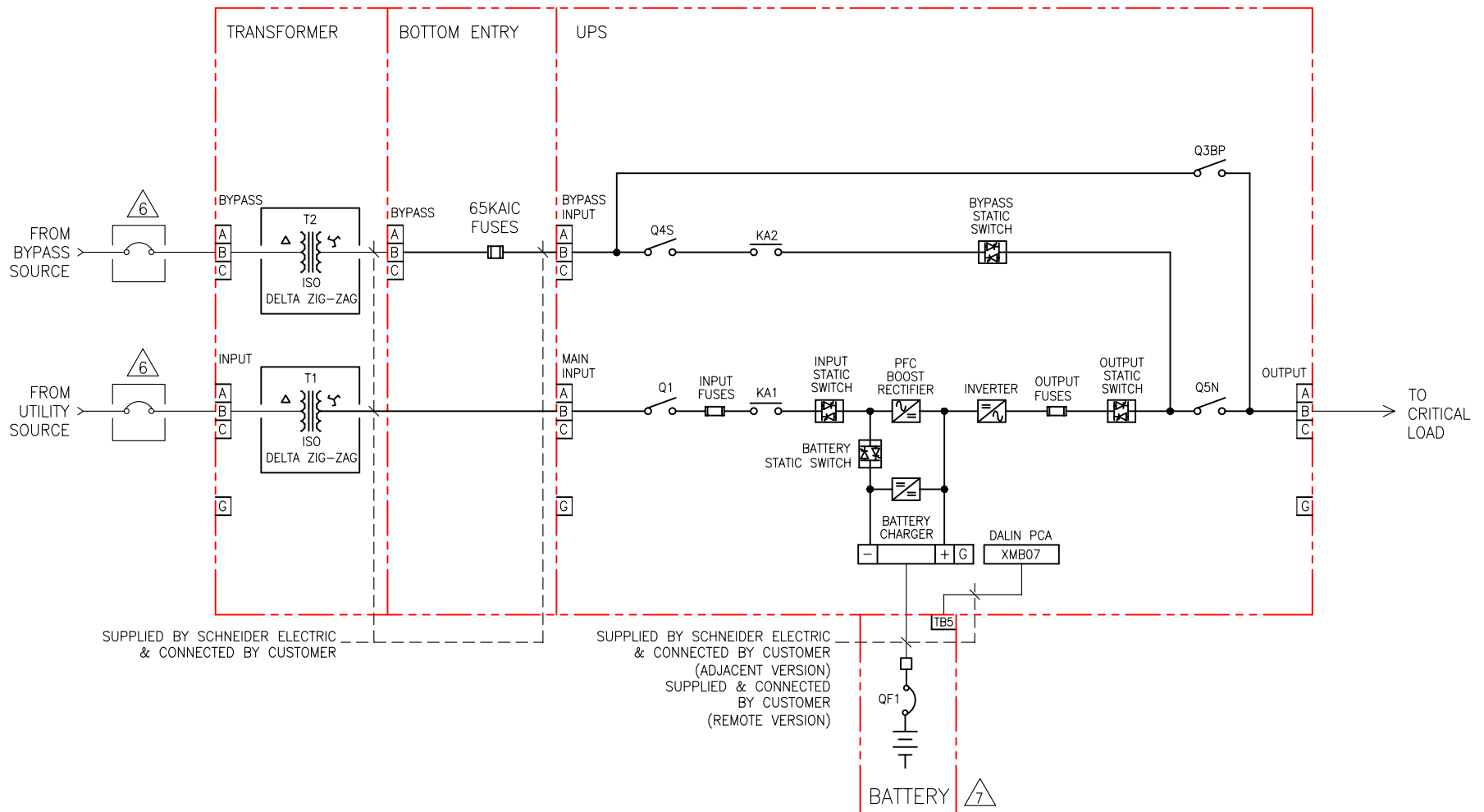


TITLE: GALAXY 5000 40-130kVA UPS
 Input/Output :- 480V/480V, 480V/208V,
 208V/208V, 220V/220V, 600V/600V, 600V/208V
 TOP/BOT ENTRY W/BATT IN-BYPASS XFMR'S
 SYSTEM ONE LINE DIAGRAM

DWG NO: 90-174738-00-SD REV. 0

DRAWN: B.KHOLOUSI/BALAMURUGAN	15-MAR-10	ANGLE
ENGINEER: I.KENNEDY	01-AUG-08	PROJECTION
APPROVED: B.SHERIDAN/F.DIOSA	01-AUG-08	N.A.

PROJECT: SUBMITTAL DRAWINGS SHEET 1 OF 2



SUPPLIED BY SCHNEIDER ELECTRIC
& CONNECTED BY CUSTOMER

SUPPLIED BY SCHNEIDER ELECTRIC
& CONNECTED BY CUSTOMER
(ADJACENT VERSION)
SUPPLIED & CONNECTED
BY CUSTOMER
(REMOTE VERSION)

BATTERY

NOTES: UNLESS OTHERWISE SPECIFIED.

1. INSTALLATION SHALL COMPLY WITH ALL APPLICABLE NATIONAL AND LOCAL CODES.
2. PLEASE REFER TO PRODUCT MANUALS FOR ADDITIONAL DETAILS.
3. ALL EXTERNAL WIRING BY CUSTOMER.
4. CUSTOMER IS RESPONSIBLE FOR CONNECTING ALL SCHNEIDER ELECTRIC SUPPLIED CABLES.
5. POWER AND CONTROL CABLES SHALL BE IN SEPARATE CONDUITS.
6. UPSTREAM PROTECTIVE DEVICE REQUIRED. PROVIDED BY CUSTOMER.
7. ONE CABINET SHOWN. FOR UP TO FOUR (4) BATTERY ENCLOSURE CONNECTIONS, REFER TO DRAWINGS 90-174701-00 OR 90-174701-01.
8. REFER TO DRAWING NO. 90-174700-00-ED FOR AND ELECTRICAL DATA, VARIOUS INPUT SOURCE REQUIREMENT AND HIGH RESISTANCE GROUNDING APPLICATION DETAILS.

UPS BOTTOM ENTRY KAIC WITH BATTERY, INPUT-BYPASS ISO XFMRs

THIS DRAWING AND SPECIFICATIONS HEREIN ARE THE PROPERTY OF SCHNEIDER ELECTRIC AND SHALL NOT BE COPIED, REPRODUCED OR USED IN WHOLE OR IN PART, AS THE BASIS FOR THE MANUFACTURE OR SALE OF ITEMS WITHOUT WRITTEN PERMISSION FROM SCHNEIDER ELECTRIC. THIS DRAWING IS BASED UPON LATEST AVAILABLE INFORMATION AND IS SUBJECT TO CHANGE WITHOUT NOTICE.

Schneider Electric

TITLE: GALAXY 5000 40-130kVA UPS
Input/Output :- 480V/480V, 480V/208V,
208V/208V, 220V/220V, 600V/600V, 600V/208V
TOP/BOT ENTRY W/BATT IN-BYPASS XFMRs
SYSTEM ONE LINE DIAGRAM

DWG NO: 90-174738-01-SD REV. 0

DRAWN: B.KHOLOUSI/BALAMURUGAN 15-MAR-10 ANGLE
ENGINEER: I.KENNEDY 01-AUG-08 PROJECTION

PROJECT: SUBMITTAL DRAWINGS SHEET 2 OF 2

APPROVED: B.SHERIDAN/F.DIOSA 01-AUG-08 N.A