

NOTES: UNLESS OTHERWISE SPECIFIED.

1. INSTALLATION SHALL COMPLY WITH ALL APPLICABLE NATIONAL AND LOCAL CODES.
2. PLEASE REFER TO PRODUCT MANUALS FOR ADDITIONAL DETAILS.
3. ALL EXTERNAL WIRING BY CUSTOMER.
4. CUSTOMER IS RESPONSIBLE FOR CONNECTING ALL SCHNEIDER ELECTRIC SUPPLIED CABLES.
5. POWER AND CONTROL CABLES SHALL BE IN SEPARATE CONDUITS.
- △ 6. UPSTREAM PROTECTIVE DEVICE REQUIRED. PROVIDED BY CUSTOMER.
- △ 7. ONE CABINET SHOWN. FOR UP TO FOUR (4) BATTERY ENCLOSURE CONNECTIONS, REFER TO DRAWINGS 90-174701-00 or 90-174701-01.
- △ 8. FOR STAND ALONE BATTERY CABINETS WITH TOP ENTRY SYSTEM CONFIGURATION, DC CONNECTION IS FED THROUGH THE ADJACENT MBC.
- △ 9. FOR 2CB MBC OPTION ONLY. SHOULD FEED FROM THE SAME SOURCE AS THE MBC.
- △ 10. THE OUTPUT NEUTRAL IS BONDED TO GROUND.
11. REFER TO DRAWING NO. 90-174700-00-ED FOR AND ELECTRICAL DATA, VARIOUS INPUT SOURCE REQUIREMENT AND HIGH RESISTANCE GROUNDING APPLICATION DETAILS.

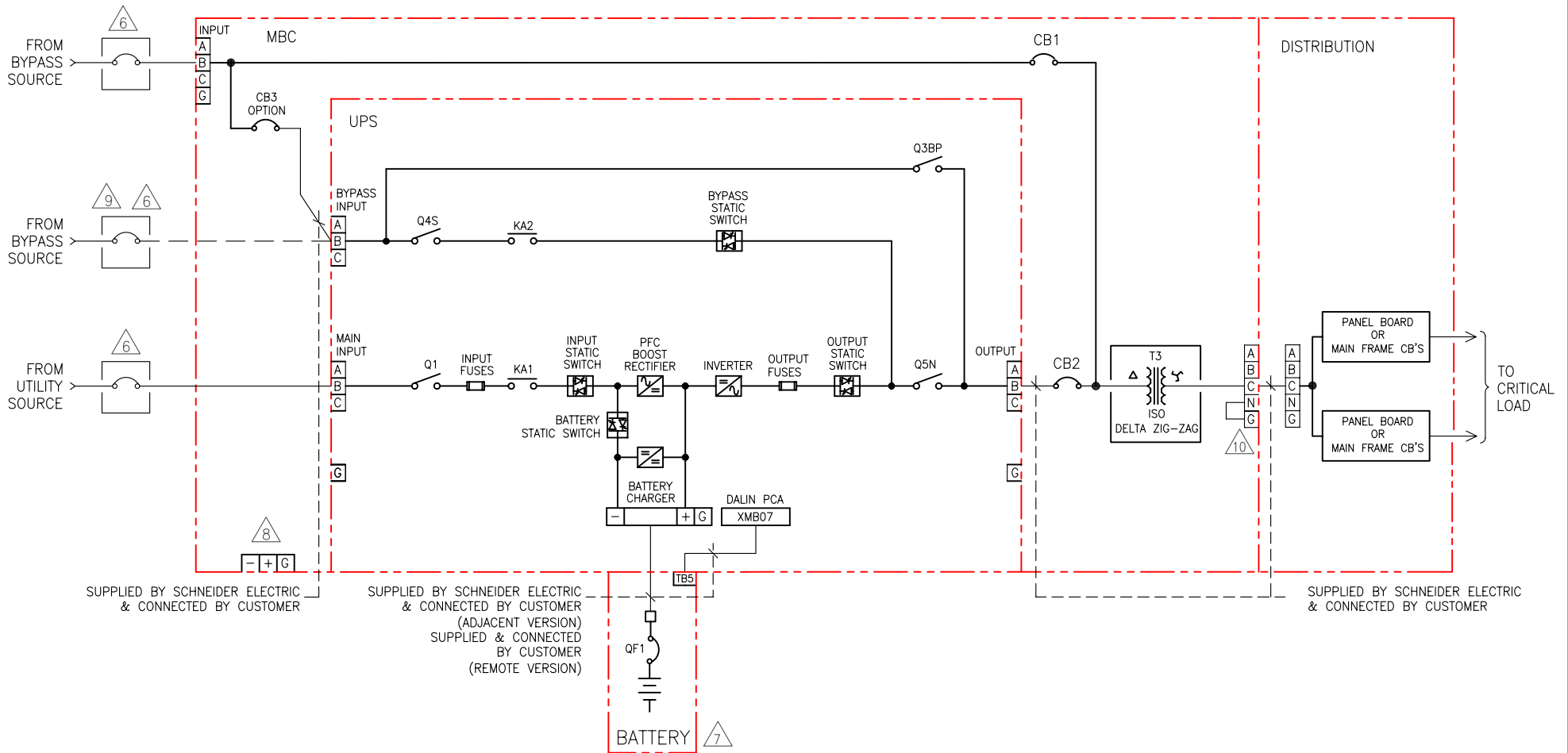
## UPS WITH SINGLE INPUT, BATTERY, MBC, LOAD XFMR & DISTRIBUTION

THIS DRAWING AND SPECIFICATIONS HEREIN ARE THE PROPERTY OF SCHNEIDER ELECTRIC AND SHALL NOT BE COPIED, REPRODUCED OR USED IN WHOLE OR IN PART, AS THE BASIS FOR THE MANUFACTURE OR SALE OF ITEMS WITHOUT WRITTEN PERMISSION FROM SCHNEIDER ELECTRIC. THIS DRAWING IS BASED UPON LATEST AVAILABLE INFORMATION AND IS SUBJECT TO CHANGE WITHOUT NOTICE.

**Schneider Electric**

TITLE: GALAXY 5000 40-130kVA UPS  
 Input/Output :- 480V/480V, 480V/208V,  
 208V/208V, 220V/220V, 600V/600V, 600V/208V  
 W/BATTERY MBC LOAD XFMR & DB  
 SYSTEM ONE LINE DIAGRAM

DWG NO: 90-174771-00-SD	REV: 0
DRAWN: B.KHOLOUSI/BALAMURUGAN	10-MAR-10
ENGINEER: I.KENNEDY	26-AUG-08
APPROVED: B.SHERIDAN/F.DIOSA	26-AUG-08
PROJECT: SUBMITTAL DRAWINGS SHEET 1 OF 3	PROJECTION: N.A.



SUPPLIED BY SCHNEIDER ELECTRIC & CONNECTED BY CUSTOMER

SUPPLIED BY SCHNEIDER ELECTRIC & CONNECTED BY CUSTOMER (ADJACENT VERSION)  
 SUPPLIED & CONNECTED BY CUSTOMER (REMOTE VERSION)

SUPPLIED BY SCHNEIDER ELECTRIC & CONNECTED BY CUSTOMER

NOTES: UNLESS OTHERWISE SPECIFIED.

1. INSTALLATION SHALL COMPLY WITH ALL APPLICABLE NATIONAL AND LOCAL CODES.
2. PLEASE REFER TO PRODUCT MANUALS FOR ADDITIONAL DETAILS.
3. ALL EXTERNAL WIRING BY CUSTOMER.
4. CUSTOMER IS RESPONSIBLE FOR CONNECTING ALL SCHNEIDER ELECTRIC SUPPLIED CABLES.
5. POWER AND CONTROL CABLES SHALL BE IN SEPARATE CONDUITS.
- △ 6. UPSTREAM PROTECTIVE DEVICE REQUIRED. PROVIDED BY CUSTOMER.
- △ 7. ONE CABINET SHOWN. FOR UP TO FOUR (4) BATTERY ENCLOSURE CONNECTIONS, REFER TO DRAWINGS 90-174701-00 or 90-174701-01.
- △ 8. FOR STAND ALONE BATTERY CABINETS WITH TOP ENTRY SYSTEM CONFIGURATION, DC CONNECTION IS FED THROUGH THE ADJACENT MBC.
- △ 9. FOR 2CB MBC OPTION ONLY. SHOULD FEED FROM THE SAME SOURCE AS THE MBC.
- △ 10. THE OUTPUT NEUTRAL IS BONDED TO GROUND.
11. REFER TO DRAWING NO. 90-174700-00-ED FOR AND ELECTRICAL DATA, VARIOUS INPUT SOURCE REQUIREMENT AND HIGH RESISTANCE GROUNDING APPLICATION DETAILS.

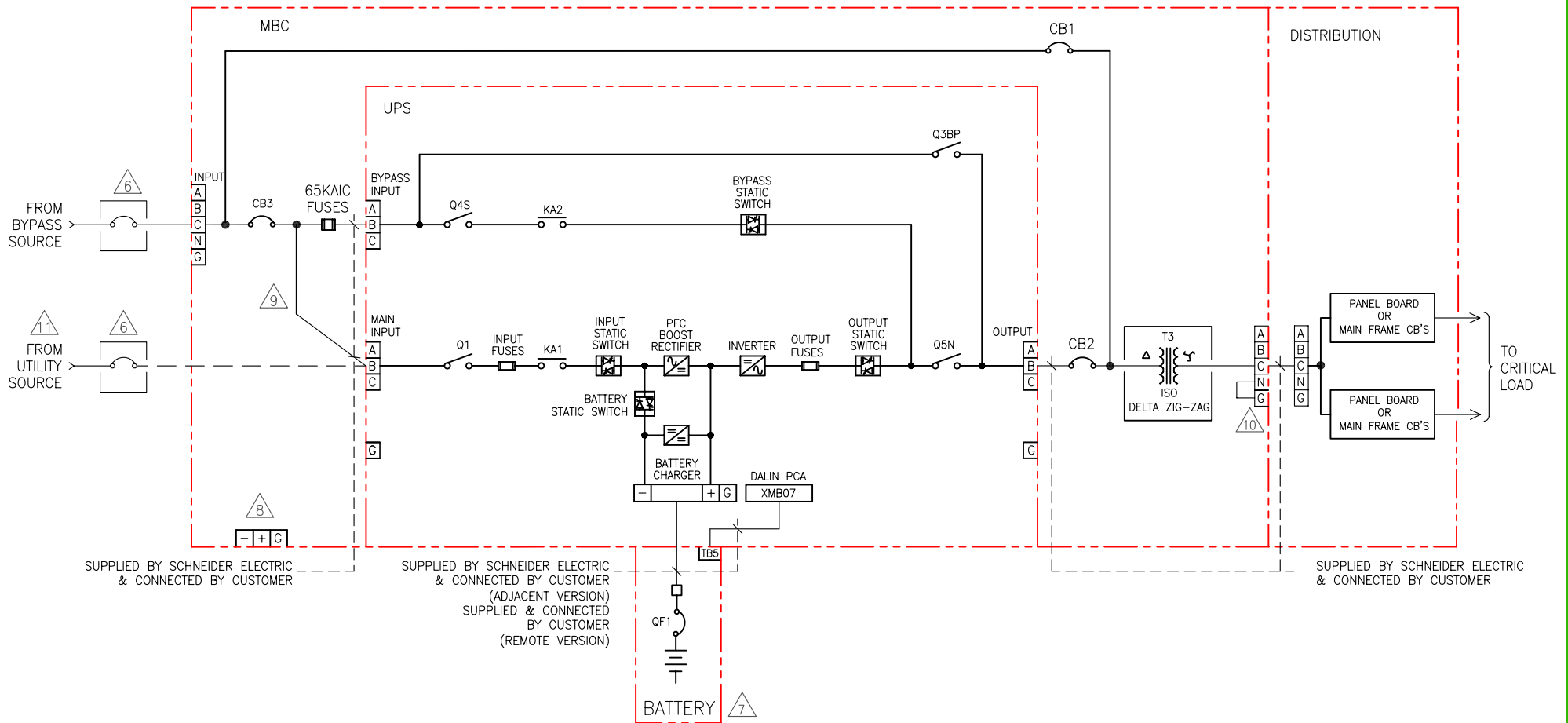
### UPS WITH DUAL INPUT, BATTERY, MBC, LOAD XFMR & DISTRIBUTION

THIS DRAWING AND SPECIFICATIONS HEREIN ARE THE PROPERTY OF SCHNEIDER ELECTRIC AND SHALL NOT BE COPIED, REPRODUCED OR USED IN WHOLE OR IN PART, AS THE BASIS FOR THE MANUFACTURE OR SALE OF ITEMS WITHOUT WRITTEN PERMISSION FROM SCHNEIDER ELECTRIC. THIS DRAWING IS BASED UPON LATEST AVAILABLE INFORMATION AND IS SUBJECT TO CHANGE WITHOUT NOTICE.



TITLE: GALAXY 5000 40-130kVA UPS  
 Input/Output :- 480V/480V, 480V/208V,  
 208V/208V, 220V/220V, 600V/600V, 600V/208V  
 W/BATTERY MBC LOAD XFMR & DB  
 SYSTEM ONE LINE DIAGRAM

DWG NO: 90-174771-01-SD	REV. 0
DRAWN: B.KHOLOUSI/BALAMURUGAN	10-MAR-10
ENGINEER: I.KENNEDY	26-AUG-08
APPROVED: B.SHERIDAN/F.DIOSA	26-AUG-08
PROJECT: SUBMITTAL DRAWINGS SHEET 2 OF 3	PROJECTION: N.A.



NOTES: UNLESS OTHERWISE SPECIFIED.

1. INSTALLATION SHALL COMPLY WITH ALL APPLICABLE NATIONAL AND LOCAL CODES.
2. PLEASE REFER TO PRODUCT MANUALS FOR ADDITIONAL DETAILS.
3. ALL EXTERNAL WIRING BY CUSTOMER.
4. CUSTOMER IS RESPONSIBLE FOR CONNECTING ALL SCHNEIDER ELECTRIC SUPPLIED CABLES.
5. POWER AND CONTROL CABLES SHALL BE IN SEPARATE CONDUITS.
- △ 6. UPSTREAM PROTECTIVE DEVICE REQUIRED. PROVIDED BY CUSTOMER.
- △ 7. ONE CABINET SHOWN. FOR UP TO FOUR (4) BATTERY ENCLOSURE CONNECTIONS, REFER TO DRAWINGS 90-174701-00 or 90-174701-01.
- △ 8. FOR STAND ALONE BATTERY CABINETS WITH TOP ENTRY SYSTEM CONFIGURATION, DC CONNECTION IS FED THROUGH THE ADJACENT MBC.
- △ 9. PROVIDED FOR SINGLE INPUT SYSTEM ONLY. REMOVE FOR DUAL INPUT SYSTEM.
- △ 10. THE OUTPUT NEUTRAL IS BONDED TO GROUND.
- △ 11. FOR DUAL INPUT SYSTEM ONLY.
12. REFER TO DRAWING NO. 90-174700-00-ED FOR AND ELECTRICAL DATA, VARIOUS INPUT SOURCE REQUIREMENT AND HIGH RESISTANCE GROUNDING APPLICATION DETAILS.

### UPS WITH DUAL INPUT BATTERY, MBC, KAIC FUSES, LOAD XFMR & DISTRIBUTION

THIS DRAWING AND SPECIFICATIONS HEREIN ARE THE PROPERTY OF SCHNEIDER ELECTRIC AND SHALL NOT BE COPIED, REPRODUCED OR USED IN WHOLE OR IN PART, AS THE BASIS FOR THE MANUFACTURE OR SALE OF ITEMS WITHOUT WRITTEN PERMISSION FROM SCHNEIDER ELECTRIC. THIS DRAWING IS BASED UPON LATEST AVAILABLE INFORMATION AND IS SUBJECT TO CHANGE WITHOUT NOTICE.



TITLE: GALAXY 5000 40-130kVA UPS  
 Input/Output :- 480V/480V, 480V/208V,  
 208V/208V, 220V/220V, 600V/600V, 600V/208V  
 W/BATTERY MBC LOAD XFMR & DB  
 SYSTEM ONE LINE DIAGRAM

DWG NO: 90-174771-02-SD	REV: 0
DRAWN: B.KHOLOUSI/BALAMURUGAN	10-MAR-10
ENGINEER: I.KENNEDY	26-AUG-08
APPROVED: B.SHERIDAN/F.DIOSA	26-AUG-08
PROJECT: SUBMITTAL DRAWINGS SHEET 3 OF 3	ANGLE PROJECTION