

NOTES: UNLESS OTHERWISE SPECIFIED.

1. INSTALLATION SHALL COMPLY WITH ALL APPLICABLE NATIONAL AND LOCAL CODES.
2. PLEASE REFER TO PRODUCT MANUALS FOR ADDITIONAL DETAILS.
3. ALL EXTERNAL WIRING BY CUSTOMER.
4. CUSTOMER IS RESPONSIBLE FOR CONNECTING ALL SCHNEIDER ELECTRIC SUPPLIED CABLES.
5. POWER AND CONTROL CABLES SHALL BE IN SEPARATE CONDUITS.
- △ 6. UPSTREAM PROTECTIVE DEVICE REQUIRED. PROVIDED BY CUSTOMER.
- △ 7. ONE CABINET SHOWN. FOR UP TO FOUR (4) BATTERY ENCLOSURE CONNECTIONS, REFER TO DRAWINGS 90-174701-00 or 90-174701-01.
- △ 8. FOR STAND ALONE BATTERY CABINETS WITH TOP ENTRY SYSTEM CONFIGURATION, DC CONNECTION IS FED THROUGH THE ADJACENT MBC.
- △ 9. FOR 2CB MBC OPTION ONLY. SHOULD FEED FROM THE SAME SOURCE AS THE MBC.
10. REFER TO DRAWING NO. 90-174700-00-ED FOR AND ELECTRICAL DATA, VARIOUS INPUT SOURCE REQUIREMENT AND HIGH RESISTANCE GROUNDING APPLICATION DETAILS.

### UPS WITH DUAL INPUT, BATTERY & 2CB WALL MOUNT MBP

THIS DRAWING AND SPECIFICATIONS HEREIN ARE THE PROPERTY OF SCHNEIDER ELECTRIC AND SHALL NOT BE COPIED, REPRODUCED OR USED IN WHOLE OR IN PART, AS THE BASIS FOR THE MANUFACTURE OR SALE OF ITEMS WITHOUT WRITTEN PERMISSION FROM SCHNEIDER ELECTRIC. THIS DRAWING IS BASED UPON LATEST AVAILABLE INFORMATION AND IS SUBJECT TO CHANGE WITHOUT NOTICE.

**Schneider Electric**

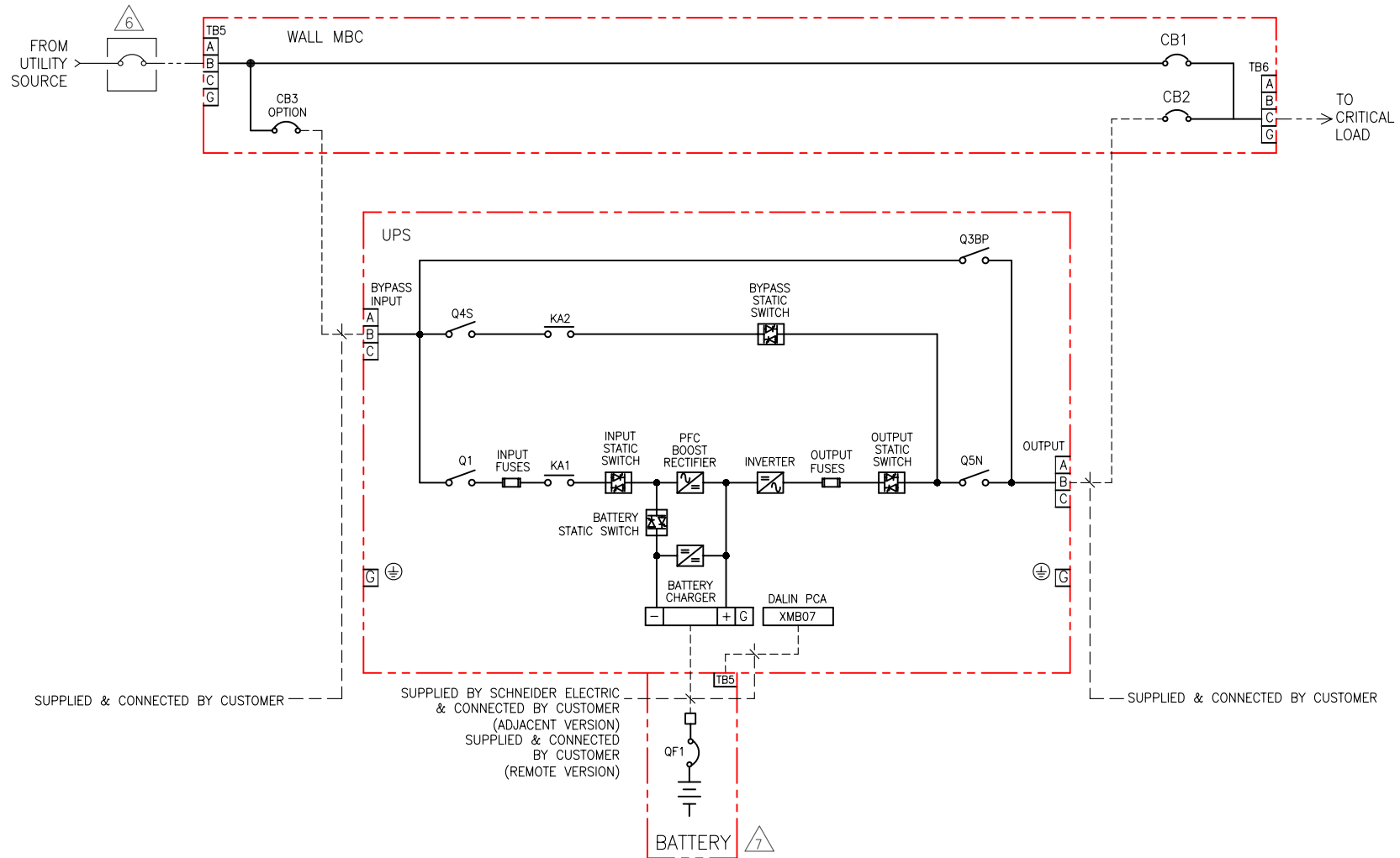
TITLE: GALAXY 5000 40-130kVA UPS  
 Input/Output :- 480V/480V, 480V/208V,  
 208V/208V, 220V/220V, 600V/600V, 600V/208V  
 DUAL INPUT W/BATTERY WALL MOUNT MBP  
 SYSTEM ONE LINE DIAGRAM

DWG NO: 90-174776-00-SD REV. 0

DRAWN: B.KHOLOUSI/BALAMURUGAN 04-MAR-10 ANGLE  
 ENGINEER: I.KENNEDY 16-SEP-08 PROJECTION

PROJECT: SUBMITTAL DRAWINGS SHEET 1 OF 2

APPROVED: B.SHERIDAN/F.DIOSA 16-SEP-08 N.A



SUPPLIED & CONNECTED BY CUSTOMER

SUPPLIED BY SCHNEIDER ELECTRIC & CONNECTED BY CUSTOMER (ADJACENT VERSION)  
 SUPPLIED & CONNECTED BY CUSTOMER (REMOTE VERSION)

SUPPLIED & CONNECTED BY CUSTOMER

NOTES: UNLESS OTHERWISE SPECIFIED.

1. INSTALLATION SHALL COMPLY WITH ALL APPLICABLE NATIONAL AND LOCAL CODES.
2. PLEASE REFER TO PRODUCT MANUALS FOR ADDITIONAL DETAILS.
3. ALL EXTERNAL WIRING BY CUSTOMER.
4. CUSTOMER IS RESPONSIBLE FOR CONNECTING ALL SCHNEIDER ELECTRIC SUPPLIED CABLES.
5. POWER AND CONTROL CABLES SHALL BE IN SEPARATE CONDUITS.
- △6. UPSTREAM PROTECTIVE DEVICE REQUIRED. PROVIDED BY CUSTOMER.
- △7. ONE CABINET SHOWN. FOR UP TO FOUR (4) BATTERY ENCLOSURE CONNECTIONS, REFER TO DRAWINGS 90-174701-00 or 90-174701-01.
- △8. FOR STAND ALONE BATTERY CABINETS WITH TOP ENTRY SYSTEM CONFIGURATION, DC CONNECTION IS FED THROUGH THE ADJACENT MBC.
- △9. FOR 2CB MBC OPTION ONLY. SHOULD FEED FROM THE SAME SOURCE AS THE MBC.
10. REFER TO DRAWING NO. 90-174700-00-ED FOR AND ELECTRICAL DATA, VARIOUS INPUT SOURCE REQUIREMENT AND HIGH RESISTANCE GROUNDING APPLICATION DETAILS.

UPS WITH SINGLE INPUT, BATTERY & 3CB WALL MOUNT MBP

THIS DRAWING AND SPECIFICATIONS HEREIN ARE THE PROPERTY OF SCHNEIDER ELECTRIC AND SHALL NOT BE COPIED, REPRODUCED OR USED IN WHOLE OR IN PART, AS THE BASIS FOR THE MANUFACTURE OR SALE OF ITEMS WITHOUT WRITTEN PERMISSION FROM SCHNEIDER ELECTRIC. THIS DRAWING IS BASED UPON LATEST AVAILABLE INFORMATION AND IS SUBJECT TO CHANGE WITHOUT NOTICE.



TITLE: GALAXY 5000 40-130kVA UPS  
 Input/Output :- 480V/480V, 480V/208V, 208V/208V, 220V/220V, 600V/600V, 600V/208V  
 DUAL INPUT W/BATTERY WALL MOUNT MBP SYSTEM ONE LINE DIAGRAM

DWG NO: 90-174776-01-SD  
 DRAWN: B.KHOLOUSI/BALAMURUGAN  
 ENGINEER: I.KENNEDY  
 APPROVED: B.SHERIDAN/F.DIOSA

REV. 0  
 04-MAR-10  
 16-SEP-08  
 16-SEP-08

ANGLE  
 PROJECTION  
 N.A

PROJECT: SUBMITTAL DRAWINGS SHEET 2 OF 2