

NOTES: UNLESS OTHERWISE SPECIFIED.

1. INSTALLATION SHALL COMPLY WITH ALL APPLICABLE NATIONAL AND LOCAL CODES.
2. PLEASE REFER TO PRODUCT MANUALS FOR ADDITIONAL DETAILS.
3. ALL EXTERNAL WIRING BY CUSTOMER.
4. CUSTOMER IS RESPONSIBLE FOR CONNECTING ALL SCHNEIDER ELECTRIC SUPPLIED CABLES.
5. POWER AND CONTROL CABLES SHALL BE IN SEPARATE CONDUITS.
- △ 6. UPSTREAM PROTECTIVE DEVICE REQUIRED. PROVIDED BY CUSTOMER.
- △ 7. ONE CABINET SHOWN. FOR UP TO FOUR (4) BATTERY ENCLOSURE CONNECTIONS, REFER TO DRAWINGS 90-174701-00 or 90-174701-01.
- △ 8. FOR STAND ALONE BATTERY CABINETS WITH TOP ENTRY SYSTEM CONFIGURATION, DC CONNECTION IS FED THROUGH THE ADJACENT MBC.
- △ 9. FOR 2CB MBC OPTION ONLY. SHOULD FEED FROM THE SAME SOURCE AS THE MBC.
- △ 10. THE OUTPUT NEUTRAL IS BONDED TO GROUND.
11. REFER TO DRAWING NO. 90-174700-00-ED FOR AND ELECTRICAL DATA, VARIOUS INPUT SOURCE REQUIREMENT AND HIGH RESISTANCE GROUNDING APPLICATION DETAILS.

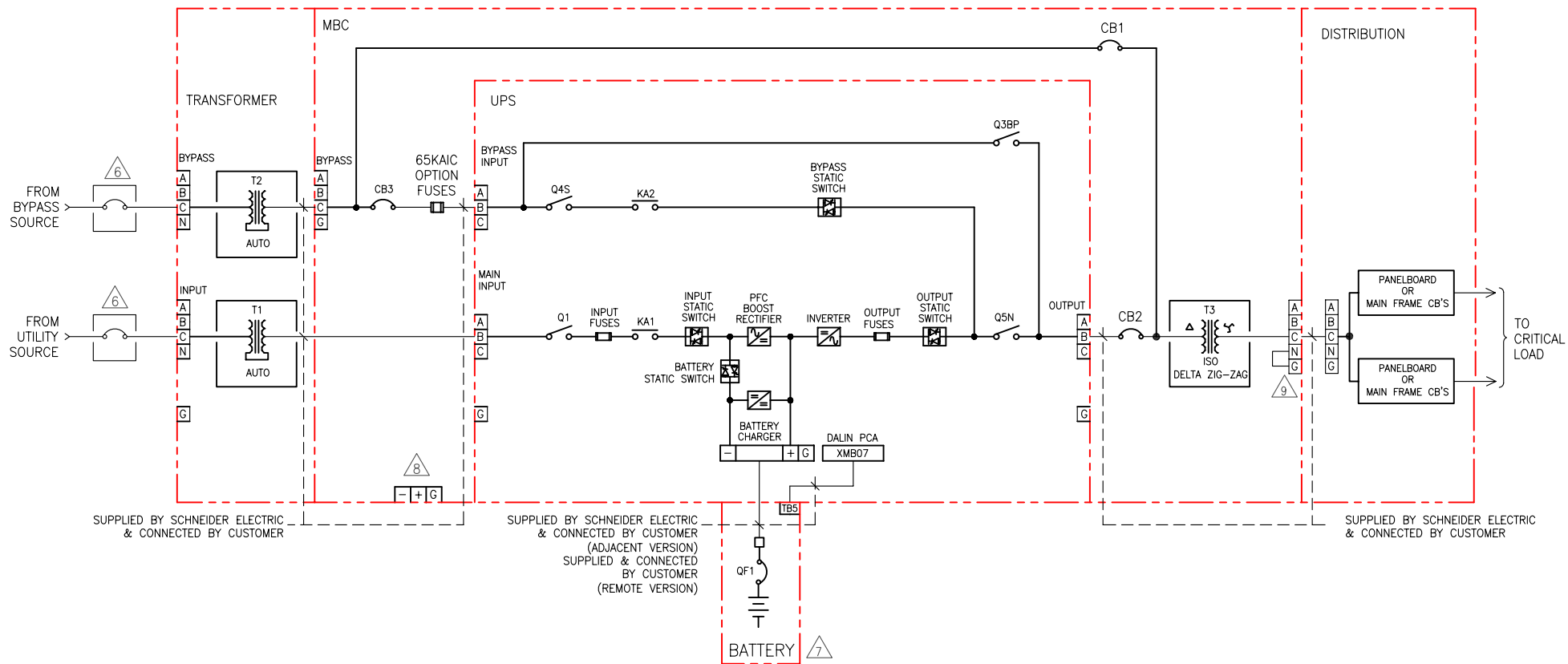
UPS WITH BATTERY, MBC INPUT-BYPASS-LOAD ISOLATION XFMRS & DISTRIBUTION

THIS DRAWING AND SPECIFICATIONS HEREIN ARE THE PROPERTY OF SCHNEIDER ELECTRIC AND SHALL NOT BE COPIED, REPRODUCED OR USED IN WHOLE OR IN PART, AS THE BASIS FOR THE MANUFACTURE OR SALE OF ITEMS WITHOUT WRITTEN PERMISSION FROM SCHNEIDER ELECTRIC. THIS DRAWING IS BASED UPON LATEST AVAILABLE INFORMATION AND IS SUBJECT TO CHANGE WITHOUT NOTICE.

Schneider Electric

TITLE: GALAXY 5000 40-130kVA UPS
Input/Output :- 480V/480V, 480V/208V,
208V/208V, 220V/220V, 600V/600V, 600V/208V
W/BATTERY MBC INPUT-BYPASS-LOAD XFMRS & DB
SYSTEM ONE LINE DIAGRAM

| | |
|--|------------------|
| DWG NO: 90-174775-00-SD | REV: 0 |
| DRAWN: B.KHOLLOUSI/BALAMURUGAN | 04-MAR-10 |
| ENGINEER: I.KENNEDY | 16-SEP-08 |
| APPROVED: B.SHERIDAN/F.DIOSA | 16-SEP-08 |
| PROJECT: SUBMITTAL DRAWINGS SHEET 1 OF 2 | ANGLE PROJECTION |



NOTES: UNLESS OTHERWISE SPECIFIED.

1. INSTALLATION SHALL COMPLY WITH ALL APPLICABLE NATIONAL AND LOCAL CODES.
2. PLEASE REFER TO PRODUCT MANUALS FOR ADDITIONAL DETAILS.
3. ALL EXTERNAL WIRING BY CUSTOMER.
4. CUSTOMER IS RESPONSIBLE FOR CONNECTING ALL SCHNEIDER ELECTRIC SUPPLIED CABLES.
5. POWER AND CONTROL CABLES SHALL BE IN SEPARATE CONDUITS.
- △6. UPSTREAM PROTECTIVE DEVICE REQUIRED. PROVIDED BY CUSTOMER.
- △7. ONE CABINET SHOWN. FOR UP TO FOUR (4) BATTERY ENCLOSURE CONNECTIONS, REFER TO DRAWINGS 90-174701-00 or 90-174701-01.
- △8. FOR STAND ALONE BATTERY CABINETS WITH TOP ENTRY SYSTEM CONFIGURATION, DC CONNECTION IS FED THROUGH THE ADJACENT MBC.
- △9. THE OUTPUT NEUTRAL IS BONDED TO GROUND.
10. REFER TO DRAWING NO. 90-174700-00-ED FOR AND ELECTRICAL DATA, VARIOUS INPUT SOURCE REQUIREMENT AND HIGH RESISTANCE GROUNDING APPLICATION DETAILS.

UPS WITH BATTERY, MBC INPUT-BYPASS AUTO XFMR'S, LOAD ISOLATION XFMR'S & DISTRIBUTION

THIS DRAWING AND SPECIFICATIONS HEREIN ARE THE PROPERTY OF SCHNEIDER ELECTRIC AND SHALL NOT BE COPIED, REPRODUCED OR USED IN WHOLE OR IN PART, AS THE BASIS FOR THE MANUFACTURE OR SALE OF ITEMS WITHOUT WRITTEN PERMISSION FROM SCHNEIDER ELECTRIC. THIS DRAWING IS BASED UPON LATEST AVAILABLE INFORMATION AND IS SUBJECT TO CHANGE WITHOUT NOTICE.

Schneider Electric

TITLE: GALAXY 5000 40-130kVA UPS
 Input/Output :- 480V/480V, 480V/208V,
 208V/208V, 220V/220V, 600V/600V, 600V/208V
 W/BATTERY MBC INPUT-BYPASS-LOAD XFMR'S & DB
 SYSTEM ONE LINE DIAGRAM

DWG NO: 90-174775-01-SD REV. 0
 DRAWN: B.KHOLOUSI/BALAMURUGAN 04-MAR-10 ANGLE
 ENGINEER: I.KENNEDY 16-SEP-08 PROJECTION
 APPROVED: B.SHERIDAN/F.DIOSA 16-SEP-08 N.A

PROJECT: SUBMITTAL DRAWINGS SHEET 2 OF 2