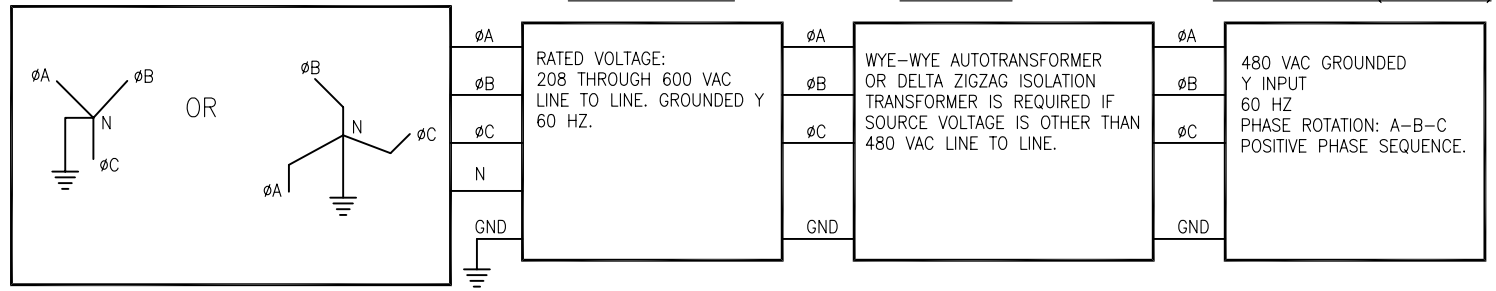
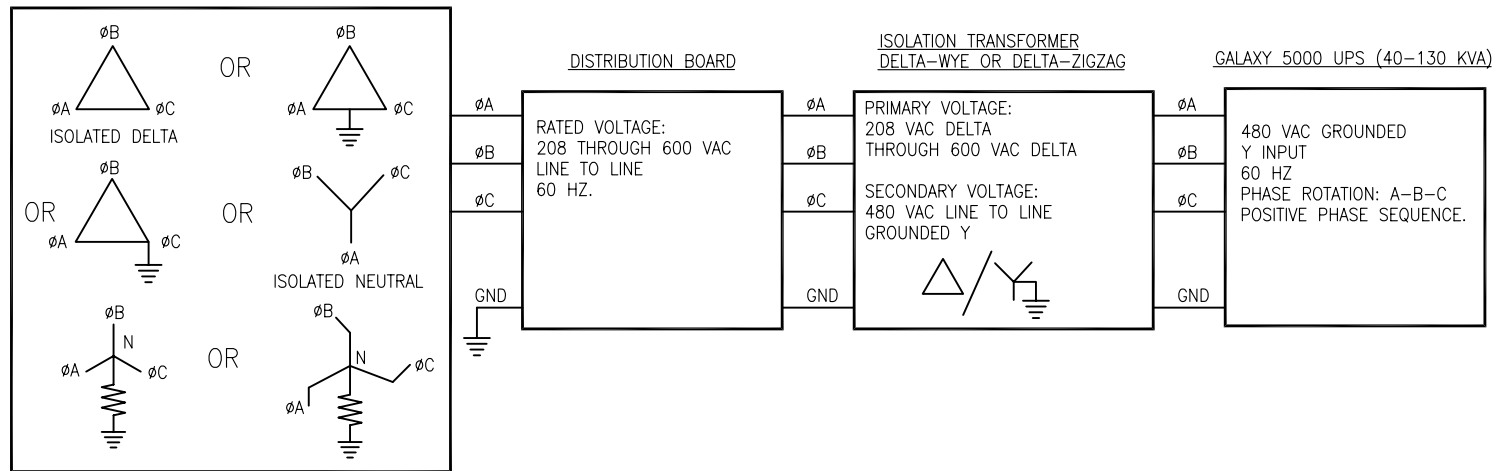


## GENERAL DIAGRAM OF GALAXY 5000 INPUT SOURCE REQUIREMENT

ACCEPTABLE SOURCES  
(WITH SOLIDLY GROUND NEUTRAL)

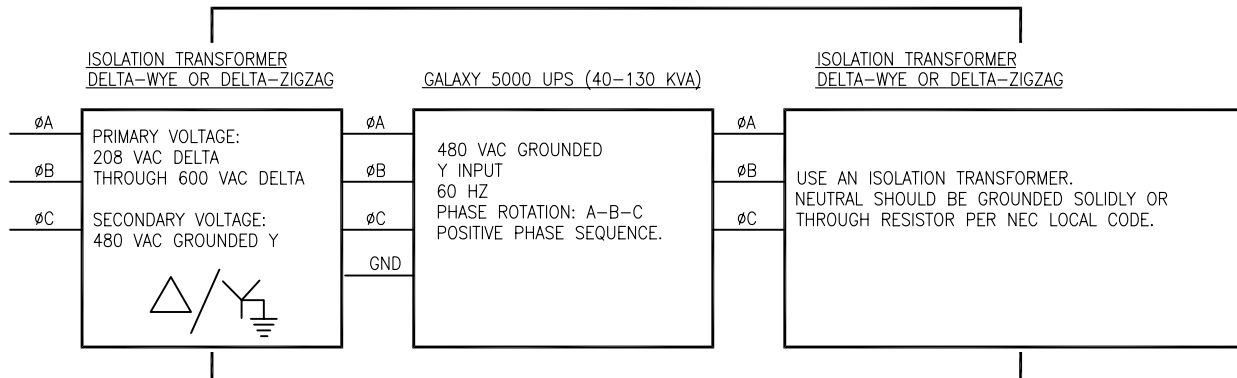


SOURCES THAT REQUIRE DELTA-WYE OR DELTA ZIGZAG ISOLATION TRANSFORMER TO FEED GALAXY 5000 UPS



## GENERAL DIAGRAM OF HIGH RESISTANCE GROUNDING APPLICATION

ALL PHASES INSIDE THE DOTTED LINE CAN NOT BE USED FOR GROUND FAULT TEST



THIS DRAWING AND SPECIFICATIONS HEREIN ARE THE PROPERTY OF SCHNEIDER ELECTRIC AND SHALL NOT BE COPIED, REPRODUCED OR USED IN WHOLE OR IN PART, AS THE BASIS FOR THE MANUFACTURE OR SALE OF ITEMS WITHOUT WRITTEN PERMISSION FROM SCHNEIDER ELECTRIC. THIS DRAWING IS BASED UPON LATEST AVAILABLE INFORMATION AND IS SUBJECT TO CHANGE WITHOUT NOTICE.



TITLE: GALAXY 5000 40-130kVA UPS  
Input/Output :- 480V/480V, 480V/208V, 208V/208V, 220V/220V, 600V/600V, 600V/208V  
ELECTRICAL DATA  
PROJECT: SUBMITTAL DRAWINGS SHEET 1 OF 2

DWG NO:	90-174700-00-ED	REV.	0
DRAWN:	B.KHOLOUSI/BALAMURGAN	03-MAR-10	ANGLE PROJECTION
ENGINEER:	I.KENNEDY	01-JUL-08	
APPROVED:	B.SHERIDAN/F.DIOSA	01-JUL-08	N.A.

VIN/VOUT	220V/220V						600V/208V						600V/600V					
RATING AT 0.9 PF LAG.	40KVA	50KVA	60KVA	80KVA	100KVA	130KVA	40KVA	50KVA	60KVA	80KVA	100KVA	130KVA	40KVA	50KVA	60KVA	80KVA	100KVA	130KVA
INPUT VOLTAGE/ OPTIONAL BYPASS INPUT VOLTAGE	220VAC 3PH 60HZ 3W+G						600VAC 3PH 60HZ 3W+G						600VAC 3PH 60HZ 3W+G					
NOMINAL INPUT CURRENT ON UPS/ON BYPASS (A/A)	105/105	129/131	155/157	205/209	255/262	329/340	38/38	47/47	57/58	75/77	94/96	121/125	38/38	47/47	57/58	75/77	94/96	121/125
MAXIMUM INPUT CURRENT (BATTERY CHARGING) (A/A)	129	153	192	242	314	397	47	56	70	89	115	146	47	56	70	89	115	146
OUTPUT VOLTAGE	220VAC 3PH 60HZ 3 OR 4W +G						208VAC 3PH 60HZ 3 OR 4W +G						600VAC 3PH 60HZ 3 OR 4W +G					
OUTPUT CURRENT (FULL LOAD) (A/A)	105	131	157	209	262	340	111	138	166	222	277	360	38	47	58	77	96	125
BATTERY DC FLOAT VOLTAGE (MAX) (VDC)	490	490	490	490	490	490	490	490	490	490	490	490	490	490	490	490	490	490
BATTERY DC NOMINAL VOLTAGE (VDC)	432	432	432	432	432	432	432	432	432	432	432	432	432	432	432	432	432	432
BATTERY DC CURRENT AT NOMINAL VOLTAGE (A)	90	113	135	180	225	293	90	113	135	180	225	293	90	113	135	180	225	293
BATTERY MAXIMUM DC CURRENT AT CUT-OFF VOLTAGE (A)	109	137	164	219	273	355	109	137	164	218	273	355	109	137	164	218	273	355
Q1, Q4S, Q3BP, Q5N SWITCHES (690V) CURRENT (A)	125	125	125	125	250	250	125	125	125	125	250	250	125	125	125	125	250	250

VIN/VOUT	480V/480V						480V/208V						208V/208V					
RATING AT 0.9 PF LAG.	40KVA	50KVA	60KVA	80KVA	100KVA	130KVA	40KVA	50KVA	60KVA	80KVA	100KVA	130KVA	40KVA	50KVA	60KVA	80KVA	100KVA	130KVA
INPUT VOLTAGE/ OPTIONAL BYPASS INPUT VOLTAGE	480VAC 3PH 60HZ 3W+G						480VAC 3PH 60HZ 3W+G						208VAC 3PH 60HZ 3W+G					
NOMINAL INPUT CURRENT ON UPS/ON BYPASS (A/A)	48/48	59/60	71/72	94/96	117/120	151/156	48/48	59/60	71/72	94/96	117/120	151/156	111/111	136/138	164/166	217/222	270/277	348/360
MAXIMUM INPUT CURRENT (BATTERY CHARGING) (A/A)	59	70	88	111	148	182	59	70	88	111	148	182	136	162	203	256	332	420
OUTPUT VOLTAGE	480VAC 3PH 60HZ 3 OR 4W +G						208VAC 3PH 60HZ 3 OR 4W +G						208VAC 3PH 60HZ 3 OR 4W +G					
OUTPUT CURRENT (FULL LOAD) (A/A)	48	60	72	96	120	156	111	138	166	222	277	360	111	138	166	222	277	360
BATTERY DC FLOAT VOLTAGE (MAX) (VDC)	490	490	490	490	490	490	490	490	490	490	490	490	490	490	490	490	490	490
BATTERY DC NOMINAL VOLTAGE (VDC)	432	432	432	432	432	432	432	432	432	432	432	432	432	432	432	432	432	432
BATTERY DC CURRENT AT NOMINAL VOLTAGE (A)	90	113	135	180	225	293	90	113	135	180	225	293	90	113	135	180	225	293
BATTERY MAXIMUM DC CURRENT AT CUT-OFF VOLTAGE (A)	109	137	164	219	273	355	109	137	164	218	273	355	109	137	164	218	273	355
Q1, Q4S, Q3BP, Q5N SWITCHES (690V) CURRENT (A)	125	125	125	125	250	250	125	125	125	125	250	250	125	125	125	125	250	250

THIS DRAWING AND SPECIFICATIONS HEREIN ARE THE PROPERTY OF SCHNEIDER ELECTRIC AND SHALL NOT BE COPIED, REPRODUCED OR USED IN WHOLE OR IN PART, AS THE BASIS FOR THE MANUFACTURE OR SALE OF ITEMS WITHOUT WRITTEN PERMISSION FROM SCHNEIDER ELECTRIC. THIS DRAWING IS BASED UPON LATEST AVAILABLE INFORMATION AND IS SUBJECT TO CHANGE WITHOUT NOTICE.



TITLE: GALAXY 5000 40-130kVA UPS  
Input/Output :- 480V/480V, 480V/208V, 208V/208V, 220V/220V, 600V/600V, 600V/208V ELECTRICAL DATA  
PROJECT: SUBMITTAL DRAWINGS SHEET 2 OF 2

DWG NO: 90-174700-00-SD  
DRAWN: B.KHOLOUSI/BALAMURUGAN 22-DEC-11  
ENGINEER: I.KENNEDY/ S.DAS 22-DEC-11  
APPROVED: B.SHERIDAN/F.DIOSA 22-DEC-11

REV. 1  
ANGLE PROJECTION  
N.A.