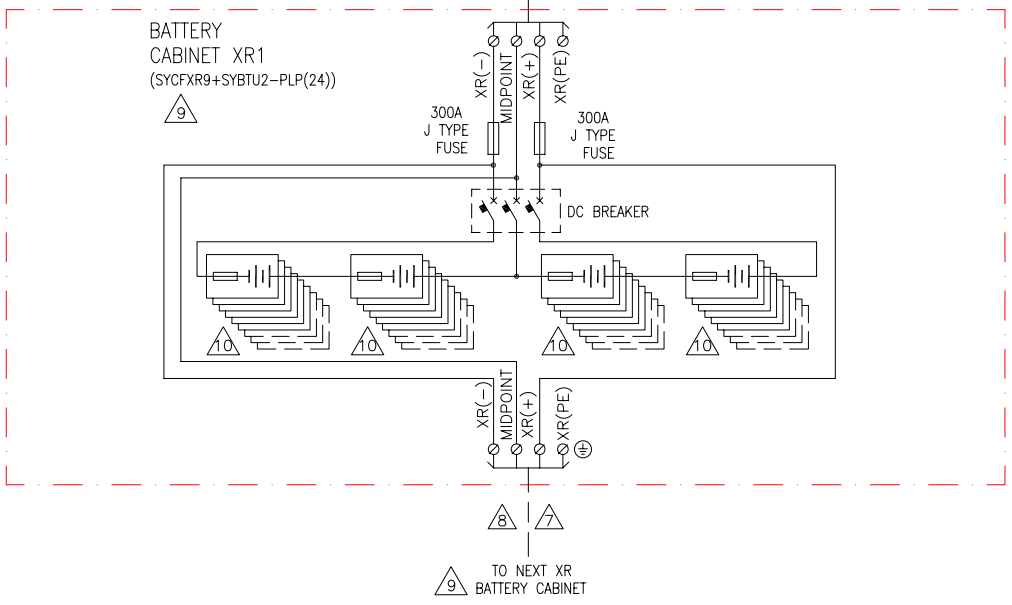


DEVICE ID	NOMINAL CURRENT	TYPE	MAKE	MODEL	ACCESSORIES
DC BREAKER	320AF	DC BREAKER, 3POLE	ABB	TN5320	1-SHUNT TRIP (120-240V AC), 1-AUX. SWITCH

DEVICE	NOMINAL CURRENT	RATED SHORT CIRCUIT CURRENT	
		WITH INPUT FUSES	WITHOUT INPUT FUSES
UPS AC IN	97A	30ka SYMMETRICAL	10ka SYMMETRICAL
UPS AC OUT	92A	30ka SYMMETRICAL	10ka SYMMETRICAL
UPS DC	176A		
BATTERY CABINET XR1	176A	25ka SYMMETRICAL	25ka SYMMETRICAL

**LEGEND:**  
 - - - - - AC CABLE - PROVIDED BY OTHERS.  
 \_\_\_\_\_ DC CABLE - PROVIDED BY OTHERS.

- NOTES:**
- INSTALLATION MUST COMPLY WITH ALL APPLICABLE LOCAL AND NATIONAL CODES.
  - PLEASE REFER TO APC PRODUCT MANUALS FOR DETAILS.
  - DRAWING DEPICTS POWER SYSTEM CONNECTIONS AND IS NOT REPRESENTATIVE OF PHYSICAL LAYOUT, PLEASE REFER TO MECHANICAL DRAWINGS FOR PHYSICAL LAYOUT.
  - 3x400/230V TN-S (PROVIDED BY OTHERS). FOR OTHER EARTHING PRINCIPLES, PLEASE CONTACT APC. RECOMMENDED UPSTREAM PROTECTION IS A MINIMUM RATING TO SUPPORT MAXIMUM CURRENT, WITHOUT SELECTIVITY. IF SELECTIVITY IS REQUIRED, PLEASE CONTACT APC.
  - ALL AC POWER CABLING IS L1,L2, L3, N, PE.
  - DUAL MAINS CONFIGURATION IS A DEFAULT. FOR SINGLE MAINS OPTION, MAINS AND BYPASS BARS HAVE TO BE CONNECTED WITH 3 CABLES PROVIDED WITH THE UNIT.
  - DC CABLING TO BE 600V RATED, 2 WIRE + GROUND, EACH CIRCUIT TO BE RUN IN SEPARATE CONDUITS, POSITIVE, NEGATIVE + GROUND.
  - CABLING PROVIDED BY OTHERS IF UPS AND BATTERY CABINETS ARE INSTALLED REMOTELY, FOR LINE-UP SOLUTION CABLING PROVIDED BY APC.
  - NUMBER OF BATTERIES AND DC NOMINAL CURRENT SHOWN IN THIS DIAGRAM PROVIDES 5 MINUTES RUN TIME. MAXIMUM 4 BATTERY ENCLOSURES MAY BE USED WITH THE SYSTEM.
  - BLOCKS SHOWN WITH DASHED (----) LINES REPRESENT AVAILABLE SPACE/SLOTS FOR ADDITIONAL POWER MODULES AND BATTERY UNITS.



THIS DRAWING AND SPECIFICATIONS HEREIN ARE THE PROPERTY OF AMERICAN POWER CONVERSION AND SHALL NOT BE COPIED, REPRODUCED OR USED IN WHOLE OR IN PART, AS THE BASIS FOR THE MANUFACTURE OR SALE OF ITEMS WITHOUT WRITTEN PERMISSION FROM APC. THIS DRAWING IS BASED UPON LATEST AVAILABLE INFORMATION AND IS SUBJECT TO CHANGE WITHOUT NOTICE.



**TITLE:** SYMMETRA PX  
 Input: 400/230V AC 3PH SINGLE/DUAL MAINS  
 Output: 400/230V AC AND 400V AC 3PH 64kW  
 SYSTEM ONE LINE DIAGRAM

<b>DWG NO:</b> SY64K160H-SD	<b>REV:</b> 0
<b>DRAWN:</b> BALAMURUGAN	18-DEC-07
<b>ENGINEER:</b> H.MATHIESEN/A.KULKARNI	18-DEC-07
<b>APPROVED:</b> C.LARSEN/S.WAGH/E.SILVA	18-DEC-07
<b>PROJECT:</b> SUBMITTAL DRAWINGS	<b>SHEET:</b> 1 OF 1
<b>PROJECTION:</b> N/A	