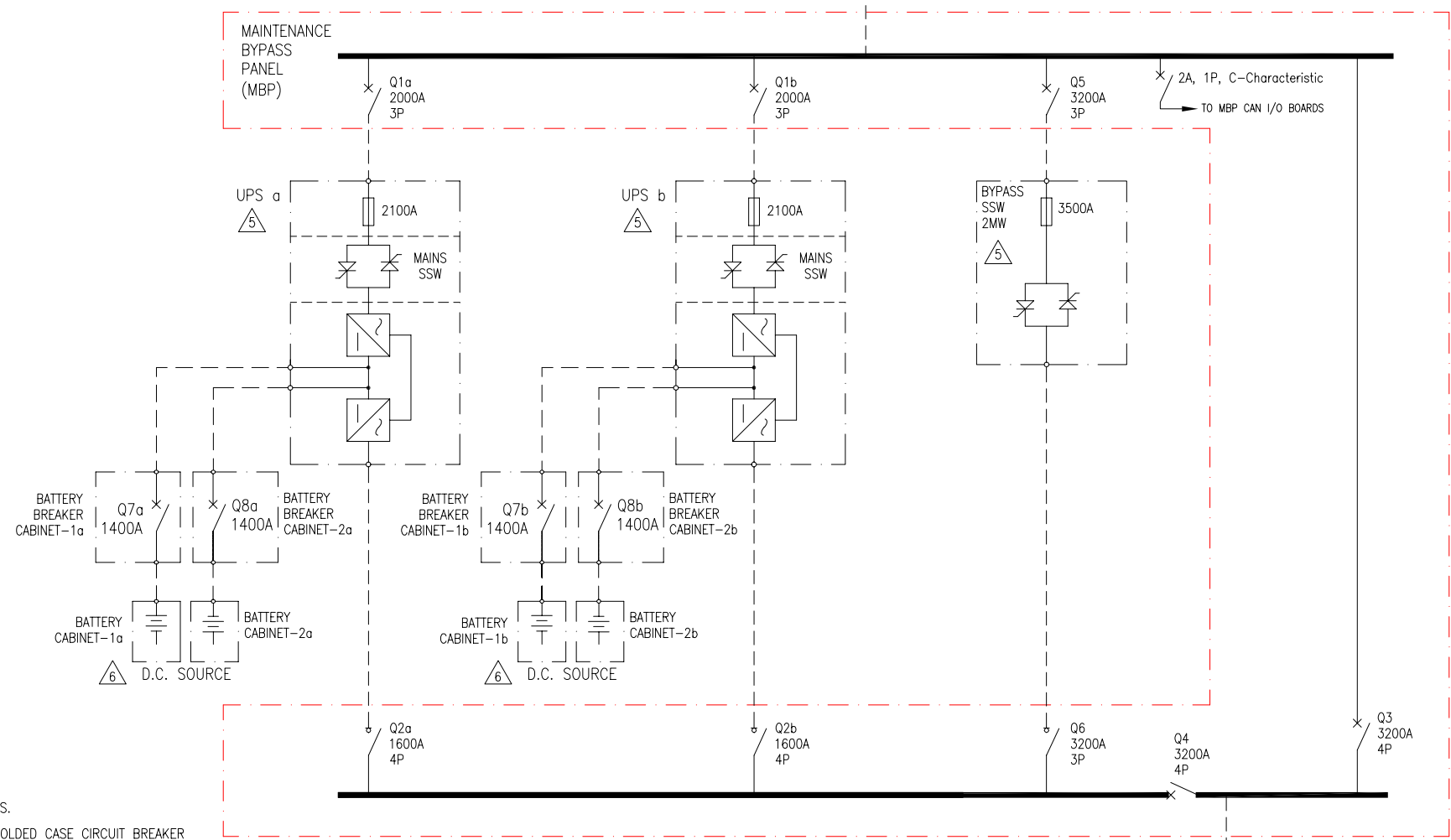



UTILITY SOURCE
 PROVIDED BY OTHERS
 380/400/415V, 50Hz
 3PH 4WIRE + GROUND



NOTES:

1. PLEASE REFER TO APC INSTALLATION GUIDE
2. Q1 TO Q6 WITH 2NO/2NC AUXILIARY CONTACTS.
3. Q7, Q8 DC RATED THERMAL MAGNETIC TRIP MOLDED CASE CIRCUIT BREAKER WITH 24VOLT DC UNDERVOLTAGE RELEASE (UVR) AND 2NO/2NC AUXILIARY CONTACTS.
4. PLEASE REFER TO THE INSTALLATION MANUAL FOR THE BREAKER SETTINGS OF Q1, Q3, Q4 & Q5.
- △ 5. UPS AND STATIC BYPASS WITHSTAND RATING (Icw)= 200kA
- △ 6. SEE BATTERY INSTALLATION INFORMATION
7. ALL AC POWER CABLING IS L1,L2,L3,N,PE.
8. UPS INPUT AND OUTPUT CONDUCTORS MUST BE IN SEPARATE CABLE RUNS.
9. DC CABLING SHOULD BE SEGREGATED FROM AC CABLING
10. POWER WIRING AND CONTROL WIRING SHOULD BE SEGREGATED.
11. AC CIRCUIT CABLE LENGTHS (INPUT AND OUTPUT) SHOULD BE EQUAL ON ALL MODULES
12. DC CIRCUIT CABLE LENGTHS SHOULD BE EQUAL ON ALL MODULES
13. - - - - - = CABLING PROVIDED BY OTHERS
14. INSTALLATION MUST COMPLY WITH ALL APPLICABLE NATIONAL AND LOCAL CODES.

THIS DRAWING AND SPECIFICATIONS HEREIN ARE THE PROPERTY OF AMERICAN POWER CONVERSION AND SHALL NOT BE COPIED, REPRODUCED OR USED IN WHOLE OR IN PART, AS THE BASIS FOR THE MANUFACTURE OR SALE OF ITEMS WITHOUT WRITTEN PERMISSION FROM APC. THIS DRAWING IS BASED UPON LATEST AVAILABLE INFORMATION AND IS SUBJECT TO CHANGE WITHOUT NOTICE.		TITLE: SYMMETRA MW 380/400/415V AC, 3PH, 2x1000kW SINGLE MAINS SYSTEM ONE LINE DIAGRAM		DWG NO: SYMF1000K2000H1C2-SD		REV. 1	
PROJECT: SUBMITTAL DRAWING		SHEET 1 OF 1		DRAWN: BALAMURUGAN		27/03/07	
				CHECKED: S WAGH		27/03/07	
				ENGINEER: S WAGH		27/03/07	



AMERICAN POWER CONVERSION
 132 FAIRGROUNDS RD
 WEST KINGSTON, RI 02892