

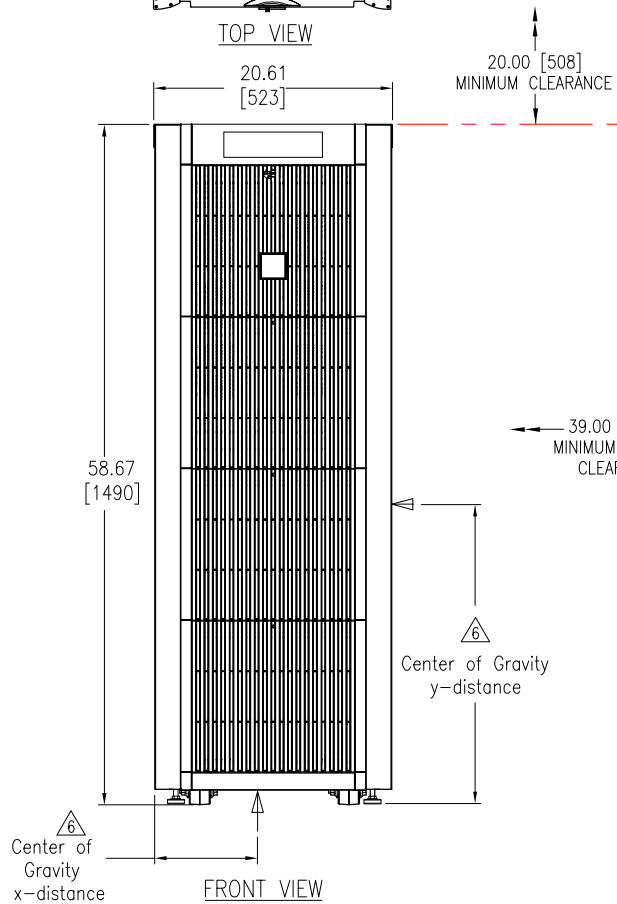
TOP VIEW

NOTES:

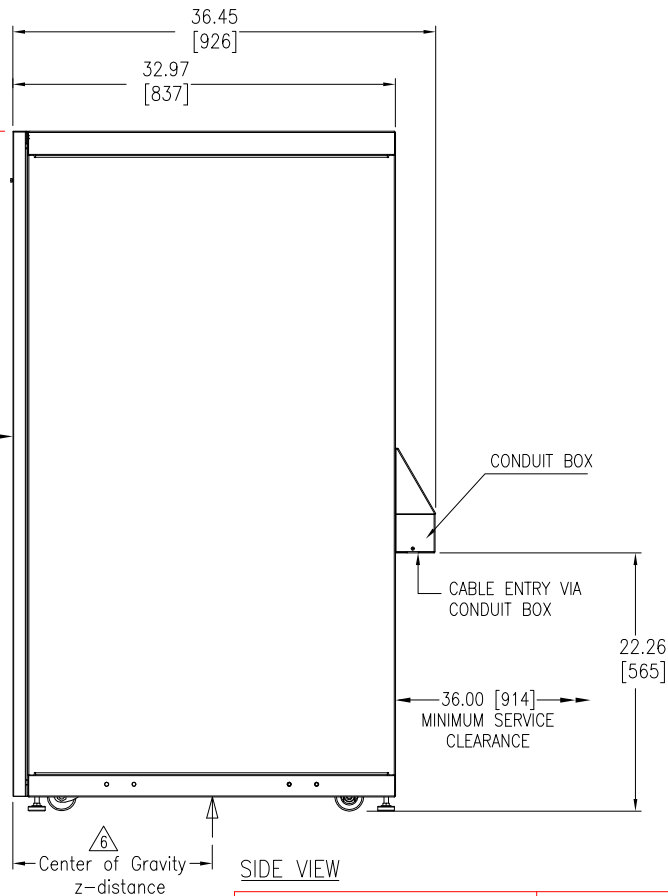
1. PLEASE REFER TO INSTALLATION MANUAL FOR DETAILS.
2. ALL DIMENSIONS ARE IN INCHES [MILLIMETERS].
3. CABLE ENTRY IS REAR OF UNIT (VIA CONDUIT BOX).
4. FRONT AND REAR SERVICE CLEARANCE, TOP COOLING CLEARANCE REQUIRED.
5. WEIGHT OF UNIT IS 1687 LBS [767 kg].
6. CENTER OF GRAVITY OF THE UNIT

| x-distance inches(mm) | y-distance inches(mm) | z-distance inches(mm) |
|--------------------------|--------------------------|--------------------------|
| 10.28 (261) | 24.02 (610) | 15.63 (397) |

7. INSTALLATION MUST COMPLY WITH ALL APPLICABLE NATIONAL AND LOCAL CODES.



FRONT VIEW



SIDE VIEW

THIS DRAWING AND SPECIFICATIONS HEREIN ARE THE PROPERTY OF AMERICAN POWER CONVERSION AND SHALL NOT BE COPIED, REPRODUCED OR USED IN WHOLE OR IN PART, AS THE BASIS FOR THE MANUFACTURE OR SALE OF ITEMS WITHOUT WRITTEN PERMISSION FROM APC. THIS DRAWING IS BASED UPON LATEST AVAILABLE INFORMATION AND IS SUBJECT TO CHANGE WITHOUT NOTICE.

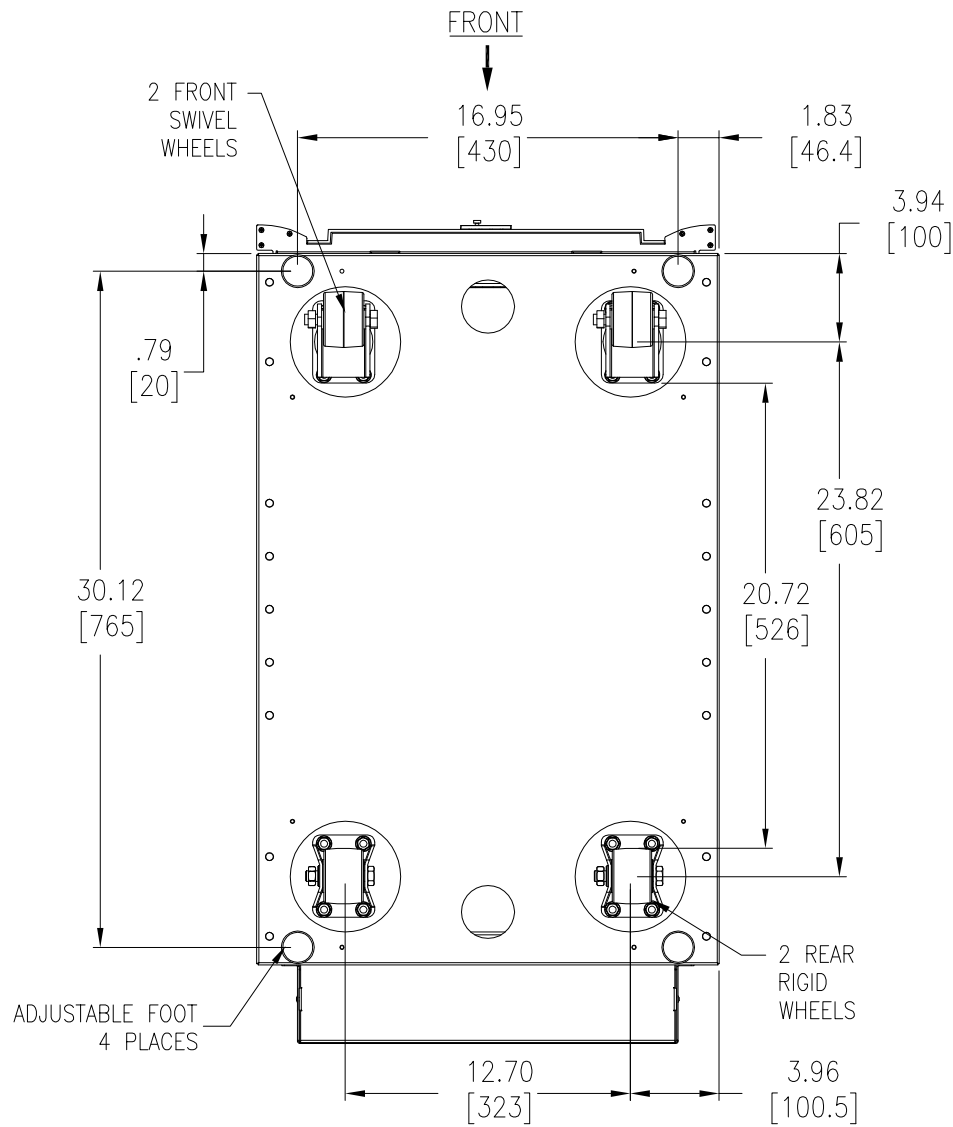
TITLE: SMART-UPS VI XR-CABINET
WITHOUT DC BREAKER
W/6 BATT. MODULES
MAIN MECHANICAL

DWG NO: SUVTXR6B6S-MM1
DRAWN BY: B ZAHN
CHECKED BY: J.RING / F.DIOSA
ENGINEER: R.HANSEN / E.SILVA

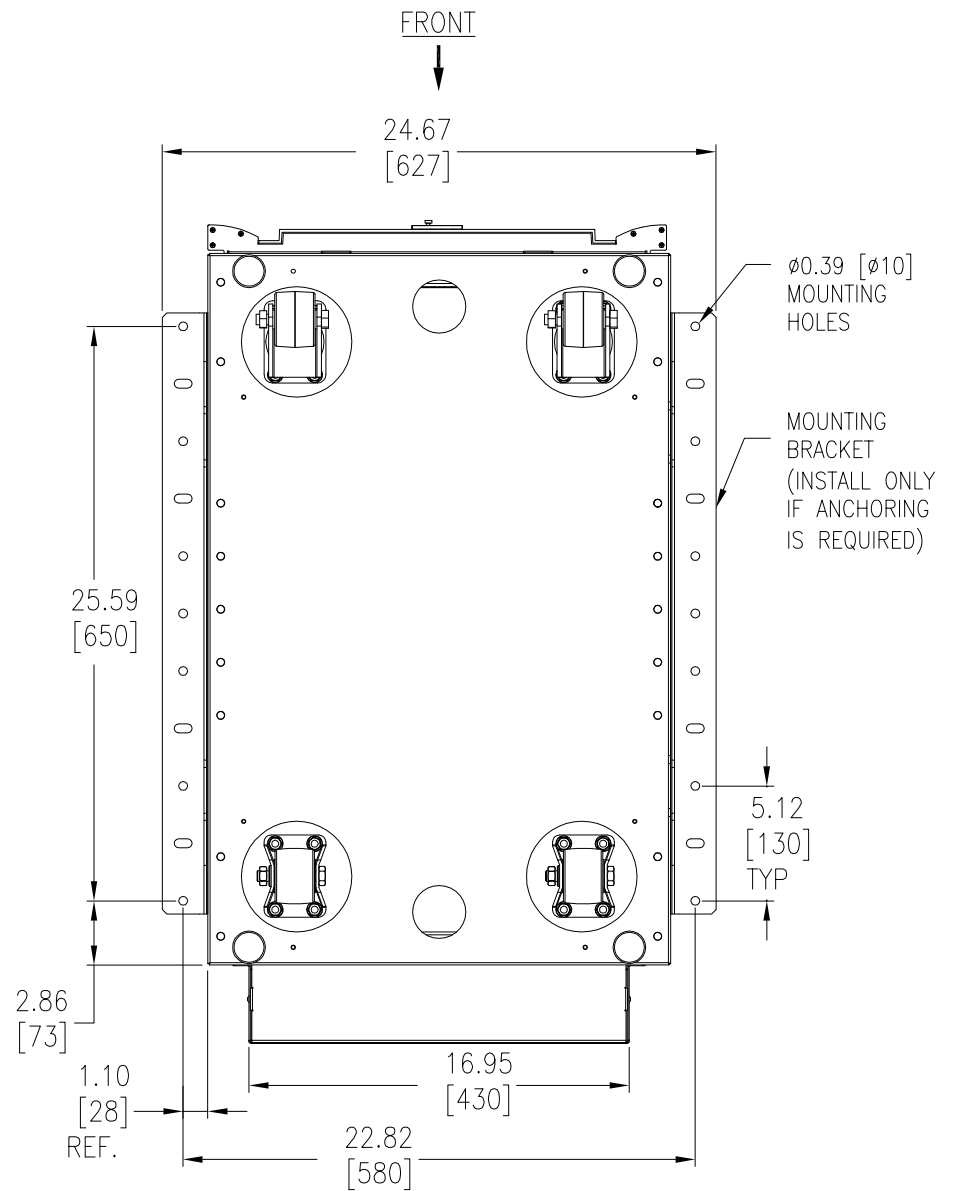
REV. 1
03/14/05
03/14/05
03/14/05



PROJECT: SUBMITTAL DRAWINGS SHEET 1 OF 3




BOTTOM VIEW

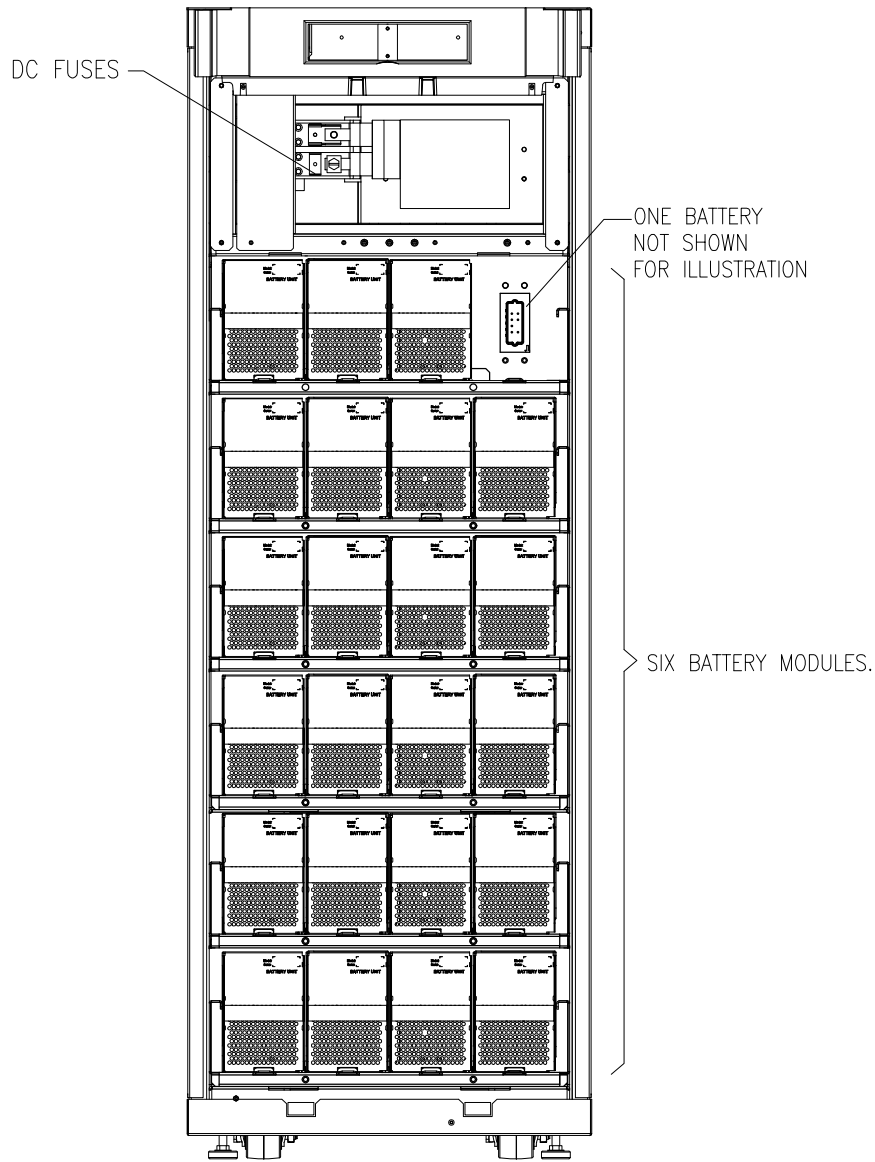


BOTTOM VIEW
WITH ANCHORING DETAIL (OPTIONAL)

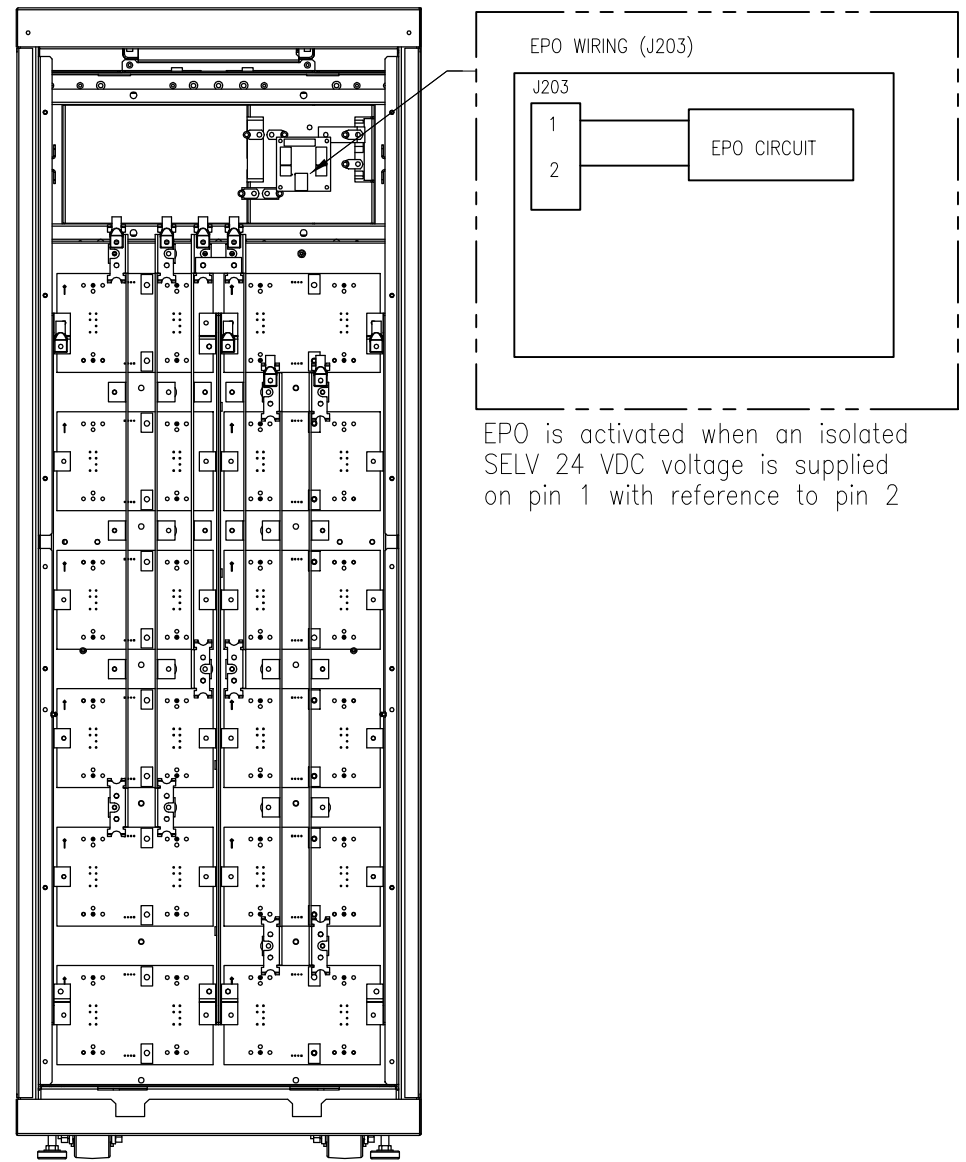
NOTES:

- PLEASE REFER TO APC PRODUCT MANUAL.
- ALL DIMENSIONS ARE IN INCHES [MILLIMETERS].
- INSTALLATION MUST COMPLY WITH ALL APPLICABLE NATIONAL AND LOCAL CODES.

| | | | | |
|---|--|------------------------------|------------------------------|--|
| THIS DRAWING AND SPECIFICATIONS HEREIN ARE THE PROPERTY OF AMERICAN POWER CONVERSION AND SHALL NOT BE COPIED, REPRODUCED OR USED IN WHOLE OR IN PART, AS THE BASIS FOR THE MANUFACTURE OR SALE OF ITEMS WITHOUT WRITTEN PERMISSION FROM APC. THIS DRAWING IS BASED UPON LATEST AVAILABLE INFORMATION AND IS SUBJECT TO CHANGE WITHOUT NOTICE. | TITLE: SMART-UPS VI XR-CABINET WITHOUT DC BREAKER W/6 BATT. MODULES BOTTOM VIEW | DWG NO: SUVTXR6B6S-MM2 | REV. 1 |  AMERICAN POWER CONVERSION 132 FARGROUNDS RD WEST KINGSTON, RI 02892 |
| | PROJECT: SUBMITTAL DRAWINGS SHEET 2 OF 3 | DRAWN BY: B ZAHN | CHECKED BY: J.RING / F.DIOSA | |
| | | ENGINEER: R.HANSEN / E.SILVA | 03/14/05 | |




FRONT VIEW
PANEL REMOVED



REAR VIEW
PANEL REMOVED

NOTES:

1. PLEASE REFER TO APC PRODUCT MANUAL.
2. ALL DIMENSIONS ARE IN INCHES [MILLIMETERS].
3. FOR COMMUNICATION CABLES USE ONLY 28-16AWG COPPER WIRE RATED MINIMUM 250V.
4. INSTALLATION MUST COMPLY WITH ALL APPLICABLE NATIONAL AND LOCAL CODES.

| | | | | | | | | |
|---|--|---|--|------------------------------|--|----------|--|--|
| THIS DRAWING AND SPECIFICATIONS HEREIN ARE THE PROPERTY OF AMERICAN POWER CONVERSION AND SHALL NOT BE COPIED, REPRODUCED OR USED IN WHOLE OR IN PART, AS THE BASIS FOR THE MANUFACTURE OR SALE OF ITEMS WITHOUT WRITTEN PERMISSION FROM APC. THIS DRAWING IS BASED UPON LATEST AVAILABLE INFORMATION AND IS SUBJECT TO CHANGE WITHOUT NOTICE. | | TITLE: SMART-UPS VI XR-CABINET WITHOUT DC BREAKER W/6 BATT. MODULES INTERNAL FRONT & REAR VIEW | | DWG NO: SUVTXR6B6S-ME1 | | REV. 1 | |  AMERICAN POWER CONVERSION 132 FARGROUNDS RD WEST KINGSTON, RI 02892 |
| PROJECT: SUBMITTAL DRAWINGS | | SHEET 3 OF 3 | | DRAWN BY: B ZAHN | | 03/14/05 | | |
| | | | | CHECKED BY: J.RING / F.DIOSA | | 03/14/05 | | |
| | | | | ENGINEER: R.HANSEN / E.SILVA | | 03/14/05 | | |