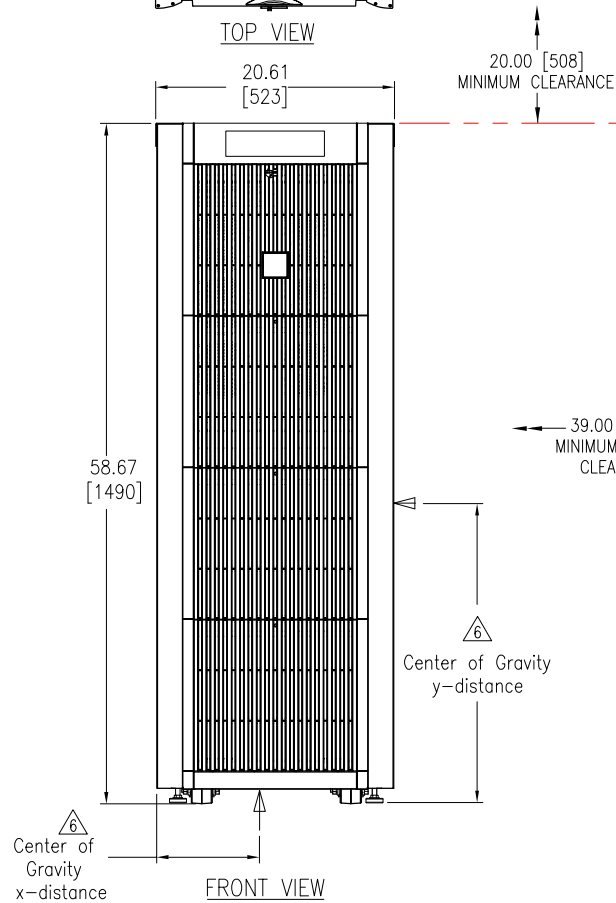


TOP VIEW



FRONT VIEW

NOTES:

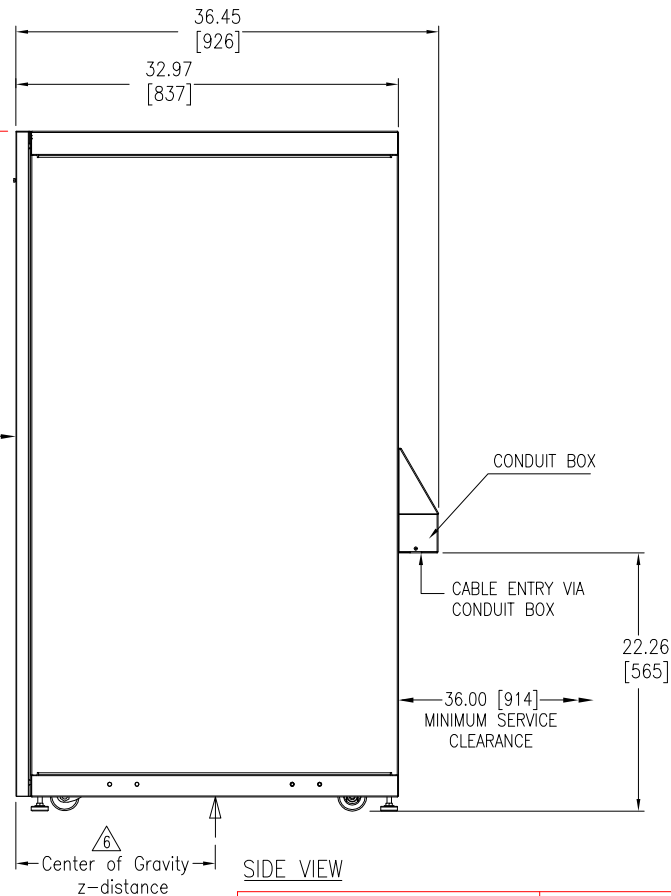
1. PLEASE REFER TO INSTALLATION MANUAL FOR DETAILS.
2. ALL DIMENSIONS ARE IN INCHES [MILLIMETERS].
3. CABLE ENTRY IS REAR OF UNIT (VIA CONDUIT BOX).
4. FRONT AND REAR SERVICE CLEARANCE, TOP COOLING CLEARANCE REQUIRED.
5. REFER TO THE TABLE FOR WEIGHT OF THE UNIT.
- △ 6. CENTER OF GRAVITY OF THE UNIT

No. of Battery Modules	x-distance inches(mm)	y-distance inches(mm)	z-distance inches(mm)
Two	10.28 (261)	19.69 (500)	15.87 (403)
Three	10.28 (261)	19.53 (496)	15.79 (401)
Four	10.28 (261)	20.47 (520)	15.71 (399)
Five	10.28 (261)	22.05 (560)	15.67 (398)
Six	10.28 (261)	24.02 (610)	15.63 (397)

7. INSTALLATION MUST COMPLY WITH ALL APPLICABLE NATIONAL AND LOCAL CODES.

WEIGHT DETAILS

SKU	Number of Battery modules	Weight
		LBS (kg)
SUVTBXR2B6S	2	878 (399)
SUVTBXR2B6S+(1)SYBT4	3	1080 (491)
SUVTBXR2B6S+(2)SYBT4	4	1283 (583)
SUVTBXR2B6S+(3)SYBT4	5	1485 (675)
SUVTBXR2B6S+(4)SYBT4	6	1687 (767)



SIDE VIEW

THIS DRAWING AND SPECIFICATIONS HEREIN ARE THE PROPERTY OF AMERICAN POWER CONVERSION AND SHALL NOT BE COPIED, REPRODUCED OR USED IN WHOLE OR IN PART, AS THE BASIS FOR THE MANUFACTURE OR SALE OF ITEMS WITHOUT WRITTEN PERMISSION FROM APC. THIS DRAWING IS BASED UPON LATEST AVAILABLE INFORMATION AND IS SUBJECT TO CHANGE WITHOUT NOTICE.

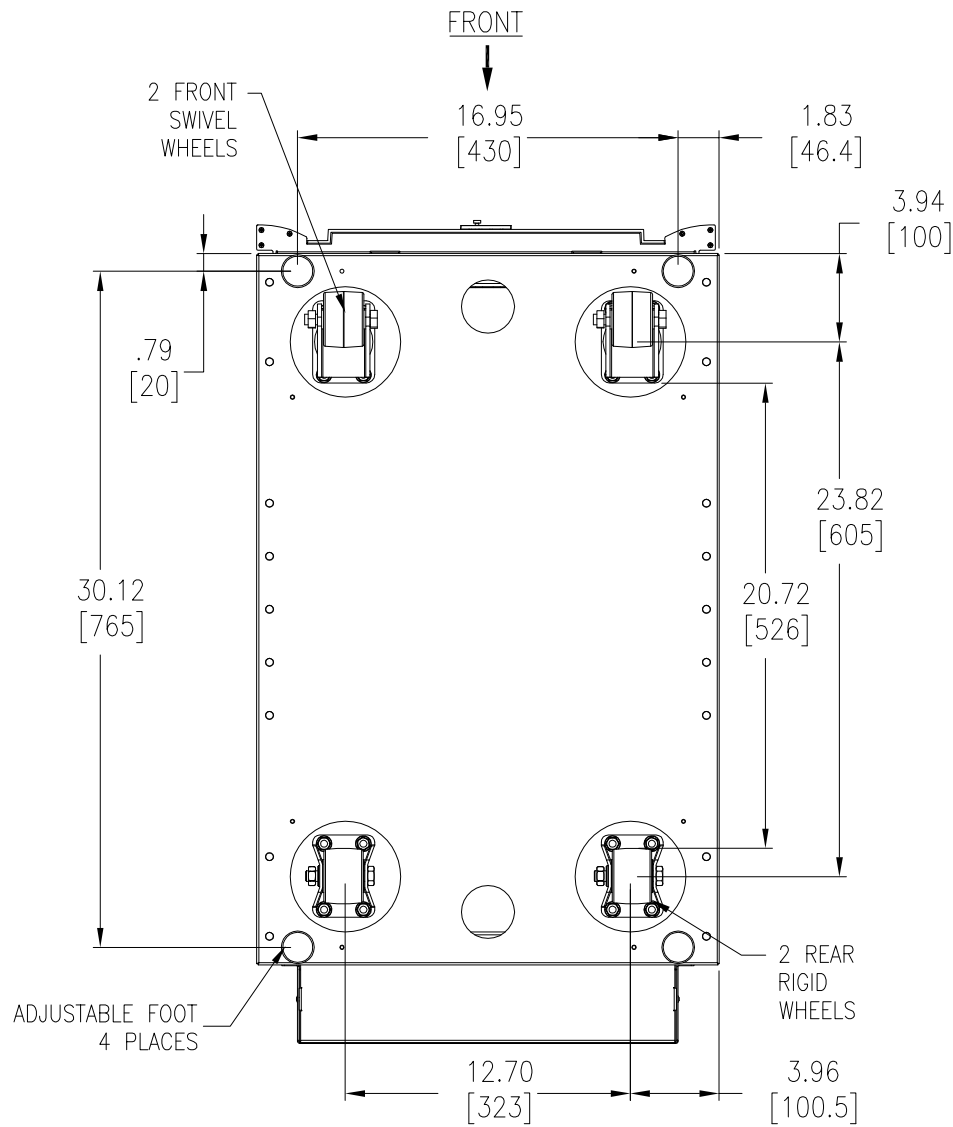
TITLE: SMART-UPS VT XR-CABINET WITH DC BREAKER W/2 BATT. MODULE EXP. TO 6 MAIN MECHANICAL

DWG NO: SUVTBXR2B6S-MM1  
 DRAWN BY: B ZAHN  
 CHECKED BY: J.RING / F.DIOSA  
 ENGINEER: R.HANSEN / E.SILVA

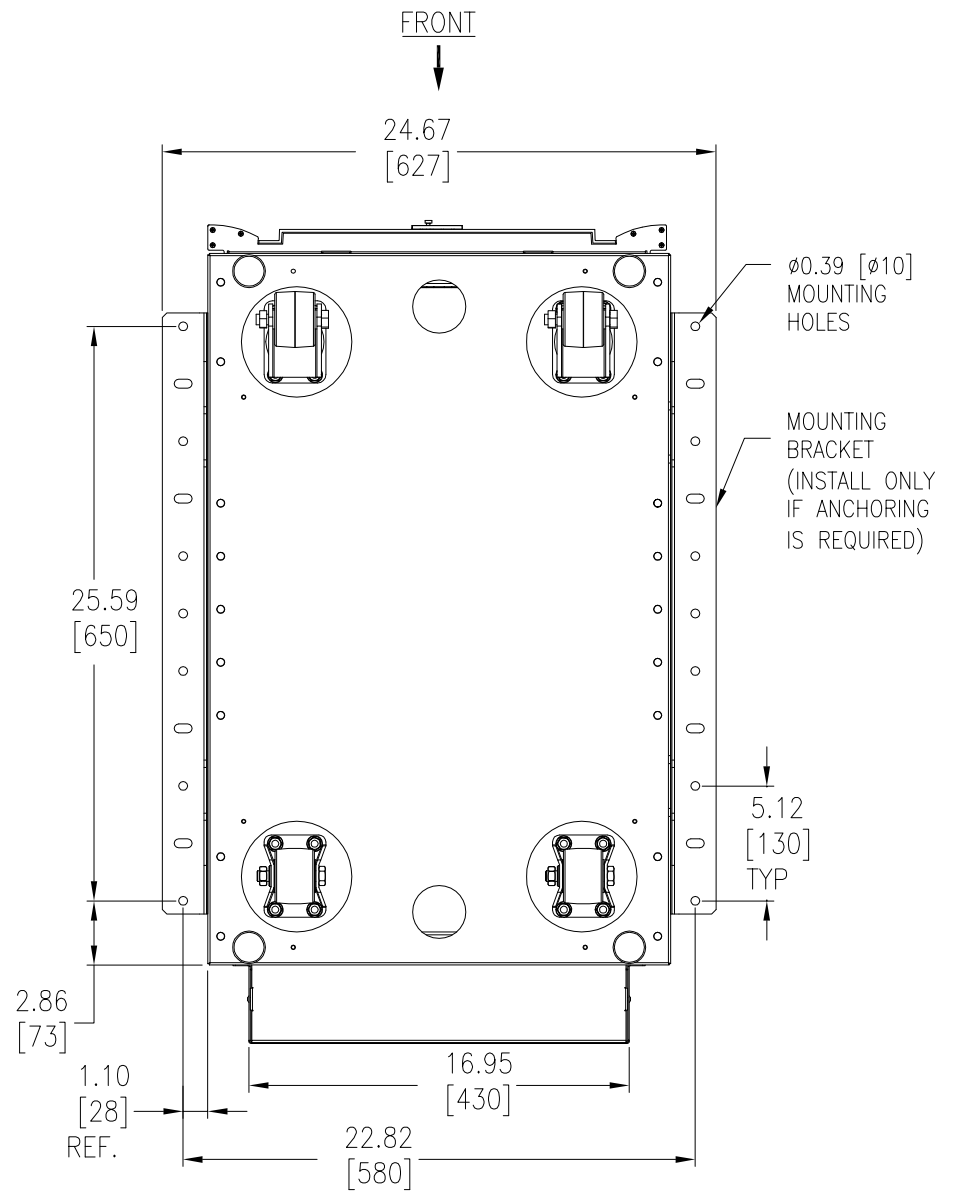
REV. 1  
 03/14/05  
 03/14/05  
 03/14/05



PROJECT: SUBMITTAL DRAWINGS SHEET 1 OF 3




BOTTOM VIEW

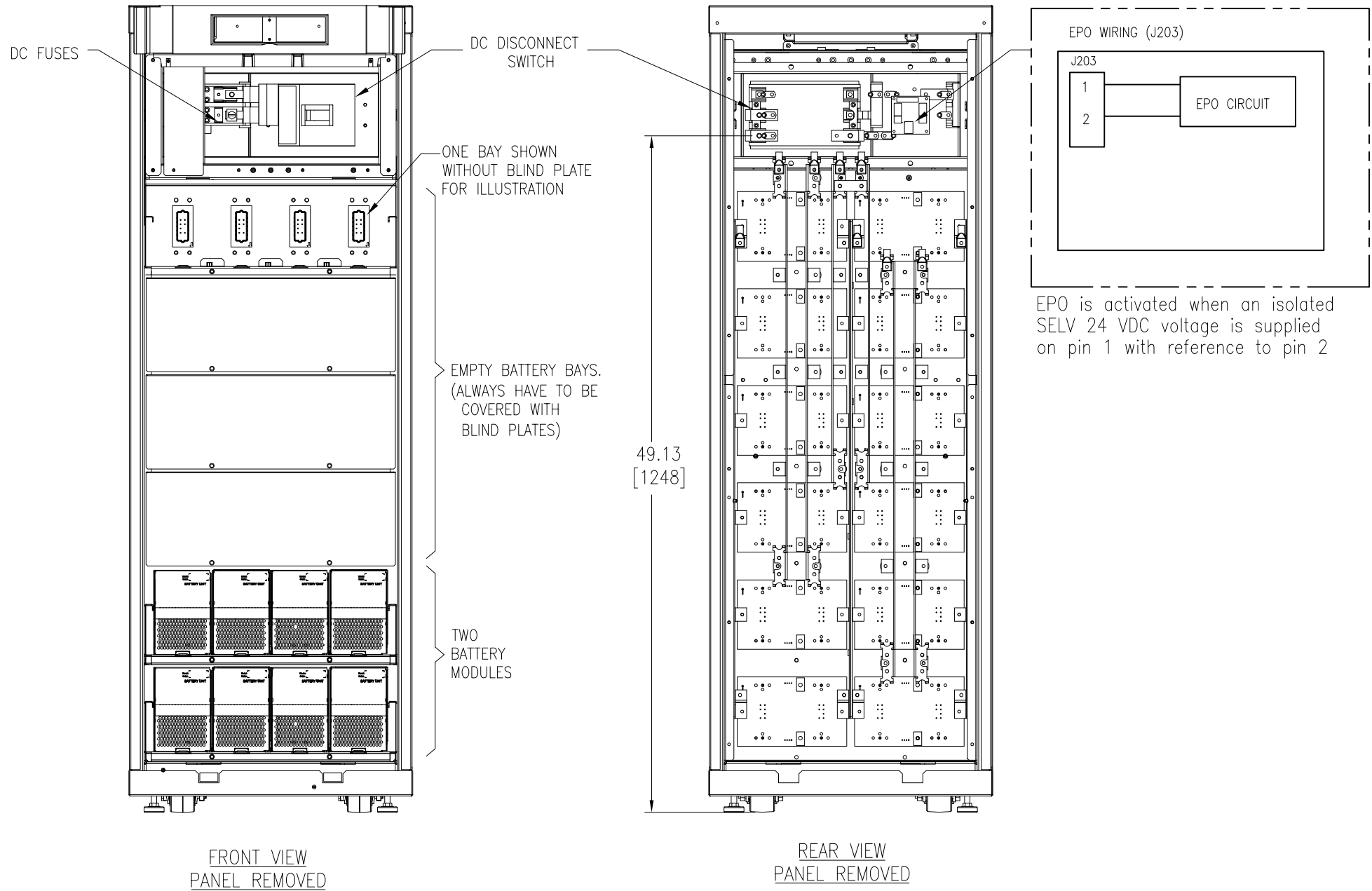


BOTTOM VIEW  
WITH ANCHORING DETAIL (OPTIONAL)

NOTES:

- PLEASE REFER TO APC PRODUCT MANUAL.
- ALL DIMENSIONS ARE IN INCHES [MILLIMETERS].
- INSTALLATION MUST COMPLY WITH ALL APPLICABLE NATIONAL AND LOCAL CODES.

<small>THIS DRAWING AND SPECIFICATIONS HEREIN ARE THE PROPERTY OF AMERICAN POWER CONVERSION AND SHALL NOT BE COPIED, REPRODUCED OR USED IN WHOLE OR IN PART, AS THE BASIS FOR THE MANUFACTURE OR SALE OF ITEMS WITHOUT WRITTEN PERMISSION FROM APC. THIS DRAWING IS BASED UPON LATEST AVAILABLE INFORMATION AND IS SUBJECT TO CHANGE WITHOUT NOTICE.</small>	<small>TITLE: SMART-UPS VI XR-CABINET WITH DC BREAKER W/2 BATT. MODULE EXP. TO 6 BOTTOM VIEW</small>	<small>DWG NO: SUVTBXR2B6S-MM2</small>	<small>REV. 1</small>	 <small>AMERICAN POWER CONVERSION 132 FARGROUNDS RD WEST KINGSTON, RI 02892</small>	
	<small>PROJECT: SUBMITTAL DRAWINGS</small>	<small>SHEET 2 OF 3</small>	<small>DRAWN BY: B ZAHN</small>		<small>03/14/05</small>
	<small>ENGINEER: R.HANSEN / E.SILVA</small>	<small>CHECKED BY: J.RING / F.DIOSA</small>	<small>03/14/05</small>		<small>03/14/05</small>



NOTES:

1. PLEASE REFER TO APC PRODUCT MANUAL.
2. ALL DIMENSIONS ARE IN INCHES [MILLIMETERS].
3. FOR COMMUNICATION CABLES USE ONLY 28-16AWG COPPER WIRE RATED MINIMUM 250V.
4. INSTALLATION MUST COMPLY WITH ALL APPLICABLE NATIONAL AND LOCAL CODES.

THIS DRAWING AND SPECIFICATIONS HEREIN ARE THE PROPERTY OF AMERICAN POWER CONVERSION AND SHALL NOT BE COPIED, REPRODUCED OR USED IN WHOLE OR IN PART, AS THE BASIS FOR THE MANUFACTURE OR SALE OF ITEMS WITHOUT WRITTEN PERMISSION FROM APC. THIS DRAWING IS BASED UPON LATEST AVAILABLE INFORMATION AND IS SUBJECT TO CHANGE WITHOUT NOTICE.

TITLE: SMART-UPS VI XR-CABINET WITH DC BREAKER  
W/2 BATT. MODULE EXP. TO 6 INTERNAL FRONT & REAR VIEW  
PROJECT: SUBMITTAL DRAWINGS SHEET 3 OF 3

DWG NO:	SUVTBXR2B6S-ME1	REV.	1
DRAWN BY:	B ZAHN		03/14/05
CHECKED BY:	J.RING / F.DIOSA		03/14/05
ENGINEER:	R.HANSEN / E.SILVA		03/14/05

