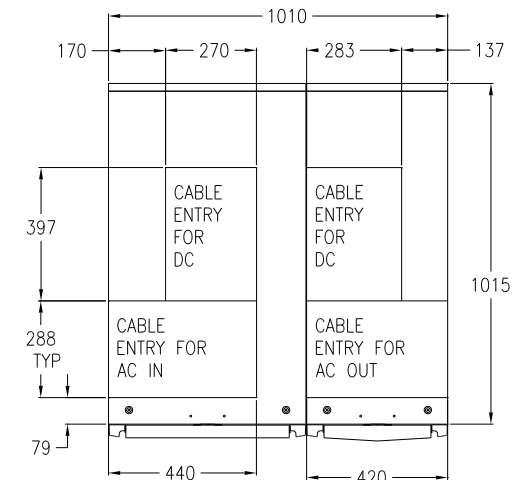
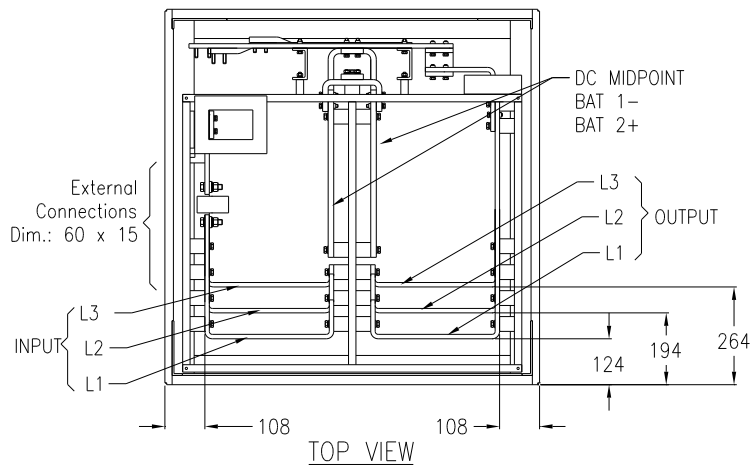
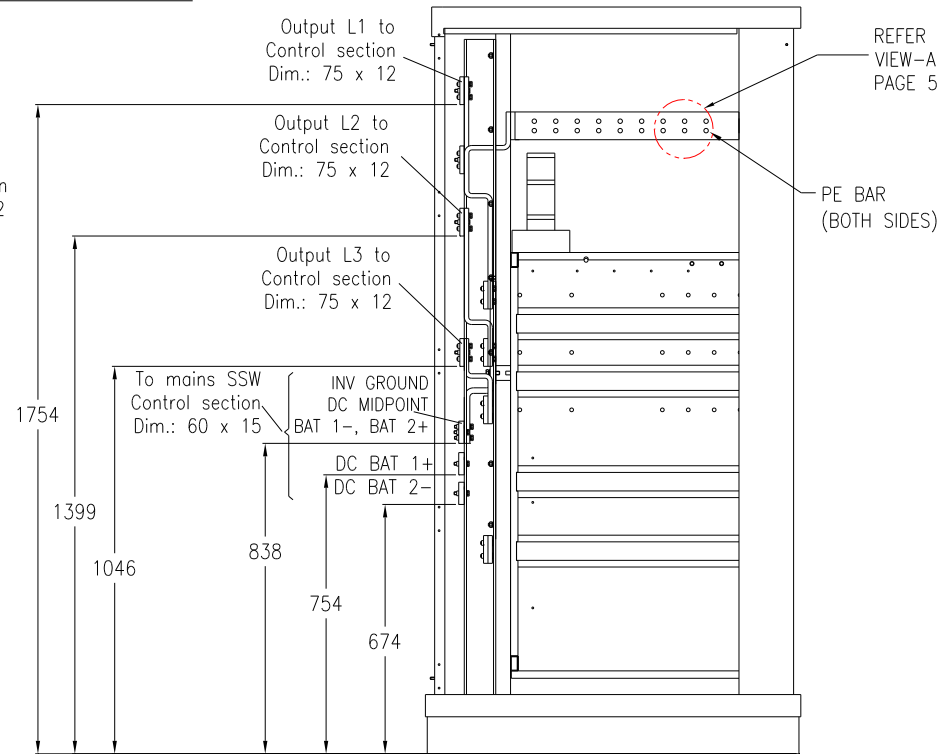
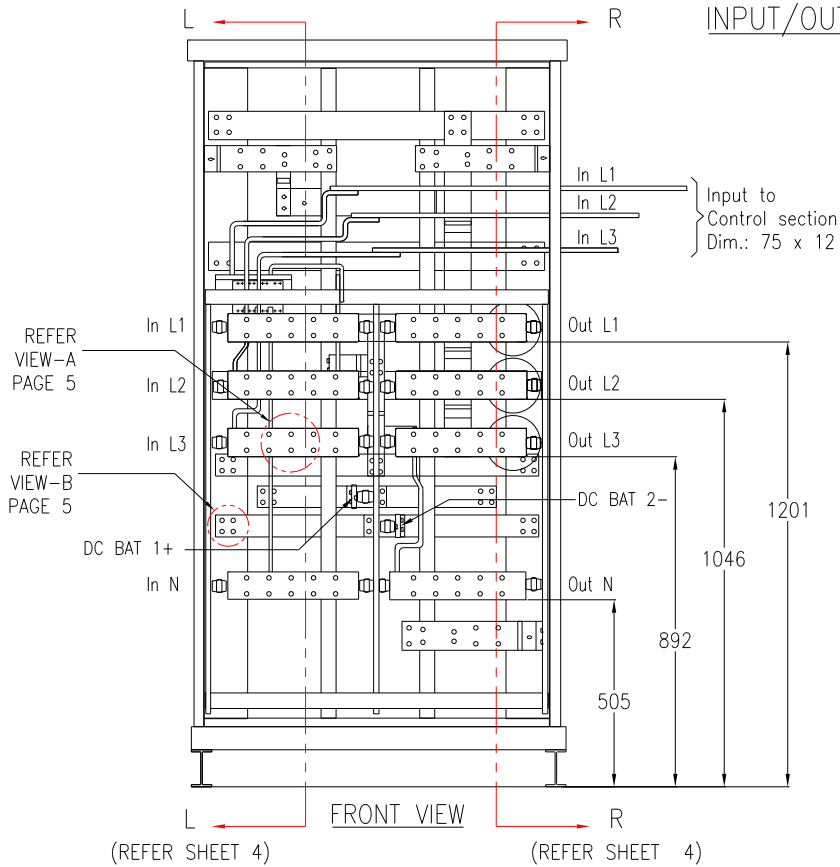


- NOTES:**
1. ALL DATA IN THIS DRAWING PROVIDED FOR FULLY POPULATED UNIT
 2. PLEASE REFER TO INSTALLATION GUIDE
 3. ALL DIMENSIONS ARE IN MILLIMETERS
 4. WEIGHT

	WITH PMs	WITHOUT PMs
INVERTER SECTION	3990kg	3015kg
IN/OUT SECTION	480kg	480kg
SSW	610kg	610kg
TOTAL WEIGHT	5080kg	4105kg
 5. CABLE ENTRY IS TOP OR BOTTOM OF UNIT.
 6. INSTALLATION MUST COMPLY WITH NATIONAL AND LOCAL ELECTRICAL REGULATIONS.

THIS DRAWING AND SPECIFICATIONS HEREIN ARE THE PROPERTY OF AMERICAN POWER CONVERSION AND SHALL NOT BE COPIED, REPRODUCED OR USED IN WHOLE OR IN PART, AS THE BASIS FOR THE MANUFACTURE OR SALE OF ITEMS WITHOUT WRITTEN PERMISSION FROM APC. THIS DRAWING IS BASED UPON LATEST AVAILABLE INFORMATION AND IS SUBJECT TO CHANGE WITHOUT NOTICE.	TITLE: SYMMETRA MW UPS 400V, 3PH, 1000KW CONFIGURATION-II, RIGHT HAND MAIN MECHANICAL	DWG NO: SYMF1000KHR-MM1 REV: 3	PROJECTION 		
	PROJECT: SUBMITTAL DRAWING SHEET 1 OF 9	DRAWN: C.KRISHNA CHECKED: B.H.NIELSEN/S.WAGH ENGINEER: C.LARSEN/S.WAGH			26/10/06 26/10/06 26/10/06
	132 FAIRGROUNDS RD WEST KINGSTON, RI 02892				

INPUT/OUTPUT CABINET



NOTES:

1. ALL DATA IN THIS DRAWING PROVIDED FOR FULLY POPULATED UNIT
2. PLEASE REFER TO INSTALLATION GUIDE
3. CABLE ENTRY IS TOP OR BOTTOM OF UNIT.
4. SOME STRUCTURAL DETAILS AND MOUNTING BRACKETS HAVE BEEN OMITTED FOR CLARITY.
5. ALL DIMENSIONS ARE IN MILLIMETERS
6. INSTALLATION MUST COMPLY WITH NATIONAL AND LOCAL ELECTRICAL REGULATIONS.

THIS DRAWING AND SPECIFICATIONS HEREIN ARE THE PROPERTY OF AMERICAN POWER CONVERSION AND SHALL NOT BE COPIED, REPRODUCED OR USED IN WHOLE OR IN PART, AS THE BASIS FOR THE MANUFACTURE OR SALE OF ITEMS WITHOUT WRITTEN PERMISSION FROM APC. THIS DRAWING IS BASED UPON LATEST AVAILABLE INFORMATION AND IS SUBJECT TO CHANGE WITHOUT NOTICE.

TITLE: SYMNETRA MW UPS
400V, 3PH, 1000KW
CONFIGURATION-II, RIGHT HAND
INTERNAL VIEWS-INPUT OUTPUT CABINET

PROJECT: SUBMITTAL DRAWING SHEET 3 OF 9

DWG NO: SYMF1000KHR-ME1

REV: 2

DRAWN: C.KRISHNA 26/10/06

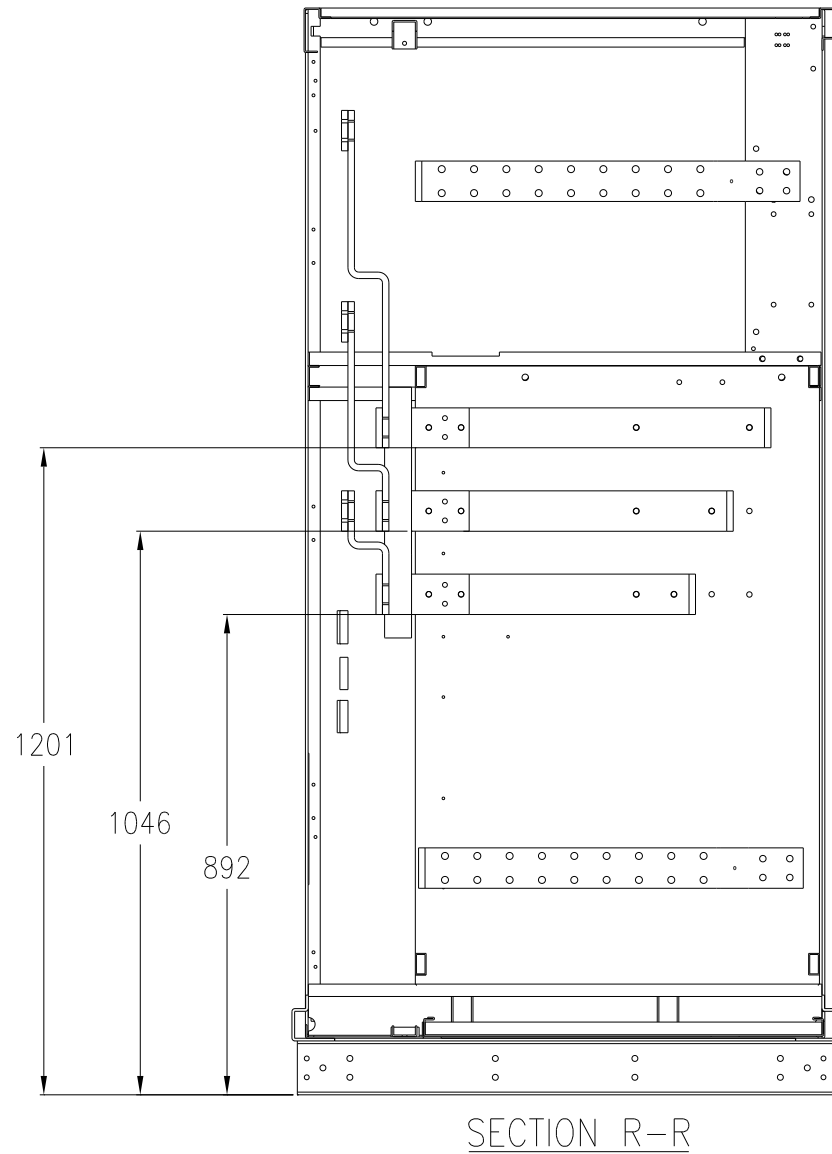
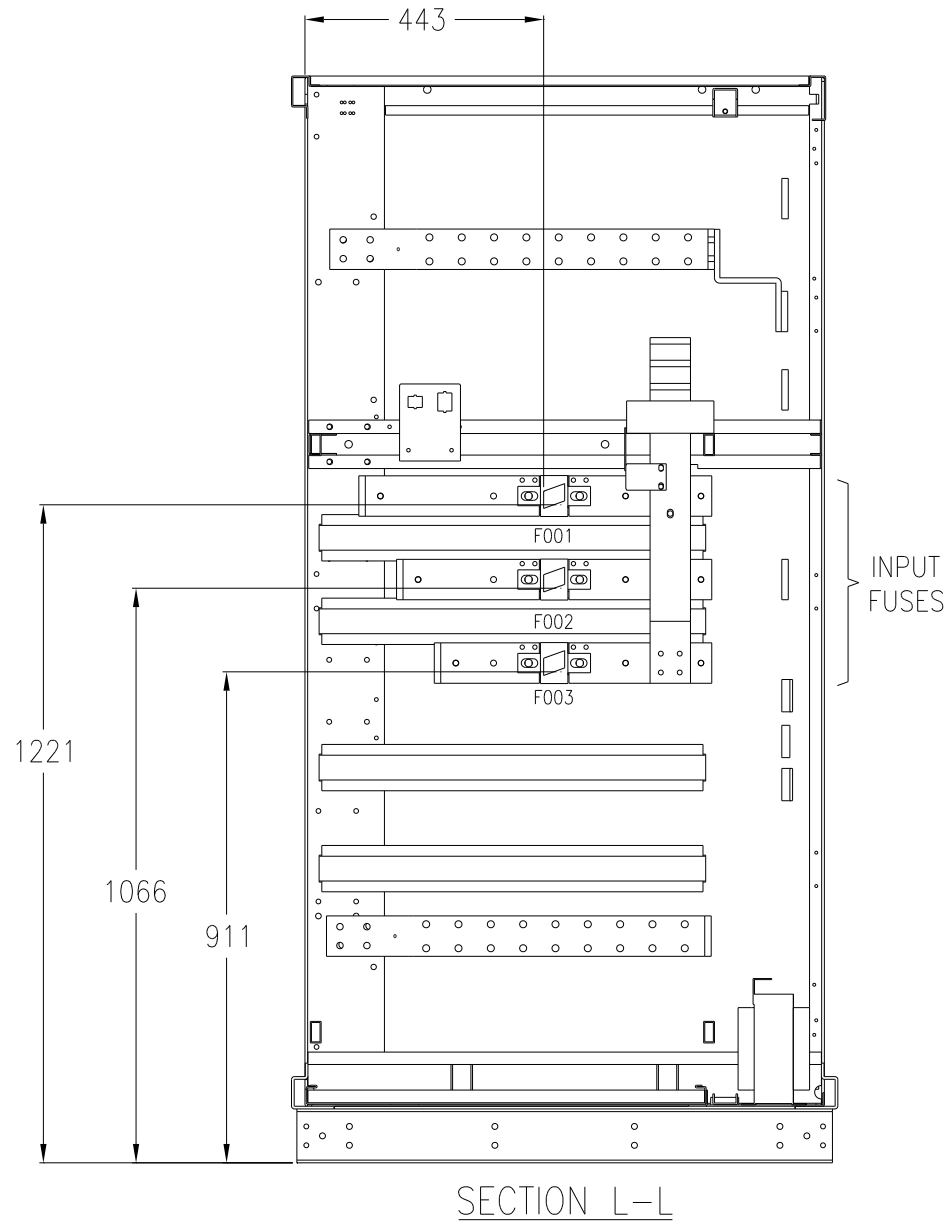
CHECKED: B.H.NIELSEN/S.WAGH 26/10/06

ENGINEER: C.LARSEN/S.WAGH 26/10/06

PROJECTION

APC[®]
AMERICAN POWER CONVERSION
132 FAIRGROUNDS RD
WEST KINGSTON, RI 02892

INPUT/OUTPUT CABINET



NOTES:

1. ALL DATA IN THIS DRAWING PROVIDED FOR FULLY POPULATED UNIT
2. PLEASE REFER TO APC PRODUCT MANUAL.
3. ALL DIMENSIONS ARE IN MILLIMETERS
4. INPUT FUSE RATING: 2100A (SEMICONDUCTOR TYPE)
5. INSTALLATION MUST COMPLY WITH NATIONAL AND LOCAL ELECTRICAL REGULATIONS.

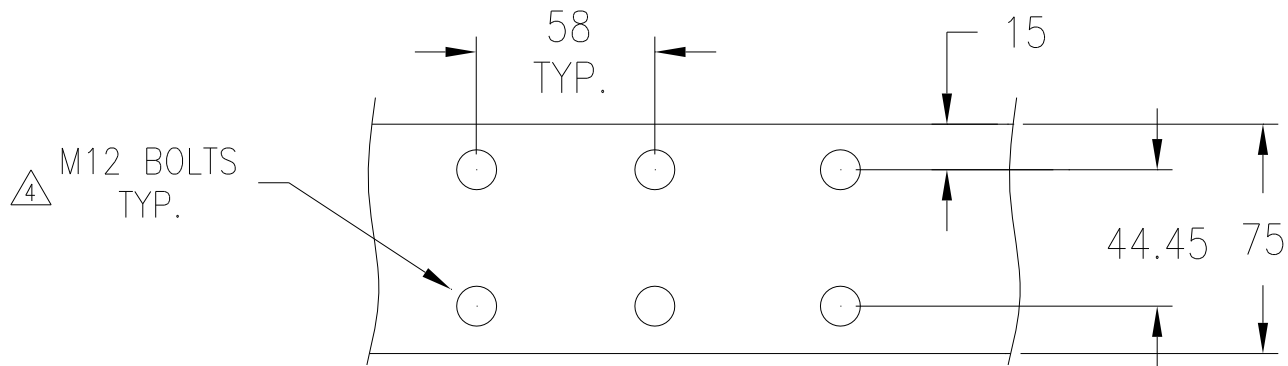
THIS DRAWING AND SPECIFICATIONS HEREIN ARE THE PROPERTY OF AMERICAN POWER CONVERSION AND SHALL NOT BE COPIED, REPRODUCED OR USED IN WHOLE OR IN PART, AS THE BASIS FOR THE MANUFACTURE OR SALE OF ITEMS WITHOUT WRITTEN PERMISSION FROM APC. THIS DRAWING IS BASED UPON LATEST AVAILABLE INFORMATION AND IS SUBJECT TO CHANGE WITHOUT NOTICE.

TITLE: SYMMETRA MW UPS
400V, 3PH, 1000kW
CONFIGURATION-II, RIGHT HAND
INTERNAL SECTIONS-INPUT OUTPUT CABINET
PROJECT: SUBMITTAL DRAWING SHEET 4 OF 9

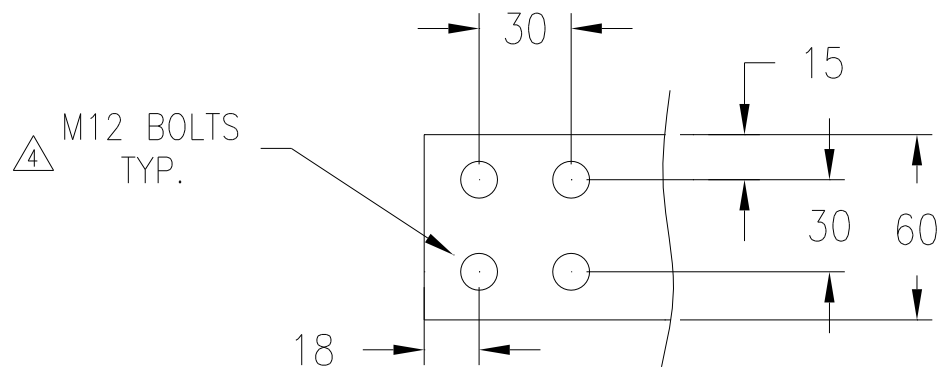
DWG NO:	SYMF1000KHR-ME2	REV:	2
DRAWN:	C.KRISHNA	26/10/06	
CHECKED:	B.H.NIELSEN/S.WAGH	26/10/06	
ENGINEER:	C.LARSEN/S.WAGH	26/10/06	

PROJECTION





VIEW A (ENLARGED)
INPUT/OUTPUT, PE BUS DETAIL



VIEW B (ENLARGED)
DC BUS DETAIL

NOTES:

1. ALL DATA IN THIS DRAWING PROVIDED FOR FULLY POPULATED UNIT
2. PLEASE REFER TO APC PRODUCT MANUAL.
3. ALL DIMENSIONS ARE IN MILLIMETERS
- △ 4. BOLTS AND NUTS ARE PROVIDED BY APC
5. INSTALLATION MUST COMPLY WITH NATIONAL AND LOCAL ELECTRICAL REGULATIONS.

THIS DRAWING AND SPECIFICATIONS HEREIN ARE THE PROPERTY OF AMERICAN POWER CONVERSION AND SHALL NOT BE COPIED, REPRODUCED OR USED IN WHOLE OR IN PART, AS THE BASIS FOR THE MANUFACTURE OR SALE OF ITEMS WITHOUT WRITTEN PERMISSION FROM APC. THIS DRAWING IS BASED UPON LATEST AVAILABLE INFORMATION AND IS SUBJECT TO CHANGE WITHOUT NOTICE.

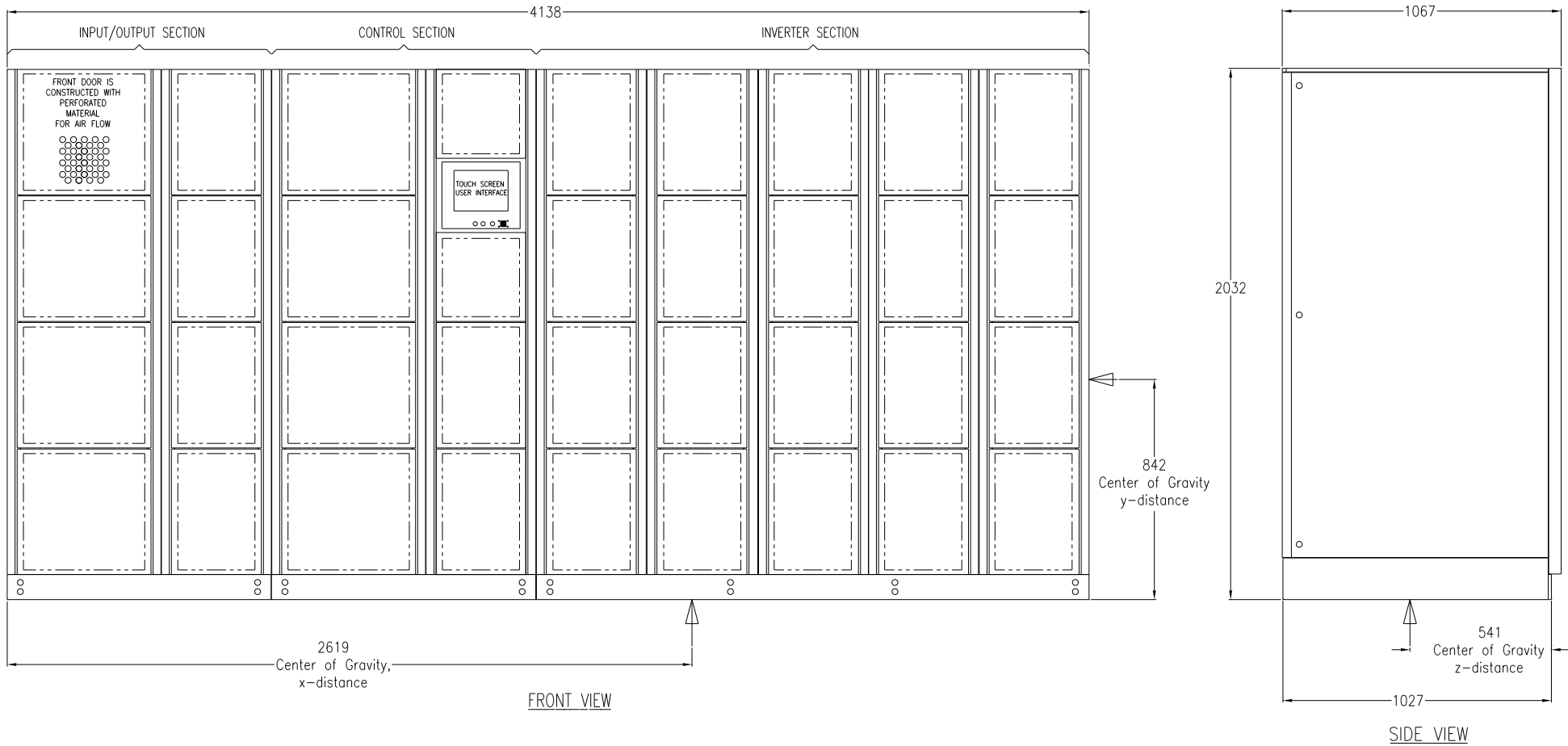
TITLE: SYMMETRA MW UPS
400V, 3PH, 1000kW
CONFIGURATION-II, RIGHT HAND
BUS DETAILS
PROJECT: SUBMITTAL DRAWING SHEET 5 OF 9

DWG NO: SYMF1000KHR-ME3
DRAWN: C.KRISHNA
CHECKED: B.H.NIELSEN/S.WAGH
ENGINEER: C.LARSEN/S.WAGH
26/10/06
26/10/06
26/10/06

REV. -
PROJECTION



CENTER OF GRAVITY FOR ASSEMBLY

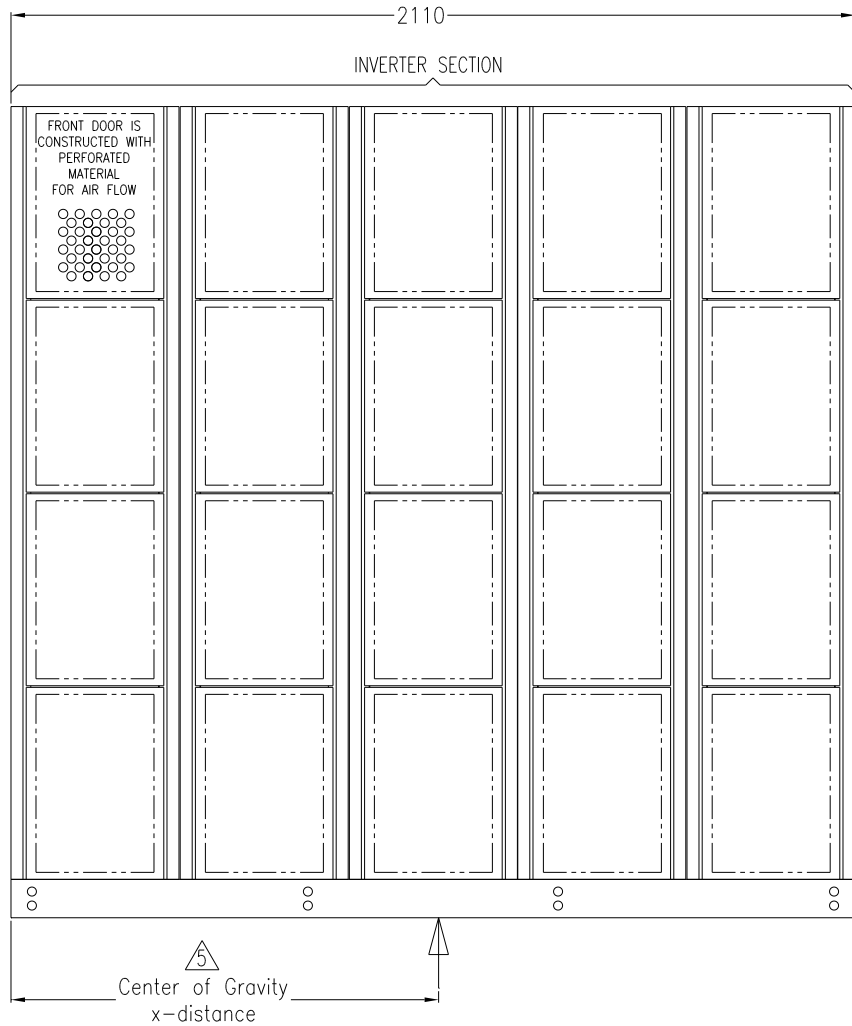


NOTES:

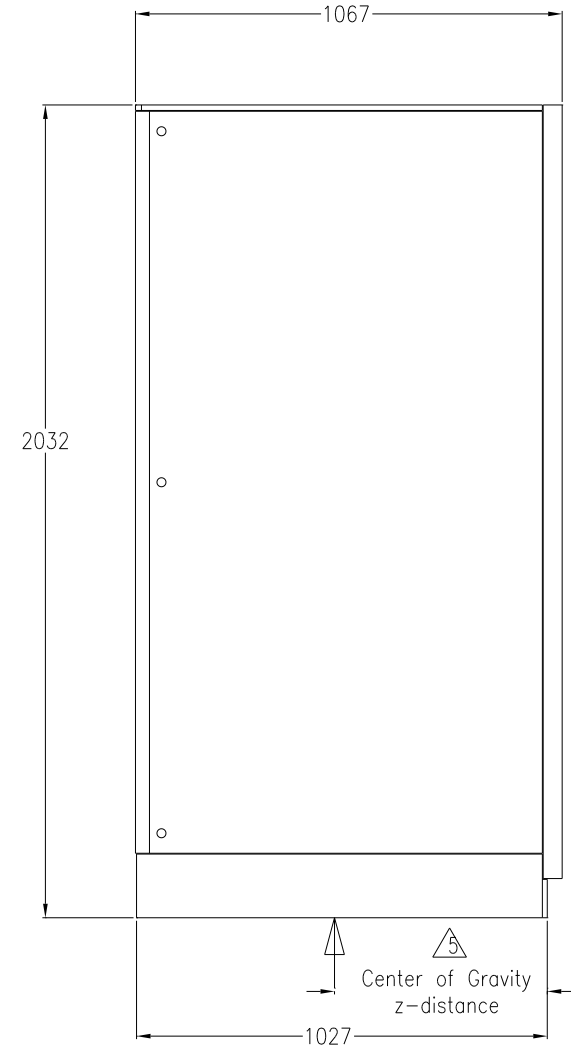
1. ALL DATA IN THIS DRAWING PROVIDED FOR FULLY POPULATED UNIT
2. PLEASE REFER TO INSTALLATION GUIDE.
3. ALL DIMENSIONS ARE IN MILLIMETERS
4. ALL VALUES ARE FOR FULLY POPULATED FRAME.
5. THE UPS IS NEVER TO BE TRANSPORTED AS FULL SYSTEM.
6. INSTALLATION MUST COMPLY WITH NATIONAL AND LOCAL ELECTRICAL REGULATIONS.

THIS DRAWING AND SPECIFICATIONS HEREIN ARE THE PROPERTY OF AMERICAN POWER CONVERSION AND SHALL NOT BE COPIED, REPRODUCED OR USED IN WHOLE OR IN PART, AS THE BASIS FOR THE MANUFACTURE OR SALE OF ITEMS WITHOUT WRITTEN PERMISSION FROM APC. THIS DRAWING IS BASED UPON LATEST AVAILABLE INFORMATION AND IS SUBJECT TO CHANGE WITHOUT NOTICE.		TITLE: SYMMETRA MW UPS CONFIGURATION-II, RIGHT HAND 400V, 3PH, 1000KW COG-UPS ASSEMBLY		DWG NO: SYMF1000KHR-CG1		REV. 4		 <small>AMERICAN POWER CONVERSION 132 FAIRGROUNDS RD WEST KINGSTON, RI 02892</small>
PROJECT: SUBMITTAL DRAWINGS		SHEET 6 OF 9		ENGINEER: C.LARSEN/S.WAGH		26/10/06		
DRAWN: C.KRISHNA		26/10/06		CHECKED: B.H.NIELSEN/S.WAGH		26/10/06		

CENTER OF GRAVITY
FOR INVERTER SECTION



FRONT VIEW



SIDE VIEW

NOTES:

1. ALL DATA IN THIS DRAWING PROVIDED FOR FULLY POPULATED UNIT
2. PLEASE REFER TO INSTALLATION GUIDE
3. ALL DIMENSIONS ARE IN MILLIMETERS
4. INSTALLATION MUST COMPLY WITH NATIONAL AND LOCAL ELECTRICAL REGULATIONS.
5. THE INVERTER SECTION IS NEVER TO BE TRANSPORTED FULLY POPULATED.
- 6.



CENTER OF GRAVITY	INVERTER SECTION	
	FULLY POPULATED	UNPOPULATED
X DISTANCE	1061 mm	1048 mm
Y DISTANCE	775 mm	615 mm
Z DISTANCE	532 mm	565 mm

THIS DRAWING AND SPECIFICATIONS HEREIN ARE THE PROPERTY OF AMERICAN POWER CONVERSION AND SHALL NOT BE COPIED, REPRODUCED OR USED IN WHOLE OR IN PART, AS THE BASIS FOR THE MANUFACTURE OR SALE OF ITEMS WITHOUT WRITTEN PERMISSION FROM APC. THIS DRAWING IS BASED UPON LATEST AVAILABLE INFORMATION AND IS SUBJECT TO CHANGE WITHOUT NOTICE.

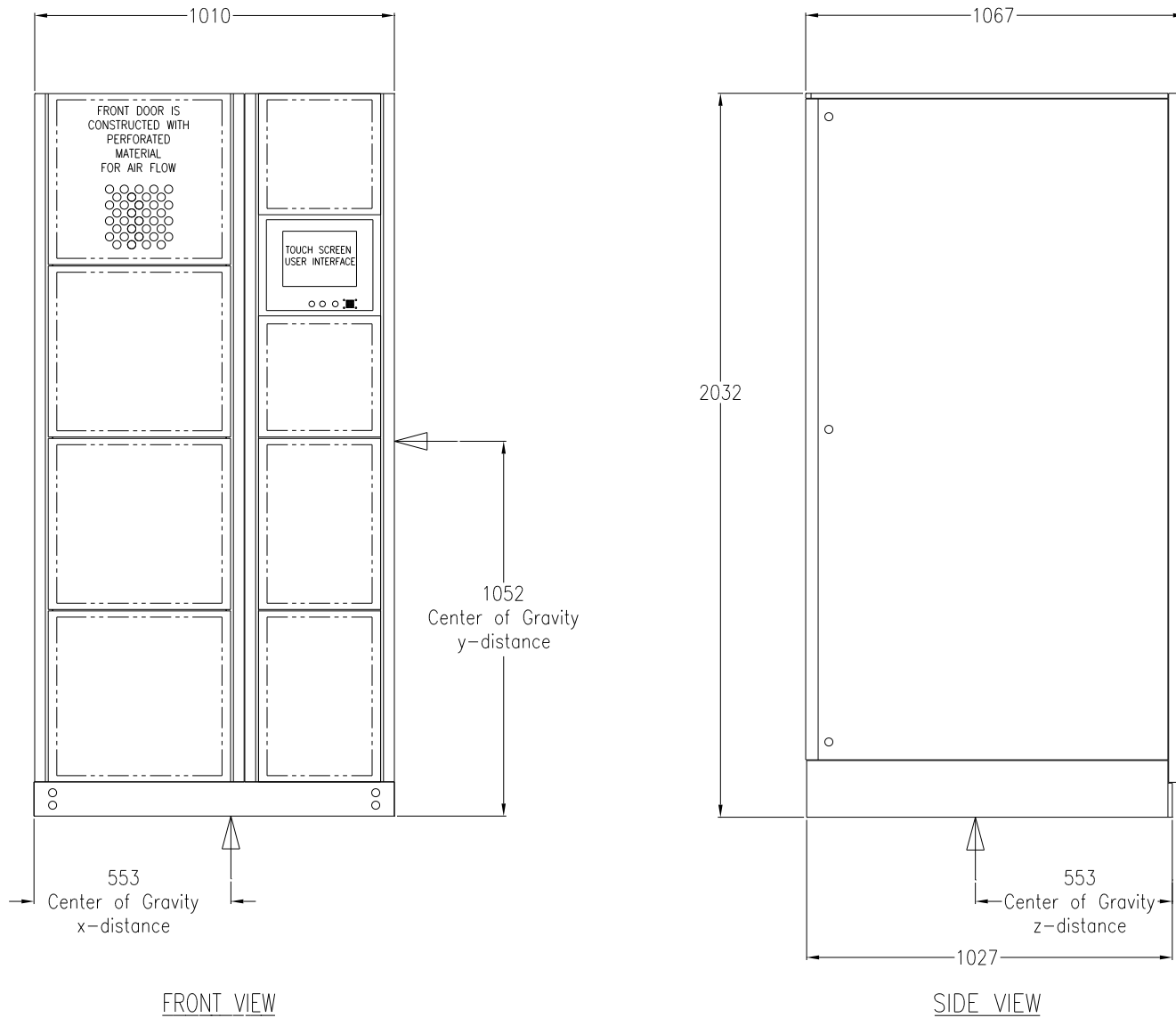
TITLE: SYMMETRA MW UPS
CONFIGURATION-II, RIGHT HAND
400V, 3PH, 1000KW
COG-INVERTER SECTION

DWG NO: SYMF1000KHR-CG2
DRAWN: C.KRISHNA
CHECKED: B.H.NIELSEN/S.WAGH
ENGINEER: C.LARSEN/S.WAGH

REV. 4
PROJECTION



CENTER OF GRAVITY FOR CONTROL SECTION



NOTES:

1. ALL DATA IN THIS DRAWING PROVIDED FOR FULLY POPULATED UNIT
2. PLEASE REFER TO INSTALLATION GUIDE
3. ALL DIMENSIONS ARE IN MILLIMETERS
4. INSTALLATION MUST COMPLY WITH NATIONAL AND LOCAL ELECTRICAL REGULATIONS.

THIS DRAWING AND SPECIFICATIONS HEREIN ARE THE PROPERTY OF AMERICAN POWER CONVERSION AND SHALL NOT BE COPIED, REPRODUCED OR USED IN WHOLE OR IN PART, AS THE BASIS FOR THE MANUFACTURE OR SALE OF ITEMS WITHOUT WRITTEN PERMISSION FROM APC. THIS DRAWING IS BASED UPON LATEST AVAILABLE INFORMATION AND IS SUBJECT TO CHANGE WITHOUT NOTICE.

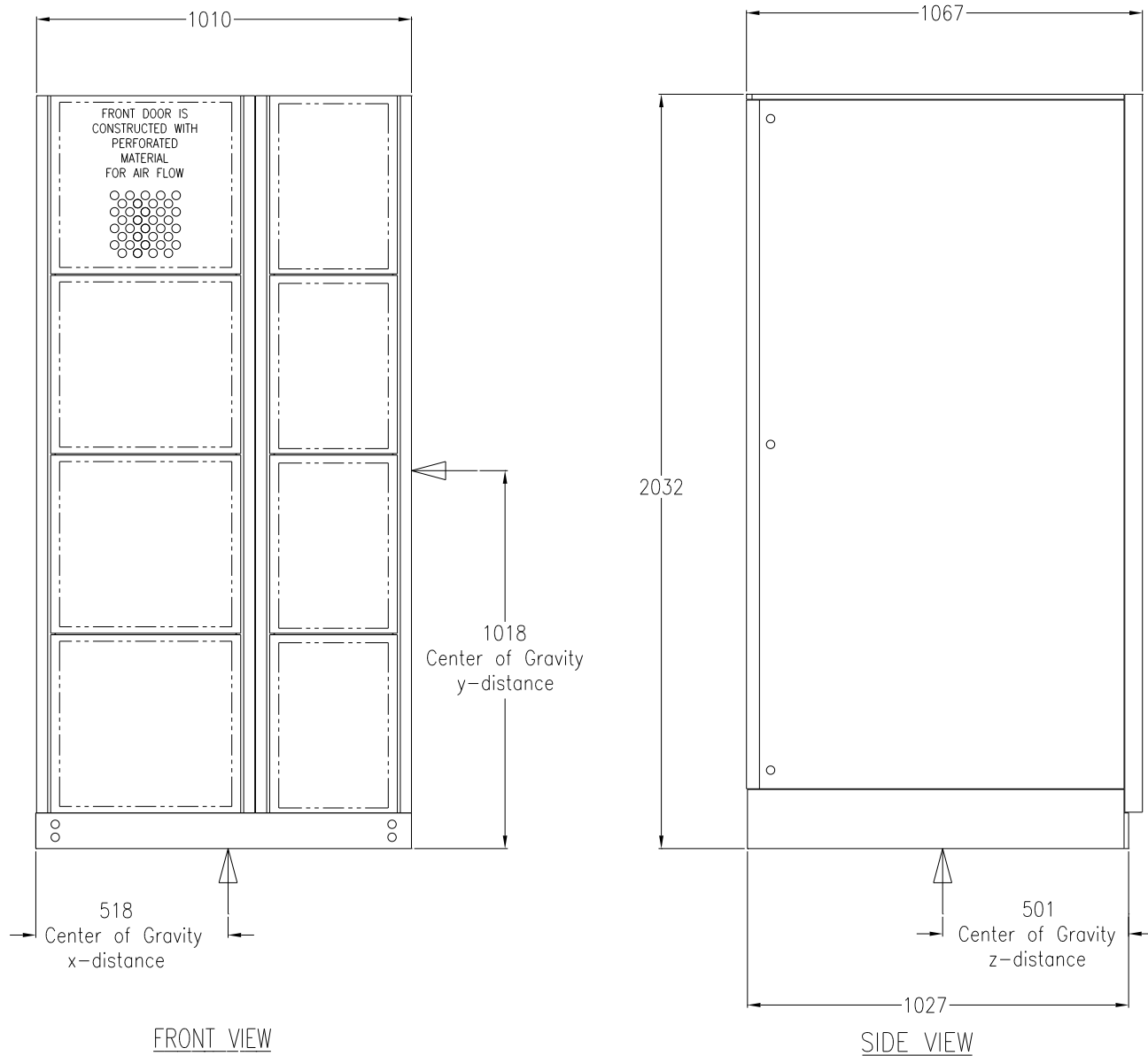
TITLE: SYMMETRA MW UPS
CONFIGURATION-II, RIGHT HAND
400V, 3PH, 1000kW
COG-CONTROL SECTION

DWG NO: SYMF1000KHR-CG3
DRAWN: C.KRISHNA
CHECKED: B.H.NIELSEN/S.WAGH
ENGINEER: C.LARSEN/S.WAGH

REV. 4
PROJECTION

APC[®]
AMERICAN POWER CONVERSION
132 FAIRGROUNDS RD
WEST KINGSTON, RI 02892

CENTER OF GRAVITY FOR INPUT/OUTPUT CABINET



NOTES:

1. ALL DATA IN THIS DRAWING PROVIDED FOR FULLY POPULATED UNIT
2. PLEASE REFER TO INSTALLATION GUIDE
3. ALL DIMENSIONS ARE IN MILLIMETERS.
4. INSTALLATION MUST COMPLY WITH NATIONAL AND LOCAL ELECTRICAL REGULATIONS.

THIS DRAWING AND SPECIFICATIONS HEREIN ARE THE PROPERTY OF AMERICAN POWER CONVERSION AND SHALL NOT BE COPIED, REPRODUCED OR USED IN WHOLE OR IN PART, AS THE BASIS FOR THE MANUFACTURE OR SALE OF ITEMS WITHOUT WRITTEN PERMISSION FROM APC. THIS DRAWING IS BASED UPON LATEST AVAILABLE INFORMATION AND IS SUBJECT TO CHANGE WITHOUT NOTICE.		TITLE: SYMMETRA MW UPS CONFIGURATION-II, RIGHT HAND 400V, 3PH, 1000KW CENTER OF GRAVITY-INPUT OUTPUT CABINET		DWG NO: SYMF1000KHR-CC4		REV. 3	
PROJECT: SUBMITTAL DRAWINGS		SHEET 9 OF 9		DRAWN: C.KRISHNA CHECKED: B.H.NIELSEN/S.WAGH		26/10/06 26/10/06	
ENGINEER: C.LARSEN/S.WAGH		26/10/06		PROJECTION		 <small>AMERICAN POWER CONVERSION 132 FAIRGROUNDS RD WEST KINGSTON, RI 02892</small>	