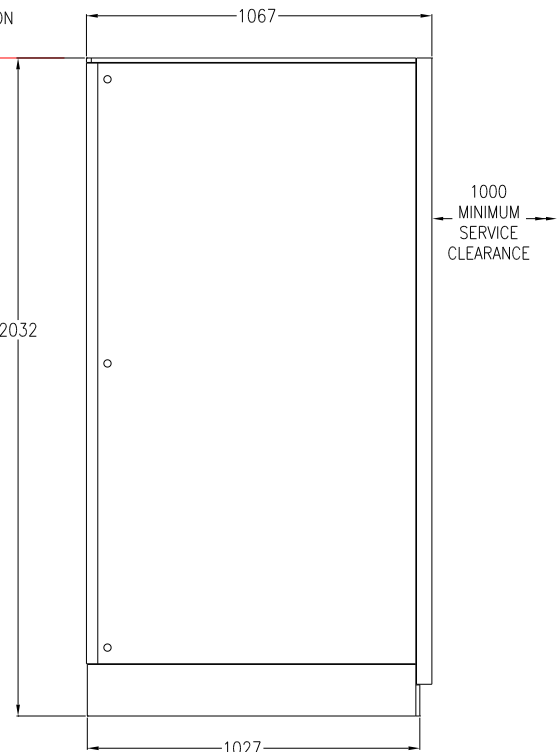
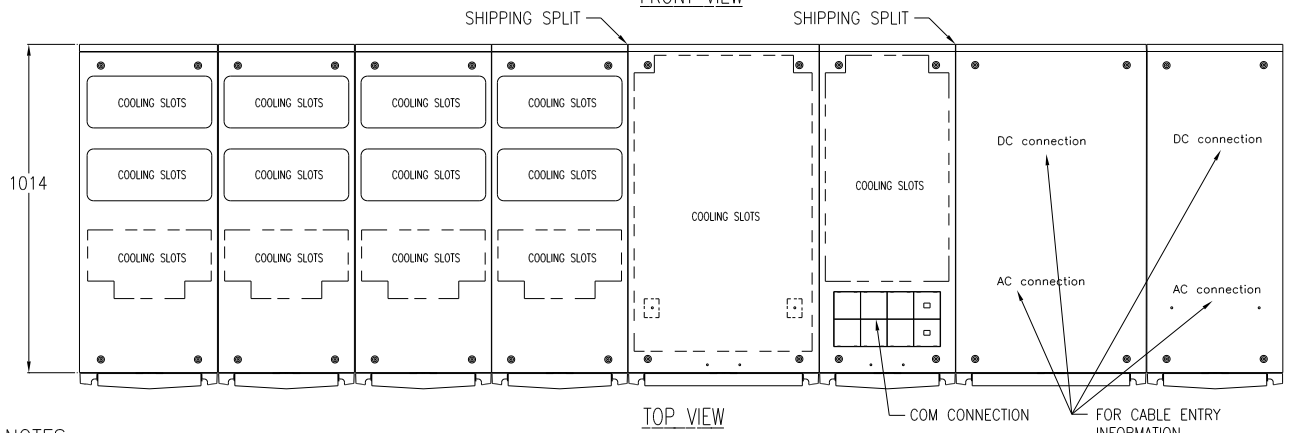


500
CLEARANCE
FOR
VENTILATION



FRONT VIEW

SIDE VIEW



TOP VIEW

NOTES:

1. ALL DATA IN THIS DRAWING PROVIDED FOR FULLY POPULATED UNIT
2. PLEASE REFER TO INSTALLATION GUIDE
3. ALL DIMENSIONS ARE IN MILLIMETERS
4. WEIGHT

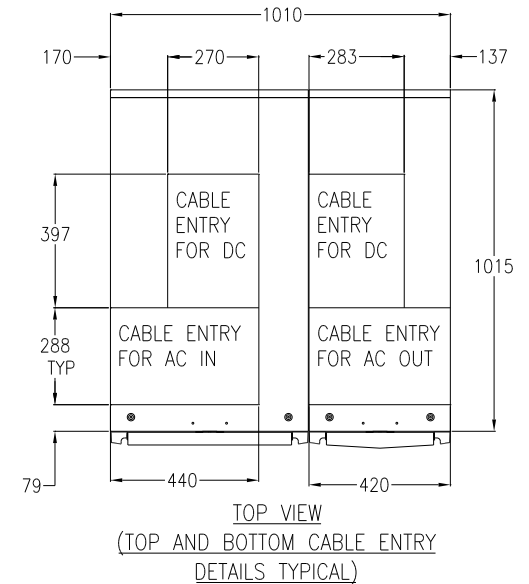
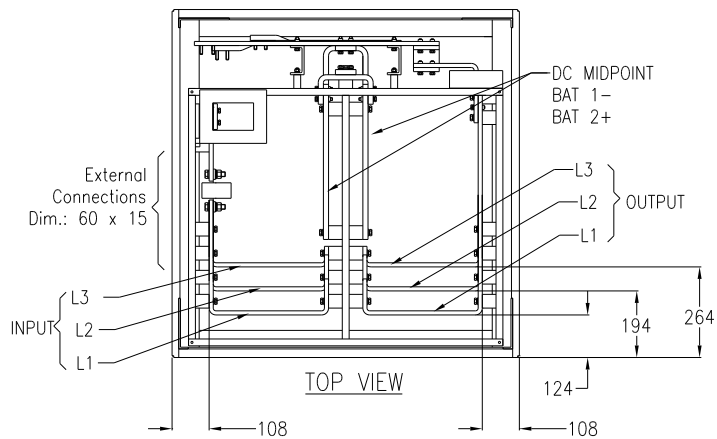
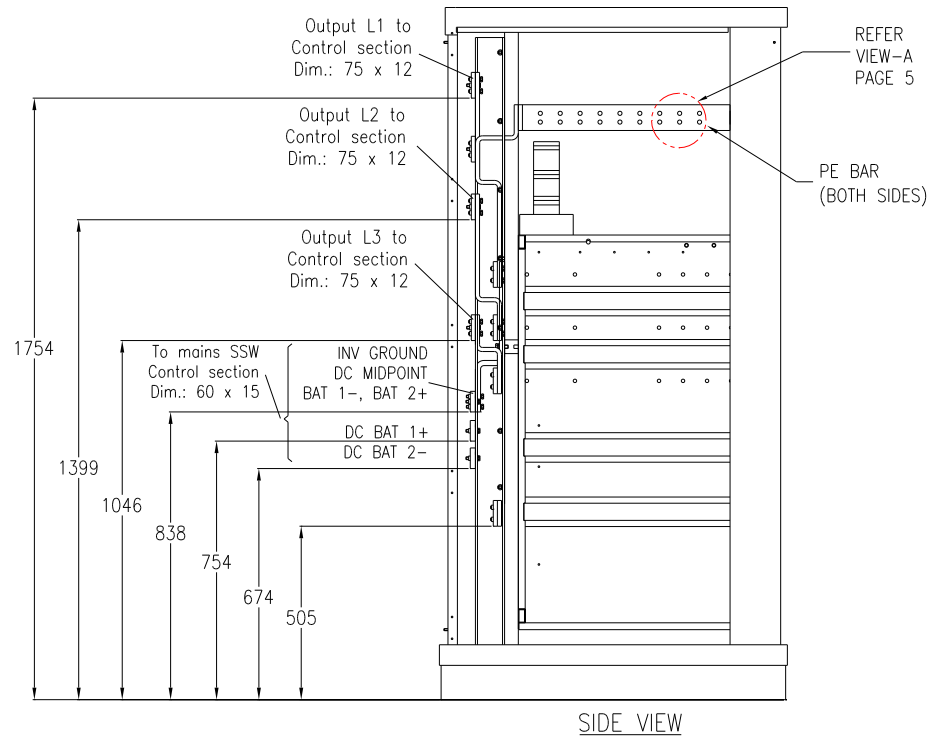
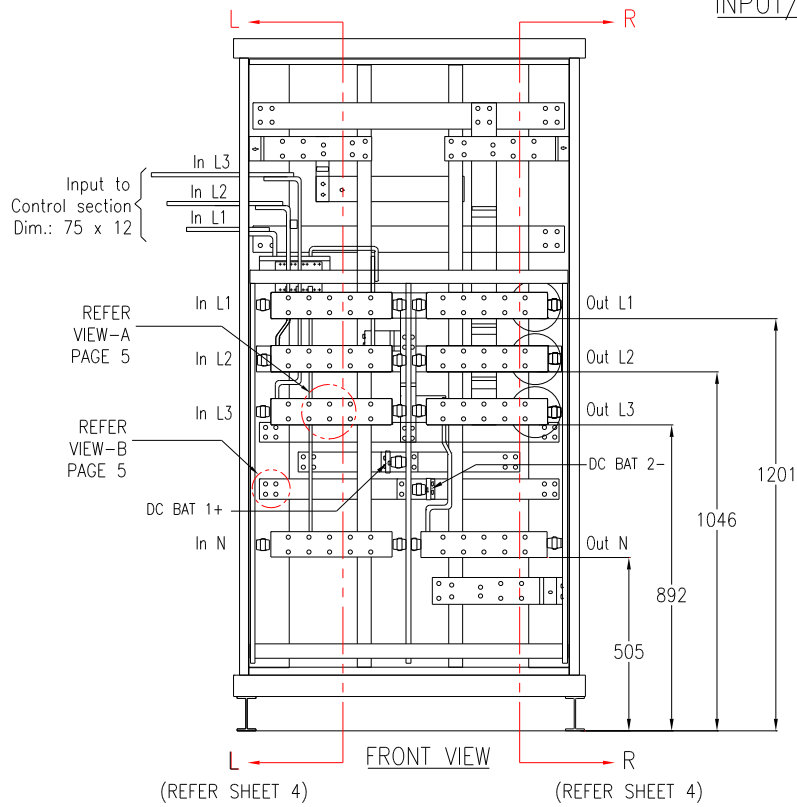
	WITH PMs	WITHOUT PMs
INVERTER SECTION	3136kg	2456kg
CONTROL SECTION	610kg	610kg
IN/OUT SECTION	480kg	480kg
TOTAL WEIGHT	4226kg	3546kg
5. CABLE ENTRY IS TOP OR BOTTOM OF UNIT
6. INSTALLATION MUST COMPLY WITH NATIONAL AND LOCAL ELECTRICAL REGULATIONS.

THIS DRAWING AND SPECIFICATIONS HEREIN ARE THE PROPERTY OF AMERICAN POWER CONVERSION AND SHALL NOT BE COPIED, REPRODUCED OR USED IN WHOLE OR IN PART, AS THE BASIS FOR THE MANUFACTURE OR SALE OF ITEMS WITHOUT WRITTEN PERMISSION FROM APC. THIS DRAWING IS BASED UPON LATEST AVAILABLE INFORMATION AND IS SUBJECT TO CHANGE WITHOUT NOTICE.

TITLE:	SYMMETRA MW UPS 400V, 3PH, 800KW CONFIGURATION-1, LEFT HAND MAIN MECHANICAL	DWG NO:	SYMF800KHL-MM1	REV:	3
DRAWN:	JAYAPRAKASH	CHECKED:	B.H.NIELSEN/S.WAGH	DATE:	26/10/06
PROJECT:	SUBMITAL DRAWING	ENGINEER:	C.LARSEN/S.WAGH	DATE:	26/10/06
SHEET 1 OF 9		PROJECTION			

APC
AMERICAN POWER CONVERSION
132 FAIRGROUNDS RD
WEST KINGSTON, RI 02892

INPUT/OUTPUT CABINET



- NOTES:
1. ALL DATA IN THIS DRAWING PROVIDED FOR FULLY POPULATED UNIT
 2. PLEASE REFER TO INSTALLATION GUIDE
 3. CABLE ENTRY IS TOP OR BOTTOM OF UNIT.
 4. SOME STRUCTURAL DETAILS AND MOUNTING BRACKETS HAVE BEEN OMITTED FOR CLARITY.
 5. ALL DIMENSIONS ARE IN MILLIMETERS
 6. INSTALLATION MUST COMPLY WITH NATIONAL AND LOCAL ELECTRICAL REGULATIONS

THIS DRAWING AND SPECIFICATIONS HEREIN ARE THE PROPERTY OF AMERICAN POWER CONVERSION AND SHALL NOT BE COPIED, REPRODUCED OR USED IN WHOLE OR IN PART, AS THE BASIS FOR THE MANUFACTURE OR SALE OF ITEMS WITHOUT WRITTEN PERMISSION FROM APC. THIS DRAWING IS BASED UPON LATEST AVAILABLE INFORMATION AND IS SUBJECT TO CHANGE WITHOUT NOTICE.

TITLE: SYMMETRA MW UPS
400V, 3PH, 800KW
CONFIGURATION-1, LEFT HAND
INTERNAL VIEW INPUT OUTPUT CABINET

PROJECT: SUBMITTAL DRAWING SHEET 3 OF 9

DWG NO: SYMF800KHL-ME1

REV: 2

DRAWN: JAYAPRAKASH 26/10/06

CHECKED: B.H.NIELSEN/S.WAGH 26/10/06

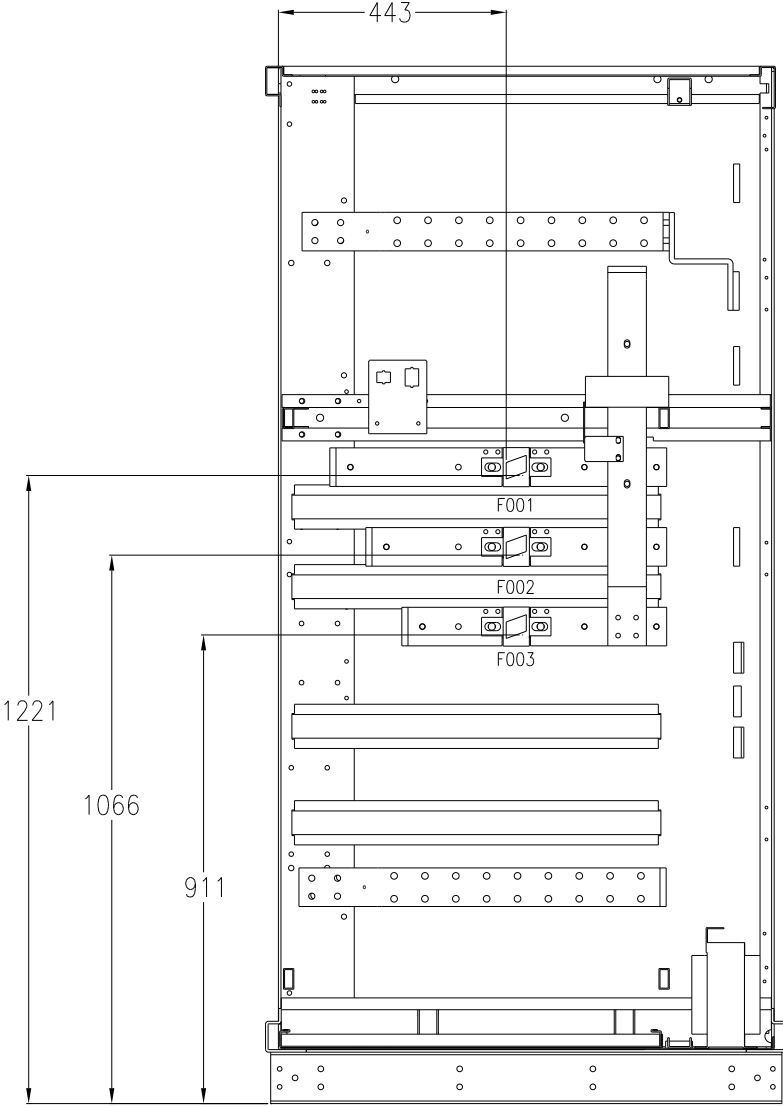
ENGINEER: C.LARSEN/S.WAGH 26/10/06

PROJECTION

APC[®]

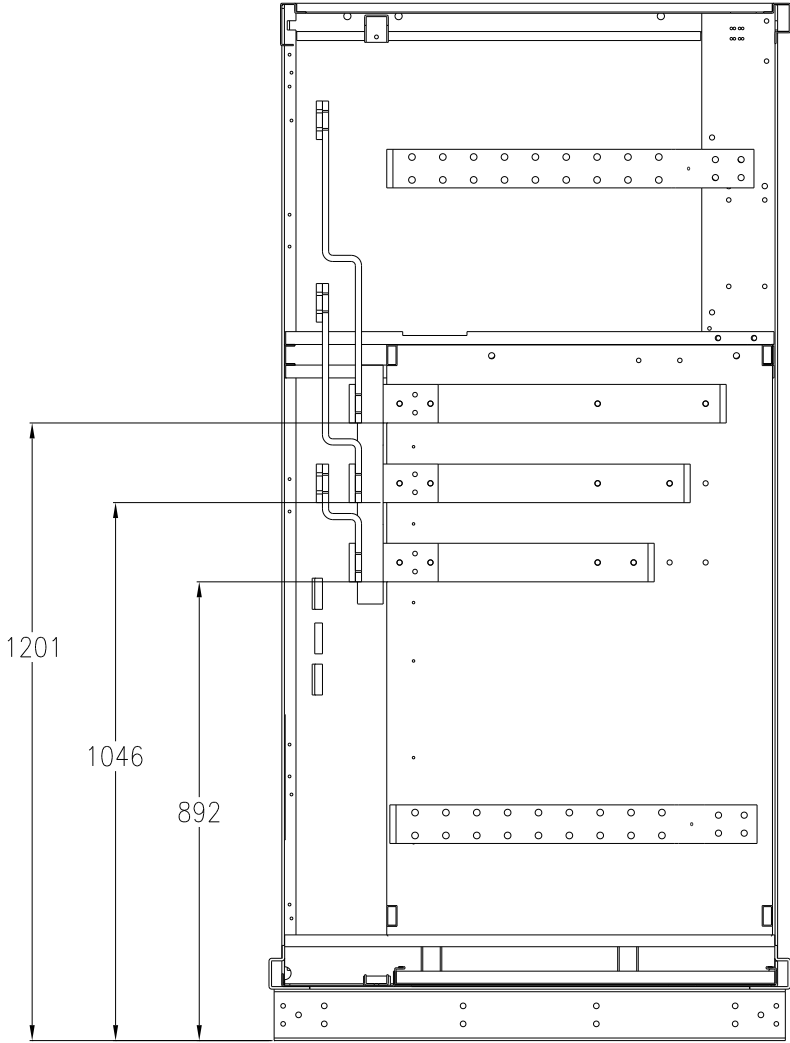
AMERICAN POWER CONVERSION
132 FAIRGROUNDS RD
WEST KINGSTON, RI 02892

INPUT/OUTPUT CABINET



SECTION L-L

INPUT FUSES



SECTION R-R

- NOTES:
1. ALL DATA IN THIS DRAWING PROVIDED FOR FULLY POPULATED UNIT
 2. PLEASE REFER TO APC PRODUCT MANUAL.
 3. ALL DIMENSIONS ARE IN MILLIMETERS
 4. INPUT FUSE RATING: 1800A (SEMI-CONDUCTOR TYPE)
 5. INSTALLATION MUST COMPLY WITH NATIONAL AND LOCAL ELECTRICAL REGULATIONS

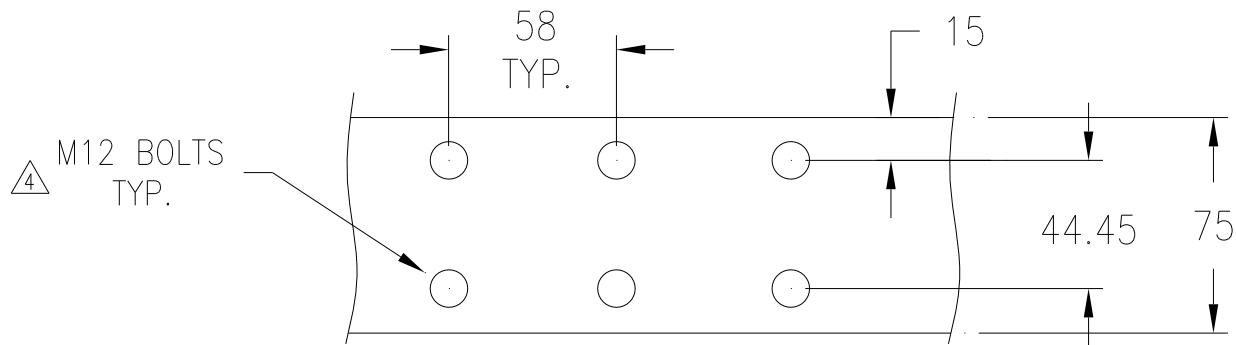
THIS DRAWING AND SPECIFICATIONS HEREIN ARE THE PROPERTY OF AMERICAN POWER CONVERSION AND SHALL NOT BE COPIED, REPRODUCED OR USED IN WHOLE OR IN PART, AS THE BASIS FOR THE MANUFACTURE OR SALE OF ITEMS WITHOUT WRITTEN PERMISSION FROM APC. THIS DRAWING IS BASED UPON LATEST AVAILABLE INFORMATION AND IS SUBJECT TO CHANGE WITHOUT NOTICE.

TITLE: SYMMETRA MW UPS
400V, 3PH, 800KW
CONFIGURATION-I, LEFT HAND
INTERNAL SECTION INPUT OUTPUT CABINET
PROJECT: SUBMITTAL DRAWING SHEET 4 OF 9

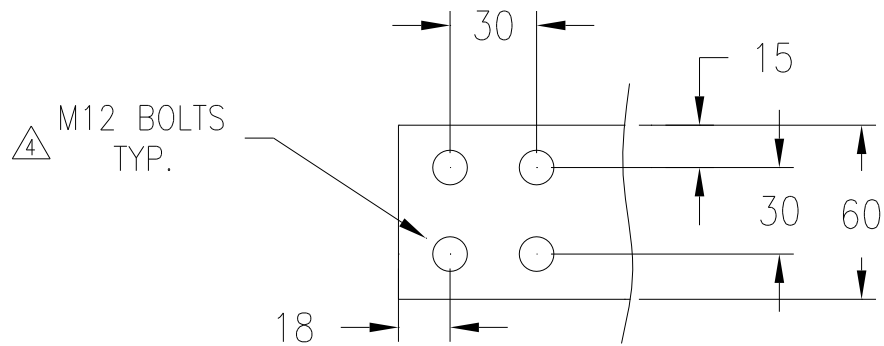
DWG NO: SYMF800KHL-ME2
DRAWN: JAYAPRAKASH
CHECKED: B.H.NIELSEN/S.WAGH
ENGINEER: C.LARSEN/S.WAGH
REV. 2
26/10/06
26/10/06
26/10/06

PROJECTION





VIEW A (ENLARGED)
INPUT/OUTPUT, PE BUS DETAIL



VIEW B (ENLARGED)
DC BUS DETAIL

NOTES:

1. ALL DATA IN THIS DRAWING PROVIDED FOR FULLY POPULATED UNIT
2. PLEASE REFER TO APC PRODUCT MANUAL.
3. ALL DIMENSIONS ARE IN MILLIMETERS
- △ 4. BOLTS AND NUTS ARE PROVIDED BY APC
5. INSTALLATION MUST COMPLY WITH NATIONAL AND LOCAL ELECTRICAL REGULATIONS.

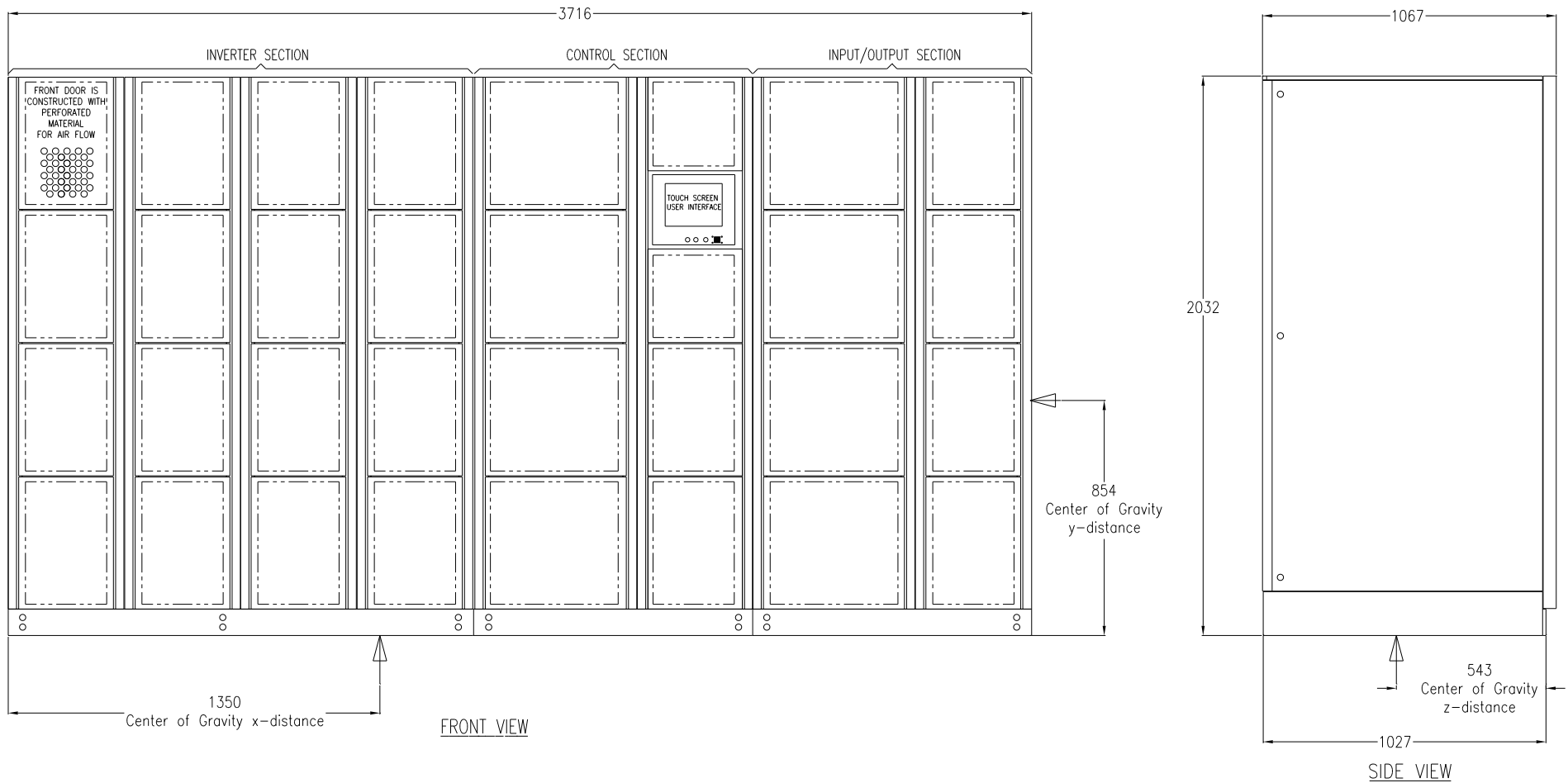
THIS DRAWING AND SPECIFICATIONS HEREIN ARE THE PROPERTY OF AMERICAN POWER CONVERSION AND SHALL NOT BE COPIED, REPRODUCED OR USED IN WHOLE OR IN PART, AS THE BASIS FOR THE MANUFACTURE OR SALE OF ITEMS WITHOUT WRITTEN PERMISSION FROM APC. THIS DRAWING IS BASED UPON LATEST AVAILABLE INFORMATION AND IS SUBJECT TO CHANGE WITHOUT NOTICE.

TITLE:	SYMMETRA MW UPS 400V, 3PH, 800KW CONFIGURATION-1, LEFT HAND BUS DETAILS	DWG NO:	SYMF800KHL-ME3	REV.	-
DRAWN:	C. KRISHNA	CHECKED:	B.H.NIELSEN/S.WAGH	26/10/06	26/10/06
PROJECT:	SUBMITAL DRAWING	ENGINEER:	C.LARSEN/S.WAGH	26/10/06	26/10/06

PROJECTION



CENTER OF GRAVITY FOR ASSEMBLY

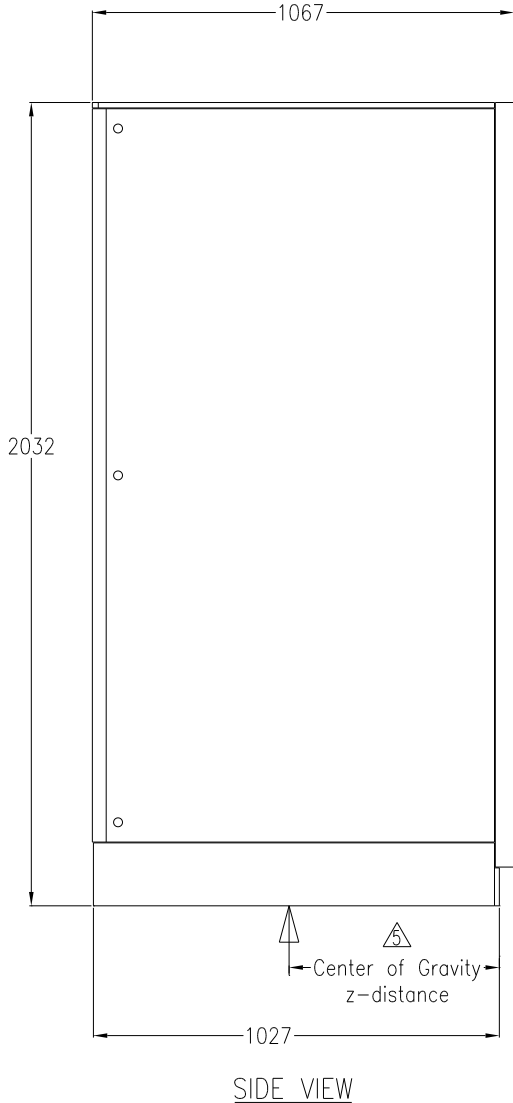
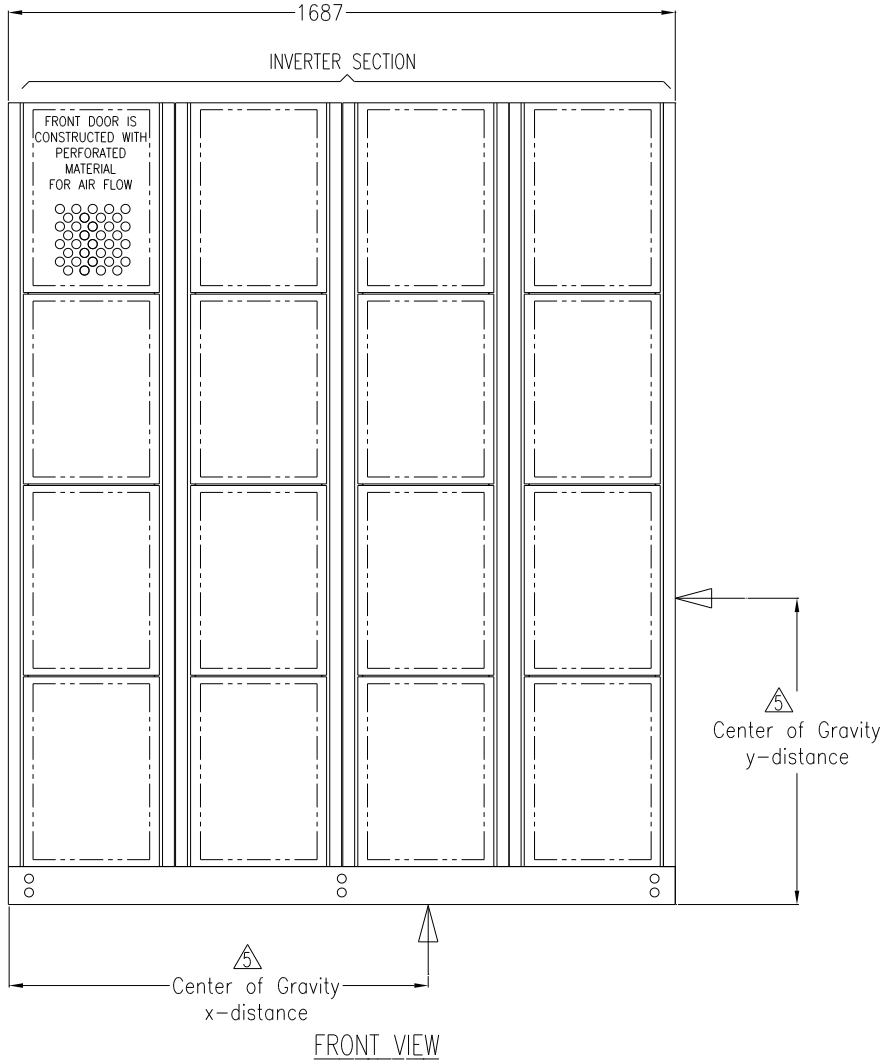


NOTES:

1. ALL DATA IN THIS DRAWING PROVIDED FOR FULLY POPULATED UNIT
2. PLEASE REFER TO INSTALLATION GUIDE
3. ALL DIMENSIONS ARE IN MILLIMETERS
4. ALL VALUES ARE FOR FULLY POPULATED FRAME
5. THE UPS IS NEVER TO BE TRANSPORTED AS A FULL SYSTEM.
6. INSTALLATION MUST COMPLY WITH NATIONAL AND LOCAL ELECTRICAL REGULATIONS.

THIS DRAWING AND SPECIFICATIONS HEREIN ARE THE PROPERTY OF AMERICAN POWER CONVERSION AND SHALL NOT BE COPIED, REPRODUCED OR USED IN WHOLE OR IN PART, AS THE BASIS FOR THE MANUFACTURE OR SALE OF ITEMS WITHOUT WRITTEN PERMISSION FROM APC. THIS DRAWING IS BASED UPON LATEST AVAILABLE INFORMATION AND IS SUBJECT TO CHANGE WITHOUT NOTICE.		TITLE: SYMMETRA MW UPS CONFIGURATION-I, LEFT HAND 400V, 3PH, 800KW COG UPS ASSEMBLY		DWG NO: SYMF800KHL-CG1		REV. 4		 AMERICAN POWER CONVERSION 132 FAIRGROUNDS RD WEST KINGSTON, RI 02892
		DRAWN: JAYAPRAKASH		26/10/06		PROJECTION 		
		CHECKED: B.H.NIELSEN/S.WACH		26/10/06				
		ENGINEER: C.LARSEN/S.WACH		26/10/06				
PROJECT: SUBMITTAL DRAWINGS		SHEET: 6 OF 9						

CENTER OF GRAVITY FOR INVERTER SECTION



- NOTES:
1. ALL DATA IN THIS DRAWING PROVIDED FOR FULLY POPULATED UNIT
 2. PLEASE REFER TO INSTALLATION GUIDE
 3. ALL DIMENSIONS ARE IN MILLIMETERS.
 4. INSTALLATION MUST COMPLY WITH NATIONAL AND LOCAL ELECTRICAL REGULATIONS.
 5. THE INVERTER SECTION IS NEVER TO BE TRANSPORTED FULLY POPULATED.

CENTER OF GRAVITY	INVERTER SECTION	
	FULLY POPULATED (WITH PM)	UNPOPULATED (WITHOUT PM)
X DISTANCE	846mm	835mm
Y DISTANCE	777mm	619mm
Z DISTANCE	532mm	565mm

THIS DRAWING AND SPECIFICATIONS HEREIN ARE THE PROPERTY OF AMERICAN POWER CONVERSION AND SHALL NOT BE COPIED, REPRODUCED OR USED IN WHOLE OR IN PART, AS THE BASIS FOR THE MANUFACTURE OR SALE OF ITEMS WITHOUT WRITTEN PERMISSION FROM APC. THIS DRAWING IS BASED UPON LATEST AVAILABLE INFORMATION AND IS SUBJECT TO CHANGE WITHOUT NOTICE.

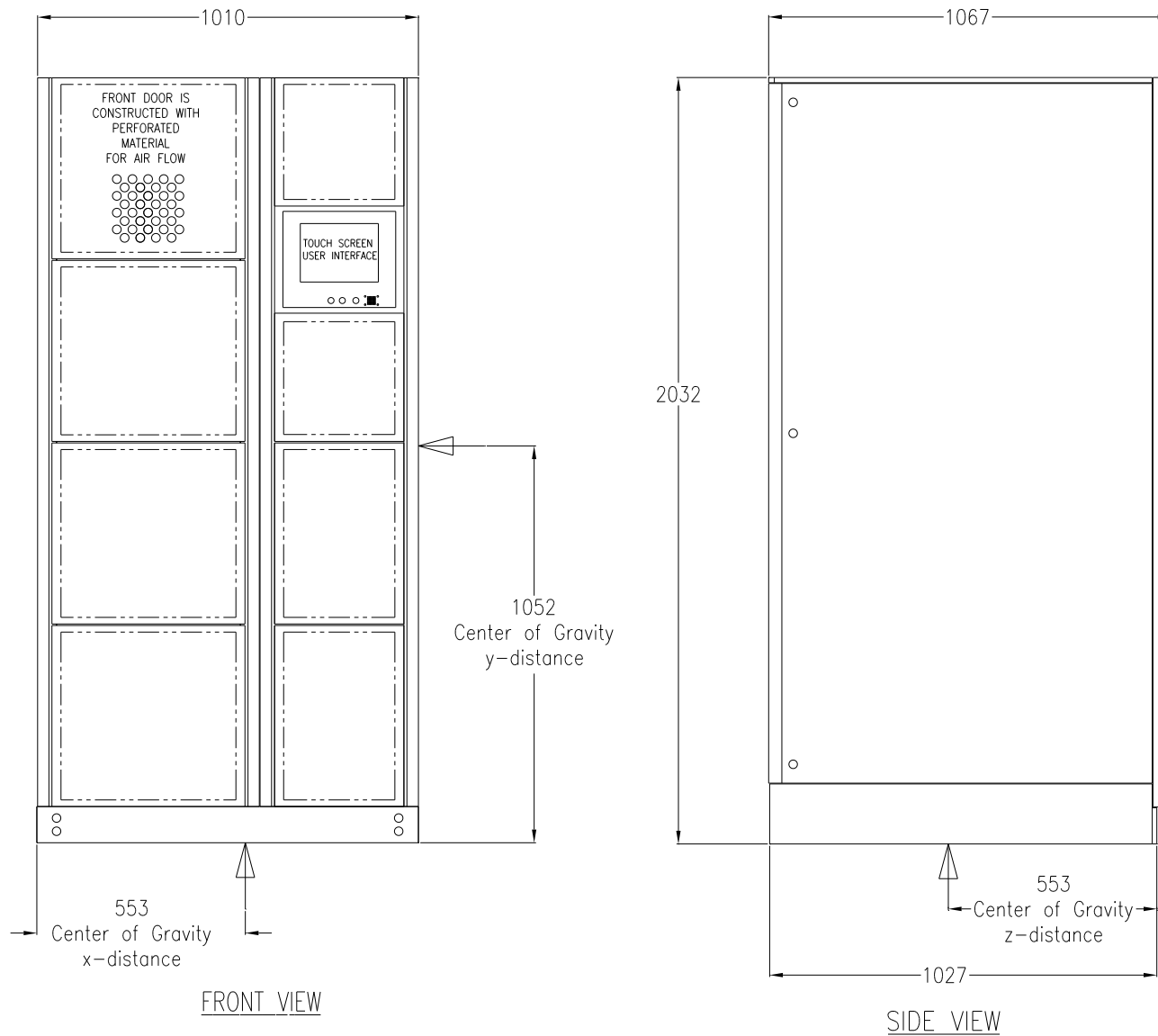
TITLE: SYMMETRA MW UPS CONFIGURATION-I, LEFT HAND 400V, 3PH, 800KW COG INVERTER SECTION
 PROJECT: SUBMITTAL DRAWINGS SHEET 7 OF 9

DWG NO: SYMF800KHL-CG2
 DRAWN: JAYAPRAKASH
 CHECKED: B.H.NIELSEN/S.WAGH
 ENGINEER: C.LARSEN/S.WAGH

REV. 4
 PROJECTION



CENTER OF GRAVITY FOR CONTROL SECTION



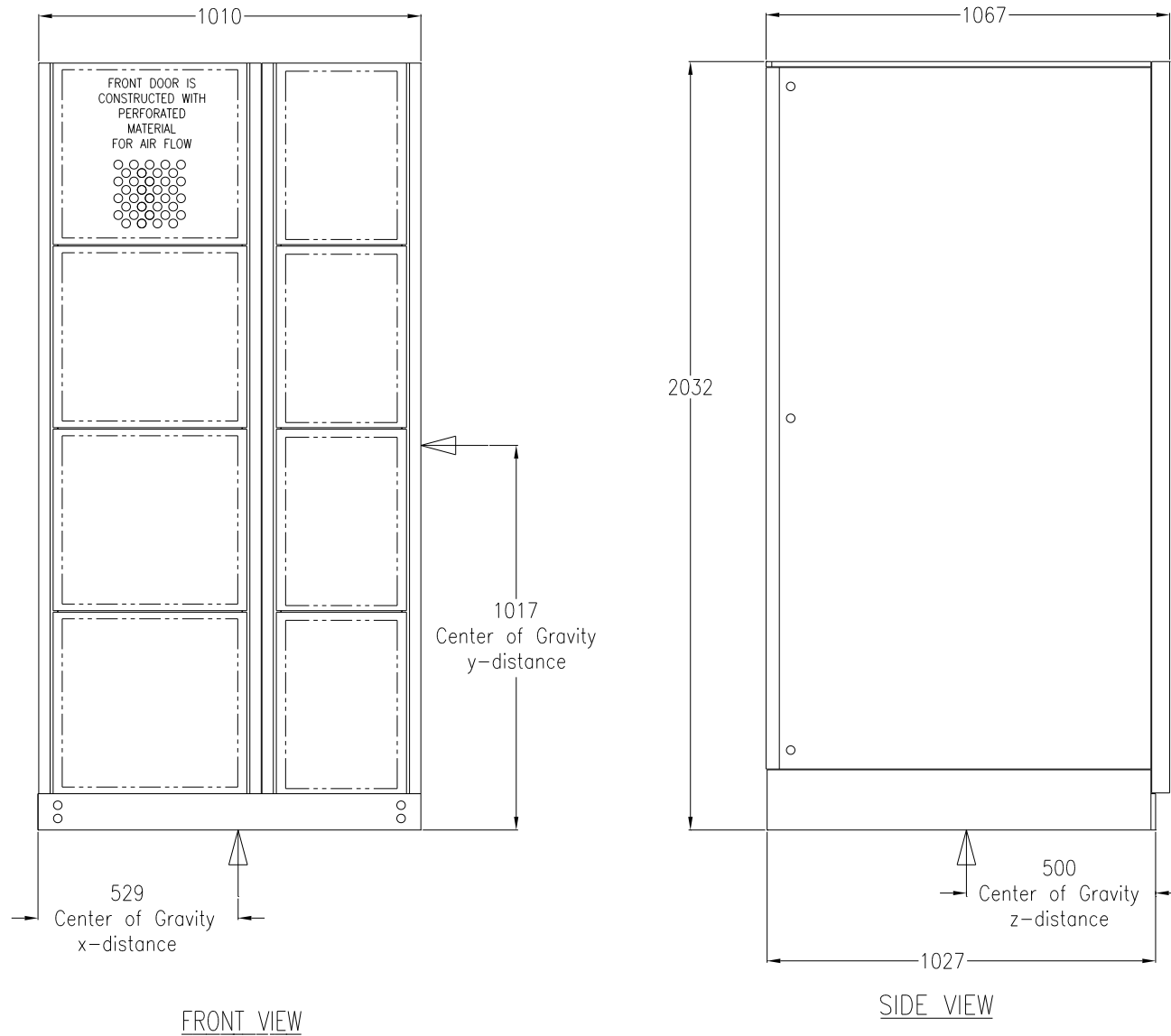
- NOTES:
1. ALL DATA IN THIS DRAWING PROVIDED FOR FULLY POPULATED UNIT
 2. PLEASE REFER TO INSTALLATION GUIDE
 3. ALL DIMENSIONS ARE IN MILLIMETERS
 4. INSTALLATION MUST COMPLY WITH NATIONAL AND LOCAL ELECTRICAL REGULATIONS.

THIS DRAWING AND SPECIFICATIONS HEREIN ARE THE PROPERTY OF AMERICAN POWER CONVERSION AND SHALL NOT BE COPIED, REPRODUCED OR USED IN WHOLE OR IN PART, AS THE BASIS FOR THE MANUFACTURE OR SALE OF ITEMS WITHOUT WRITTEN PERMISSION FROM APC. THIS DRAWING IS BASED UPON LATEST AVAILABLE INFORMATION AND IS SUBJECT TO CHANGE WITHOUT NOTICE.

TITLE: SYMMETRA MW UPS CONFIGURATION-1, LEFT HAND 400V, 3PH, 800kW COG CONTROL SECTION		DWG NO: SYMF800KHL-CG3	REV: 3
DRAWN: JAYAPRAKASH	26/10/06	PROJECTION	
CHECKED: B.H.NIELSEN/S.WAGH	26/10/06	⊕	
PROJECT: SUBMITTAL DRAWINGS	SHEET 8 OF 9	ENGINEER: C.LARSEN/S.WAGH	26/10/06



CENTER OF GRAVITY FOR INPUT/OUTPUT CABINET



NOTES:

1. ALL DATA IN THIS DRAWING PROVIDED FOR FULLY POPULATED UNIT
2. PLEASE REFER TO INSTALLATION GUIDE
3. ALL DIMENSIONS ARE IN MILLIMETERS.
4. INSTALLATION MUST COMPLY WITH NATIONAL AND LOCAL ELECTRICAL REGULATIONS.

THIS DRAWING AND SPECIFICATIONS HEREIN ARE THE PROPERTY OF AMERICAN POWER CONVERSION AND SHALL NOT BE COPIED, REPRODUCED OR USED IN WHOLE OR IN PART, AS THE BASIS FOR THE MANUFACTURE OR SALE OF ITEMS WITHOUT WRITTEN PERMISSION FROM APC. THIS DRAWING IS BASED UPON LATEST AVAILABLE INFORMATION AND IS SUBJECT TO CHANGE WITHOUT NOTICE.	TITLE: SYMMETRA MW UPS CONFIGURATION-1, LEFT HAND 400V, 3PH, 800kW COG INPUT/OUTPUT CABINET	DWG NO: SYMF800KHL-CG4	REV. 3	AMERICAN POWER CONVERSION 132 FAIRGROUNDS RD WEST KINGSTON, RI 02892
	PROJECT: SUBMITTAL DRAWINGS SHEET 9 OF 9	DRAWN: JAYAPRAKASH 26/10/06 CHECKED: B.H.NIELSEN/S.WAGH 26/10/06 ENGINEER: C.LARSEN/S.WAGH 26/10/06	PROJECTION	