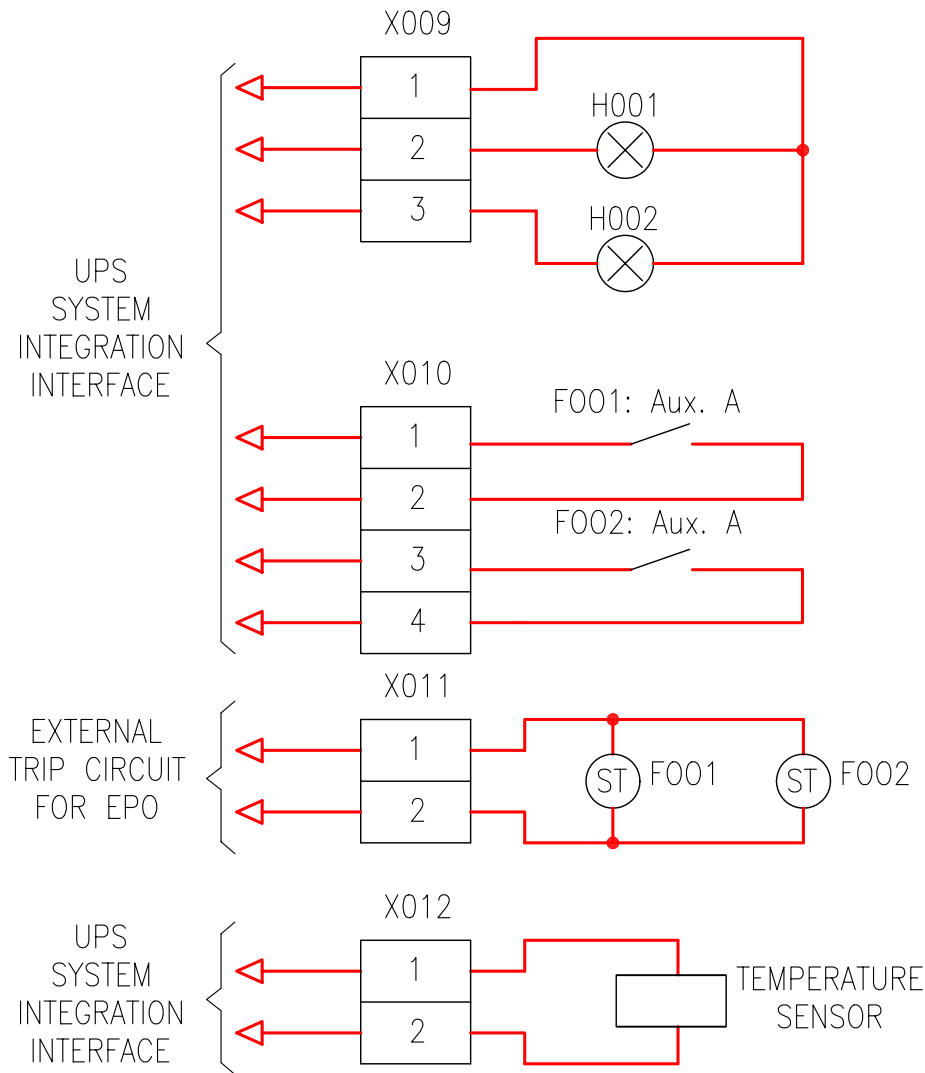
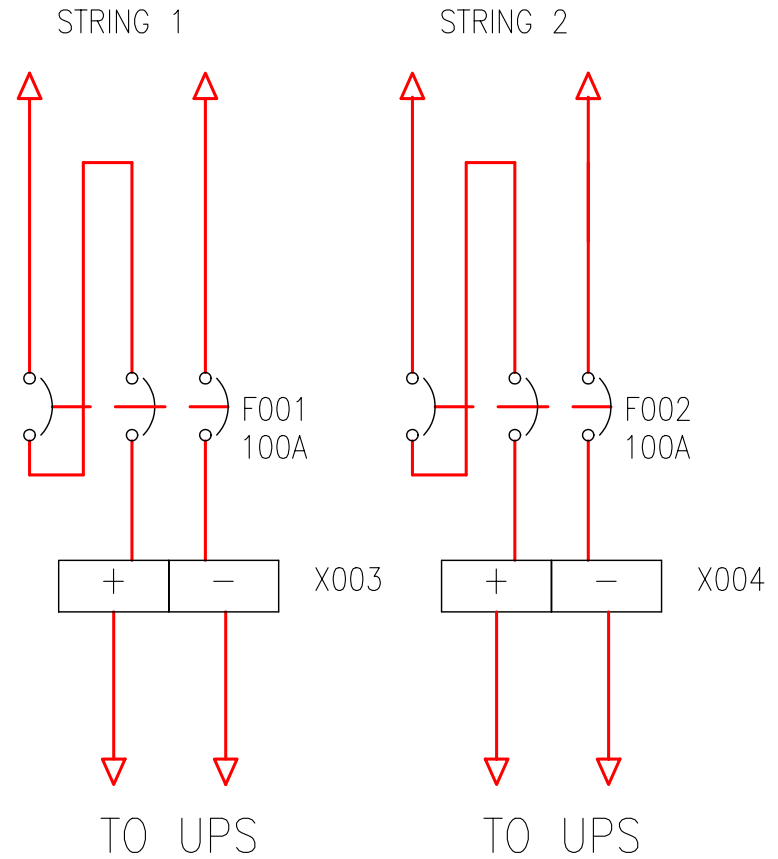




## CONTROL CIRCUITS



## TO BATTERY BOX



### NOTES:

#### CONTROL SIGNALS:

- H001, H002 - LED SIGNAL FROM UPS: "OK FOR OPERATING CORRESPONDING MCCB"
- F001/F002:Aux.A - MCCB POSITION SIGNAL FOR UPS
- F001/F002: ST - SHUNT TRIP FOR EMERGENCY POWER OFF
- TEMPERATURE SENSOR - TEMPERATURE COMPENSATION OF CHARGING VOLTAGE

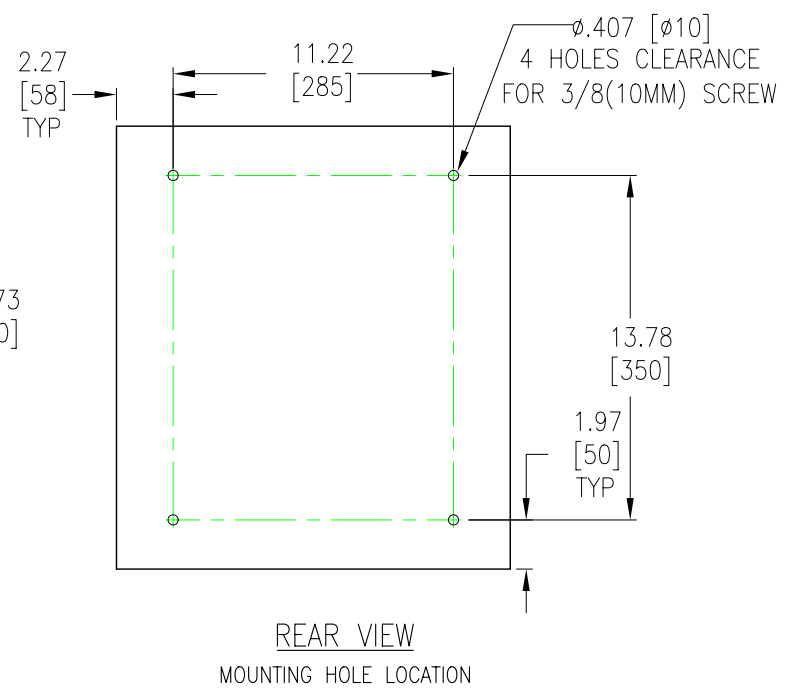
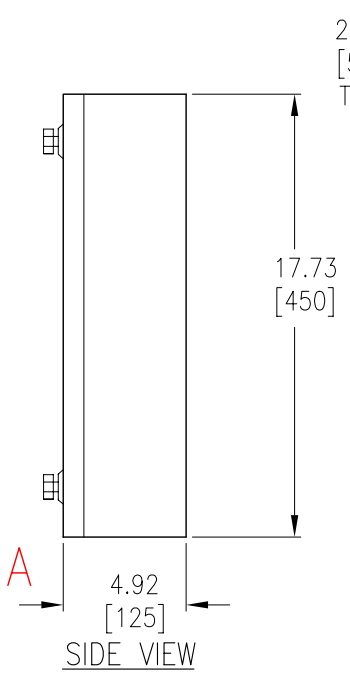
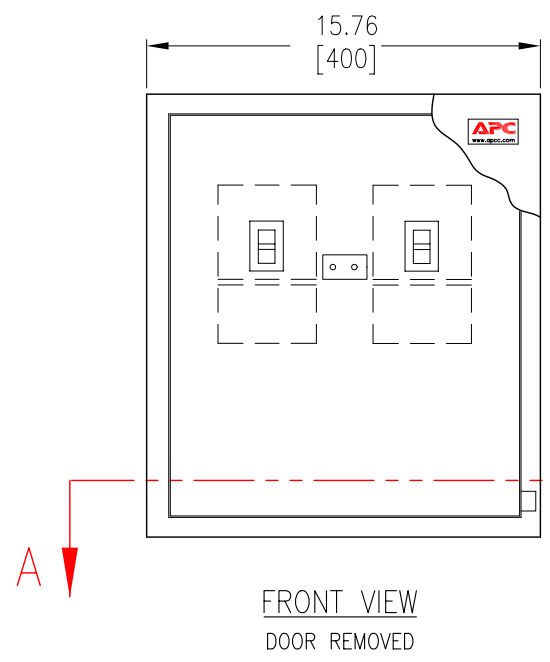
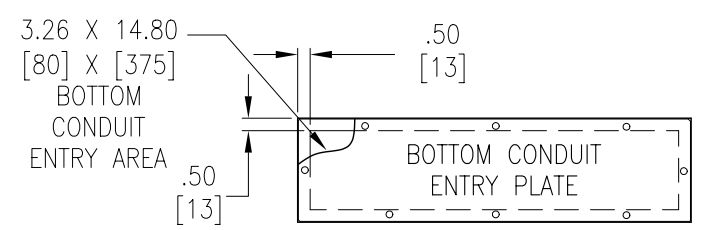
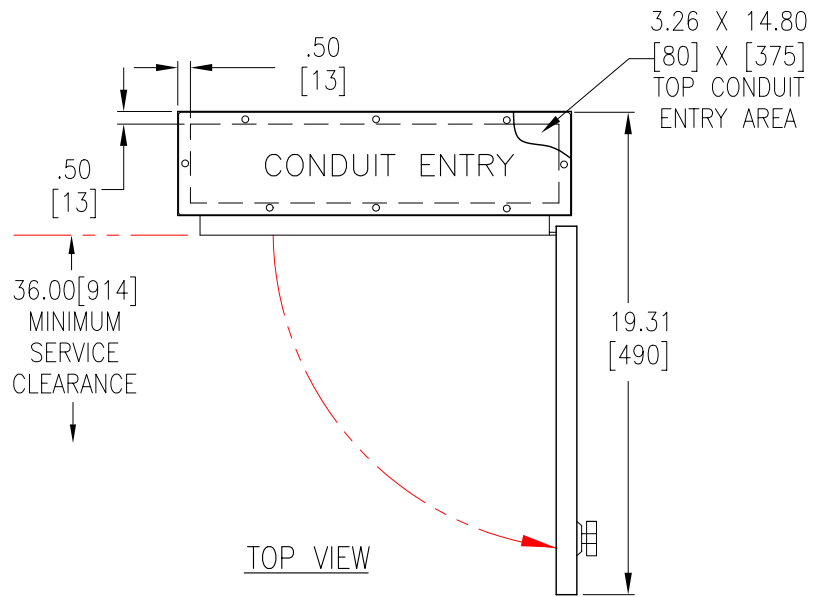
THIS DRAWING AND SPECIFICATIONS HEREIN ARE THE PROPERTY OF AMERICAN POWER CONVERSION AND SHALL NOT BE COPIED, REPRODUCED OR USED IN WHOLE OR IN PART, AS THE BASIS FOR THE MANUFACTURE OR SALE OF ITEMS WITHOUT WRITTEN PERMISSION FROM APC. THIS DRAWING IS BASED UPON LATEST AVAILABLE INFORMATION AND IS SUBJECT TO CHANGE WITHOUT NOTICE.

TITLE: SILCON 30/40/60kW UPS  
BATTERY BREAKER BOX  
ELECTRICAL SCHEMATIC  
30/40/60kW 480V

PROJECT: SUBMITTAL DRAWINGS SHEET 2 OF 4

DWG NO:	SBB30K60G-ES	REV.	1
DRAWN BY:	M CRAVEN		01/19/02
CHECKED BY:	M LEPARD		01/24/02
ENGINEER:	R HANSEN		01/24/02

**APC**<sup>®</sup>  
AMERICAN POWER CONVERSION  
132 FAIRGROUNDS RD  
WEST KINGSTON, RI 02892



- NOTES:
1. ALL DIMENSIONS ARE IN INCHES [MILLIMETERS].
  2. MINIMUM FRONT SERVICE CLEARANCE IS 36.00 INCHES (914 MM)
  3. CONDUIT ENTRANCE IS TOP OR BOTTOM OF UNIT.
  4. INSTALLATION MUST COMPLY WITH ALL APPLICABLE NATIONAL AND LOCAL CODES

THIS DRAWING AND SPECIFICATIONS HEREIN ARE THE PROPERTY OF AMERICAN POWER CONVERSION AND SHALL NOT BE COPIED, REPRODUCED OR USED IN WHOLE OR IN PART, AS THE BASIS FOR THE MANUFACTURE OR SALE OF ITEMS WITHOUT WRITTEN PERMISSION FROM APC. THIS DRAWING IS BASED UPON LATEST AVAILABLE INFORMATION AND IS SUBJECT TO CHANGE WITHOUT NOTICE.

TITLE: SILICON 30/40/60kW UPS BATTERY BREAKER BOX MECHANICAL 30/40/60kW 480V

PROJECT: SUBMITTAL DRAWINGS SHEET 3 OF 4

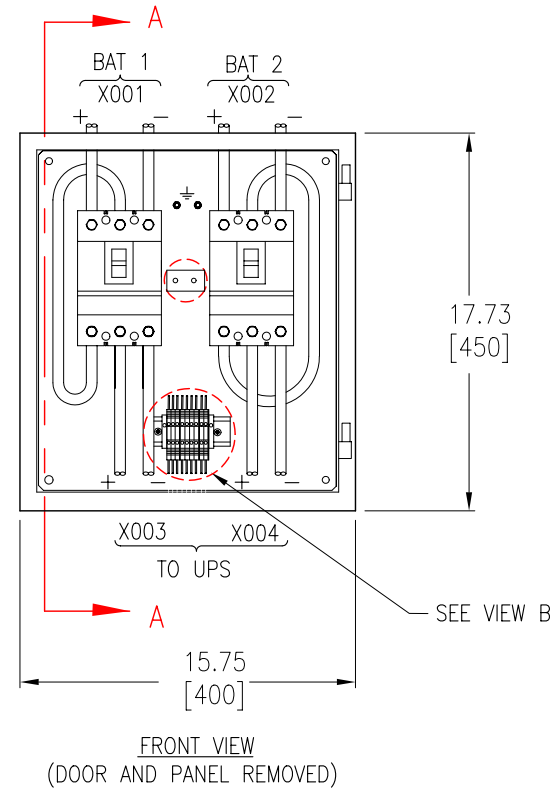
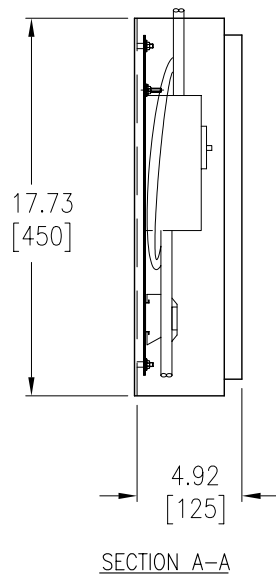
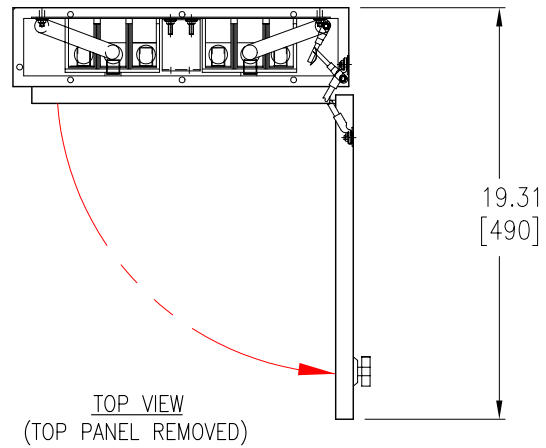
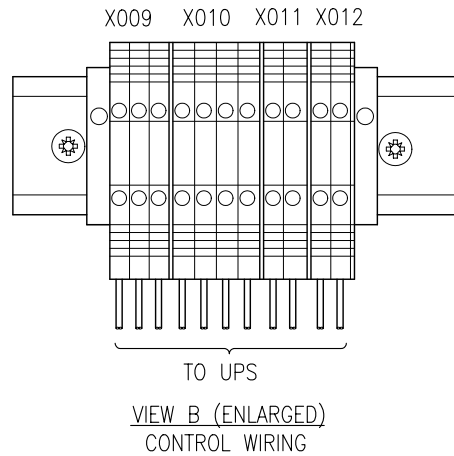
DWG NO: SBB30K60G-MM REV. 1

DRAWN BY: M CRAVEN 01/19/02

CHECKED BY: M LEPARD 01/24/02

ENGINEER: R HANSEN 01/24/02





**NOTES:**

1. ALL DIMENSIONS ARE IN INCHES [MILLIMETERS]
2. BATTERY CABLING VOLTAGE DROP SHOULD NOT EXCEED 1%.
3. CIRCUIT BREAKERS ARE 100 AMP.
4. WIRING CONFIGURATION SHOWN IS FOR REFERENCE ONLY.
5. INSTALLATION MUST COMPLY WITH ALL APPLICABLE NATIONAL AND LOCAL CODES.

THIS DRAWING AND SPECIFICATIONS HEREIN ARE THE PROPERTY OF AMERICAN POWER CONVERSION AND SHALL NOT BE COPIED, REPRODUCED OR USED IN WHOLE OR IN PART, AS THE BASIS FOR THE MANUFACTURE OR SALE OF ITEMS, WITHOUT WRITTEN PERMISSION FROM APC. THIS DRAWING IS BASED UPON LATEST AVAILABLE INFORMATION AND IS SUBJECT TO CHANGE WITHOUT NOTICE.

TITLE: SILCON 30/40/60kW UPS  
BATTERY BREAKER BOX  
ELECTROMECHANICAL  
30/40/60kW 480V

PROJECT: SUBMITTAL DRAWINGS SHEET 4 OF 4

DWG NO: SBB30K60G-ME REV. 1

DRAWN BY:	M CRAVEN	01/19/02
CHECKED BY:	M LEPARD	01/24/02
ENGINEER:	R HANSEN	01/24/02

**APC**<sup>®</sup>  
AMERICAN POWER CONVERSION  
132 FAIRGROUNDS RD  
WEST KINGSTON, RI 02892