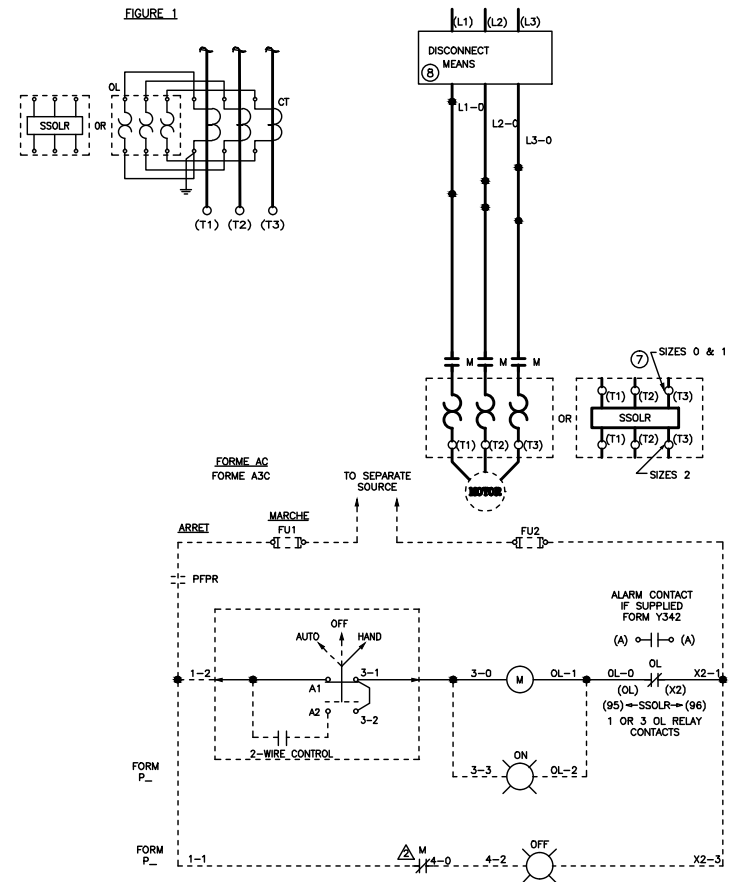


ITEM	CATALOG	DESCRIPTION
1	HLL36030M71	30A CIRCUIT BREAKER
2	9422RQ1	CIRCUIT BREAKER OPERATING MECHANISM
3	9999R26	AUXILIARY CONTACT ON C/B OPERATING MECHANISM
4	9422A3	OPERATING HANDLE FOR DISCONNECT SWITCH
5	9422R1	OPERATING ROD FOR DISCONNECT SWITCH
6	8536SDO1V02H301S	FULL VOLTAGE MOTOR STARTER W/MOTORLOGIC NEMA SIZE 2
7	9999SX8	AUXILIARY CONTACT 1 N.O. AND 1 N.C. ON STARTER
8	9999SC8	HAND OFF AUTO SELECTOR SWITCH
9	9999SPL29R	RED LED PILOT LIGHT
10	9999SPL29G	GREEN LED PILOT LIGHT
11	9066RB1	RESET PUSHBUTTON

NOTES:

- NEMA TYPE 12 ENCLOSURE.
- ITEMS 1,2,3,4 AND 6 ARE WELDED AS SHOWN, ALL SEAMS & JOINTS ARE CONTINUOUS WELDED FOR NEMA 12 SERVICE. AFTER WELDING THESE PARTS ARE PAINTED PER FINISH SPECIFICATION.
- FINISH 30795-514 .4PTS
- AFTER ITEMS 1,2,3,4 AND 6 WERE PAINTED, INSTALL COVER ASSEMBLY ITEM 8 USING HINGE PIN ITEM 5.
- DIMENSIONS A=6.75/[171] FOR ASSEMBLY -50
A=8.25/[210] FOR ASSEMBLY -51.
- FIP GASKET MUST BE LOCATED ON ITEM 8, PER BBV5702800 SPECIFICATION.

SEE DRAWING 50014-009-5X FOR GASKET LOCATION.*



DUAL DIMENSIONS: INCHES
MILLIMETERS

COMBO MOTOR STARTER
SIZE 2
8539SDASP5
(8539SDA52V02CH301P51P52SX22Y74)



Schneider Electric

DWG# 8539SDASP5
NO.