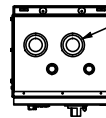


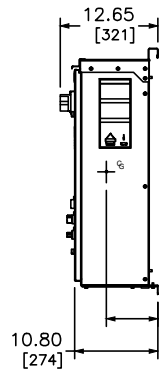
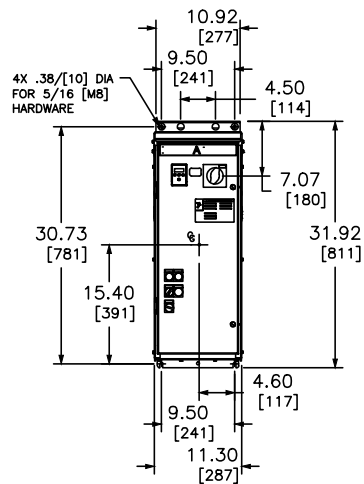
TOP VIEW

KNOCKOUTS NOT INCLUDED IN THE TOP OF UL TYPE 3R ENCLOSURES, TOP CONDUIT ENTRY IS NOT RECOMMENDED FOR UL TYPE 3R ENCLOSURES.

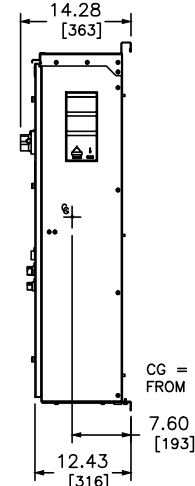
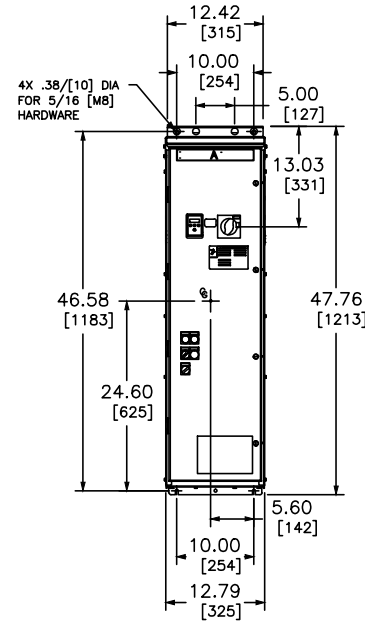


TOP VIEW

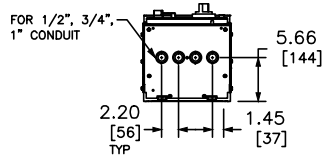
KNOCKOUTS NOT INCLUDED IN THE TOP OF UL TYPE 3R ENCLOSURES, TOP CONDUIT ENTRY IS NOT RECOMMENDED FOR UL TYPE 3R ENCLOSURES.



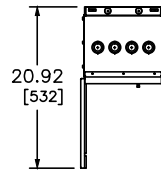
SIZE A ENCLOSURE



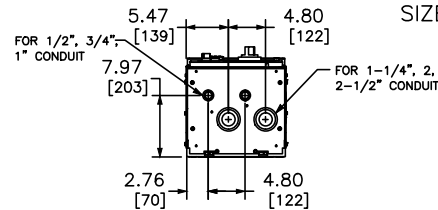
SIZE B ENCLOSURE



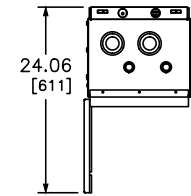
BOTTOM VIEW



Ⓐ DOOR PROJECTION



BOTTOM VIEW



Ⓑ DOOR PROJECTION

DUAL DIMENSIONS: MILLIMETERS INCHES

SIZE A ENCLOSURE
 TYPE 1/12K 3-25HP 208V, 5-30HP 230V, 10-60HP 460V, 15-75HP 600V
 TYPE 3R 3-20HP 208V, 5-25HP 230V, 10-50HP 460V, 15-60HP 600V
 SIZE B ENCLOSURE
 TYPE 1/12K 30-50HP 208V, 40-60HP 230V, 75-125HP 460V, 100-150HP 600V
 TYPE 3R 25-40HP 208V, 30-50HP 230V, 60-100HP 460V, 75-125HP 600V

OUTLINE DRAWING A & B
 ATS22 ENCLOSURE



DWG# 80463-220-00
 NO.