

ACCESSORY WEATHERSHIELD (WS364)

APPROXIMATE CENTER OF GRAVITY

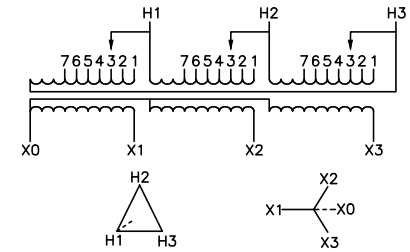
ACCESSORY WALL MOUNTING BRACKETS (WMB363-364)

ACCESSORY CEILING MOUNTING BRACKETS (CMB364)

**SEISMIC QUALIFICATION:**

TO BE COMPLIANT WITH THE SEISMIC REQUIREMENTS OF ASCE/SEI 7, THIS UNIT HAS BEEN QUALIFIED BY SHAKE TABLE TESTING THROUGH SELF CERTIFICATION TO ICC ES AC156. THE ENCLOSURE SHOWN ABOVE IS 20D. CONTACT YOUR LOCAL SCHNEIDER ELECTRIC/SQUARE D REPRESENTATIVE FOR RELATED QUESTIONS.

IN EACH PHASE CONNECT TO TAPS	
PRIMARY VOLTS	2-2.5% FCAN 4-2.5% FCBN
504	1
492	2
480	3
468	4
456	5
444	6
432	7



**TRANSFORMER SPECIFICATIONS:**

75 KVA 3Ø 60 HZ  
 PRIMARY VOLTAGE 480 DELTA  
 SECONDARY VOLTAGE 208Y/120  
 150 °C RISE ABOVE 40°C AMBIENT  
 220 °C INSULATION SYSTEM  
 COPPER WINDINGS  
 APPROXIMATE WEIGHT: 642 LBS  
 GUARANTEED SOUND LEVEL: 50 dB  
 EFFICIENCY @35%: 98.0% AVG. CONFORMS TO NEMA TP 1 - 2002 AND CSA C802.2

DUAL DIMENSIONS: INCHES  
MILLIMETERS

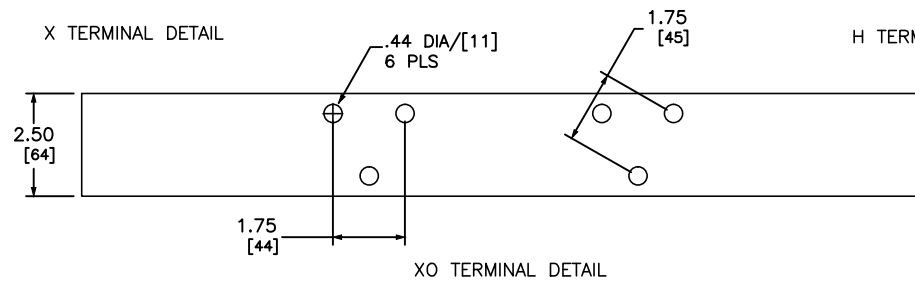
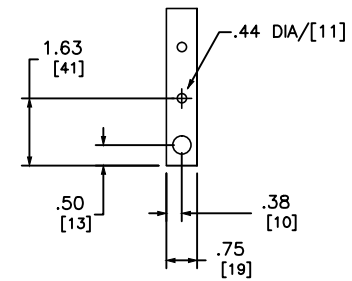
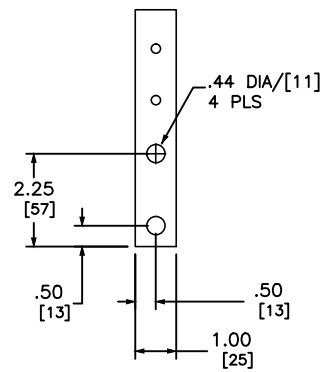
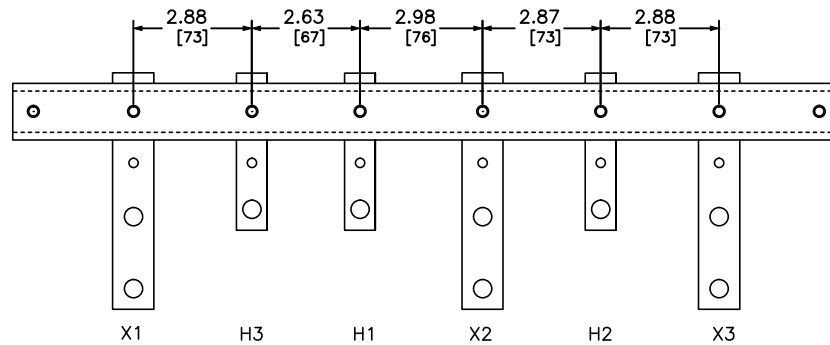
**NOTES:**

- 1) cULus LISTED (MEETING UL 1561 AND CSA C22.2)
- 2) NEMA 2 VENTILATED ENCLOSURE ENCLOSURE RATED FOR NEMA 3R WHEN OPTIONAL WEATHERSHIELD ACCESSORY IS INSTALLED.
- 3) MINIMUM CLEARANCE OF 3.00/[76] BETWEEN VENT OPENINGS, WALL OR OTHER OBSTRUCTION
- 4) SHADED AREAS DENOTE CUSTOMER CONDUIT ENTRANCE LOCATIONS, AVAILABLE BOTH SIDES AND BOTTOM

LOW VOLTAGE ENERGY EFFICIENT, TP1  
 DRY-TYPE TRANSFORMER  
 CATALOG NO EE75T3HCU  
 3 PHASE, 75KVA, CU  
 PRIMARY 480 DELTA ,SECONDARY 208Y/120



DWG# 6312-0015  
NO.



DUAL DIMENSIONS: INCHES  
MILLIMETERS

LOW VOLTAGE ENERGY EFFICIENT, TP1  
 DRY-TYPE TRANSFORMER  
 CATALOG NO EE75T3HCU  
 3 PHASE, 75KVA, CU  
 PRIMARY 480 DELTA ,SECONDARY 208Y/120



DWG# 6312-0015  
 NO.