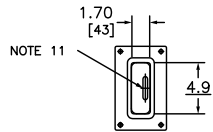
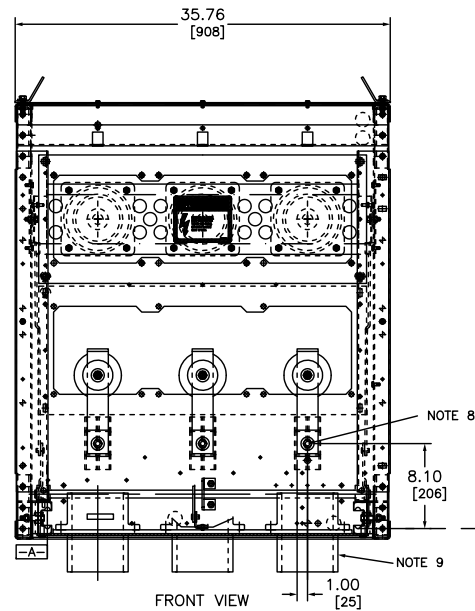


1. DATUM LOCATIONS:  
 -A- VERTICAL CENTERLINE OF LEFT GUIDE RAIL WHEEL GROOVE.  
 -B- BOTTOM EDGE OF GUIDE RAIL WHEEL GROOVE.

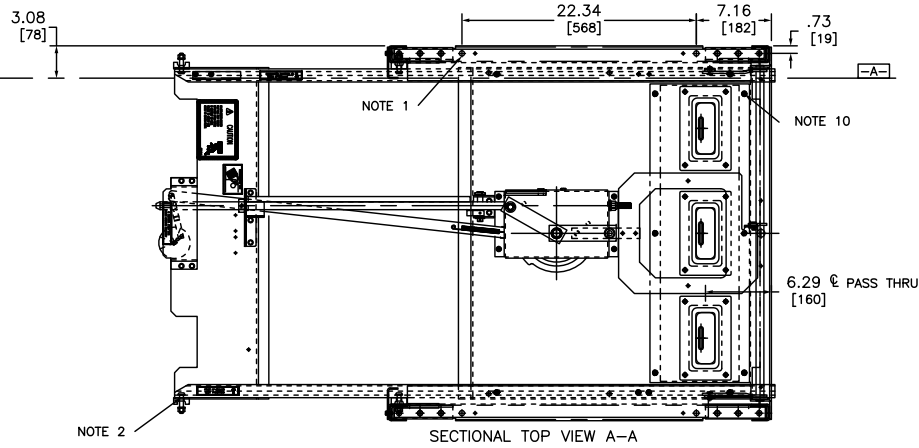
CATALOG NUMBERS	
FUSE CELL, 2 CONTACT SCU7-FC2	(SHOWN)
FUSE CELL, 3 CONTACT SCU7-FC3	



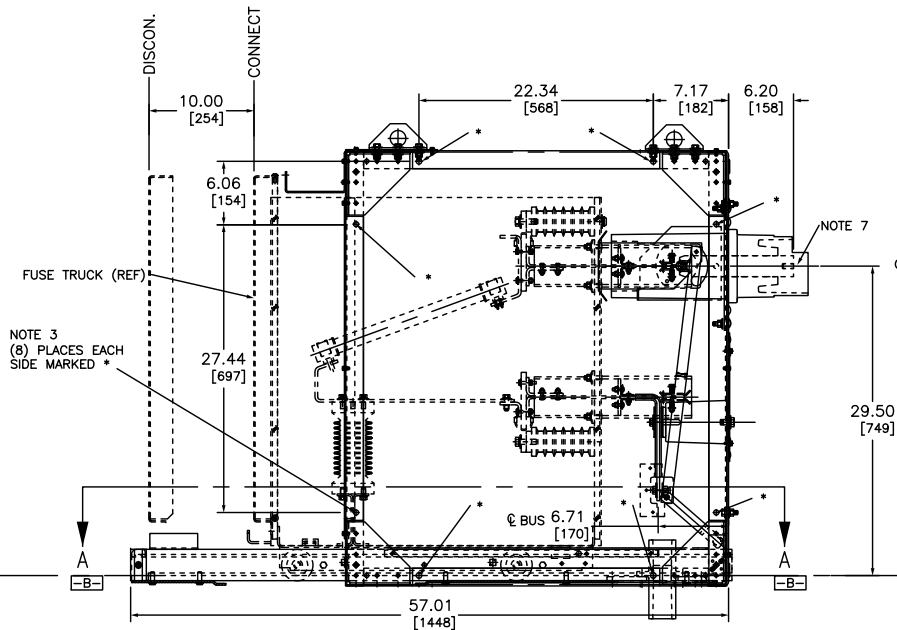
PASS THRU OPENING DETAIL



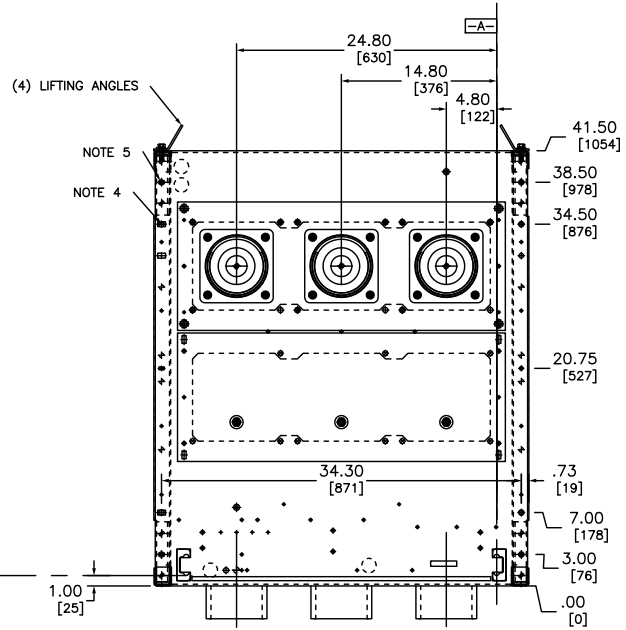
FRONT VIEW



SECTIONAL TOP VIEW A-A



REAR VIEW



(4) LIFTING ANGLES

NOTES:

- (4) .500/[13] DIA. HOLES (2 EACH SIDE) PROVIDED IN FLOOR ANGLES TO BE USED AS PROVISIONS FOR BOLTING OR WELDING OF OEM FRAME TO FOUNDATION.
- OEM TO PROVIDE SUPPORT AT THE FRONT OF THE LEFT AND RIGHT BREAKER RAILS. A .406/[10] DIA. HOLE IS PROVIDED IN THE SIDE RAILS FOR THE PURPOSE.
- (8) 3/8-16 THREADED INSERTS ARE PROVIDED ON EACH SIDE OF THE OEM FRAME TO ALLOW OEM MEANS FOR BOLTING ON SIDE SHEETS OR OTHER STRUCTURES.
- (4) .500/[13] DIA. HOLES ARE PROVIDED IN REAR OF FRAME TO ALLOW OEM A MEANS OF BOLTING ON BUS COMPARTMENTS OR OTHER STRUCTURES. HOLES ARE LOCATED AT 7.00/[1778] AND 34.50/[876].
- EXISTING HARDWARE FOR BOLTING BELL HOUSING IN PLACE IS LOCATED AT ELEVATIONS 3.00/[76], 20.75/[527] AND 38.50/[978]. OEM TO PROVIDE (6) .500/[13] DIA. CLEARANCE HOLES IN ANY STRUCTURE ATTACHING TO THE REAR OF THE FRAME.
- REFER TO DRAWING 46027-796 FOR TOP LEVEL ASSEMBLY. THIS DRAWING IS FOR ASSEMBLY PURPOSES AND IS NOT INTENDED FOR CUSTOMER DISTRIBUTION.
- 1/2-13 x 1.00/[25] DEEP TAPPED HOLE.
- .25/[6] x 2.00/[51] COPPER GROUND BUS WITH (1) .562/[14] x .750/[19] OBOURD HOLE FOR COPPER BUS OR CABLE CONNECTION. PLASTISOL BOOT PROVIDED. 1/2-13 BUS CONNECTION HARDWARE PROVIDED.
- PASS THRU SUB ASSY & MOUNTING HARDWARE SHIPPED LOOSE AND TO BE FIELD/SITE INSTALLED USING 1/4-20 SELF TAPPING HARDWARE (PROVIDED).
- ATTACH PASS THRU SUBASSY TO FLOOR USING (6) 1/4-20 SELF TAPPING SCREWS.
- PLASTISOL INSERT WITH OPENING FOR .25/[6] x 2.00/[51] BUS PROVIDED (IF REQ'D).

OEM  
 ONE HIGH CRADLE  
 UPPER-AUX-CPT



DWG# 46027-852  
 NO.