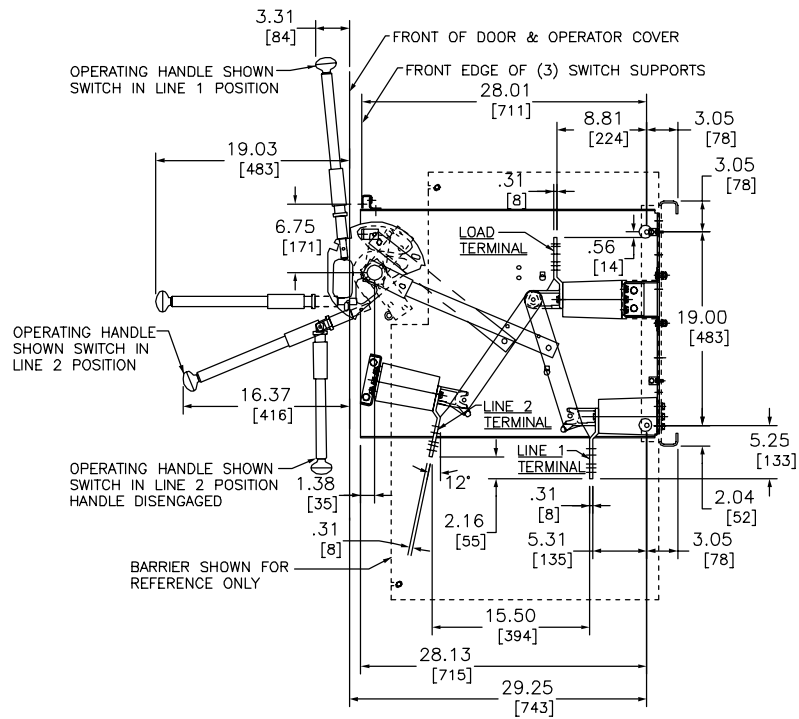
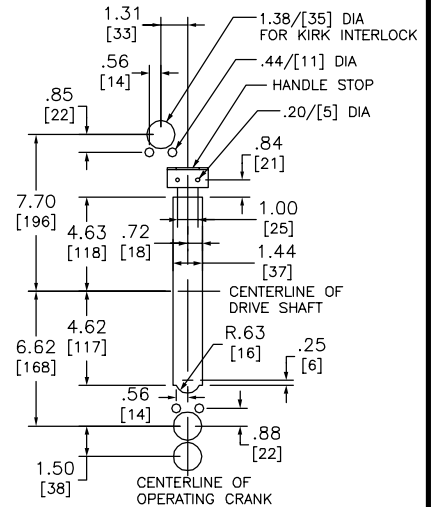


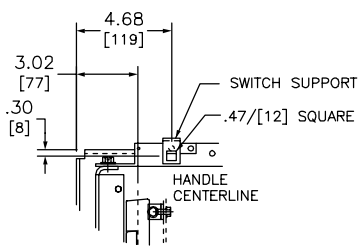
FRONT VIEW



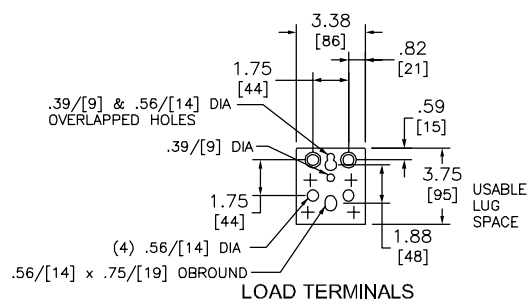
SECTION VIEW A-A



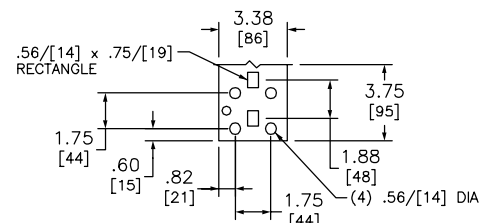
HANDLE OPENING REQUIRED IN OEM'S PANEL



DETAIL B



LOAD TERMINALS



LINE TERMINALS

DUAL DIMENSIONS: INCHES MILLIMETERS

OUTLINE
HVL SELECTOR SWITCH
OEM INVERTED
4.76 kV & 15.0 kV
600A, 61 kA



DWG# 44041-766-00
NO.