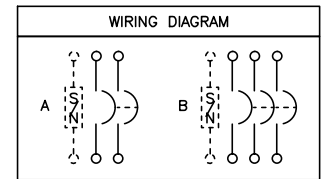


SEISMIC NOTES:  
 USE (4) 1/4" DIA GRADE 5 STEEL MOUNTING BOLTS @ HOLES AA  
 MAX CONFIGURED WEIGHT 130 LB FOR THE PURPOSE OF DETERMINING  
 SEISMIC ANCHORAGE REQUIREMENTS. FOR ALL OTHER APPLICATIONS,  
 CONTACT SCHNEIDER ELECTRIC.



CIRCUIT BREAKER TERMINAL LUG DATA					
CIRCUIT BREAKER CATALOG NO. PREFIX	AMPERE RATING	CONDUCTORS PER PHASE	WIRE SIZE (AWG/KCMIL)		TYPE
			MAX	MIN	
MGL,MJL, PGL,PJL,PKL,PLL	300-800A 250-800A	3	500	3/0	AL OR CU

FIELD INSTALLABLE NEUTRAL ASSEMBLIES AND GROUND KIT						
CATALOG NUMBER	MAXIMUM AMPERE RATING	NUMBER OF TERMINALS	CONDUCTORS PER TERMINAL	WIRE SIZE (AWG/KCMIL)		TYPE
				MAX	MIN	
AL800SN	800A	6 (3 IN-3 OUT)	1 2 ●	500 250	3/0 6	AL OR CU
* S33576 AND S33576MK	800A	8 (4 IN-4 OUT)	1 2 ●	500 300	3/0 4	
PKOGTA4 ▲	-	4	1	300	6	

DUAL DIMENSIONS: INCHES  
MILLIMETERS

M800AWK  
 NEMA/EEMAC TYPE 3R, 5 OR 12  
 GRAY BAKED ENAMEL ELECTRODEPOSITED OVER CLEAN PHOSPHATIZED STEEL  
 cULus-FILE E-136861 CE MARKED


M800DS  
 NEMA/EEMAC TYPE 3,3R,4,4X,5 OR 12  
 TYPE 304 STAINLESS STEEL  
 cULus-FILE E-136861 CE MARKED

M800SS  
 NEMA/EEMAC TYPE 3,3R,4,4X,5 OR 12  
 TYPE 316 STAINLESS STEEL  
 UL LISTED-FILE E-136861 CSA CERTIFIED-FILE #LL89067

NOTES:  
 SUITABLE FOR USE AS SERVICE EQUIPMENT WHEN NEUTRAL ASSEMBLY IS INSTALLED.  
 ENCLOSURE SUPPLIED WITH DUAL COVER INTERLOCK  
 NEUTRAL - INSULATED GROUNDABLE.  
 THE SHORT CIRCUIT CURRENT RATING OF THIS ENCLOSED CIRCUIT BREAKER, INDICATED ON CHART ABOVE, MAY BE LESS THAN THE AIR RATING INDICATED ON THE INSTALLED CIRCUIT BREAKER.  
 \* NEUTRAL AND NEUTRAL CT FOR USE ON INTEGRAL GROUND FAULT APPLICATION. APPLICABLE ONLY TO P-FRAME 400-800A.  
 ● NUMBER OF TERMINALS FOR SERVICE GROUND CONDUCTORS.  
 ▲ GROUND KIT.  
 ■ STANDARD OR 100% RATED, 800A MAX.

FIELD INSTALLABLE CIRCUIT BREAKER DATA										
CIRCUIT BREAKER CATALOG NO. PREFIX	WIRING DIA	AMPERE RATING	UL LISTED INTERRUPTING RATING RMS SYMMETRICAL AMPERES						FEDERAL SPECS W-C-375B/GEN	
			AC VOLTAGE			DC VOLTAGE				
			240	480Y/277	480	600	125	250		600
MGL	A B	300-800	65K	35K	35K	18K	-	-	-	X
MJL	A B	300-800	100K	65K	65K	25K	-	-	-	X
PGL	■ A B	250-800	65K	35K	35K	18K	-	-	-	X
PJL	■ A B	250-800	100K	65K	65K	25K	-	-	-	X
PKL	■ A B	250-800	65K	50K	50K	50K	-	-	-	X
PLL	■ A B	250-800	125K	100K	100K	25K	-	-	-	X

CIRCUIT BREAKER ENCLOSURES - SEISMIC  
 250-800 AMPERE  
 ENCLOSURE - NEMA/EEMAC TYPE 3R, 5 OR 12 INDUSTRIAL  
 NEMA/EEMAC TYPE 3, 3R, 4, 4X 5 OR 12 STAINLESS STEEL

  
 by Schneider Electric  
 DWG# 3438S  
 NO.