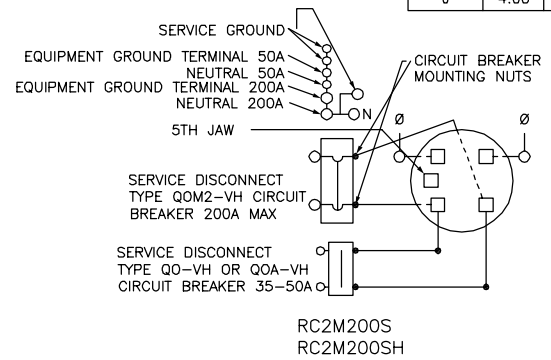
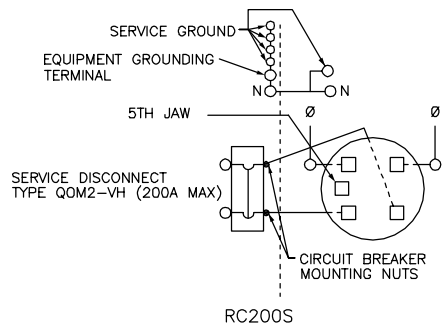


KNOCKOUTS		
SYMBOL	CONDUIT SIZE	
	IN	MM
A	.50	13
B	.75	19
C	1.00	25
D	1.25	32
E	1.50	38
F	2.00	51
G	2.50	64
H	3.00	76
I	3.50	89
J	4.00	102



DUAL DIMENSIONS: INCHES MILLIMETERS

AMPERE RATING	BYPASS TYPE	MAXIMUM SYSTEM VOLTAGE	SHORT CIRCUIT CURRENT RATING	CATALOG NUMBER	SERIES	LINE SIDE PHASE AND NEUTRAL LUGS AWG/KCMIL
200	NONE	120/240 VAC 1Ø 3W OR 208Y/120V (FROM A 3Ø 4W SYSTEM)	22K	RC200S	M02	#6-350 CU/AL
			22K	RC2M200S	M02	
	HORN		22K	RC2M200SH	M02	

NOTES:
 FINISH - GRAY BAKED ENAMEL POWDER COAT PAINT OVER CLEANED GALVANNEALED STEEL.
 UL LISTED - FILE E-6294, VOL. M
 SUITABLE ONLY FOR USE AS SERVICE EQUIPMENT.
 SUITABLE FOR OVERHEAD OR UNDERGROUND SERVICE.

COMBINATION SERVICE ENTRANCE DEVICES
 RINGLESS TYPE METER MAIN
 RAINPROOF NEMA TYPE 3R ENCLOSURE
 SURFACE ONLY



DWG# 3214
 NO.