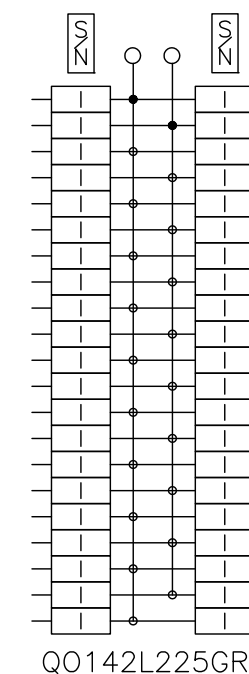
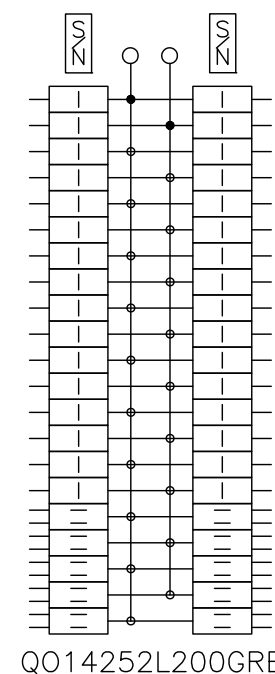
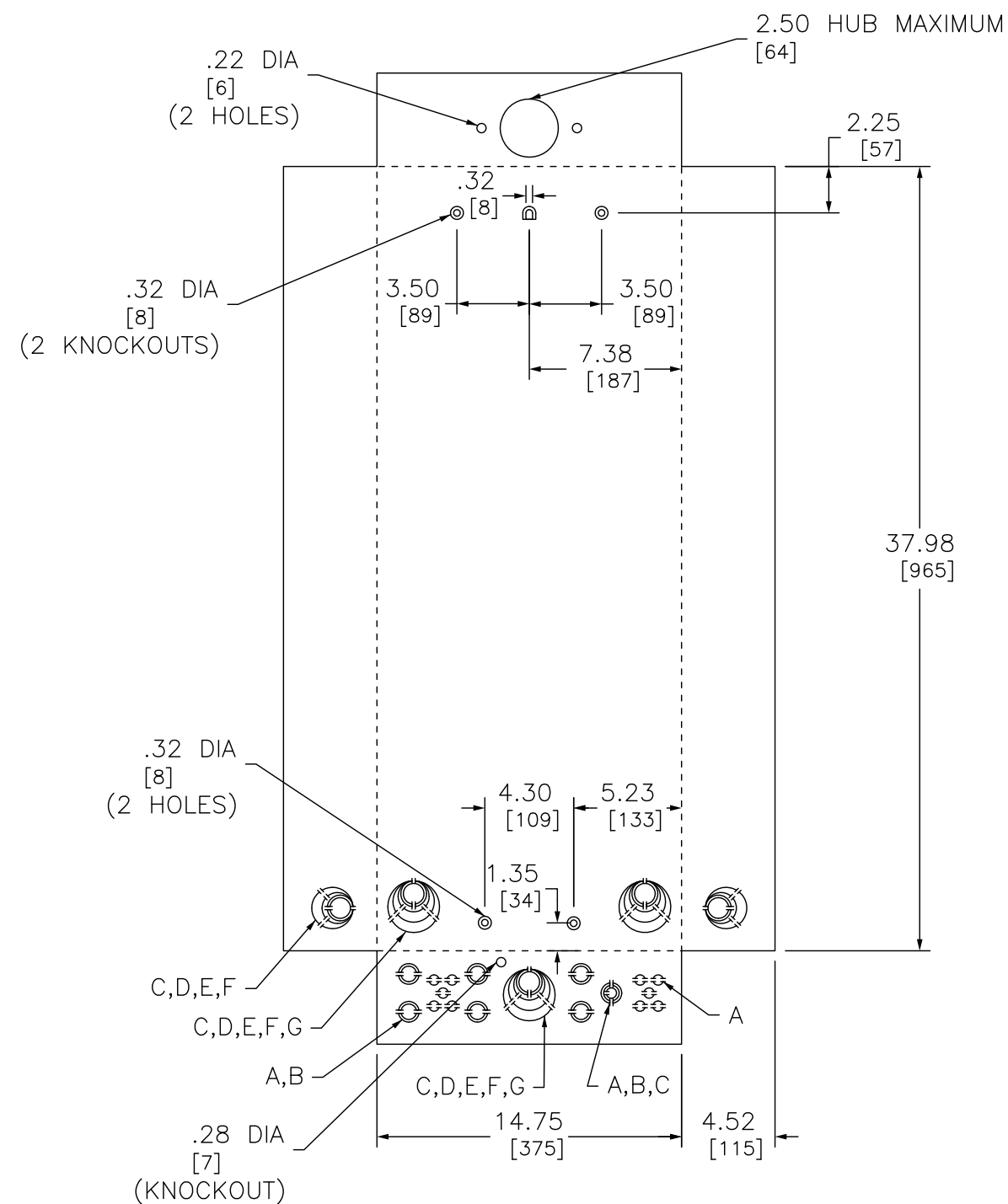


SYMBOL	KNOCKOUTS	
	CONDUIT SIZE IN	CONDUIT SIZE MM
A	.50	13
B	.75	19
C	1.00	25
D	1.25	32
E	1.50	38
F	2.00	51
G	2.50	64



DUAL DIMENSIONS: INCHES
MILLIMETERS

CATALOG NUMBER	MAXIMUM SYSTEM VOLTAGE	MAINS AMPERE RATING	SPACES	MAXIMUM NUMBER OF SINGLE POLE CIRCUITS	MAIN WIRE SIZE AWG AL/CU
QO14252L200GRB	120/240VAC 1Ø 3W	200	42	52	#4-300
QO142L225GRB		225	42	42	

NOTES:
 FINISH - GRAY BAKED ENAMEL ELECTRODEPOSITED OVER CLEANED PHOSPHATIZED STEEL.
 UL LISTED - FILE E-6294
 NEUTRALS - INSULATED GROUNDABLE.
 LOAD CENTERS WITH "G" IN CATALOG NUMBER INCLUDE A FIELD INSTALLABLE EQUIPMENT GROUND BAR KIT.
 WHEN MOUNTING THESE LOAD CENTERS, ALLOW 1.25 INCHES (32 MILLIMETERS) OF CLEARANCE ON HINGED SIDE FOR THE DOOR TO OPEN

QO LOAD CENTERS
 RAINPROOF NEMA TYPE 3R ENCLOSURE
 SIDE HINGED OUTDOOR

SQUARE D[™]
 by Schneider Electric

DWG# 3049
 NO.