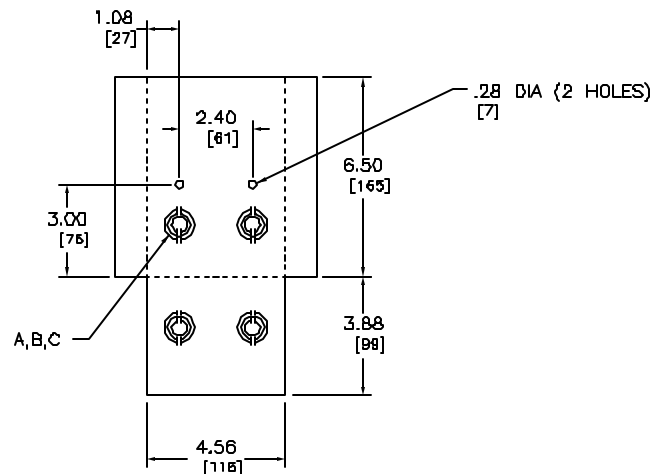



KNOCKOUTS			
SYMBOL	A	B	C
IN	.5D	.75	1.0D
MM	1.3	19	25



DUAL DIMENSIONS: INCHES
MILLIMETERS

SERVICE	AMPERE RATING	RAINFOOF NEMA TYPE 3R	MOLDED CASE SWITCH		TERMINAL LUG WIRE SIZE AWG
			CATALOG NUMBER	TERMINAL LUG WIRE SIZE AWG AL/CU	GROUNDING TERMINALS
 240VAC	80A MOLDED CASE SWITCH ◆	QO200TR	QD200 (INCLUDED)	#14-4 ▲	#4-#8 AL/CU

- NOTES:
 FINISH - GRAY BAKED ENAMEL ELECTRODEPOSITED OVER CLEANED PHOSPHATIZED STEEL.
 UL LISTED - FILE E-58921
 ▲ LOAD TERMINALS - USE #6 MAX.
 ◆ MAXIMUM 10 HP, 240VAC
 ● NOT SUITABLE FOR SERVICE EQUIPMENT.
 TOP ENDWALL HAS NO HUB OPENING, BACK AND BOTTOM FEED ONLY.

QO LOAD CENTERS
 RAINFOOF ENCLOSURE
 ENCLOSED MOLDED CASE SWITCH DEVICES

 **SQUARE D COMPANY**

DWG# 3031
 NO.