

TANGENT KNOCKOUT  
(DIMENSION ON DRAWING TO CENTERLINE OF "A" KNOCKOUT)

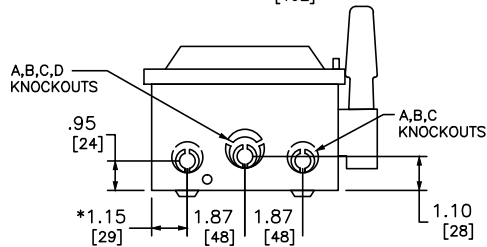
TYPE 1

SEISMIC NOTES:  
USE (4) 1/4" DIA GRADE 5 STEEL MOUNTING BOLTS @ HOLES AA  
MAX CONFIGURED WEIGHT 10 LB FOR THE PURPOSE OF DETERMINING  
SEISMIC ANCHORAGE REQUIREMENTS. FOR ALL OTHER APPLICATIONS,  
CONTACT SQUARE D COMPANY.

WIRING DIAGRAMS	
FUSIBLE	NOT FUSIBLE

TERMINAL LUGS			
AMPERES	MAX WIRE	MIN WIRE	TYPE
30	#6 AWG	#14 AWG	AL OR CU

KNOCKOUTS				
SYMBOL	CONDUIT SIZE		DIAMETER	
	IN	MM	IN	MM
A	.50	13	.88	22
B	.75	19	1.13	29
C	1.00	25	1.38	35
D	1.25	32	1.75	44



\*DIMENSIONS TO BOX (NOT COVER)

DUAL DIMENSIONS: INCHES  
MILLIMETERS

CATALOG NUMBER	VOLTAGE RATINGS	AMPERAGE RATINGS	WIRING DIAG	HORSEPOWER RATINGS														
				240VAC				480VAC				600VAC				250 VDC	600 VDC	
				STD		MAX		STD		MAX		STD		MAX				
1Ø	3Ø	1Ø	3Ø	1Ø	3Ø	1Ø	3Ø	1Ø	3Ø	1Ø	3Ø	STD	MAX					
CH221N	240VAC,250VDC	30	A	1 1/2	3	3	7 1/2	-	-	-	-	-	-	-	5	-	-	-
CH321N	240VAC,250VDC	30	B	1 1/2	3	3	7 1/2	-	-	-	-	-	-	-	5	-	-	-
CH361	600VAC,600VDC	30	B	-	-	-	-	3	5	7 1/2	15	-	7 1/2	-	20	5	10	15
CH361N	600VAC,600VDC	30	B	-	-	-	-	3	5	7 1/2	15	-	7 1/2	-	20	5	10	15
CHU361	600VAC,600VDC	30	C	-	-	5	10	-	-	7 1/2	20	-	-	10	30	5	15	15
CHU361EI	600VAC,600VDC	30	C	-	-	5	10	-	-	7 1/2	20	-	-	10	30	5	15	15

- NOTES:  
 CSA CERTIFIED - FILE # LL-89067  
 ALL NEUTRALS - INSULATED  
 FUSIBLE SWITCHES ARE SUITABLE FOR USE AS SERVICE EQUIPMENT.  
 ● USE BOTH OUTER SWITCHING POLES  
 ● USE BOTH SWITCHING POLES  
 ■ IF CORNER GROUNDED DELTA, INSTALL NEUTRAL AND USE OUTER SWITCHING POLES FOR UNDERGROUNDED CONDUCTORS.  
 † FOR CORNER GROUNDED DELTA ONLY, USE OUTER SWITCHING POLES FOR UNDERGROUNDED CONDUCTORS.  
 SUFFIX EI, E12 - FACTORY INSTALLED AUXILIARY INTERLOCK  
 SUFFIX J1, J2 VOLTAGE INDICATOR ON LOAD SIDE OR LINE AND LOAD SIDE  
 SUFFIX VW, VIEWING WINDOW

HEAVY DUTY SAFETY SWITCHES - SEISMIC  
 VISIBLE BLADE TYPE  
 30 AMPERE  
 ENCLOSURE - TYPE 1 GENERAL PURPOSE



DWG# 2228SC  
NO.