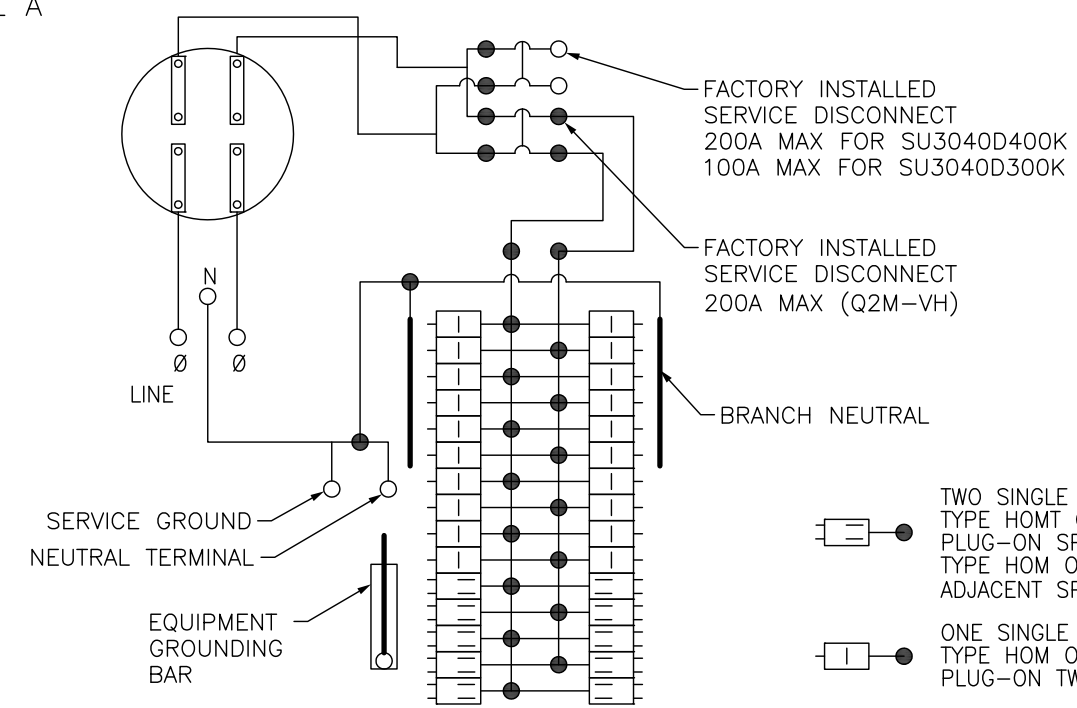
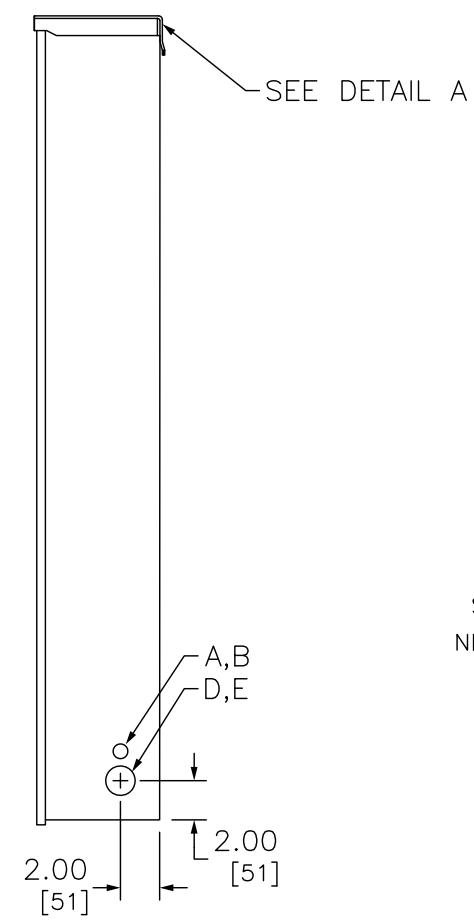


SYMBOL	CONDUIT SIZE	
	IN	MM
A	.50	13
B	.75	19
C	1.00	25
D	1.25	32
E	1.50	38
F	2.00	51
G	2.50	64
H	3.00	76
I	3.50	89
J	4.00	102



- TWO SINGLE POLE, ONE PLUG-ON SPACE TYPE HOMT OR ONE SINGLE POLE, ONE PLUG-ON SPACE TYPE HOM. TWO POLE TYPE HOM OR HOMT MAY PLUG-ON TWO ADJACENT SPACES.
- ONE SINGLE POLE, ONE PLUG-ON SPACE TYPE HOM ONLY. TWO POLE TYPE HOM MAY PLUG-ON TWO ADJACENT SPACES

TYPE	POLES	AMPERE RATING	TYPE	AMPERE RATING	PANELBOARD SHORT CIRCUIT CURRENT RATING		
					SYMMETRICAMPERES RMS	VOLTS AC	PHASE
HOM	1	15-50	Q2M...VH	100-200	22,000	120/240	SINGLE
	2	15-70	Q2M...VH	100-200	22,000	120/240	SINGLE
HOMT	2	80-110	Q2M...VH	100-200	10,000	120/240	SINGLE
	1	15-20	Q2M...VH	100-200	22,000	120/240	SINGLE
	2	15-30	Q2M...VH	100-200	22,000	120/240	SINGLE

NOTES:
FINISH - GRAY BAKED ENAMEL POWDER COAT PAINT OVER CLEANED GALVANNEALED STEEL
SUITABLE ONLY FOR USE AS SERVICE EQUIPMENT.
SUITABLE FOR UNDERGROUND SERVICE ONLY.
UL - LISTED FILE E-6294, VOL M
CONVERTIBLE TO SEMIFLUSH WITH SU400F FLANGE KIT.
MEETS EUSERC SPECIFICATIONS.
◆ ORDER ONLY DEVICE

CATALOG NUMBER	SERIES	BYPASS TYPE	MAXIMUM SYSTEM VOLTAGE	AMPERE RATING	SPACES	MAXIMUM NUMBER OF SINGLE POLE HOM CIRCUITS	SHORT CIRCUIT CURRENT RATING	MAIN WIRE SIZE AWG/KCMIL AL/CU
SU3040D400K	M01	NONE	120/240VAC 1Ø 3W	400	30	40	22K/10K	SUPPLIED WITH LUG PADS - ORDER LUGS SEPARATELY
SU3040D300K ◆		NONE		300				

COMBINATION SERVICE ENTRANCE DEVICES
RINGLESS ALL-IN-ONE
RAINPROOF NEMA TYPE 3R ENCLOSURE
SURFACE/SEMIFLUSH



DWG# 1977
NO.