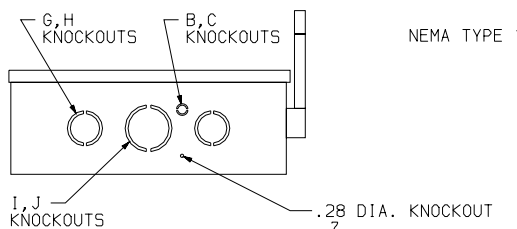


TERMINAL LUGS ‡

AMPERES	MAX. WIRE	MIN. WIRE	TYPE
600	(2) 500 KCMIL OR (1) 600 KCMIL	(2) #4 AWG	AL OR CU

KNOCKOUTS

SYMBOL	CONDUIT SIZE		DIAMETER	
	IN	MM	IN	MM
B	.75	19	1.13	29
C	1.00	25	1.38	35
G	2.50	64	3.00	76
H	3.00	76	3.62	92
I	3.50	89	4.12	105
J	4.00	102	4.62	117



NOTES:
 FINISH - GRAY BAKED ENAMEL.
 UL LISTED - FILE E-2875
 NEUTRAL - INSULATED GROUNDABLE.
 SUITABLE FOR USE AS SERVICE EQUIPMENT
 SHORT CIRCUIT CURRENT RATINGS:
 10,000 AMPERES WHEN USED WITH OR PROTECTED BY CLASS H OR K FUSES.
 ● 100,000 AMPERES WITH 300VAC CLASS T FUSES.
 ■ 100,000 AMPERES WHEN PROTECTED BY CLASS R OR J FUSES.
 ‡ LUGS SUITABLE FOR (2) #4 AWG-600 KCMIL (AL/CU). WIRE BENDING
 SPACE PROVIDED FOR (1) 600 KCMIL MAX. USE 75°C CONDUCTORS.

DUAL DIMENSIONS: INCHES
MILLIMETERS

CATALOG NUMBER	VOLTAGE RATINGS	WIRING DIAG.	HORSEPOWER RATINGS	
			240VAC	
			STD.	MAX.
D226N ■	240VAC	A	-	-
D326N ■	240VAC	B	75	150
D326NT ■	240VAC	B	75	-
DU326 ■	240VAC	C	-	150

GENERAL DUTY SAFETY SWITCHES
 VISIBLE BLADE TYPE
 600 AMPERE
 ENCLOSURE - NEMA TYPE 1 GENERAL PURPOSE



DWG. NO. 1879