

Wavepoint

Securely manage your fiber optic network —
from anywhere



Make the most of your energySM

Schneider
Electric[™]

Wavepoint

Share your fiber optic network data with all levels of users across your organization with Wavepoint, from Schneider Electric.

Do you manage your fiber optic network with a desktop application that you run between your desk and the telecom room? Don't let your fiber optic management application tie you to a desk and inefficient processes.

Imagine this scenario

A fault technician is in one of your points of presence (POPs) and has just run an optical time-domain reflectometer (OTDR) trace on a port to identify the distance of the fault location. This distance tells him how many feet down the circuit path the fault occurs, but little else. So he uses a personal device, such as a tablet or smartphone, to read a quick response (QR) code on the rack.

The device displays detailed information about the rack, and allows him to select a patch panel and a port where he can run an OTDR trace using that distance value. Using the value, the OTDR trace automatically tracks the path to the specified distance and returns a fault location with both an address and geographic coordinates. This might seem like science fiction, but it is a new, easy reality with Wavepoint.

You don't need to be a GIS guru

Wavepoint simplifies troubleshooting of an outside plant (OSP) issue for your network analysts. However, this lightweight Web application can be used by anyone who wants to view or query fiber optic data.

- A network planner who wants a current view of the network
- A splicer making changes inside a splice case
- A sales representative determining whether or not a potential customer's building is on-net



Wavepoint delivers fast, easy fiber optic network troubleshooting – and adds value across your entire enterprise

Wavepoint displays your fiber optic network geographically and also provides data in intuitive formats. View a circuit in a one-line diagram that displays the circuit starting point, end point, and all of the fiber optic elements in between. Plus, you can click any of those elements to view details about it and highlight it on the map.

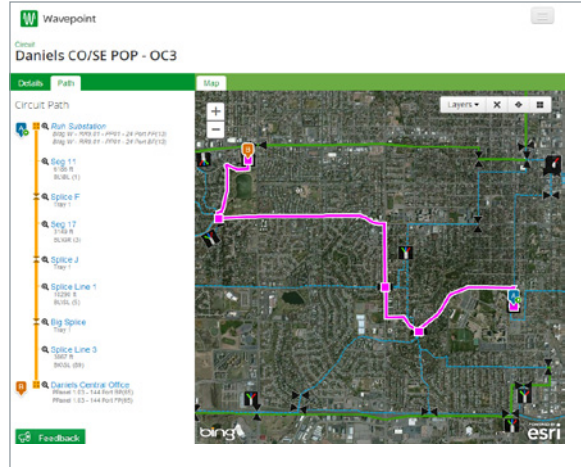
View an image of a rack, its patch panels, and the ports on the panels. Hover over a port to view its status and click it to launch a trace. Wavepoint was designed with the telecom user in mind. With Wavepoint's intuitive interface, you don't have to be geospatial information system (GIS) savvy to navigate your fiber optic network.

Security, everywhere you go

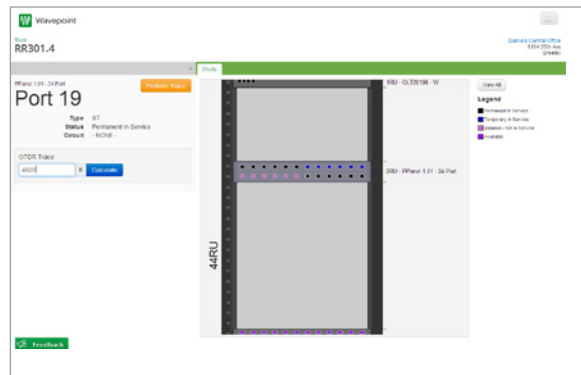
Built using HTML5 and Javascript, Wavepoint is accessible on any device with a Web browser and an Internet connection. This makes it simple and economical to distribute your fiber optic network information to multiple users across your organization.

At Schneider Electric, we take the security of your data seriously. We employ proven Web authentication and encryption methods to ensure that your data remains secure at all times. Your data resides on-premise in a secure map service created with ArcGIS Server. In addition, Wavepoint sits behind your firewall and requires authentication for users to access the application.

Your fiber optic management tool shouldn't chain you to a desk. View your fiber optic network securely from your desk or out in the field. Let Wavepoint get you out in world where your network lives.



Wavepoint's circuit view



Wavepoint's rack view

Schneider Electric USA, Inc.

4701 Royal Vista Circle
Fort Collins, CO 80528
Phone: 1-866-537-1091
Fax: 970-223-5577
www.schneider-electric.com/us