


SAGE 3030 Magnum

A high caliber and secure substation
automation platform



Make the most of your energySM

Schneider
 **Electric**

SAGE 3030 Magnum

Features

Two – Built-in 10/100 Mbps Ethernet® ports (independent IPs)

Optional – internal three port Ethernet switch

16 Built-in RS232 communications ports

Separate PPP port for serial dial-up

AMD LX-800 500 MHz CPU with 1 GB flash memory

Non Windows® OS

PC/104™ bus architecture

Browser based “UIF” User Interface Configuration Tool (Uses Internet Explorer®)
*no proprietary software required.

Optional – external digital, analog and SBO control output points

- Up to 224 digital / 5 msec. SOE / accumulator inputs
- Up to 64 T/C momentary and latching control outputs
- Up to 256 analog inputs

Wide range input power supply for standard substation voltages

Full three Year Warranty Standard

IP Sec Security

- HTTPS
- Encryption
- SSL/SSH
- Firewall

Over 100 LEDs for positive visual indications

- Power, Run, Reset, Local, Time Source Failed, IED Failed, User Logged In, Configuration Changed, RLL Running, Ethernet Link, and Alarm 1 and 2
- Communications LEDs (RX, TX, RTS, CTS, and DCD/+5V on each port)

Designed for Electric Utility applications

- Meet IEEE 472, ANSI C37.90 SWC
- Meet C37.90.1 standards

Rugged relay-style metal enclosure for easy rack mounting

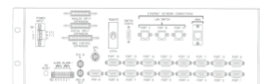
Optional – internal GPS receiver

Continuous IRIG-B output with built-in bus to all communication ports for IRIG-B, GPS, RTC, or protocol time synchronization

Complete MTU/ IED protocol library
(standard with every unit)



Front view



Rear view

Specifications

CPU/Memory	
Processor / Speed	AMDLX-800, 500 MHz
DRAM	256 MB
BB RAM	2 MB
Compact Flash	1 GB
Bios Flash	1 MB
Real Time Clock	±10 sec per day (115ppm)
Battery	3.0V Rechargeable Lithium Model BR2330A (Standby power for 10+ years)
User Interface	
Web Browser	Internet Explorer®
Ethernet	10/100BASE-T (RJ45)
PPP	38.4kbps (RS232)
Communications	
Ethernet	Two 10/100Base-T (RJ45)
Serial	Four RS232 (DB-9) Expands to 12
Console	RS232 (DB-9)
Dial-up	RS232 (DB-9)
Serial Speeds	300-115,000 bps
Protocols	Synchronous and asynchronous
3 Port Ethernet Switch – Option (Requires optional internal C3463 module)	
Logic Capabilities	
IEC 61131 compliant PLC runtime engine	
Power Requirements	
Input Voltage	120 VAC (85-264 VAC) 125 VDC (85-350 VDC) 24/48 VDC (20-60 VDC)
Input Power	35 Watts maximum
Input/Output Isolation	500 VDC
Visual Indications	
Communications	5 LEDs per RS232 port (DCD/+5V, RX, RTS, TX, CTS) Ethernet Link
Other Indications	Power, Run, Reset, Local/Remote, Time Source Failed, IED Failed, Alarm 1, Alarm 2, User Logged In, Config Changed, RLL Running LEDs
Alarm Outputs	
Contact Form	Form C
Max Output Points	2
Contact Ratings	30 VDC @ 2A
Environmental	
Operating Temperature	-40° to +85° C
Relative Humidity	5 percent to 95 percent, non-condensing
Transient Protection	All user field connections designed to pass: IEEE 472-1974, ANSI C37.90-1979 (R1982) ANSI C37.90.1-1989
Size	
Enclosure	19"x 10.5"x 5.25" metal box Fits standard 19"rack/relay panel
IRIG-B Input	
Modulated/Demodulated	Accepts IRIG-B signal through BNC format connector



Continued on back page

Specifications

IRIG-B Output	
Demodulated	Available on all 16 Communications
Ports	
Format	Pins 4&6 on RS232C (DB-9)
Demodulated	Available on BNC connector
GPS Receiver – Option (Requires optional C3461 internal module)	
RS232 Power	
5VDC	Configurable on all 16 Comm ports
Formats	Pin 1 on RS232C (DB-9)
Power Available	5W Max Total
Digital Inputs (Requires optional external termination (C3432) module)	
Used as Status/5 Millisecond SOE Inputs	
Isolation	Optically isolated, 1500VDC
Accuracy	5ms
Configuration	2 terminals per point (common ground)
Max Input Points	224
Power	129/48/24VDC (wetting from ext. PS)
XT Dimensions	32pts / 6.4x8 inch card
Used as Accumulator Inputs	
Accum. Formats	FA, FC (One or two counts/cycle)
Accum. Input Rate	20 pps max.
Max Input Points	112
SBO Control Outputs (Requires optional external termination (C3233) module)	
Duration	Software programmable in 5 msec increments
Momentary	KUP type 1FC/2FA 10A @ 240VAC or 10A @ 28VDC. KUEP type 1FC 3A @ 150VDC, 2FA 5A @ 150VDC, 1FX 10A @ 150 VDC.
Latching	KUL type 1FC/2FA 10A @ 240VAC or 10A @28VDC.
Relay Installation	Socketed
Max Output Points	64 T/C Pairs (128 coils)
XT Dimensions	4pts / 6.4x8 inch card
Analog Inputs (Requires optional internal and external termination (C3430) module)	
Input Type	Differential
Input Ranges	±5VDC, 0-5VDC, 1-5VDC, ±1mA, 0-1mA, 4-20mA, 10-50mA
Resolution	12 Bits (11 plus sign)
Accuracy	±0.25% FS between -40 to +85 C
Max Input Points	256
XT Dimensions	16pts/6.4x8 inch card

Schneider Electric USA, Inc.

14400 Hollister, Suite 400
Houston, TX 77066
Phone: 713-920-6801
Fax: 713-920-6909
www.schneider-electric.com/us