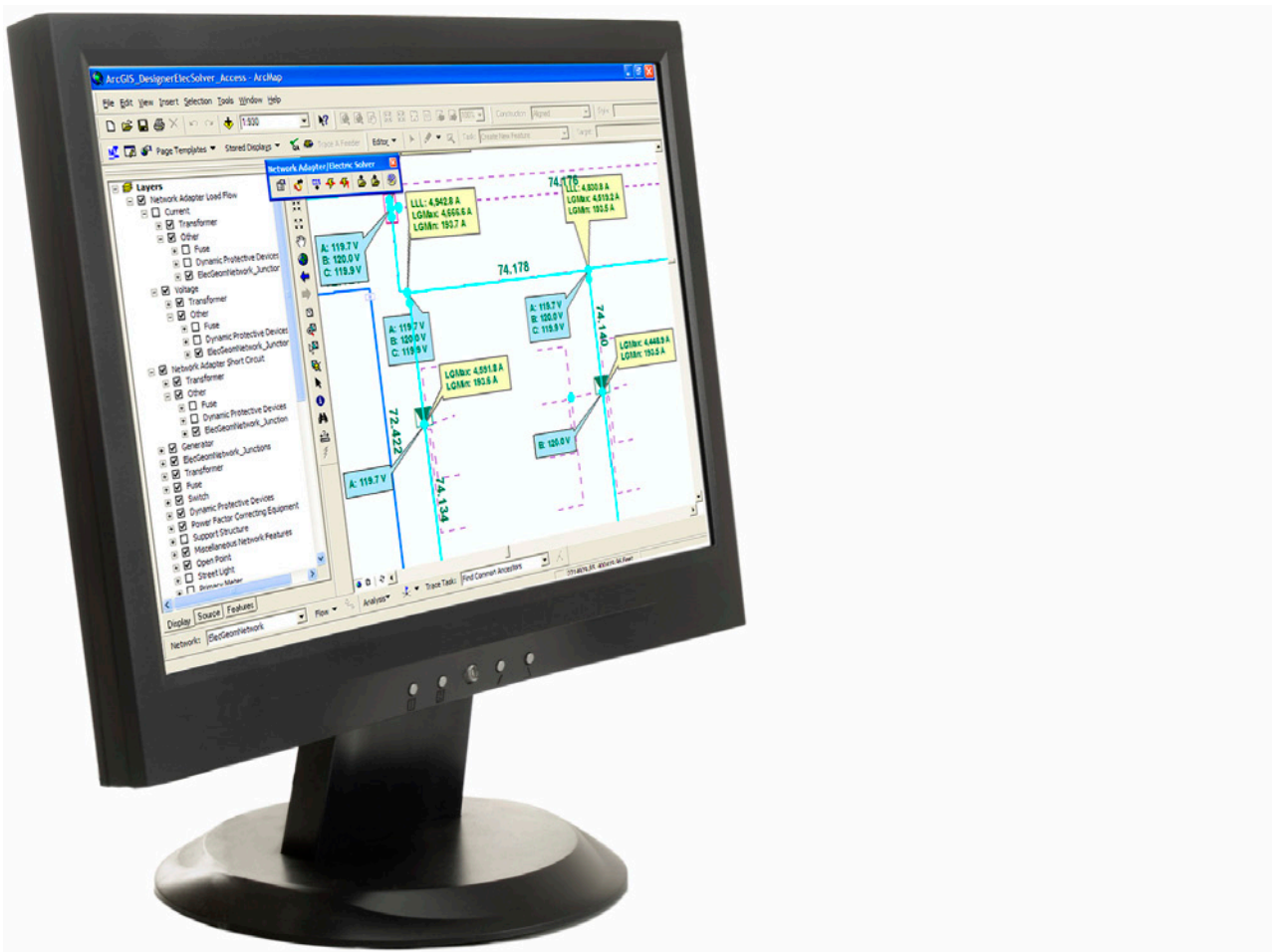


# ArcFM™ Network Adapter

Integrated Analysis Tool



Make the most of your energy<sup>SM</sup>

**Schneider**  
Electric™

# ArcFM Network Adapter

One of the key operations of utilities is to balance load across its network and plan for future expansion. It is crucial for utilities to have the ability to accurately analyze various scenarios and see how each may impact the existing network. Thus, network analysis is an integral process in the design and operation of a utility system. Some analysis examples include load flow, voltage drop, voltage flicker during motor starting, and transformer load balancing. Recognizing that many utilities already have a third-party analysis application, Schneider Electric has built ArcFM™ Network Adapter to support the integration of GIS with system planning tools.



Network Adapter eliminates the need to maintain data in two separate systems.

Network Adapter is an interface between the ArcFM solution and third-party modeling and planning applications or analysis engines. Network Adapter provides tools to extract a model from the GIS and load the data to an analysis engine via XML. Network Adapter also extracts results from the analysis engine and displays them in any ArcFM solution application including ArcFM, Designer, and Responder. Thus, as feeders are modified, planners can quickly analyze the feeder with the analysis software and display the results in a GIS environment. Network Adapter eliminates the need to maintain data in two separate systems. The corporate GIS database becomes the system-of-record for all network information.

Standard templates for CYME's CYMDIST, Milsoft's WindMil, and GL's (Advantica Stoner) Electric Solver are included with the Network Adapter installation. Network Adapter is also MultiSpeak2 compliant.

Network Adapter for Schneider Electric ADMS is accessed as a stand-alone tool leveraging ArcGIS Engine Runtime. It allows you to export a particular feeder (or multiple feeders) from a geodatabase using a MultiSpeak XML format. Schneider Electric ADMS and this implementation of Network Adapter are part of Schneider Electric's Smart Grid Solution.



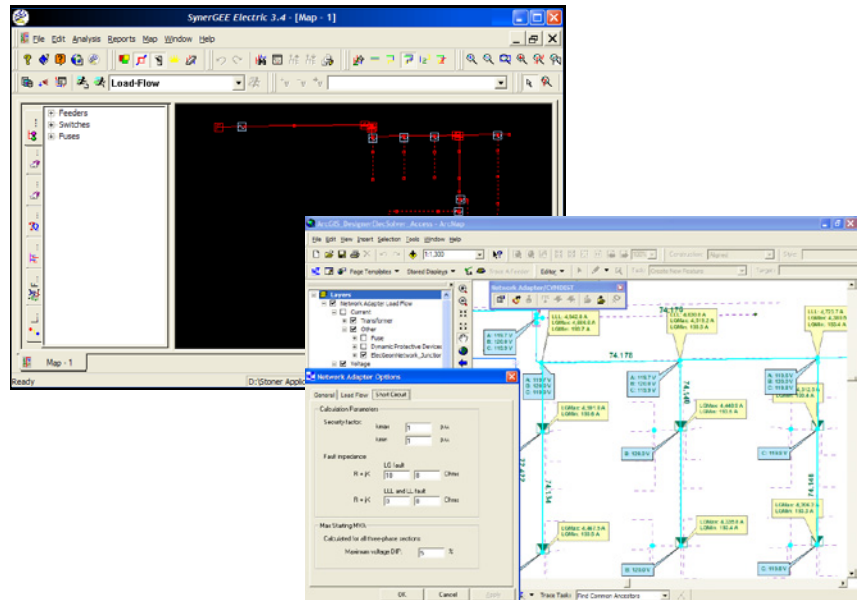
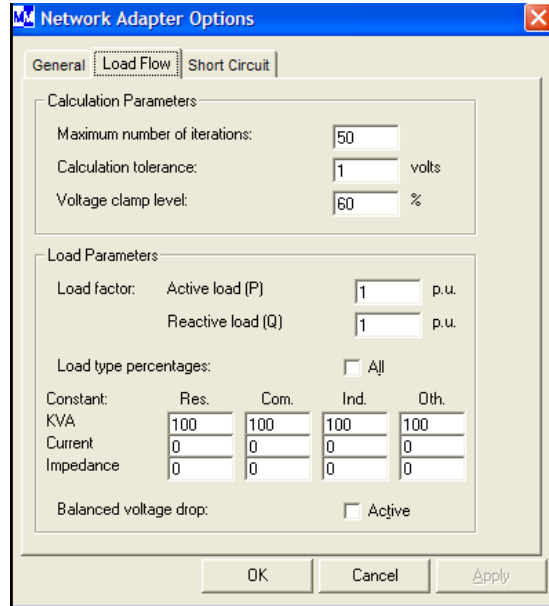
Reduced operating costs and improved customer service create a powerful business case for Network Adapter as part of your ArcFM solution.

Network Adapter allows planners and designers to:

- Perform calculations within the GIS environment and display results graphically on the GIS map
- Save previous calculations for future reference
- Create what-if scenarios by running the analysis in a version designated for study purposes
- Integrate GIS and third-party calculation engine's for a convenient, easy-to-manage solution.

Reduced operating costs and improved customer service create a powerful business case for Network Adapter as part of your ArcFM solution. Network Adapter offers these cost-effective benefits:

- Improves efficiency of engineering and operations through integration of key systems
- Provides analysis data quickly to support more effective engineering decisions and improve overall system efficiency
- Decreases system administration costs through the use of a single central database for network maintenance and analysis
- Leverages investment in the GIS database by adding functionality for system planning purposes



**Schneider Electric USA, Inc.**

4701 Royal Vista Circle  
Fort Collins, CO 80528  
Phone: 1-866-537-1091  
Fax: 970-223-5577  
[www.schneider-electric.com/us](http://www.schneider-electric.com/us)