

ArcFM™ Design

Streamline your engineering process from design to install

Make the most of your energySM

Schneider
Electric™

ArcFM™ Design

A single, comprehensive solution that improves design efficiency and reduces as-built changes

In many distribution and engineering planning groups, staff with varying skill sets use a diverse set of tools to perform tasks. Frequently, these tools do not work seamlessly with the utility's GIS platform, creating redundant data management processes, duplication of efforts and workflow backlogs. For instance, new construction needs to be incorporated with work management systems (WMS) to keep asset records and inventory up to date. Design processes need to be coordinated with the GIS. These inefficiencies create costly project management headaches, hindering the sharing of mission-critical information between enterprise applications and compromising data integrity.

At Schneider Electric, we offer ArcFM Design to help you overcome these challenges. ArcFM Design is a comprehensive graphic work design solution that lets utilities create, build and analyze new construction designs in a single application. It combines WMS and GIS integration with engineering analysis tools to meet the specific needs of medium and large electric distribution utilities.

Streamlined graphic design and so much more

Throughout the project life cycle, ArcFM Design keeps the entire project organized and up to date, managing both the design documents and asset data. All compatible units, extended data, work locations, and graphic work are stored with the design, including records of installs, removes, and transfers. You can even account for external factors, such as hot or cold weather, heavy traffic or contract crews.

Users can create construction work sketches and prepare cost estimates, as well as manage multiple designs, design versions, work requests and input from employees. It does this through seamless access to your WMS and enterprise resource planning (ERP) tools — providing detailed work request, scheduling, and materials cost information.

Within the GIS database, you can view, query, and edit designs without copying files on the network. The solution comes standard with a flexible workflow process tool that can operate as a standalone or an integration point in your work management system.



ArcFM Design streamlines your design, estimating, construction and as-built workflow process.

A closer look

With its powerful data management and quality assurance features, ArcFM Design is the ideal application for all of your design, building and analysis needs, from simple to very complex projects.

GIS integration saves money and time

ArcFM Design establishes a single point of entry for all asset information and includes a comprehensive set of construction drawing tools, compatible unit management functions and engineering tools.

- ArcFM Design is an extension of ArcFM Network so it works on the same data model as your GIS, greatly reducing implementation and maintenance costs.
- Because it operates on the same GIS data model as the ArcFM Network, ArcFM Design reduces your total cost of ownership.

Improve design efficiencies

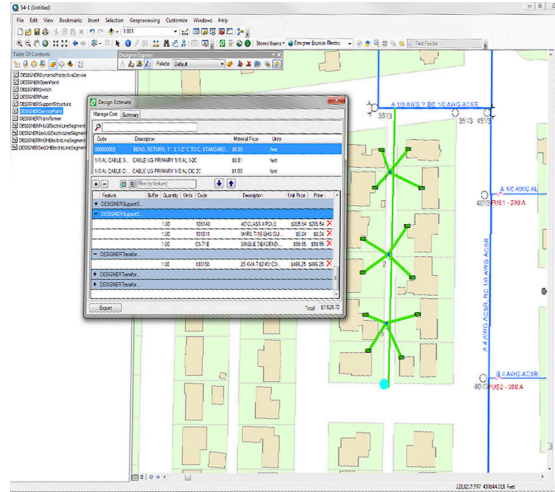
Integrate design with your WMS so new services areas are easily and seamlessly integrated into the GIS.

- Minimize application redundancies by building and analyzing designs with one solution.
- Editing proficiency tools allow designers to complete repetitive tasks quickly and accurately while ensuring consistent data and adherence to design standards.
- Integrate design and planning work with other important, GIS-driven applications, such as your outage management system (OMS) and distribution management system (DMS).

Enhance network model management

Reduce the backlog between completing job construction and updating the network model by ensuring timely updates are made based on GIS-enabled design and analysis.

- Improve the quality of information exchanges between third-party analysis applications and real-time systems and network model.
- Design is optimized based on utility-defined engineering standards and cost.



Easily support different users

Fit the needs of all users across the organization.

- Robust capabilities provide GIS-trained designers with the flexibility and control to easily design new service areas that leverage the existing GIS.
- Simple, intuitive tools give non-GIS professionals what they need to quickly sketch designs independently of the GIS.

Improve regulatory compliance

Ensure your overhead designs meet regulatory compliance with preconfigured sets of rules and regulations, or import your utility-specific ones.

- Eliminate the need for external engineering analysis system to ensure conformance to safety and regulatory criteria and another application to integrate overhead designs with the GIS.
- Avoid bookshelves of rules and regulations.

The Schneider Electric ArcFM Solution

ArcFM Design is one component in the ArcFM Solution, a comprehensive enterprise GIS platform used by electric, gas and water utilities to efficiently plan, design and reliably operate their infrastructure to deliver service to customers. With capabilities that include spatial asset management, network planning and analysis, operational awareness, field mobility and seamless integration with key enterprise systems, the ArcFM Solution drives reduced operating costs and higher standards of customer service.

Schneider Electric USA, Inc.

4701 Royal Vista Circle
Fort Collins, CO 80528
Phone: 1-866-537-1091
Fax: 970-223-5577
www.schneider-electric.com/us