



## **The Experience is the Difference** *Plug into the flexibility of VideoXpert™*

Historically video management systems by nature are complex – a complexity that often overwhelms the user experience, resulting in a steep learning curve and misplaced focus.

### **VideoXpert is different.**

Its intuitive design and easy-to-navigate workflow effortlessly display what's needed, when it's needed, allowing security professionals to make fast, effective decisions that drive your business forward.

Coupled with its powerful integration capabilities, VideoXpert leverages the expertise of third party providers for customizable functionality and maximum flexibility. Experience the ease of use, reliability and performance you demand.

Learn How » [Pelco.com/VideoXpert](http://Pelco.com/VideoXpert)

# **PELCO**

by **Schneider Electric**

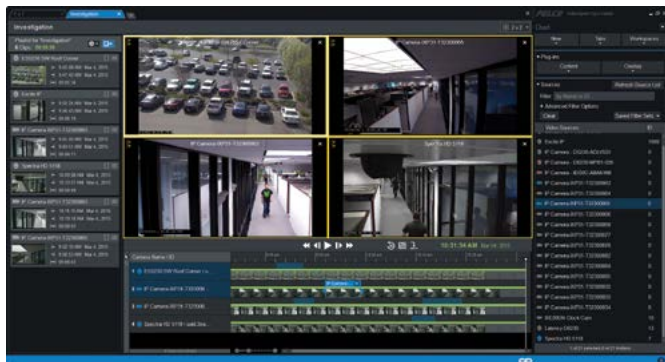
## **+** *At a Glance*

- Ground breaking user experience
- Intuitive design
- Third party plug-in architecture
- Scale through modularity
- Deploy as a software solution or with the convenience of Pelco hardware.
- Easy migration for existing Pelco customers

**Choose with Confidence.**

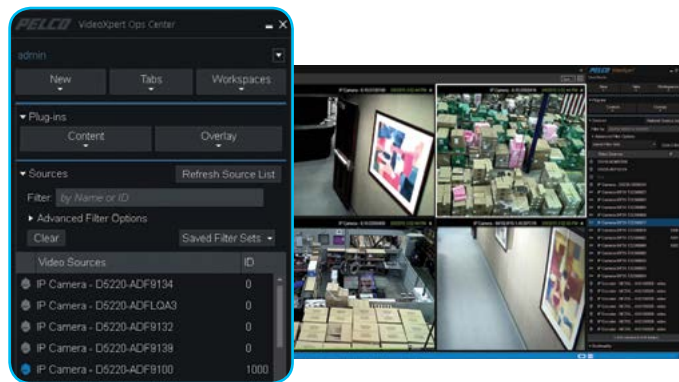
## Unified User Interface

- Draggable UI elements, reorganize your workspace on the fly
- Tag based organization
- Browser-like interface utilizes tab views for a single source UI experience
- Independent displays operate seamless workspaces with views that can be shared with other users
- Unique video data is accessible via a centralized location and retrievable utilizing sequencing, alarm tabs and event viewer features.



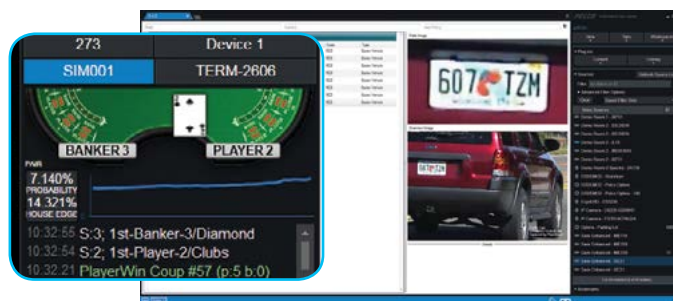
## Third Party Plug-ins

- Integrated solution with strategic partners, accessible through VideoXpert's single user interface
- Overlay video with critical business data
- Unify operational and security data over system video
- Extensible functionality through partner integration



## Incident and Events Management

- Shorten response time with customized event alerts and real-time visual notification of alarms via Event Viewer
- Synchronize video and highlight clips of interest using Bookmarks to capture a scene from multiple angles
- Utilize the powerful Investigation engine to quickly locate and collate video to create a surveillance story, that can be exported with ease for rapid response



## Immersive Experience

- Integration with Optera™ cameras provides an immersive, 180°, 270°, and 360° view
- iPTZ during live or recorded video
- Full resolution panoramic & immersive views provide a truly seamless experience

## Ultimate Reliability

- Support VXS Failover and Redundant recording to maximize system uptime
- Maximize display capabilities via Enhanced Decoder
- Designed to maximize uptime and availability of video on any hardware platform

## Centralize Video Management

- Aggregate multiple video management systems into a single interface with VideoXpert
- Through aggregation, build and maintain a concerted video management system with distributed and disparate resources across networks.

## Planned Migration

- Migrate current Endura® and Digital Sentry® hardware and environments to VideoXpert
- Expand retention time while minimizing downtime with Archive Storage
- Efficiently and modularly scale storage, independent from other VXS modules

Contact the sales representative in your area today, or visit [pelco.com](http://pelco.com) to download complete specification sheets.

©2016 Schneider Electric. All Rights Reserved. Trademarks owned by Schneider Electric Industries SAS or its affiliated companies. All other trademarks are property of their respective owners.  
www.schneider-electric.com