


# Introducing Schneider Electric’s New Row Data Center Designer Tool



**Row Data Center Designer**

A tool for designing row-based data center solutions

[Configure](#)

Schneider Electric is adding to our industry leading portfolio of configuration tools with a new designer for row-based data center solutions. This new tool allows users to configure a variety of solutions including racks, power, cooling, software, and services. The compatibility rules and engineering validation are built in to give you the peace of mind your solution will be the right one for your customer.

- This initial release will include support for strategic offers and functionality focused on a new “Guided Row” approach”.
- We are releasing it only in Europe, International and Hong Kong.
- Additional launches will follow in 2022 to extend the scope to include the full set of offers and functionality to support our EcoStruxure Row Data Center solutions.

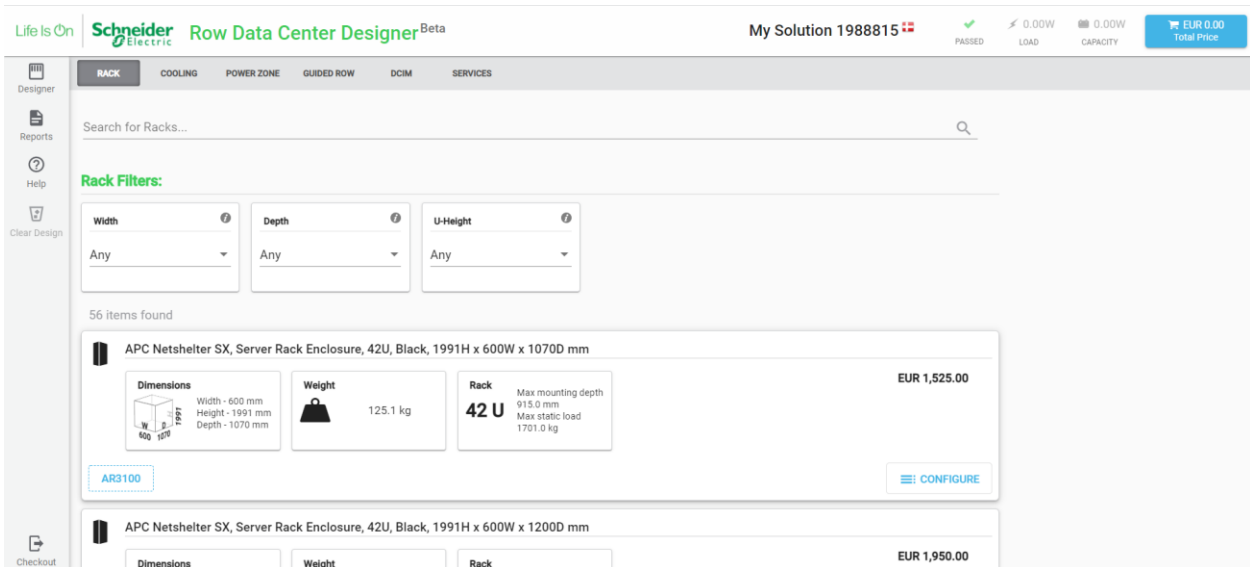


Fig1: Row Data Center Designer Layout

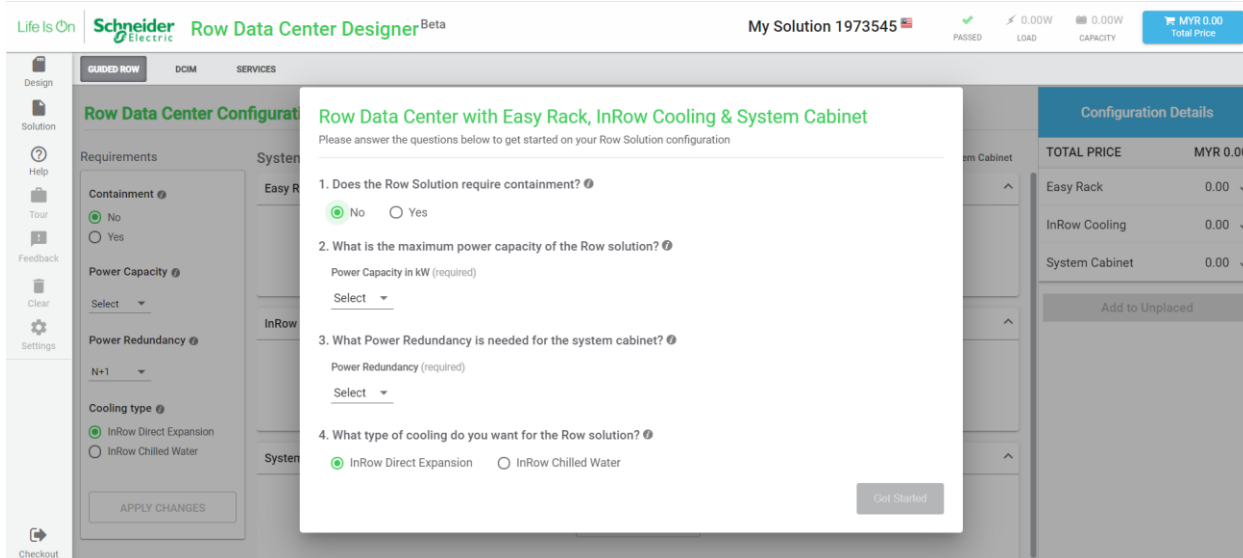


Fig2: Row Data Center Designer – Guided Row

## Row Data Center Designer laying the groundwork for the future

This release lays the groundwork for future Row Data Center Designer releases and increased capabilities. There will be additional launches coming over the next few months to expand the scope to the full set of offers and functionality to support our EcoStruxure Row Data Center solutions. Stay tuned to Design Portal updates for the latest developments.

Once this new tool is fully functional, we will start a process to phase out the ISX Designer tool.

Interested in learning more about this new tool? Please follow the links to video tutorials and Help document for more details.

### Useful Links:

#### Video tutorials:

Getting Started with Row Data Center Designer: <https://schneider-electric.box.com/s/jesg8mt7466yc08lknyw1x4hgw0zq1iv>

How to configure the Guided Row solution: <https://schneider-electric.box.com/s/75p5rhmwencib4s6xtxvfinyrjdsslrs>

#### Help Document:

Row Data Center Designer Help: <https://schneider-electric.box.com/s/x71elcagftza0d1p5dw04ieliv3fu9aa>

### Feedback & Support:

You can also reach out to us for clarifications, queries and access related issue etc. by sending mail to [designtoolsupport@se.com](mailto:designtoolsupport@se.com) or sending mail to Aaron Cotter or Piklu Das