

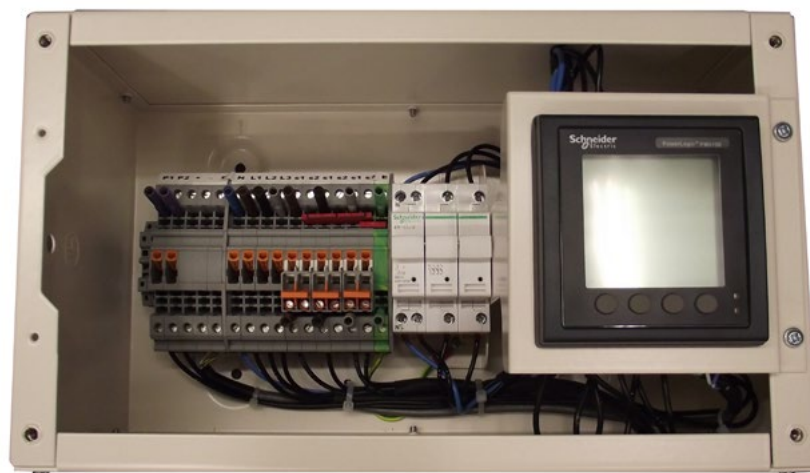
# NEW Retrofit metering kits

Schneider Electric's NEW retrofit metering kits are designed for easily measuring power and energy in existing installations without requiring complete disconnection of cabling.

Our flexible range of metering allows data collection using pulsed output, Modbus RS485 and Modbus TCP (Ethernet) communications. This enables the "measure" phase of Schneider Electric's 4 steps to energy efficiency;

## Applications

- Energy management
- Network management



## The solution for

All retrofit markets that can benefit from a solution that includes NEW retrofit metering kits:

- Building
- Industry
- Infrastructure
- Data centre and networks

## Benefits

- Easy to install without requiring complete disconnection of cabling
- A variety of metering choices to meet your requirements
- Short lead time for standard offers including most popular meters and gateway
- Split core CT options that ratio is up to 2400:5A

## Competitive advantages

- Standard offers, including meter and integrated energy server, are designed for your metering solution
- Provide modified service and solution

## Energy management solution

To get the most effective use from your Schneider Electric measurement and metering devices, we offer a range of dedicated data logger and gateway for your building energy management. See Page 114

The range of retrofit metering kits includes meters complying with BSEN62053 and includes MID approved meters as a standard offer.

- Their configuration allows them to be installed where there is limited space, they can be “stacked” to allow for multiple meters and an integrated gateway server to be assembled together.
- Split core Current Transformers 200:5A up to 2400:5A ratios are available preventing cable re-routing or cable breaks for simple retrofit installation.
- Supplied pre wired with top entry gland plate, connections are simple using a common connection interface for current inputs, voltage reference, pulsed output and Modbus communications connections.

Description	Ordering reference
Retrofit metering kit (Including MID METSEPM5111 meter with pulsed output and Modbus RS485 communications)	RETMKITMIDM
Retrofit metering kit (Including MID METSEPM5341 meter with Modbus TCP communications)	RETMKITMIDE
Retrofit metering kit (Including integrated gateway server Com'X 510)	RETMKITEBX510
Retrofit metering kit (Including integrated Ethernet gateway Link150)	RETMKITEGX150
Retrofit metering kit (Including OFGEM approved meter) consult us	RETMKOFGEM
200:5A split core current transformer	H68102005A
300:5A split core current transformer	H68103005A
400:5A split core current transformer	H68114005A
600:5A split core current transformer	H68116005A
800:5A split core current transformer	H68118005A
1000:5A split core current transformer	H681210005A
1200:5A split core current transformer	H681212005A
1600:5A split core current transformer	H681216005A
2000:5A split core current transformer	H681220005A
2400:5A split core current transformer	H681224005A
Metering terminal block	METBLK
STI fuses (pack of 10)	A9N15658

\*Split core CTs need to be ordered separately according to your network

\*\*Please consult us for modified solutions.

The range of Schneider Electric retrofit metering kits are designed to measure the energy consumed by a complete installation or part of it. (Ex: main incoming supply, warehouse or office floor).

- Measurements include voltage, current, frequency, active and reactive power, power factor and harmonic distortion. Using this Information is the key to understanding energy use and can be used to target waste and identify energy saving opportunities.
- Standard retrofit metering kits incorporating MID approved meters may be utilised for energy billing purposes.

Characteristic	Description
IP Rating	External IP40, Internal IP2X
Colour	RAL 9001
Terminals	Tunnel type, 6 mm <sup>2</sup>
METSEPM5111 Measurements	A, V, F, kW, kVA, kWh, kVAh, MD, THd plus pulsed output and Modbus RS485 communication
METSEPM5341 Measurements	A, V, F, kW, kVA, kWh, kVAh, MD, THd plus Modbus TCP communications
PM Power meter standard	BS EN 62053-22 Class 0.5S
OFGEM Measurements	Defined by application at time of order
Current transformers	200:5A up to 2400:5A split core current transformers BSEN 60044
Voltage reference connections	Fused 2A
Retrofit kit enclosure dimensions	200mm H x 230mm W x 145 mm D
Retrofit kit enclosure fixings	3 x 6 mm clearance dished hole fixings
Gland plate	Top entry removable 230mm x 145 mm