

StruxureWare™ Data Center Operation

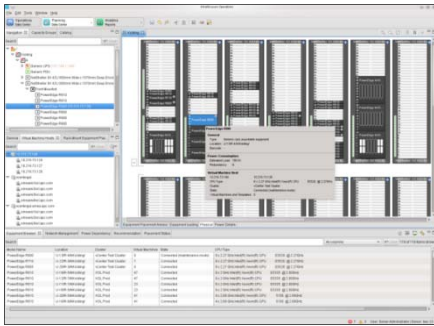
Cisco UCS™ Manager Plug-in for StruxureWare Data Center Operation



Expand your management practice outside of IT, to include power, cooling, security & environmental



StruxureWare Data Center Operation



The Data Center Challenge

Identifying the location of available power, cooling, network and space when deploying a piece of equipment.

Integration Overview

Schneider Electric StruxureWare Data Center Operation manages the data center physical infrastructure, tying real-time asset management with the potential impact to physical servers hosting virtual machines. Let the software guide your placement of the UCS server, automatically considering power cooling, network and physical space constraints.

Cisco Unified Computing System (UCS) Manager provides unified, embedded management of all software and hardware components in the Cisco UCS. It controls multiple chassis and manages resources for thousands of virtual machines

Schneider Electric Cisco UCS Manager Plug-in for StruxureWare Data Center Operation provides auto-discovery of assets managed by Cisco UCS Manager, enabling data center managers to monitor the CPU/power utilization along side utilization at the physical infrastructure. Power capping can be set for the rack, either as automatic global power capping for all racks, or as individual settings for specific servers, but with the difference of knowing your real-time physical capacity constraints.

Solution Benefits

Power /CPU Utilization

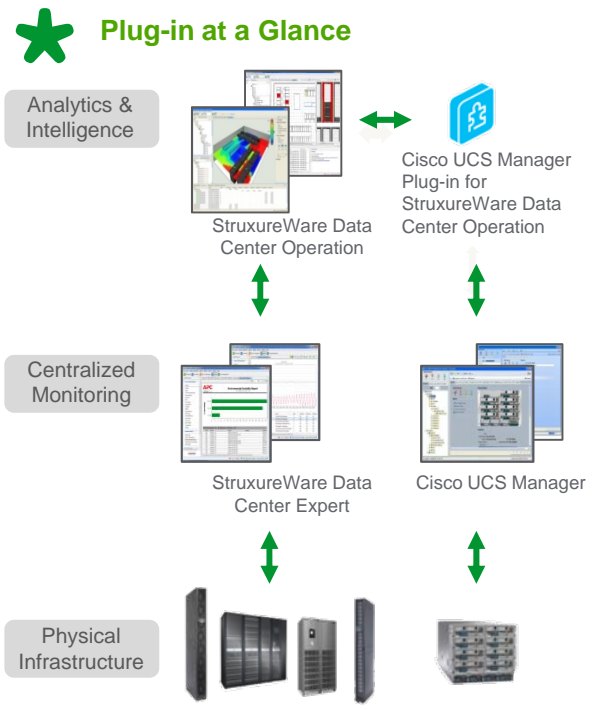
- IT manager can view the Power and CPU of every asset managed by the Cisco UCS Manager and receive notice of physical infrastructure events and their impact on the IT infrastructure.

Power Capping

- Provides a mechanism to control the maximum power a piece of Cisco managed equipment could draw, thus preventing any overloads of circuits.

Increased Availability

- Proactive monitoring of power and cooling thresholds and trends before reaching critical levels and impacting application performance.



Additional Information & Support
www.apc.com/struxureware