

VXA-VXB

Indoor Vacuum Circuit Breaker for AC Traction Applications

With ever increasing pressure on railway operators to improve service quality and reduce operating costs, an efficient and reliable electrical power network is a crucial requirement to achieving the performances demanded by today's customers.

The Schneider Electric solution

Our proven range of indoor vacuum circuit breakers has been specially designed to meet the specific requirements of AC traction power supply systems. By constantly seeking to improve our design, we can offer you a highly reliable solution with minimum installation work and reduced life-cycle costs.

Proven technology

VXA and VXB are indoor circuit breakers, developed for switching applications on AC traction power supply systems at 17 kV 16.7 Hz or 27,5 kV 50/60 Hz. These traction circuit breakers can be delivered in single – VXA – or two-pole – VXB – configurations.

The breakers can be fixed pole-mounted type or mounted on withdrawable trucks.

VXA and VXB combine our latest range of vacuum interrupters providing unrivalled performance for reduced size with a well-proven and robust spring drive mechanism.

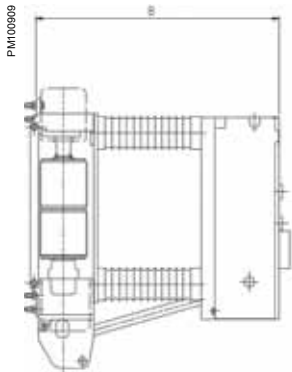
To guarantee high reliability, the VX breakers can be configured with a rated lightning impulse withstand voltage (BIL) up to 250 kV.

Already installed on many national railway networks around the world, VXA and VXB meet the requirements of IEC and EN standards, as well as many country specifications.

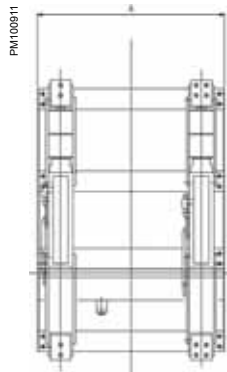
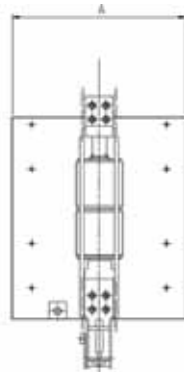


CUSTOMER BENEFITS

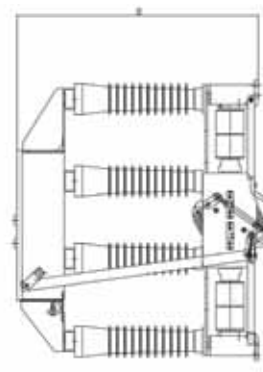
- Proven experience
- Cost-effective solution
- Extremely robust construction
- Compact design
- Flexible integration into switchboards
- High number of mechanical and electrical switchgear cycles



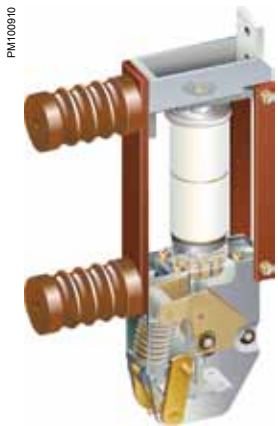
VXA 1-pole version



VXB 2-pole version



Pole of VX breakers



Dimensions

Type designation	mm	VXA	VXA	VXB
Number of poles		1	1	2
(A) Width	mm	500	500	730
(B) Depth	mm	703/743	957	957
Pole centre spacing	mm	--	--	550
Weight approx.	kg	150/180	210	280

Technical characteristics

Type designation		VXA	VXA	VXB
Number of poles		1	1	2
Rated voltage	kV	17.5/27.5	27.5	27.5
Rated lightning impulse withstand voltage (BIL)	kV	170	250	250
Rated power frequency withstand voltage	kV	70	95	95
Rated current (up to)	A	2,500	2,000	2,000
Rated short-time current (3s) (up to)	kA	40	31.5	31.5
Rated short-circuit making current (up to)	kA	100	80	80
Rated short-circuit breaking current (up to)	kA	50	31.5	31.5
Rated frequency	Hz	16.7/25	16.7/25/50/60	16.7/25/50/60
Number of mechanical operating-cycles of drive mechanism		10 ,000	10 ,000	10 ,000
Number of mechanical operating-cycles of drive mechanism		10 ,000	10 ,000	10 ,000