



UPS Accessory
APC UPS Power Strip

Certainty in a Connected World

Convenient accessory for 230V UPS to adapt IEC to Schutzkontakt outlets

The new APC by Schneider Electric UPS Power Strip ensures the safe conversion of a 230V UPS IEC output to 4 Schutzkontakt (CEE 7/3) outlets, offering convenience and reliability when you need it most. Tested to ensure perfect UPS operation, the models also provide integrated circuit breaker power switch for additional protection and wall mounting design.

- ✓ **Reliable:** APC is the industry's most trusted power management manufacturer.
- ✓ **Certified:** Models tested to ensure the right operation with APC UPS, providing convenience and peace of mind.
- ✓ **Convenient:** Practical, robust and with the possibility of wall mounting.

Usability

| Amount of Power Strip that can be used in UPS | |
|---|--|
| For UPS with both surge only and battery backup outlets | A maximum of two UPS Power Strips , one for each type of outlet |
| For UPS with only battery backup outlets | Only one UPS Power Strip |

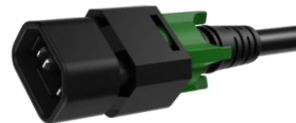


Models:

PZ42I-GR:
IEC plug



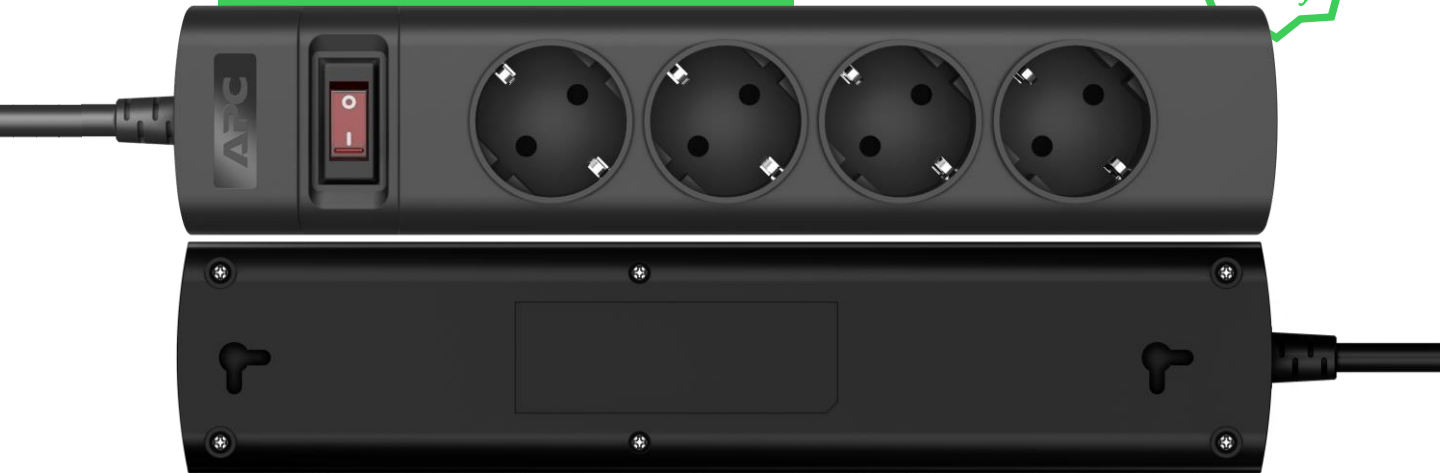
PZ42IZ-GR:
Locking IEC connector



Features and benefits



Exclusive use for 230V UPS with IEC outlets



- 1 **4 Schutzkontakt (CEE 7/3) outlets**
- 2 **Integrated Power Switch and Resettable Circuit breaker**
Provides power to all 4 outlets and an extra protection against overload (>10A).
- 3 **Wall-Mount holes**
Allow flexibility set-up in tight locations.
- 4 **Child-proof Shutters**
Protect users from accidental contact with unused outlets.



For PZ42I-GR model:
IEC Plug
High-quality 1.5M shielded cord with IEC plug to connect to a 230V UPS.



For PZ42IZ-GR model:
Locking IEC Connector
High-quality 1.5M shielded cord with an IEC locking plug for a more secure connection between UPS and Power Strip.

Technical specifications

| FEATURES | PZ42I-GR | PZ42IZ-GR |
|----------------------|---|---------------------------|
| Series | Power strip | |
| Outlet | 4 Schutzkontakt (CEE 7/3) | |
| Joule Rating | N/A – No surge protection | |
| Max Current | 10A | |
| Max Power | 2500W | |
| Chord length | 1.5m | |
| Cord thickness | 1.0mm ² | |
| Power button | Double break (L & N) safety switch with LED | |
| Child-proof Shutters | Yes | |
| Certification | CE | |
| Input | IEC C14 | Locking IEC C14 connector |

www.apc.com

