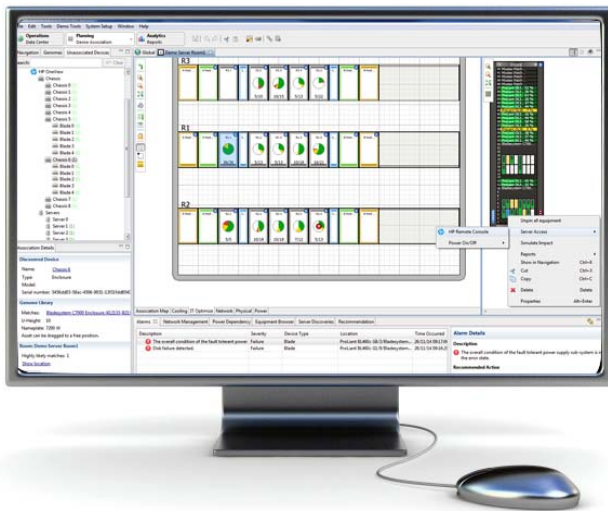


StruxureWare™ Data Center Operation

HP OneView integration for converged data center management

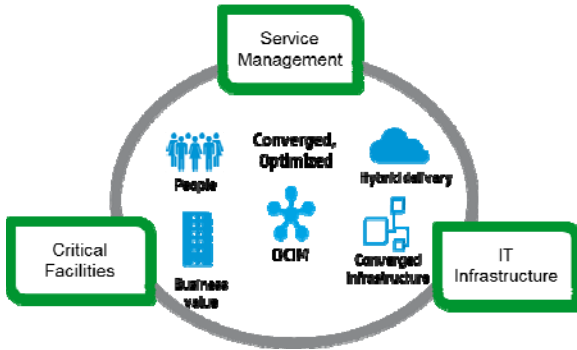


Integration of IT service management best practices into the DCIM solution



StruxureWare for Data Centers

Converged IT & Infrastructure Management



Schneider Electric's **StruxureWare for Data Centers**, coupled with Hewlett Packard's **OneView** service automation platform provides holistic management and integrated IT/facility solutions resulting in greater agility, efficiency and cost savings for the business.

Schneider Electric Data Center Infrastructure Management (DCIM)

StruxureWare Data Center Expert

A scalable monitoring system which collects, organizes and distributes critical alerts, provides site surveillance, security and designated information in real time, providing a unified view of complex physical infrastructure environments from anywhere on the network.

StruxureWare Data Center Operation

Optimizes management of the data center physical infrastructure through an operations framework. The application ties real-time physical infrastructure management of space, power and cooling capacities and its potential impact, to physical servers hosting virtual machines via a connector to Hewlett Packard's OneView management software.

Hewlett Packard OneView

A modern IT management platform that is architected for managing servers, storage, and network resources providing software-based control and a user-centric approach to ensure rapid, repeatable, and reliable operations at a lower cost. OneView is an automated, intelligent management hub to streamline the delivery of IT services and to speed the transition to IT-as-a-service and to the hybrid cloud.



Schneider Electric's StruxureWare for Data Centers suite, combined with Hewlett Packard's OneView management platform provides a holistic management and integrated IT/facility solution resulting in greater agility, efficiency and cost savings for your business.

With the integration into HP OneView, Schneider Electric's StruxureWare for Data Centers continues to build on its goal of converged IT and facilities management solutions. This connector enables communication between ITSM and DCIM platforms, providing simultaneous visibility to both IT and facilities managers, enabling a key next step in automated service deliveries and Data Center Service Optimization (DCSO).

The connector enables bidirectional, simultaneous communications between StruxureWare for Data Centers and HP OneView. A key advantage of this connection is the elimination of operational silos between management platforms, as information is shared seamlessly. This eliminates time-consuming, repetitive data entry and minimizes error. With visibility into server, storage and network management as well as service creation, this integration provides holistic visibility and control of IT service delivery and infrastructure capacity management.

Key benefits

Capacity

- Manage constraints within IT services and facilities.
- Rapid identification of available physical resources (space, power, cooling, network, IP, etc.) for service provisioning.

Intelligence

- Maintains changes and enforces policies across IT and infrastructure.
- Automatically maintains compliance with internal and external regulatory requirements.
- True linkage of workload-to-watts, enabling per-process total cost of ownership.

Efficiency

- Eliminates operational silos, enabling single-point data entry and control.
- Minimizes potential for errors.
- Enhances visibility of infrastructure impact to end users.

What the Schneider Electric and Hewlett Packard partnership will bring

- End-to-end portfolio of services and facility, IT and service management expertise to deliver complex, multi-vendor data center projects.
- Combined power of Schneider Electric's world-leading DCIM solution with Hewlett Packard's complete IT Operations and Management Software portfolio.
- Gateway to the software-defined data center automated service delivery.