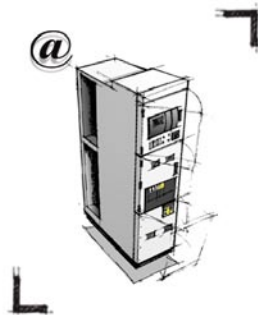


Power Web Monitoring

Key data for better management

Transparent
Ready®

Web enabled
Power & Control



Merlin Gerin
Square D
Telemecanique

Schneider
 **Electric**
Building a New Electric World

MCset Transparent Ready™ option ... Key data for better management

MCset Transparent Ready™ switchboards integrate Web technology so that you can find out everything you want to know about your electrical installation.

A simple and user-friendly tool optimizing the way you manage your electrical power and production facilities.

Keep in control of your power consumption

The MCset Transparent Ready™ option provides comprehensive, real-time, permanent and remote power consumption data. Consumption by sector, unit, workshop, excessive or abnormal consumption, variations, etc, you have all the data you need to make direct savings on your electricity bill.

Better management of your electrical installation

Your electrical installation is constantly monitored with MCset Transparent Ready™ option. Knowing the status of your electrical equipment means that you can fully benefit from their performance levels. This allows you to manage your equipment base under optimal conditions and optimize investments.

Guarantee availability

With Transparent Ready™, you anticipate production stoppages. Transformer overloads, phase imbalance, etc, can be the cause of production facility downtime. Finding out about possible malfunctions allows you to anticipate faults in your power supply.



MCset Transparent Ready™ option

Simple, quick and secure access to your installation's critical data

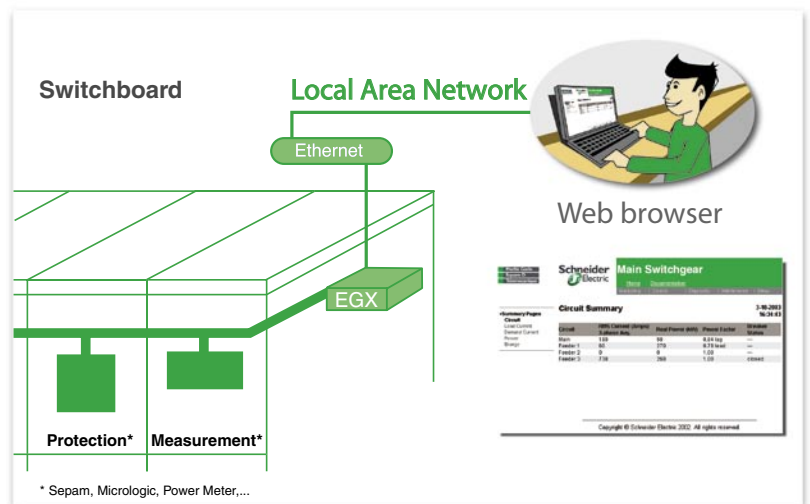
Transparent Ready™ is a simple solution that enables you to access data (status, measurements, etc.) provided by your electrical distribution equipment: MV switchboards, LV switchboards transformers. You can access all this without any specific software from any PC connected to your company's Ethernet network, using a simple Web browser. Moreover, access is password protected.

Information to manage total costs

Integration of Web technologies into MCset equipment makes everything as easy as opening a Web page. It allows you to improve your competitiveness:

- reducing operating costs:
- comparing consumption between workshops,
- allocating power costs to production lines,
- increasing equipment utilization,
- improving the reliability of your supply.

It's a built-in, simple, cost-effective solution, based on standards, and which doesn't require specific skills to be operated.



MCset Transparent Ready™ option

Simple choice and easy commissioning



Intranet



Web browser

Simple choice

The Transparent Ready™ option is given when ordering your switchboard. You simply have to choose one of the two service levels or choose a custom solution.

Transparent Ready™ MCset switchboard comes equipped with a Web server to store Web pages dedicated to power equipment data. It collects and presents all data contained in the different smart devices in your equipment.

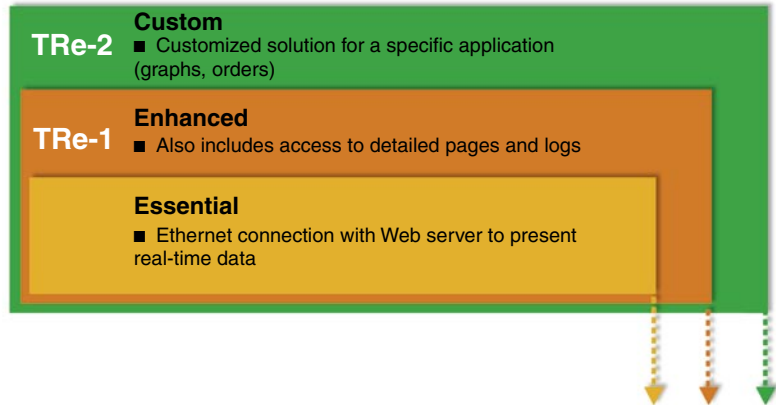
Easy commissioning

Transparent Ready™ equipment is delivered ready to connect and commission. All you need is a live Ethernet connection, an IP address and a standard Web browser. No additional hardware or software is needed.

A Quick Start guide, packaged with your switchboard, provides three easy-to-follow installation steps.

MCset Transparent Ready™ option

Simply choose your service level



Functionalities	TRe-1	TRe-2	Custom*
Ethernet network connection, 10/100 Base Tx	■	■	
Front-accessible Ethernet port, for local access	□	□	
Integral Web server	■	■	
Summary power monitoring Web pages, all circuits	■	■	
Instantaneous meter readings, main	■	■	
Instantaneous meter readings, all devices		■	
Basic historical data logging, energy and trending		■	
Log displays		■	
Export of data tables in standard Windows format		■	
Waveform analysis for harmonics and disturbances			
User-configurable alarms			
User-configurable data logging and trending			
Setup, entire equipment and Web server plus individual devices			
Maintenance and diagnosis Web pages			
On-line documentation, entire equipment and individual devices			
Remote reset of counters, password protected			
User-configurable one-line drawings			
User-configurable Web pages and reports			
Multiple-equipment viewing for global system view			

□ option

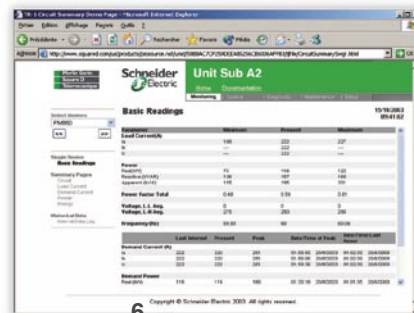
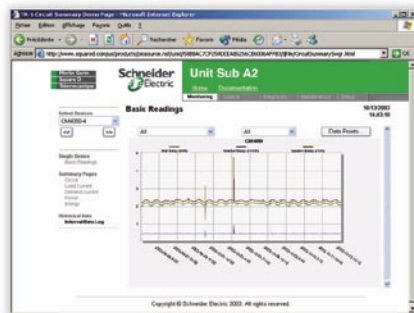
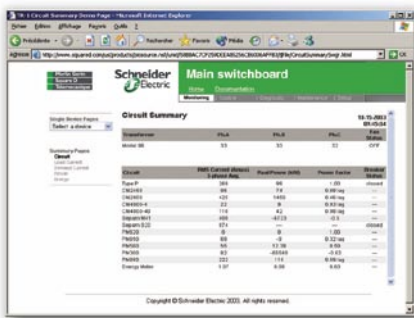
* Please consult us

MCset Transparent Ready™ option TRe-1 and TRe-2 service levels

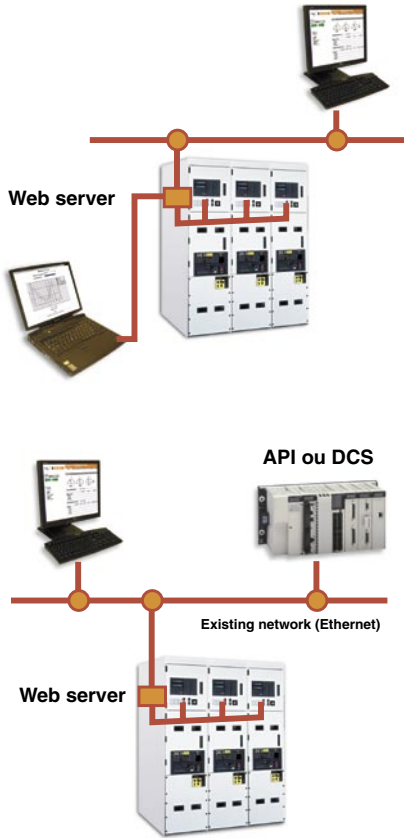
Functionalities provided*

- **Instantaneous readings**
Displays automatically updated meter values.
- **Circuit summary**
Displays the RMS current 3-phase average (A), the real power (kW), the power factor, the circuit breaker status (if applicable), etc.
- **Load current summary**
Displays the current RMS value (A) for each phase, for all circuits.
- **Demand current summary**
Displays the average demand current value (A) for each phase, for all circuits.
- **Power summary**
Displays the present demand (kW), the peak demand (kW) and the time and date of the record.
- **Energy summary**
Displays the energy (kWh) the reactive energy (kvarh) and the time and date of the record.
- **Instantaneous readings, all devices**
Displays automatically updated meter values for all the smart devices in the equipment.
- **Basic historical data logging, energy and trending**
Displays automatically updated meter values for all the smart devices in the equipment.
- **Maintenance and diagnosis web pages**
Displays automatically updated meter values for all the smart devices in the equipment.
- **Log displays**
Displays data as time curves or data tables.
- **Export of data tables**
Allows data tables to be exported in standard Windows format.

* Some functionalities are only available with the corresponding devices.



MCset Transparent Ready™ option System integration & installation



Local access

Your MCset Transparent Ready™ switchboard provides a local access to information: you have just to connect your PC to the front socket (optional) and get all the information you need.

Integration into a system

Increased performance & connectivity

The integrated Web server, EGX 400, opens your switchboard towards increased communication performances (Ethernet) and TCP/IP connectivity (Internet Protocol).

Integrated into a system, your MCset Transparent Ready™ switchboard gives you the possibility to have access, from anywhere, to:

- summary or detailed readings,
- data logging, energy and trending,
- maintenance and diagnosis pages,
- on-line documentation,...

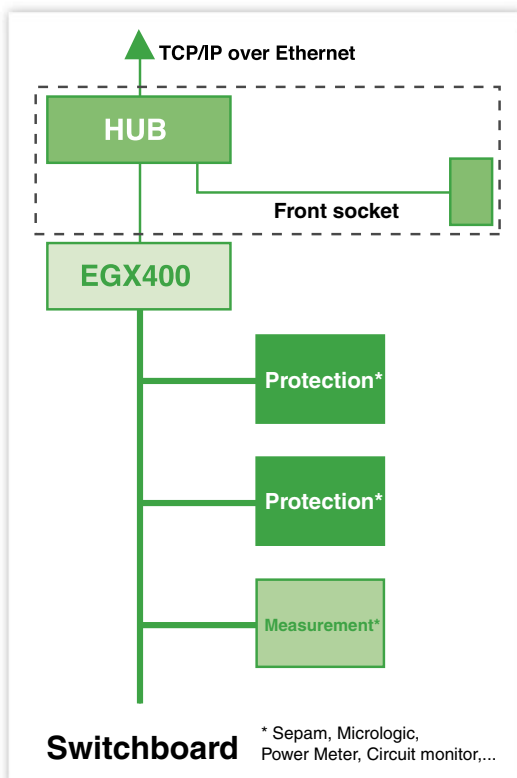
according to the level you chose.

Simultaneously, several applications (PLC's, DCS, PC's...) can run and have transparent access to any smart device of your switchboard.

Your MCset option Transparent Ready™ is naturally integrated into all Transparent Factory™ and Transparent Building™ solutions.

* DCS: Digital Control System.

** SMS is part of PowerLogic system.



Technical characteristics

	EGX 400
Power supply	24 VDC
Number of RS 485 ports	2
Number of devices connected	64
Ethernet 10/100Base Tx port	1
Ethernet 100Base Fx (fiber optic) port	1
Communication protocol	TCP/IP
Messaging protocol	Modbus

Designations

TRe-1 MCset switchboard
TRe-2 MCset switchboard
TRe-3 MCset switchboard (consult us)

Option
Front socket (hub included)

Schneider Electric Industries SAS

Communication
38050 Grenoble cedex 9 - France
Tel. : + 33 (0)4 76 57 60 60
<http://www.schneider-electric.com>

As standard specifications and designs change from time to time, please ask for confirmation of the information given in this publication.



*This document has been printed
on ecological paper.*

Design, realization: Pema-Cohérents
Photos: Schneider Electric
Printed: