

NetBotz™

Access Control



Rack Access PX-HID

Rack Access PX-HID protects NetShelter® SX enclosures from unauthorized access. This IP-based system uses electronic locks to secure enclosures. Access is granted through HID-based proximity cards or the secure Web interface. Rack Access PX-HID integrates with existing building security; it is compatible with HID-based proximity cards using 125kHz technology, and can authenticate from a RADIUS server. Alarm notification options, such as email, indicate a compromised security state. Administrators can easily configure access for individual employees, schedule access to equipment for maintenance purposes, and view audit trails. Mounting options include traditional rack mounting or tool-less zero-U mounting.



NetBotz PX-HID is ideal for:

- Racks containing sensitive equipment and information
- Racks in remote or unmanned locations
- Recording detailed access logs, such as who accesses what and when
- Monitoring the lock and door status of racks to ensure all racks are secured

Availability

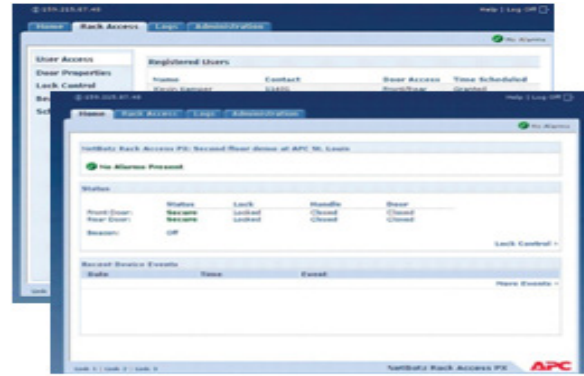
Proximity card access: Restrict equipment access to authorized personnel through proximity card interaction

- User access scheduling: Restrict equipment access to specific times for each configured user
- Alarm beacon: Visual indication of access violation or environmental
- Alert notification: Identify problematic trends before they escalate, or export the data log for analysis
- Event logging: Pinpoint the timing and sequence of events leading up to an incident using the integrated audit trail

Manageability

Centralized management: Allows group administrative capabilities via StruxureWare™ Data Center Expert

- Building access integration: Use existing HID-based proximity card , or authenticate from a RADIUS server
- Master key override: Override electronic access with a hard key during power outages or maintenance
- Forced entry alarm: Alert administrators to a forced entry into a rack
- One-time access schedule: Configure the rack to be unlocked for a scheduled time for maintenance
- Browser accessible: View the user interface in a browser. Gives quick access from anywhere on the network without installing software
- Rack mounting: Includes horizontal, vertical, and tool-less mountProtection
- Dual authentication and audit trail: Integrate with NetBotz surveillance for visual and proximity card identification
- Administrative access: Full access and read-only levels available
- Read-only access: Share access without risking unauthorized configuration changes
- Password security: User-selectable password protection for web interface
- Alert notification: Configure alert destination for access and device alarms



Specifications

SKU	AP9361
Components	Rack Access Appliance; 2 Proximity Card Reader Handles; 2 RJ-45 Style Door switch kits; cables; hardware; 2 HID cards
Accessibility	Remote Access; Proximity Card; Master Key Override; User Access Scheduling
Rack Mounting	0U or 1U
Enclosure Compatibility	NetShelter® SX
Alert Notification	SNMP; Paging; E-mail; and Visual Beacon
Network Configuration	TCP/IP Configuration Parameters
Management Solutions	StruxureWare Data Center Expert HP Open View What's Up Gold
Appliance Ports	1 RJ-45 Ethernet Port; Serial Port (configuration only); Front Door Lock Port (handle); Front Door Switch (switch); Peripheral Port (reserved for future use); Rear Door Lock Port (handle); Rear Door Switch (switch)
Power	Integrated 110/240 volt power supply (IEC connector)
Proximity Card Capacity	Up to 20 proximity card signatures per appliance
Proximity Card Compatibility	HID Proximity Cards (HID 125kHz proximity technology) Card formats: H10301, H10302, H10304, Corp1000

Boston ONE Campus
800 Federal Street
Andover, MA 01810
www.schneider-electric.com

Life Is On

